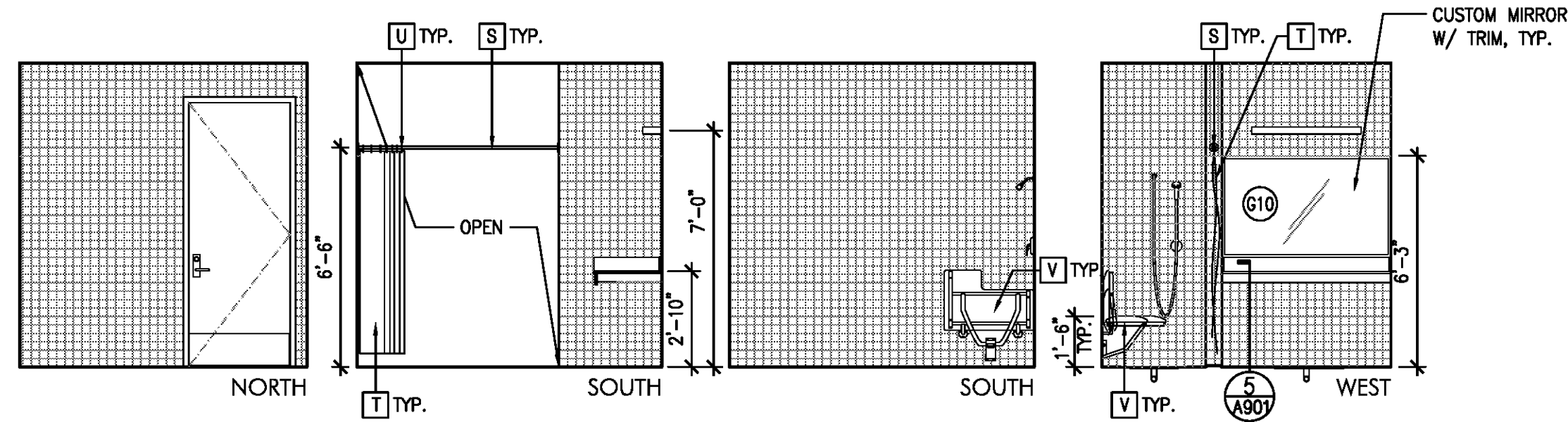
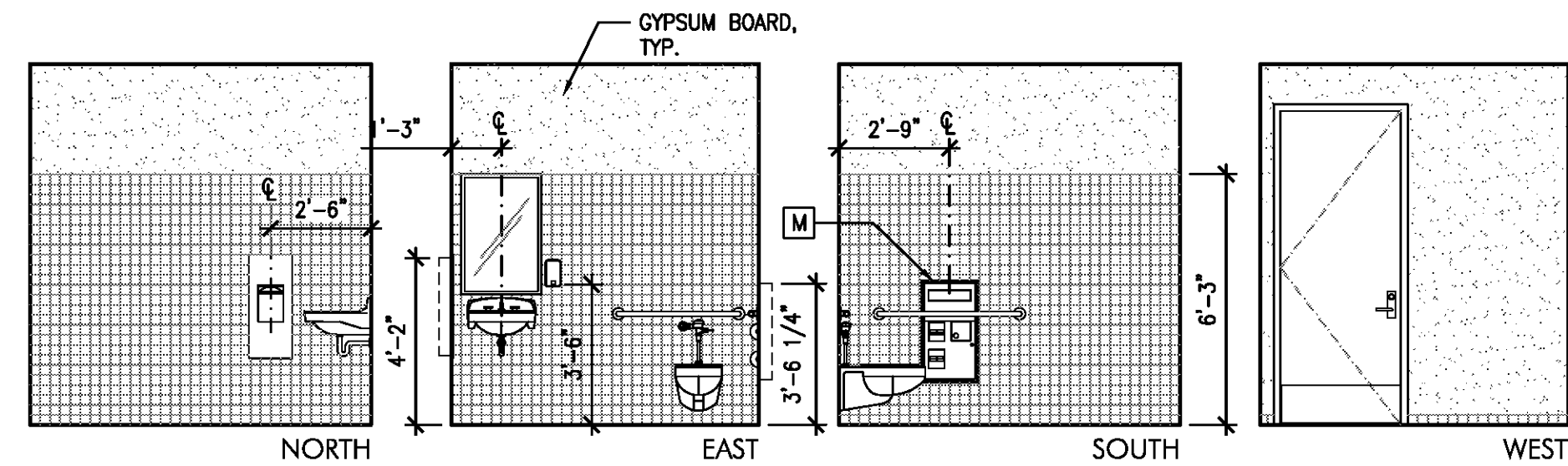


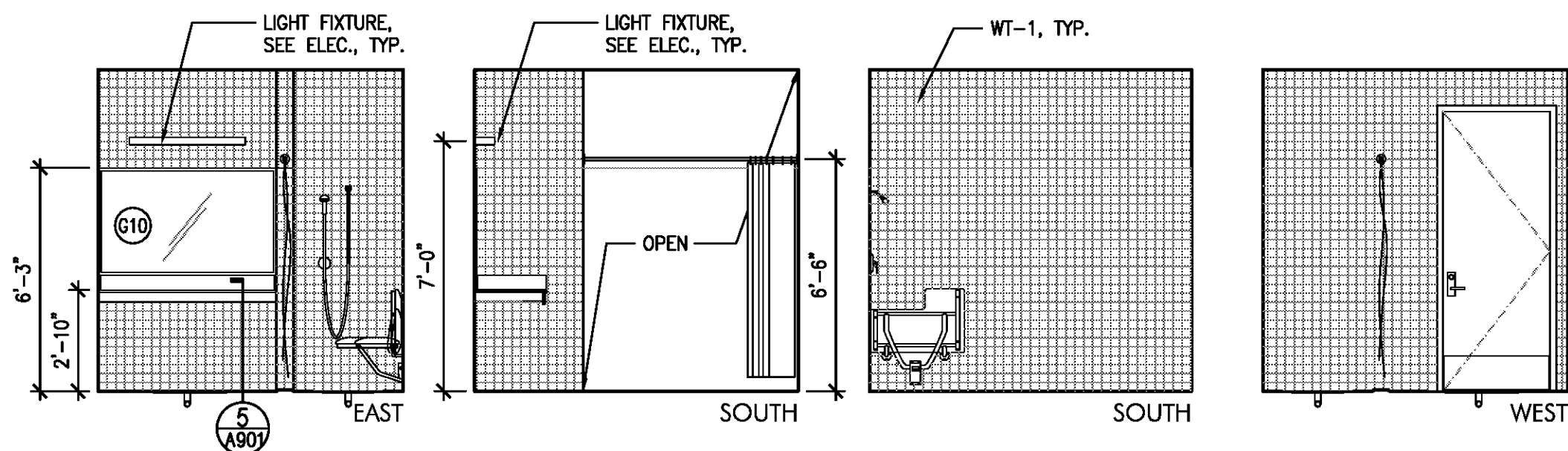
**3** INTERIOR ELEVATIONS  
 A402 UNISEX 209 Scale: 1/4" = 1'-0"



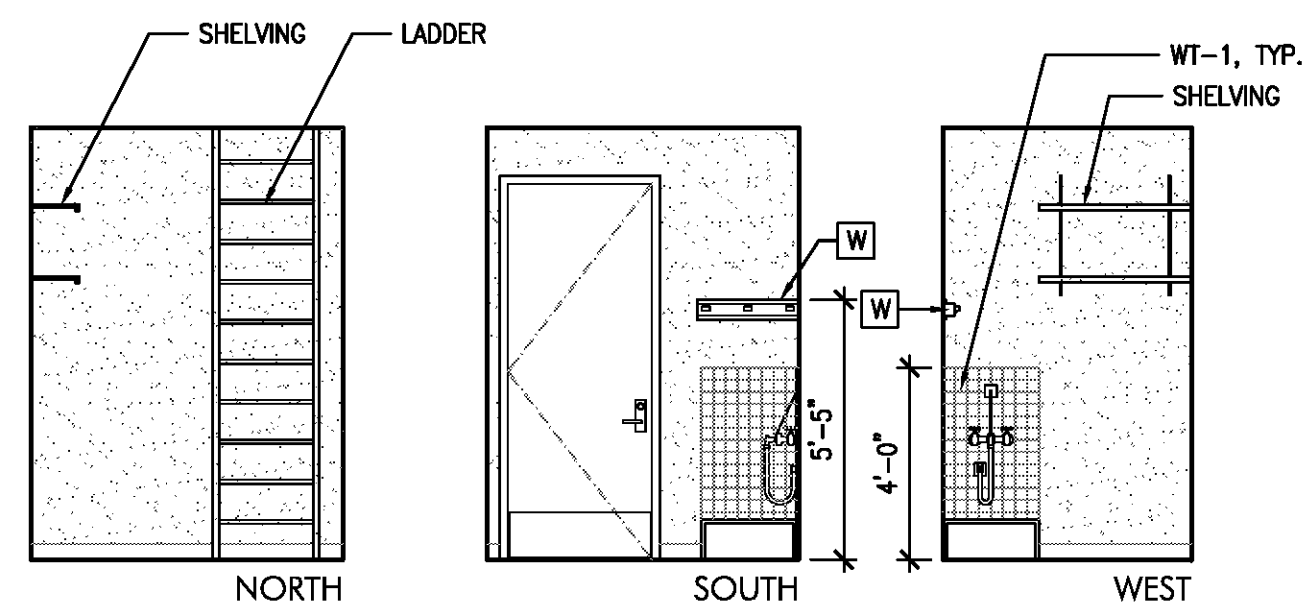
**4** INTERIOR ELEVATIONS  
 A402 UNISEX SHOWER 210 Scale: 1/4" = 1'-0"



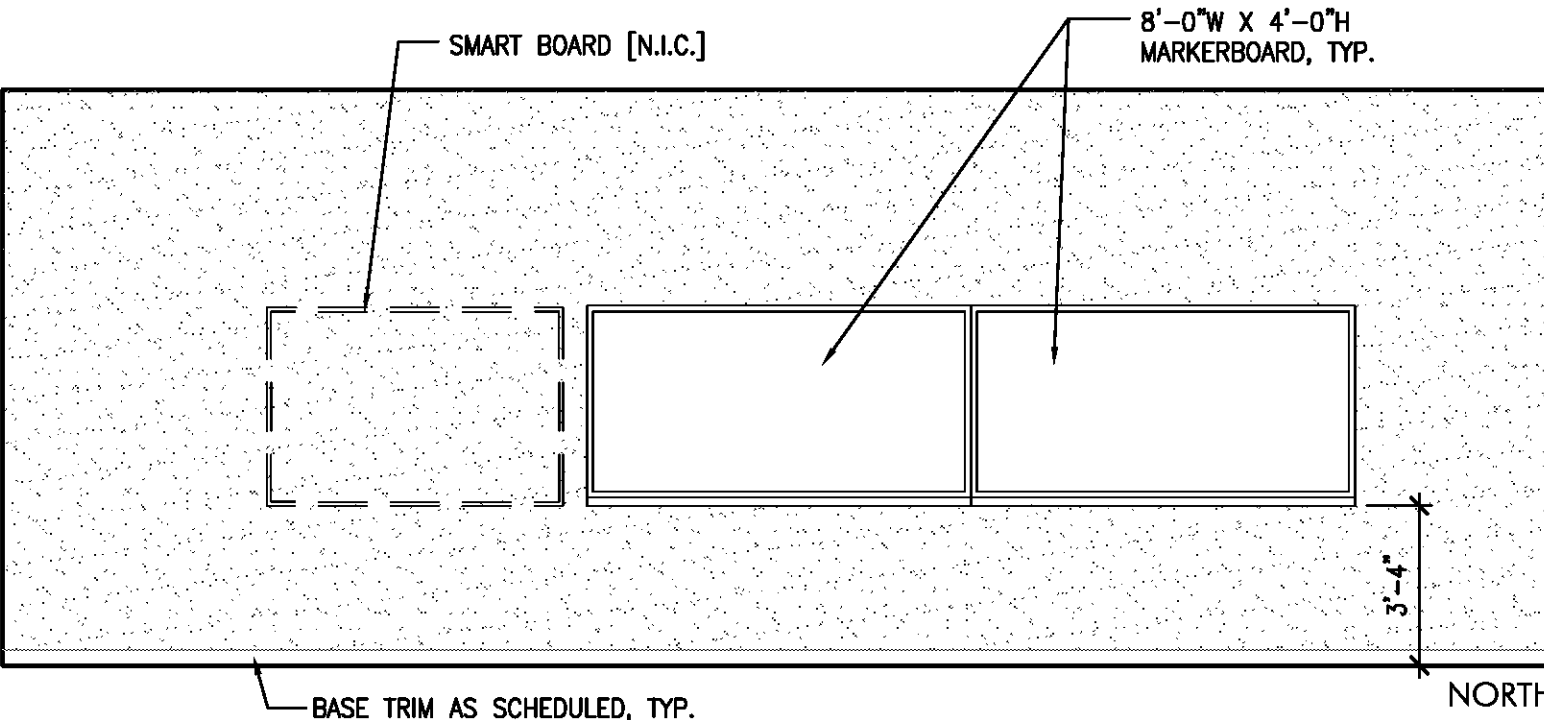
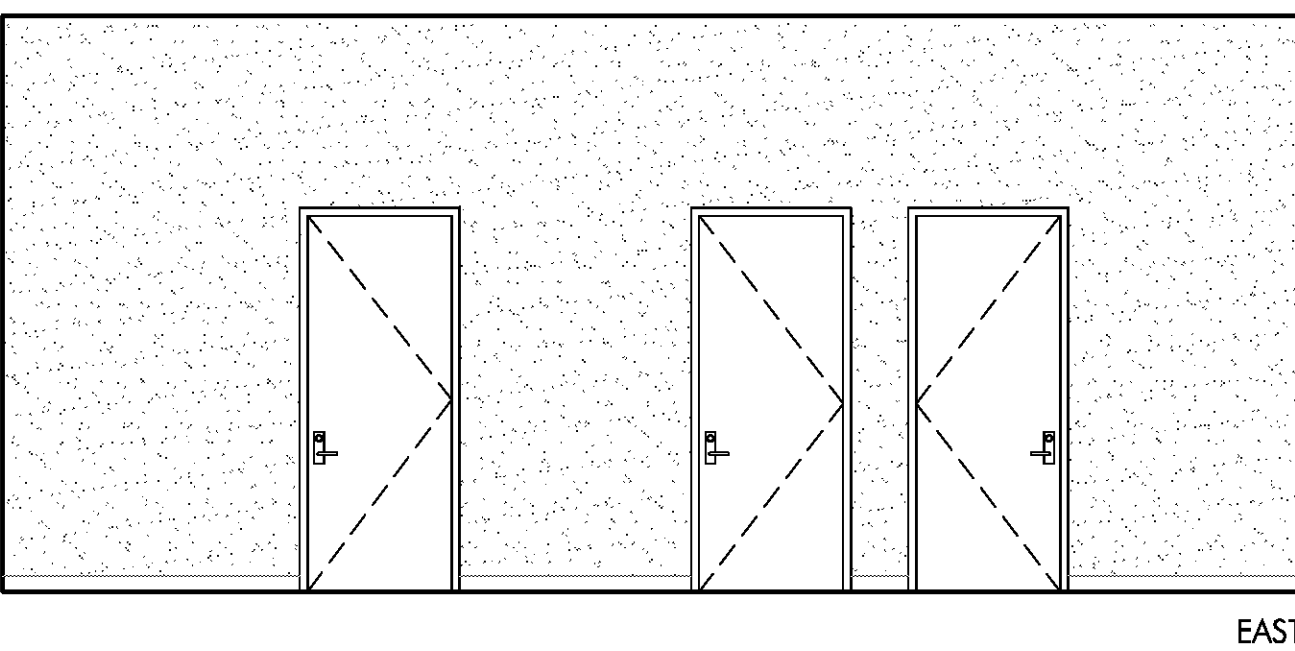
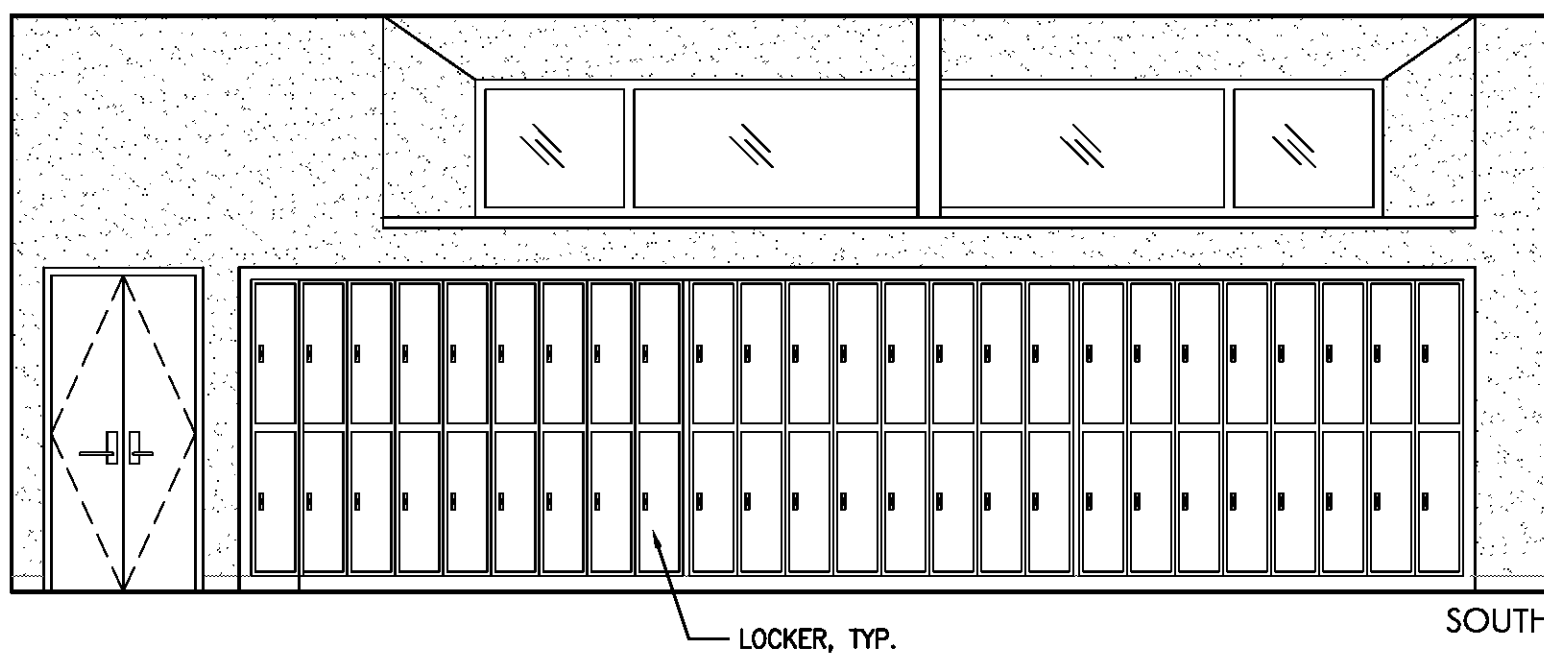
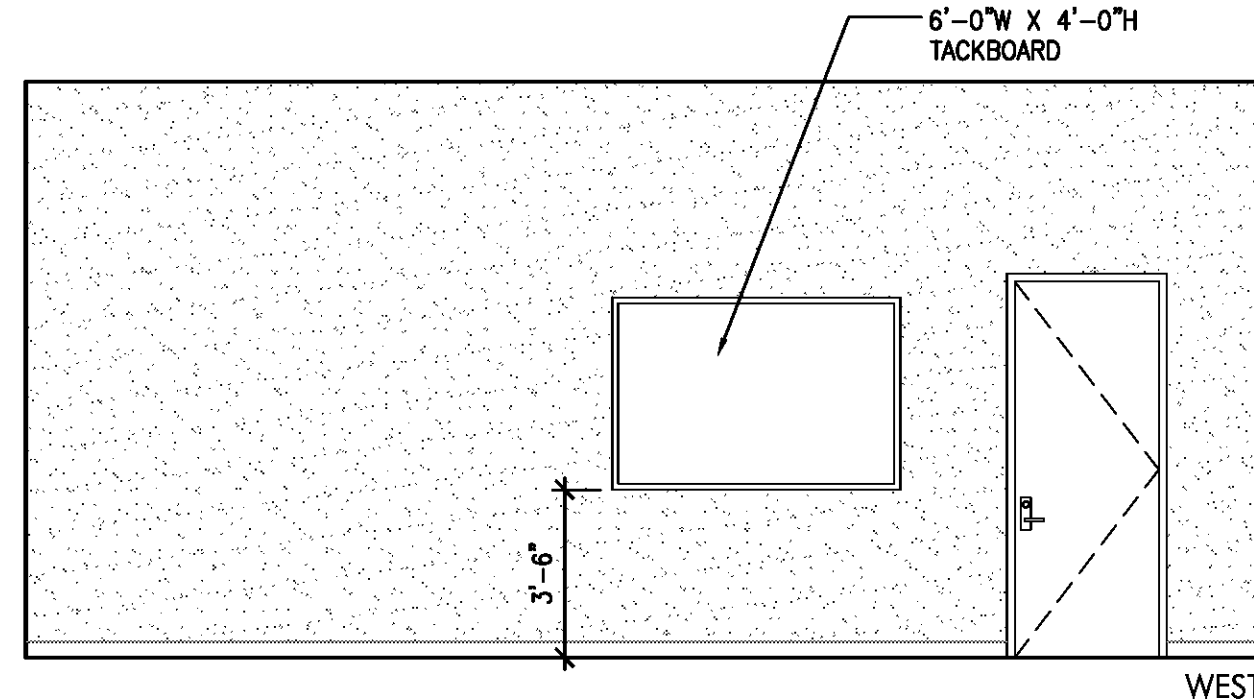
**5** INTERIOR ELEVATIONS  
 A402 GIRLS 205 Scale: 1/4" = 1'-0"



**6** INTERIOR ELEVATIONS  
 A402 GIRLS SHOWER 204 Scale: 1/4" = 1'-0"



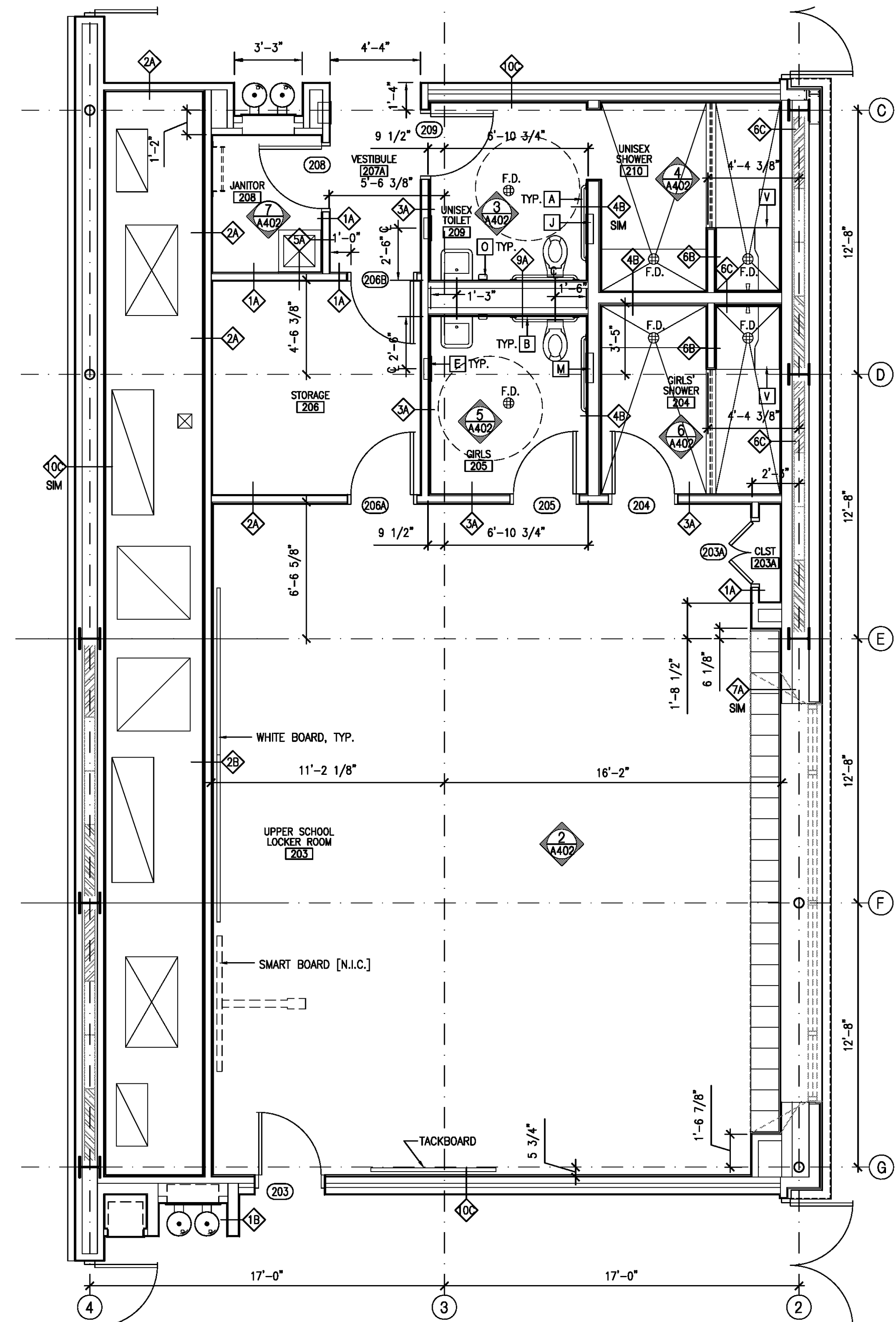
**7** INTERIOR ELEVATIONS  
 A402 JAN 208 Scale: 1/4" = 1'-0"



**2** INTERIOR ELEVATIONS  
 A402 LOCKER ROOM 203 Scale: 1/4" = 1'-0"

**DIMENSIONS LEGEND**

- DM. TO FACE OF STUD
- DM. TO FACE OF FINISH
- DM. CLEAR FINISH TO FINISH



**1** ENLARGED PLAN - SECOND FLOOR  
 A202 | A402 TOILETS, LOCKERS Scale: 1/4" = 1'-0"

**GENERAL NOTES**

- A. SEE SHEET A403 FOR FLOOR PATTERN PLAN AND FLOOR DRAIN LOCATIONS
- B. SEE 5/A403 FOR SHOWER RECEPTOR DETAILS

**SCHEDULE OF ACCESSORIES**

- |   |   |
|---|---|
| <b>A</b> GRAB BAR- 42" L  | <b>N</b> LAVATORY-MOUNTED SOAP DISPENSER                    |
| <b>B</b> GRAB BAR- 36" L  | <b>O</b> SURFACE-MOUNTED SOAP DISPENSER                     |
| <b>C</b> GRAB BAR- 24" L  | <b>P</b> UNIT MIRROR- 24"W x 36"H                           |
| <b>D</b> RECESSED TOWEL DISPENSER AND WASTE RECEPTACLE  | <b>Q</b> NOT USED   |
| <b>E</b> RECESSED TOWEL DISPENSER   | <b>R</b> NOT USED   |
| <b>F</b> RECESSED SANITARY NAPKIN DISPENSER   | <b>S</b> SHOWER CURTAIN ROD                                 |
| <b>G</b> NOT USED   | <b>T</b> SHOWER CURTAIN- 70"W x 72"H                        |
| <b>H</b> PARTITION MOUNTED TOILET-SEAT-COVER AND TOILET PAPER DISPENSER (ADA-COMPLIANT)                           | <b>U</b> SHOWER CURTAIN HOOK                                |
| <b>J</b> RECESSED TOILET-SEAT-COVER AND TOILET PAPER DISPENSER (ADA-COMPLIANT)                                    | <b>V</b> SHOWER SEAT, FOLDING                               |
| <b>K</b> PARTITION MOUNTED TOILET-SEAT-COVER, TOILET PAPER DISPENSER AND SANITARY NAPKIN DISPOSAL                 | <b>W</b> MOP/BROOM HOLDER                                   |
| <b>L</b> PARTITION MOUNTED TOILET-SEAT-COVER, TOILET PAPER DISPENSER AND SANITARY NAPKIN DISPOSAL (ADA-COMPLIANT) | <b>X</b> SURFACE MOUNTED DOUBLE ROLL TOILET PAPER DISPENSER |
| <b>M</b> RECESSED TOILET-SEAT-COVER, TOILET PAPER DISPENSER AND SANITARY NAPKIN DISPOSAL (ADA-COMPLIANT)          | <b>Y</b> SURFACE MOUNTED SANITARY NAPKIN DISPOSAL           |
|   | <b>Z</b> RECESSED TOILET-SEAT-COVER DISPENSER               |

