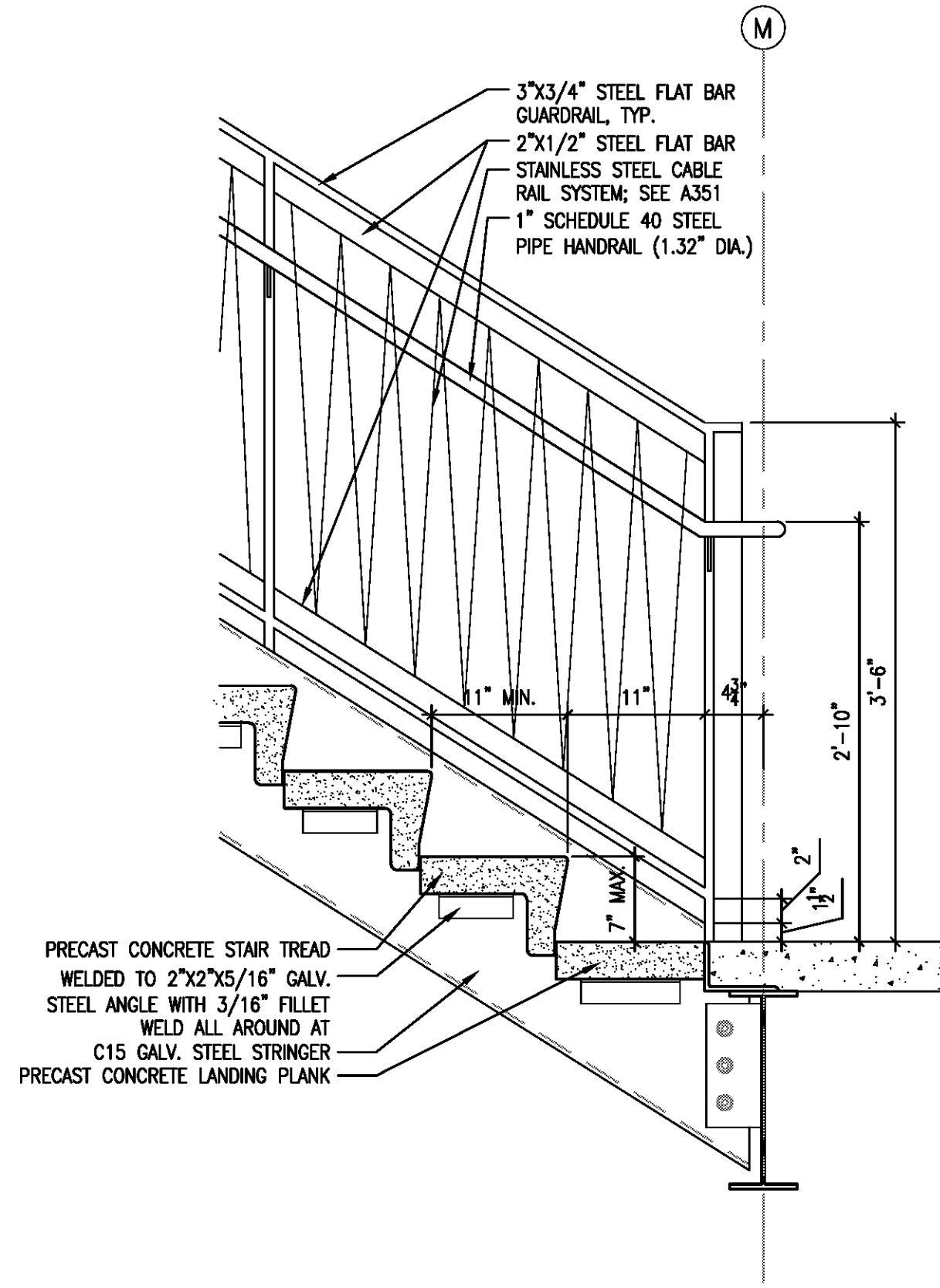
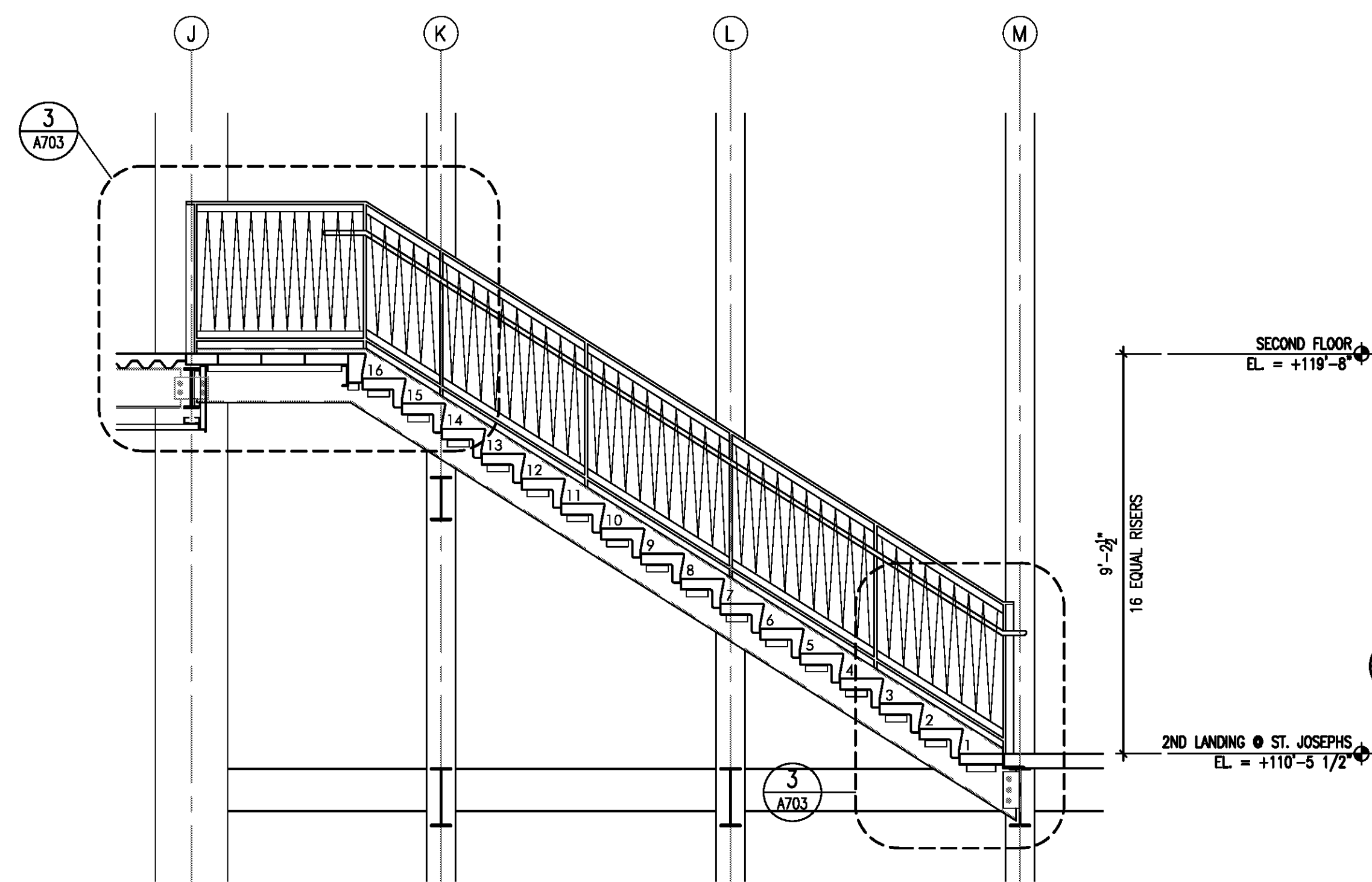


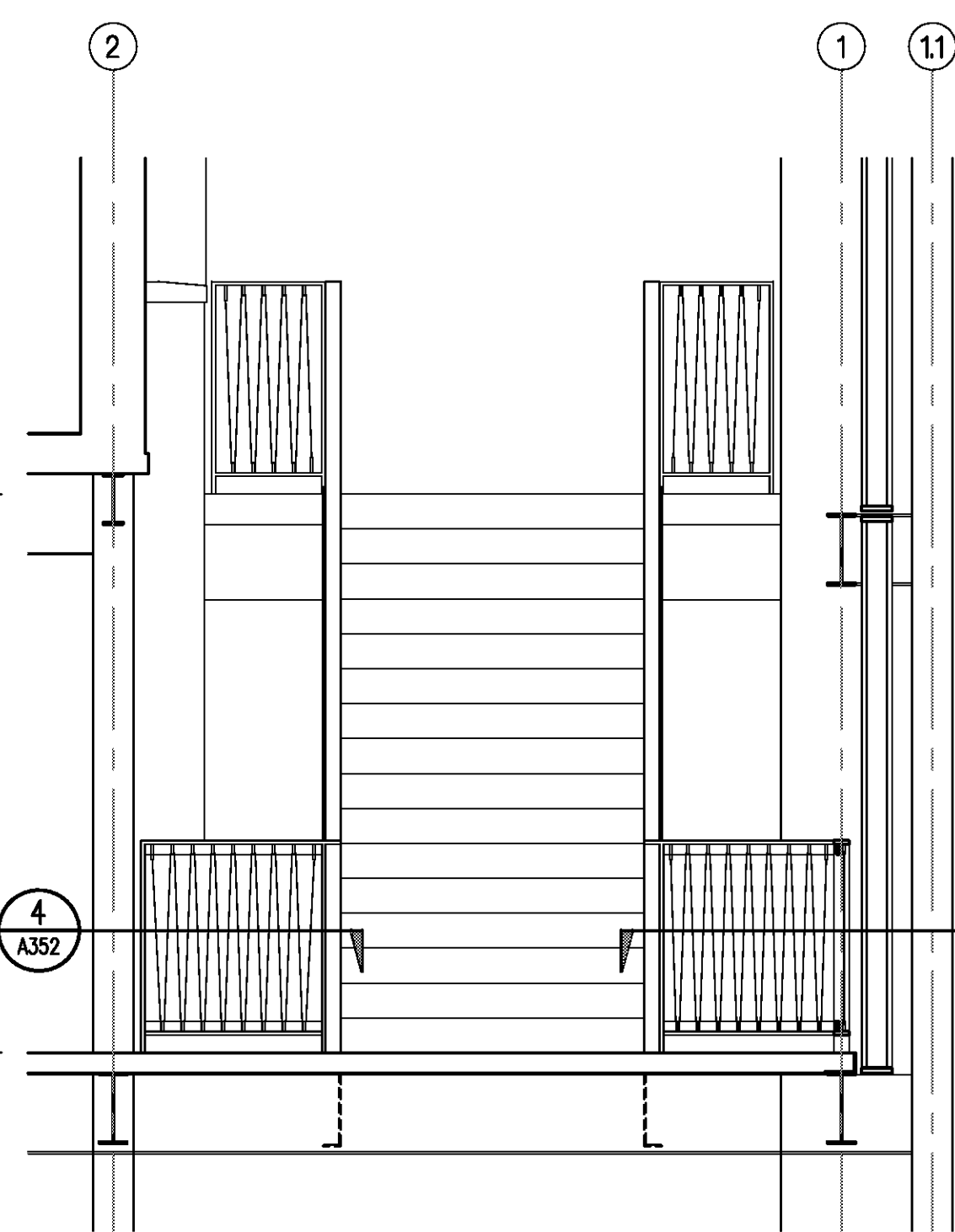
**5** DETAIL - STAIR C  
A705 | A705 Scale: 1" = 1'-0"



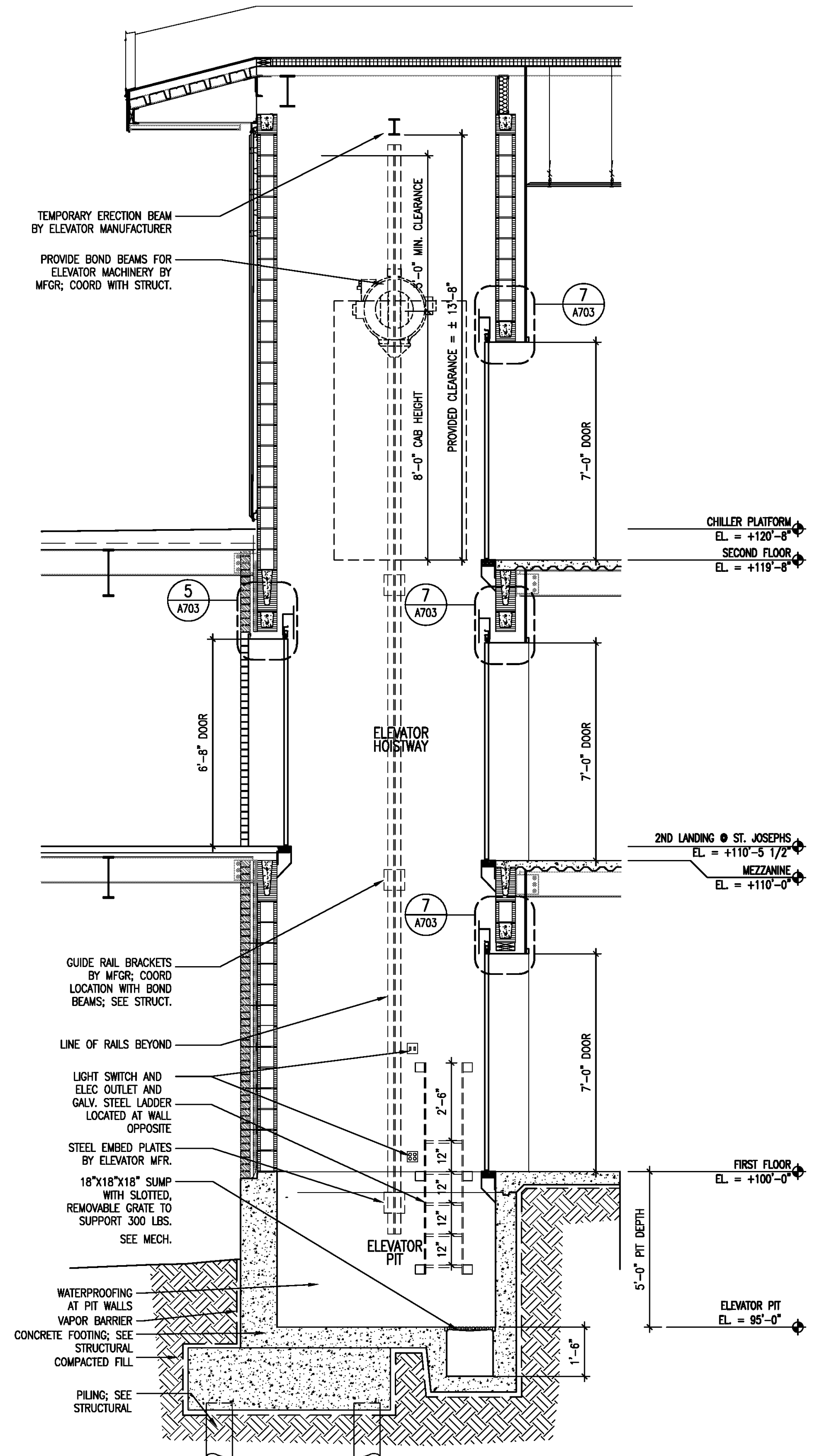
**4** DETAIL - STAIR C  
A705 | A705 Scale: 1" = 1'-0"



**3** SECTION - STAIR C  
A701 | A705 LOOKING SOUTH Scale: 3/8" = 1'-0"



**2** SECTION - STAIR C  
A701 | A705 LOOKING EAST Scale: 3/8" = 1'-0"



**1** SECTION - ELEVATOR  
A703 | A705 LOOKING NORTH Scale: 3/8" = 1'-0"

COPYRIGHT © 2009 by Waggoner & Ball Architects, APC.  
All rights reserved. No part of the work covered by the copyright herein may be reproduced or used in any form or by any means - graphic, electronic or mechanical, including photocopying, recording, taping or information storage and retrieval systems - without written permission of the copyright holder.

SHEET TITLE:  
**STAIR C / ELEVATOR SECTIONS  
AND DETAILS, NEW BUILDING**

DATE: JAN 08, 2010  
DRAWN BY: JRD  
REVISION:

