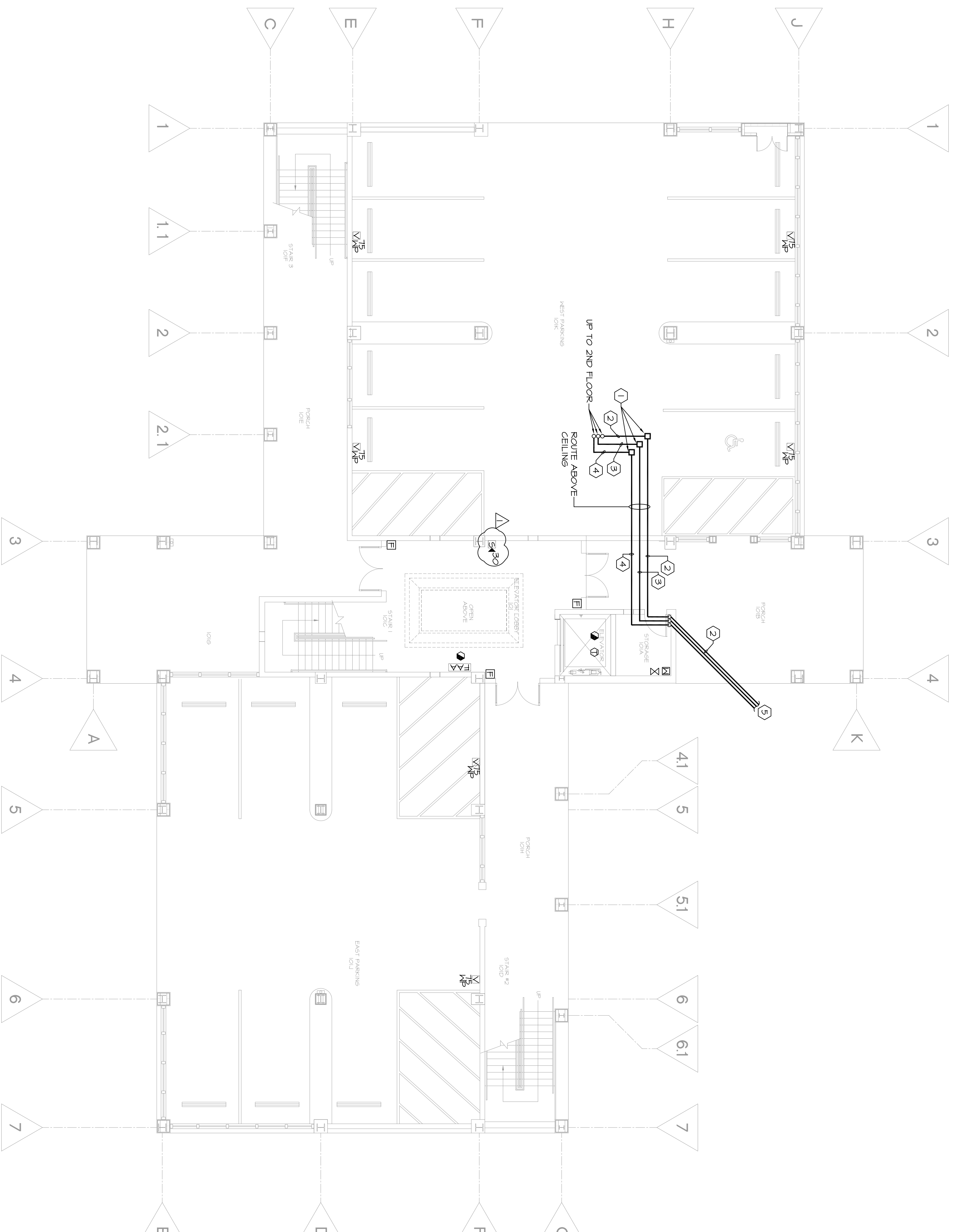


GENERAL NOTES THIS SHEET.  
A. SEE SHEET EA01 FOR DEVICE LEGEND.

- SPECIFIC NOTES THIS SHEET.
- ① PULL BOX ABOVE CEILING.
  - ② 2" CONDUIT WITH PULL WIRE FOR CABLE TV.
  - ③ 6" CONDUIT WITH 2-2" INNER DUCT WITH PULL WIRE FOR DATA.
  - ④ 6" CONDUIT WITH 2-2" INNER DUCT WITH PULL WIRE FOR TELECOMMUNICATIONS.
  - ⑤ ROUTE UNDERGROUND; SEE SHEET ME01 FOR CONTINUATION.



1 FIRST FLOOR PLAN - SPECIAL SYSTEMS  
E301  
1/8"=1'-0"  
NORTH



THE INFORMATION CONTAINED IN THIS DOCUMENT IS PROPRIETARY TO LUCIEN T. VIVIEN, JR. AND HIS ASSOCIATES, INC. ANY REPRODUCTION OR DISSEMINATION OF THIS DOCUMENT WITHOUT THE WRITTEN CONSENT OF LUCIEN T. VIVIEN, JR. AND HIS ASSOCIATES, INC. IS PROHIBITED.

**LUCIEN T. VIVIEN JR. AND ASSOCIATES, INC.**  
CONSULTING ENGINEERS  
1321 HIGHWAY AVENUE - SUITE 100  
HARRAH, LOUISIANA, 70123  
T (504) 218-5409 F (504) 218-5412  
www.vivienengineers.com

**PROJECT DESIGN GROUP, LLC**  
300 LAFAYETTE STREET, SUITE 200  
NEW ORLEANS, LOUISIANA 70130  
(504) 523-6472 FAX (504) 529-1181

**REK ARCHITECTS, LLC**  
21489 KOOP DRIVE, SUITE 5  
MANDEVILLE, LOUISIANA 70471  
(985) 875-7534 FAX (985) 875-7837

no.	revisions	date
1	ADDENDUM #2	11-13-09
2		
3		
4		
5		

**SLIDELL MUNICIPAL CENTER BUILDING 2**  
SLIDELL, LA

**FIRST FLOOR PLAN - SPECIAL SYSTEMS**

File name	E301.dwg	Drawing number	E301
Project number	51093.02		
Date	9-05-09		
Phase	100% FIRE MARSHAL		