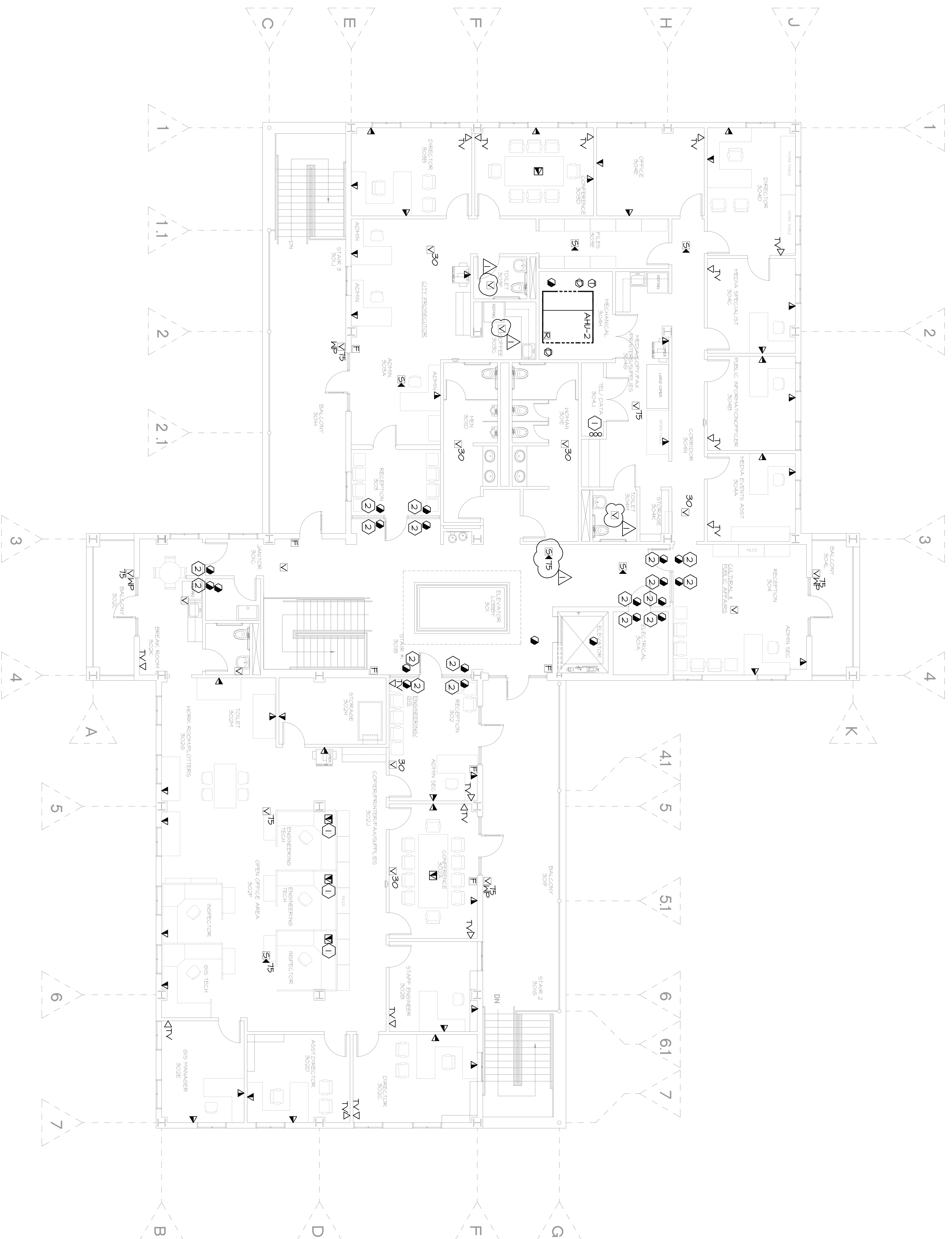


GENERAL NOTES THIS SHEET.
 A. MOUNT TV RECEPTACLE AT 90" ABOVE FINISHED FLOOR (AFF) TO COINCIDE WITH POWER RECEPTACLE.

SPECIFIC NOTES THIS SHEET.

- 1 PROVIDE 3-4" SLEEVES IN FLOOR FOR TEL/DATA AND CABLE WIRING INSTALLATION.
- 2 AIR DUCT SMOKE DETECTOR, INTERLOCK SMOKE DETECTOR WITH SMOKE & SMOKE/FIRE DAMPERS. SEE SHEET E205



1 THIRD FLOOR PLAN - SPECIAL SYSTEMS

E303 1/8"=1'-0"



SEPTEMBER 5, 2009

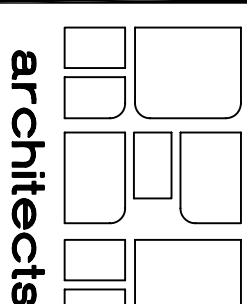
THE INFORMATION CONTAINED IN THIS DOCUMENT IS PROPRIETARY TO LUCIEN T. VIVIEN, JR. & ASSOCIATES, INC. IT IS TO BE KEPT CONFIDENTIAL AND NOT DISCLOSED, REPRODUCED, COPIED, OR USED FOR ANY PURPOSE IN WHOLE OR IN PART WITHOUT THE PRIOR WRITTEN CONSENT OF LUCIEN T. VIVIEN, JR. & ASSOCIATES, INC.

LUCIEN T. VIVIEN JR. AND ASSOCIATES, INC.
 CONSULTING ENGINEERS
 1321 HIGHWAY AVENUE - SUITE 100
 HARRAH, LOUISIANA, 70123
 T (504) 218-5409 F (504) 218-5412
 www.vivienengineers.com



PROJECT DESIGN GROUP, LLC
 300 LAFAYETTE STREET, SUITE 200
 NEW ORLEANS, LOUISIANA 70130
 (504) 523-6472 FAX (504) 529-1181

REK ARCHITECTS, LLC
 21489 KOOP DRIVE, SUITE 5
 MANDEVILLE, LOUISIANA 70471
 (985) 875-7534 FAX (985) 875-7837



revisions		
no.	revision	date
1	ADDENDUM #2	11-13-09
2		
3		
4		
5		

**SLIDELL MUNICIPAL CENTER
 BUILDING 2**
 SLIDELL, LA

THIRD FLOOR PLAN - SPECIAL SYSTEMS

File name	E303.dwg	drawing number	E303
Project number	51093.02		
date	9-05-09		
phase	100% FIRE		
	MARSHAL		