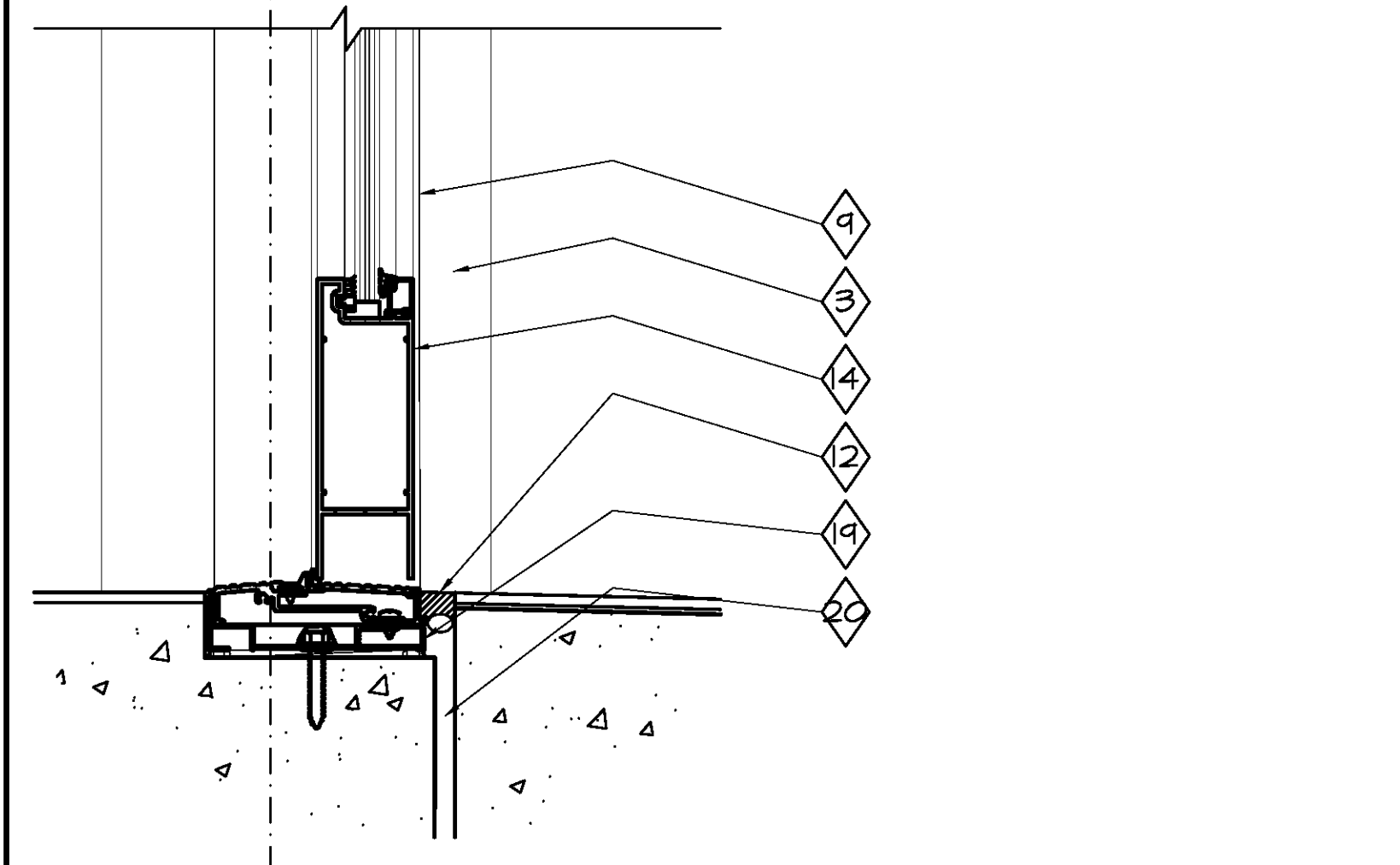
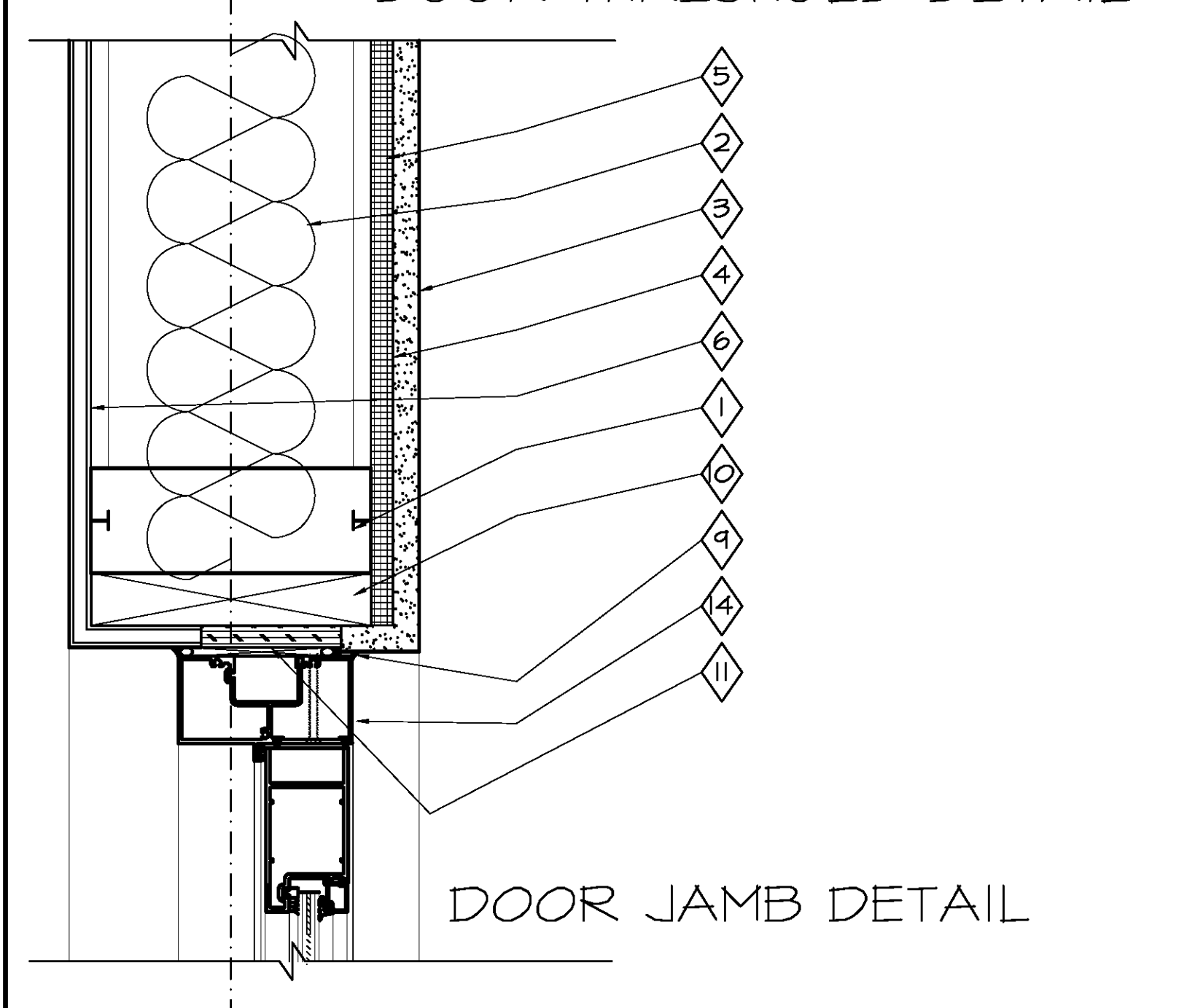


DOOR HEAD DETAIL

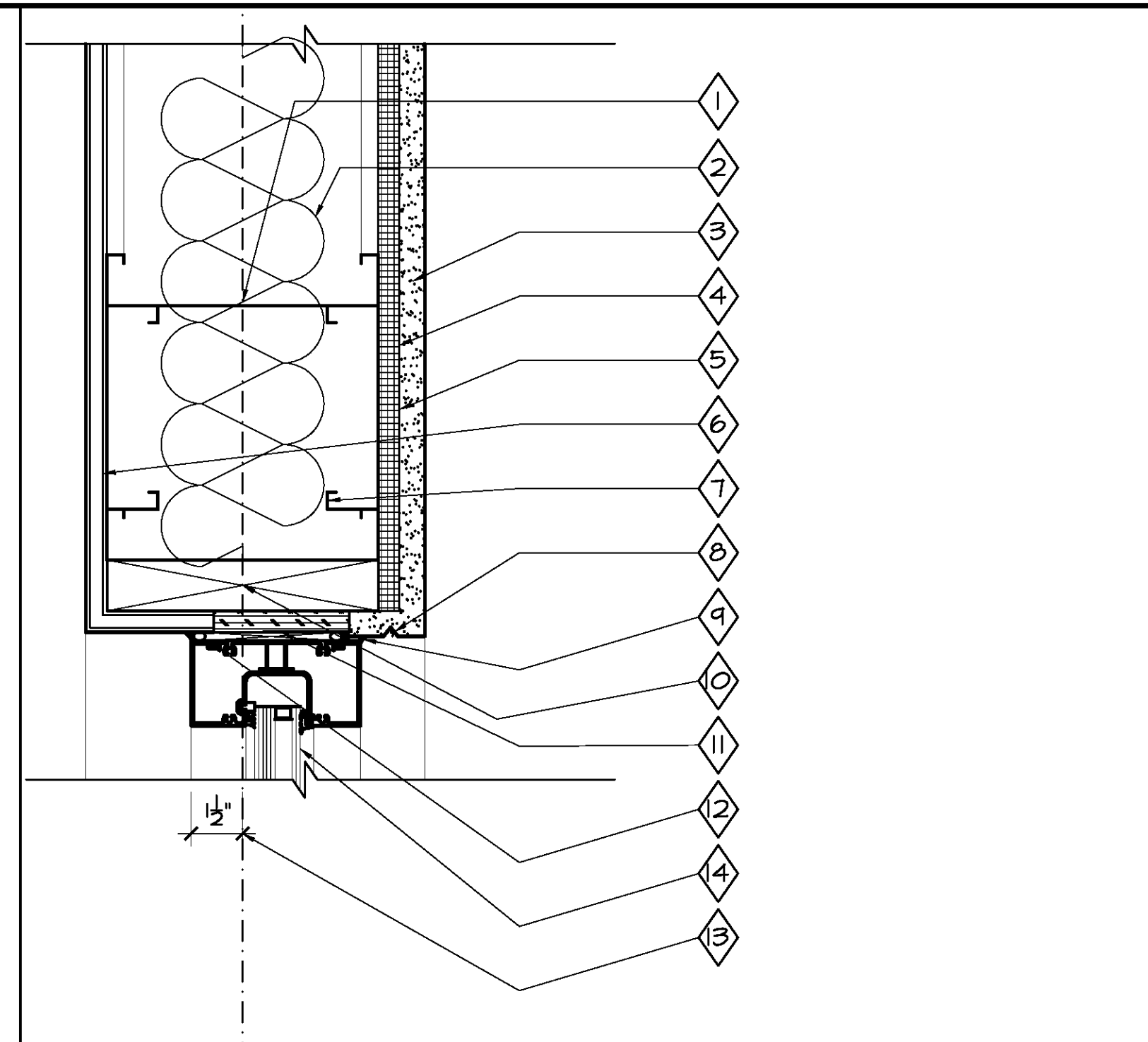


DOOR THRESHOLD DETAIL

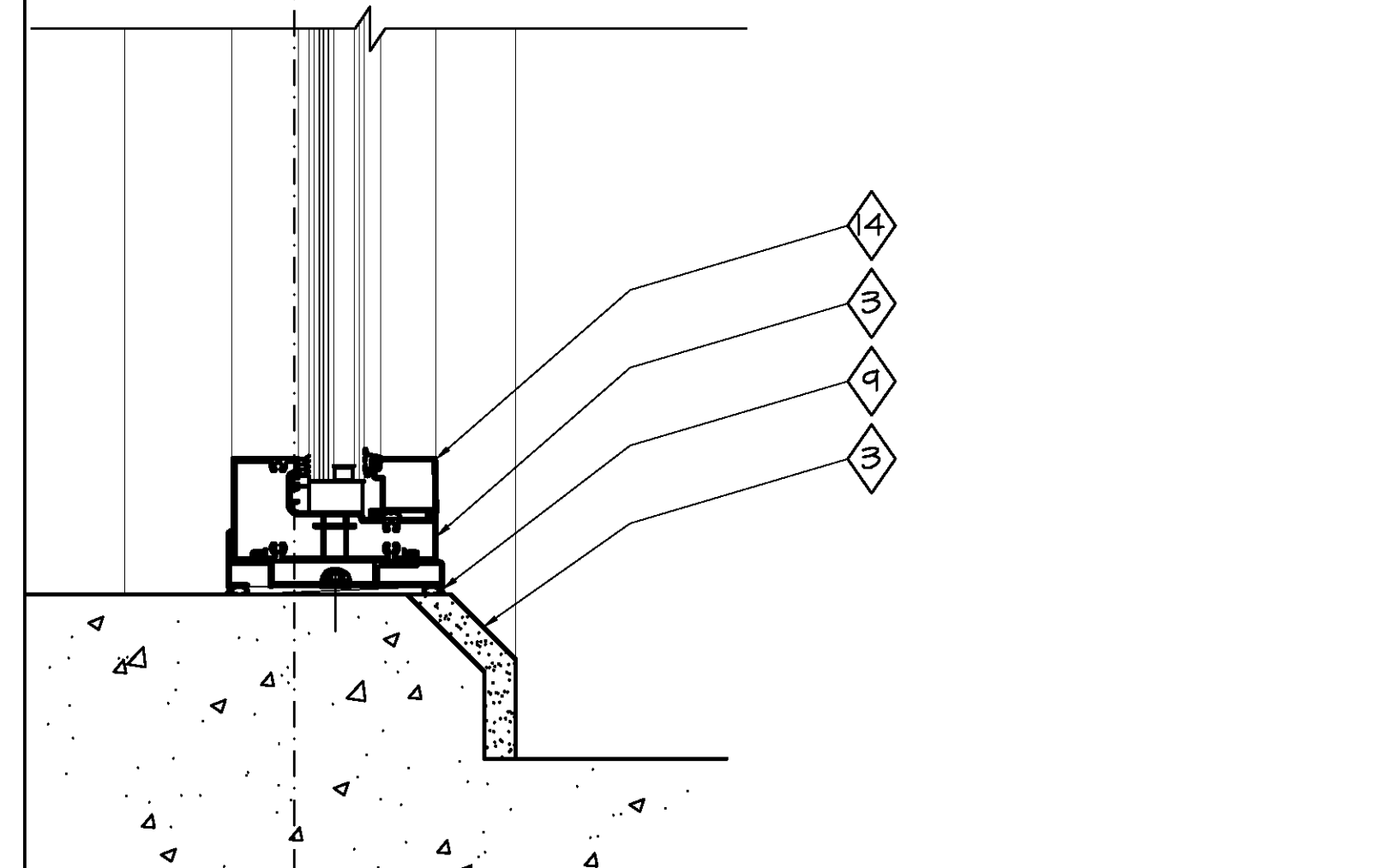


DOOR JAMB DETAIL

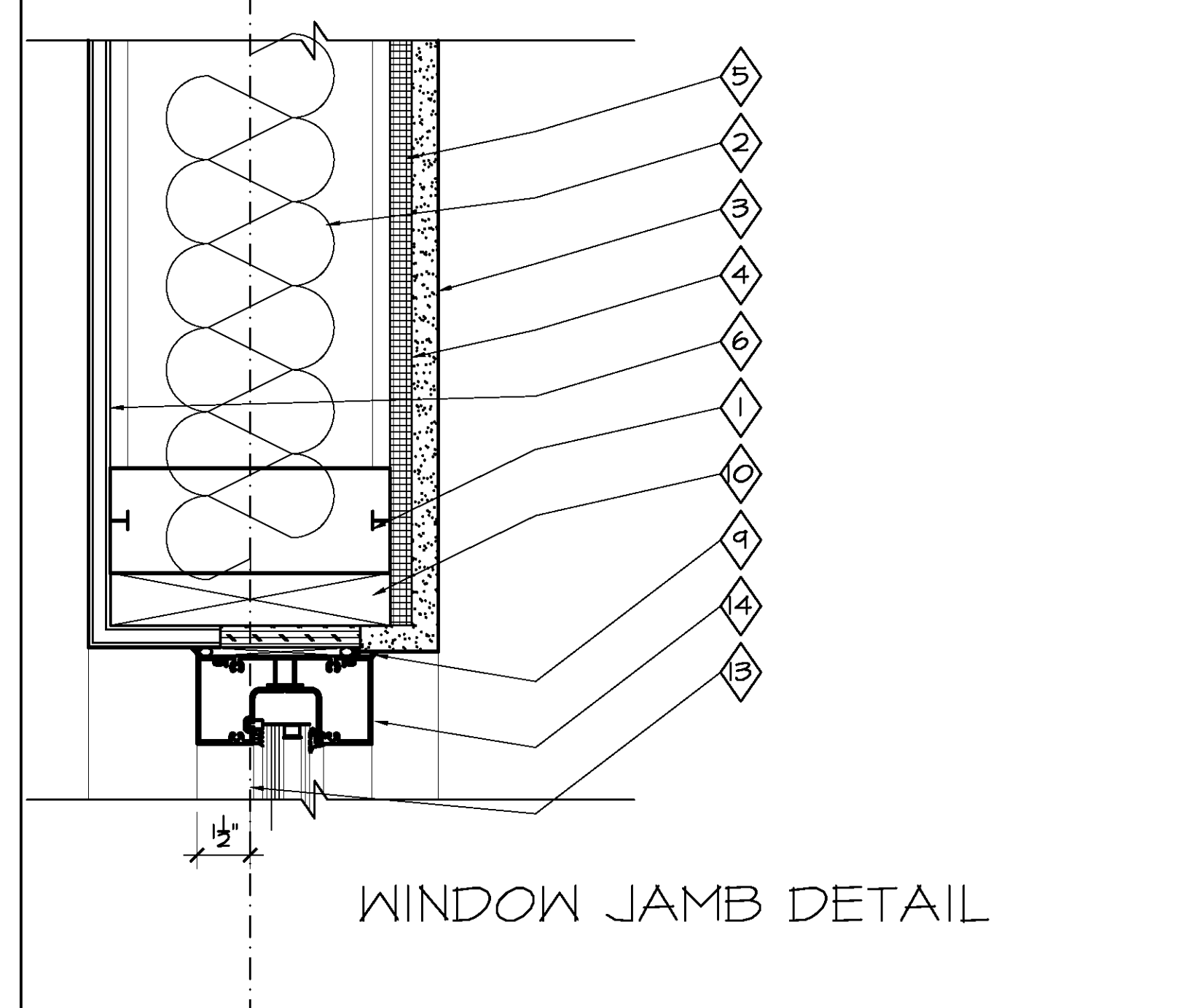
3. DOOR DETAILS
SCALE: 3" = 1'-0"



WINDOW HEAD DETAIL

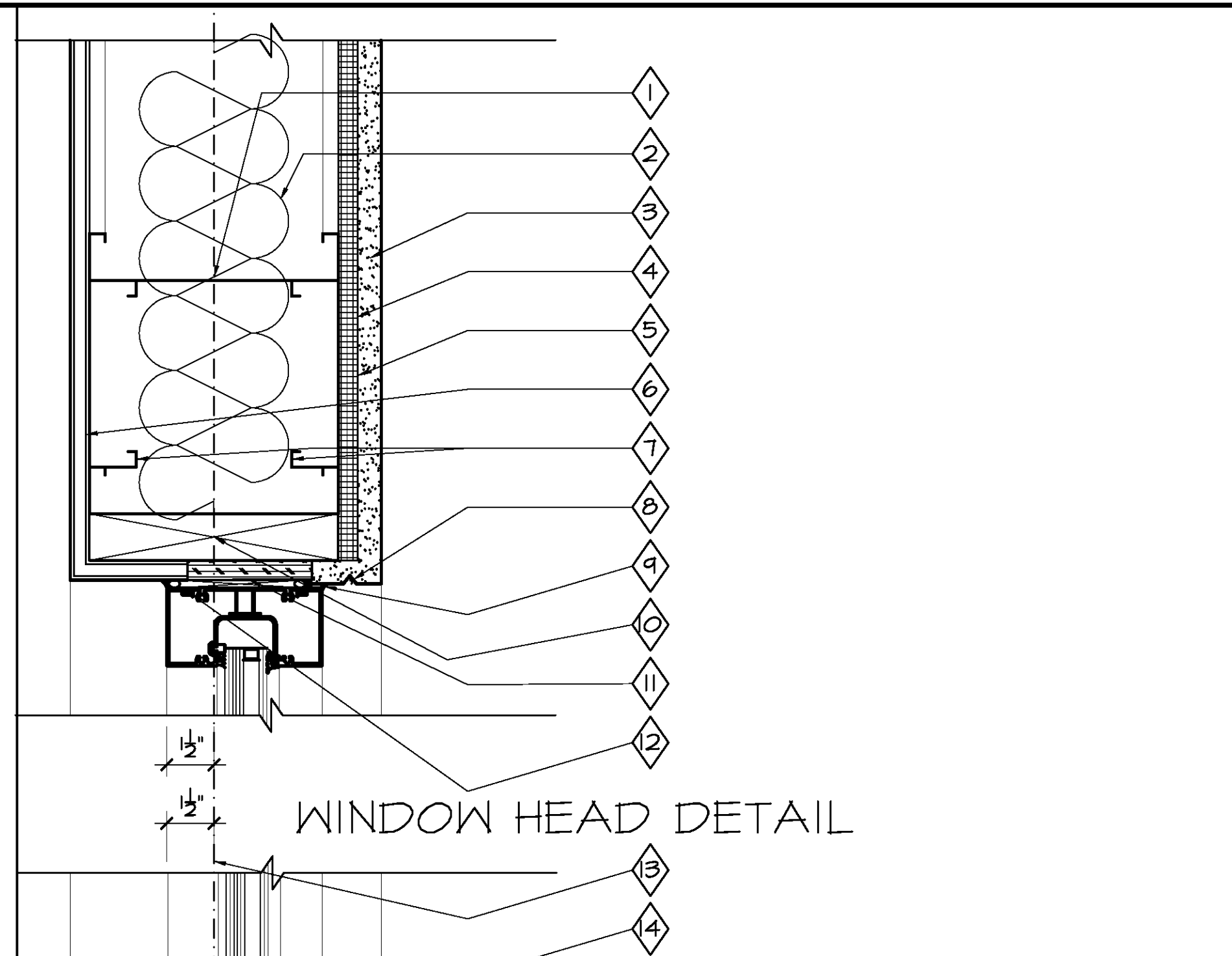


WINDOW SILL DETAIL

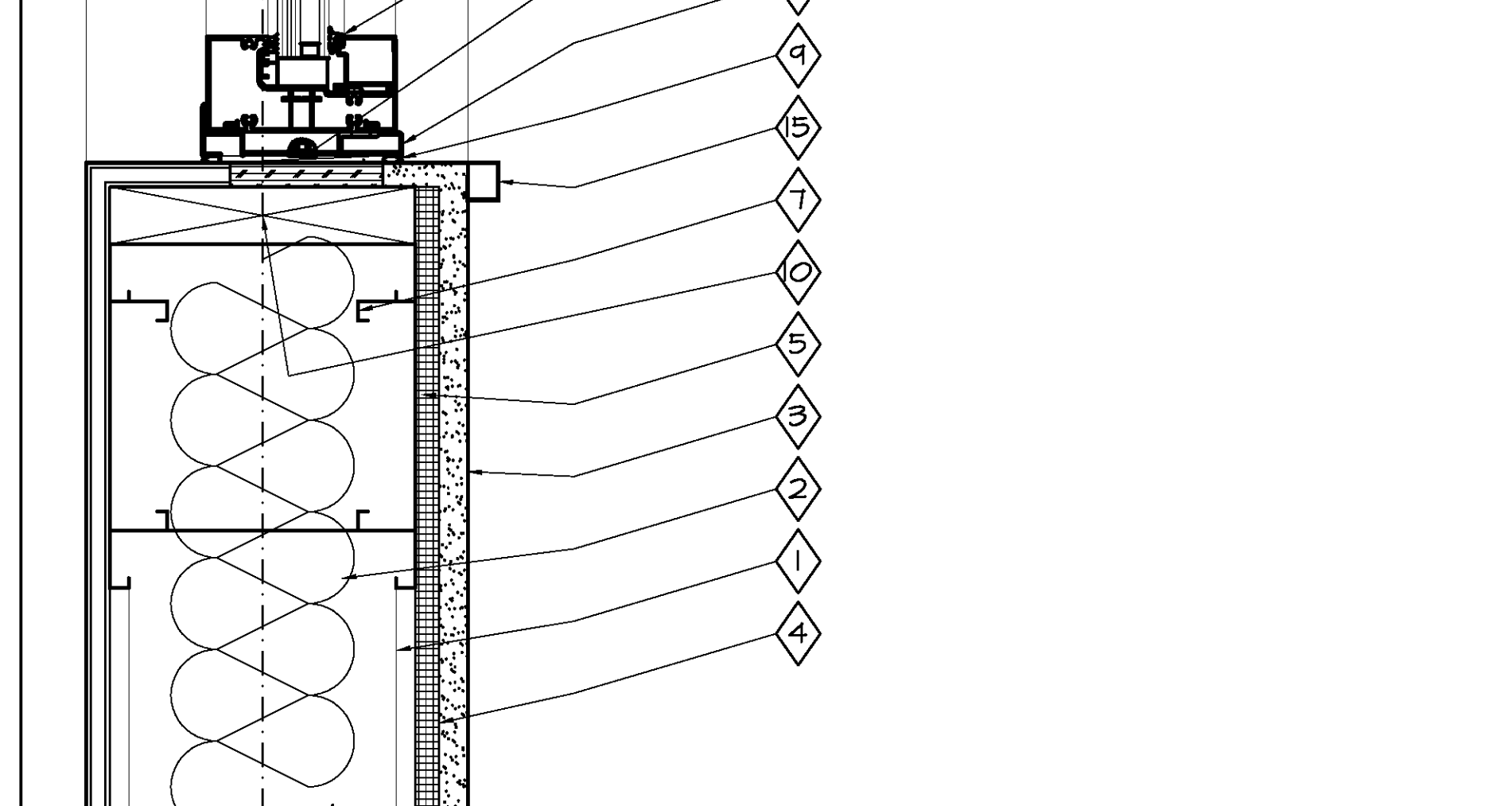


WINDOW JAMB DETAIL

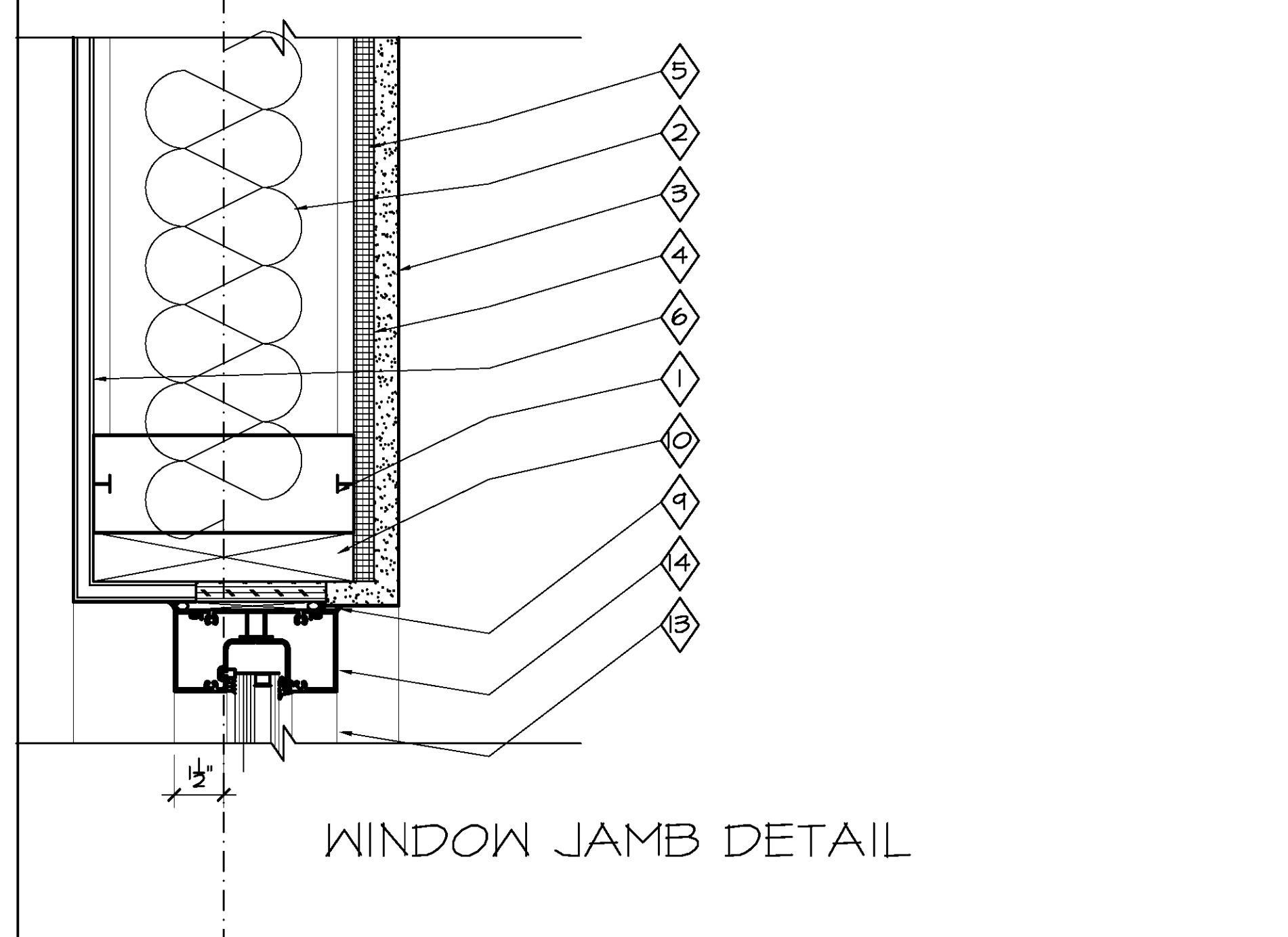
2. WINDOW DETAILS
SCALE: 3" = 1'-0"



WINDOW HEAD DETAIL



WINDOW SILL DETAIL



WINDOW JAMB DETAIL

1. WINDOW DETAILS
SCALE: 3" = 1'-0"

- 1 8" METAL FRAMING 16 GA @ 16" O.C., RE: (09111)
- 2 BATT INSULATION, RE: (07212)
- 3 3/4" PORTLAND CEMENT PLASTER W 1/8" ACRYLIC FINISH COAT, RE: (09220)
- 4 FLUID-APPLIED MEMBRANE AIR BARRIERS APPLIED OVER EXTERIOR GYP. BD., RE: (07272)
- 5 3/8" GLASS-REINFORCED EXTERIOR GYP. BD., RE: (09260)
- 6 3/8" GYPSUM BOARD, RE: (09260)
- 7 8" METAL FRAMING 16 GA DOUBLE HEADER, RE: (09111)
- 8 RAKED DRIP EDGE IN PORTLAND CEMENT PLASTER W 1/8" ACRYLIC FINISH COAT, RE: (09220)
- 9 JOINT SEALERS ALL AROUND FRAME, RE: (07900)
- 10 TREATED 2X CONTINUOUS WOOD NAILER, RE: (06100)
- 11 TREATED CONTINUOUS 3/4" WOOD NAILER, RE: (06100)
- 12 SHIM WITH BACKER ROD & JOINT SEALERS ALL AROUND FRAME BOTH SIDES, RE: (07900)
- 13 CENTER LINE OF METAL STUD FRAMING
- 14 ALUMINUM-FRAMED ENTRANCES AND STOREFRONTS, RE: (08410)
- 15 ALUMINUM FLASHING, RE: (08410)
- 16 RE: FINISH SCHEDULE
- 17 CAST-IN-PLACE CONCRETE, RE: (03300)
- 18 TILE, RE: FINISH SCHEDULE, RE: (09300)
- 19 WEEP HOLE
- 20 1/2" OPEN SPACE TO GRAVEL FILL FOR WEEP HOLE

PROJECT DESIGN GROUP, LLC
300 LAFAYETTE STREET, SUITE 200
NEW ORLEANS, LOUISIANA 70130
(504) 523-6472 FAX (504) 529-1181

SIZELER THOMPSON BROWN ARCHITECTS

REK ARCHITECTS, LLC
21489 KOOP DRIVE, SUITE 5
MANDEVILLE, LOUISIANA 70471
(985) 875-7534 FAX (985) 875-7837

architects

revisions		
no.	revision	date

**SLIDELL MUNICIPAL CENTER
BUILDING 2**
SLIDELL, LA

DOOR AND WINDOW DETAILS

	file name	drawing number
	project number	51093.02
	date	9-5-09
	phase	CD

A4.2