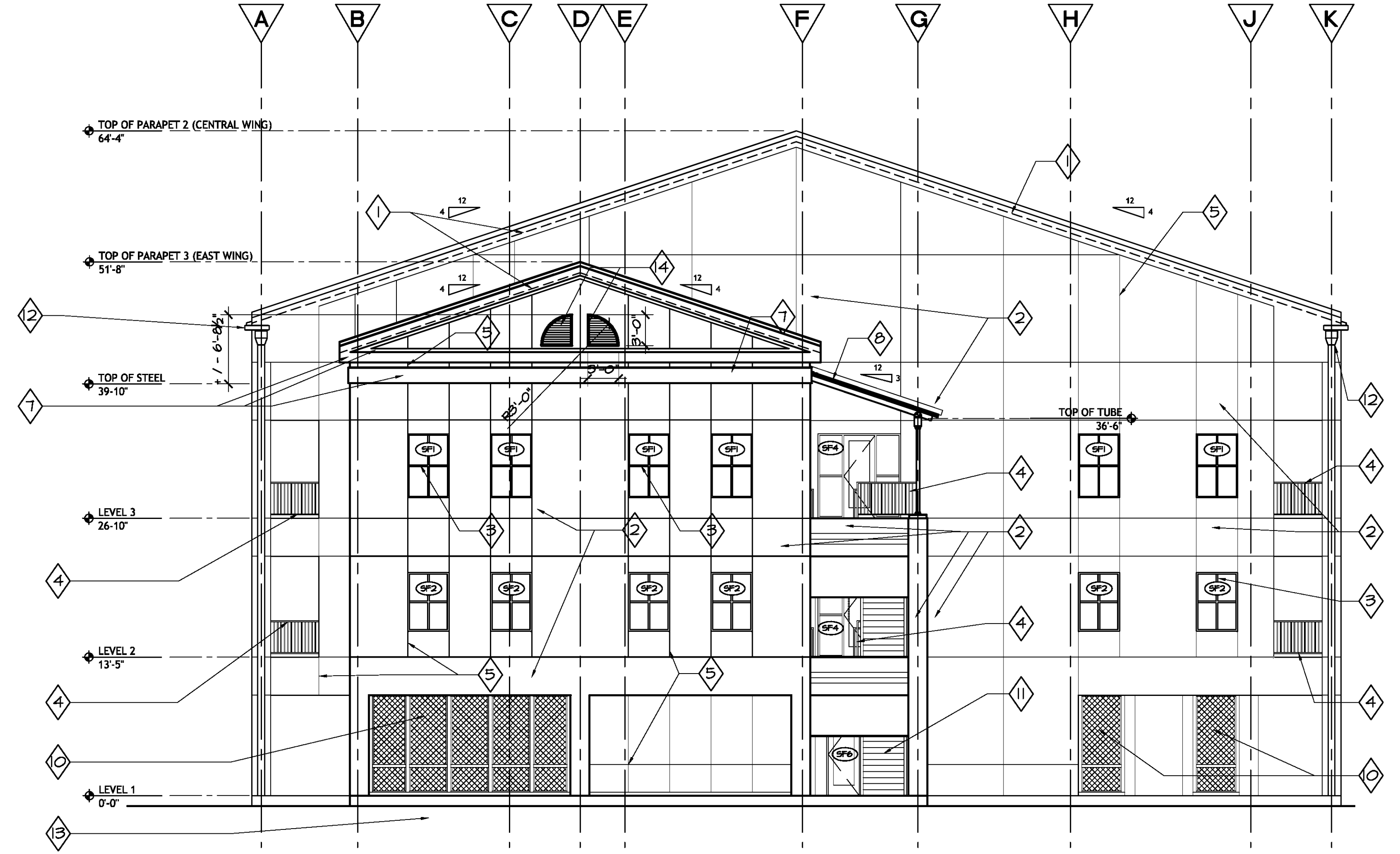


**2. BUILDING ELEVATION - WEST**  
SCALE: 1/8" = 1'-0"



**1. BUILDING ELEVATION - EAST**  
SCALE: 1/8" = 1'-0"

- 1 STANDING SEAM ROOF SYSTEM, RE: (07411)
- 2 3/4" PORTLAND CEMENT PLASTER W/ 1/2" ACRYLIC FINISH COAT, RE: (09220)
- 3 ALUMINUM STOREFRONT AND ENTRANCES, RE: (08410)
- 4 HANDRAILS AND RAILINGS, RE: (05520)
- 5 CONTROL JOINT, RE: (09220)
- 6 SHEET METAL FLASHING AND TRIM, RE: (07552)
- 7 EFIS BANDING, RE: (09220)
- 8 TRANSLUCENT WALL AND ROOF ASSEMBLIES, RE: (08950)
- 9 METAL GUTTER AND DOWN SPOUTS, RE: (07411)
- 10 VINYL LATTICE SCREEN 1 1/2" WIDE X 1/2" THICK WITH 2 3/4" DIAGONAL OPENING TYP. WITH VINYL POSTS AND RAILING
- 11 METAL STAIRS, RE: (05510)
- 12 METAL GUTTER & DOWNSPOUT, RE: (07411)
- 13 NEW GRASS
- 14 ALUM. LOUVERS, RE: (10210)

**PROJECT DESIGN GROUP, LLC**  
300 LAFAYETTE STREET, SUITE 200  
NEW ORLEANS, LOUISIANA 70130  
(504) 523-6472 FAX (504) 529-1181

**SIZELER  
THOMPSON  
BROWN  
ARCHITECTS**

**REK ARCHITECTS, LLC**  
21489 KOOP DRIVE, SUITE 5  
MANDEVILLE, LOUISIANA 70471  
(985) 875-7534 FAX (985) 875-7837

**architects**

revisions		
no.	revision	date

**SLIDELL MUNICIPAL CENTER  
BUILDING 2**  
SLIDELL, LA

ELEVATION - EAST AND WEST

	file name	drawing number
	project number	51093.02
	date	9-5-09
	phase	CD

**A5.1**