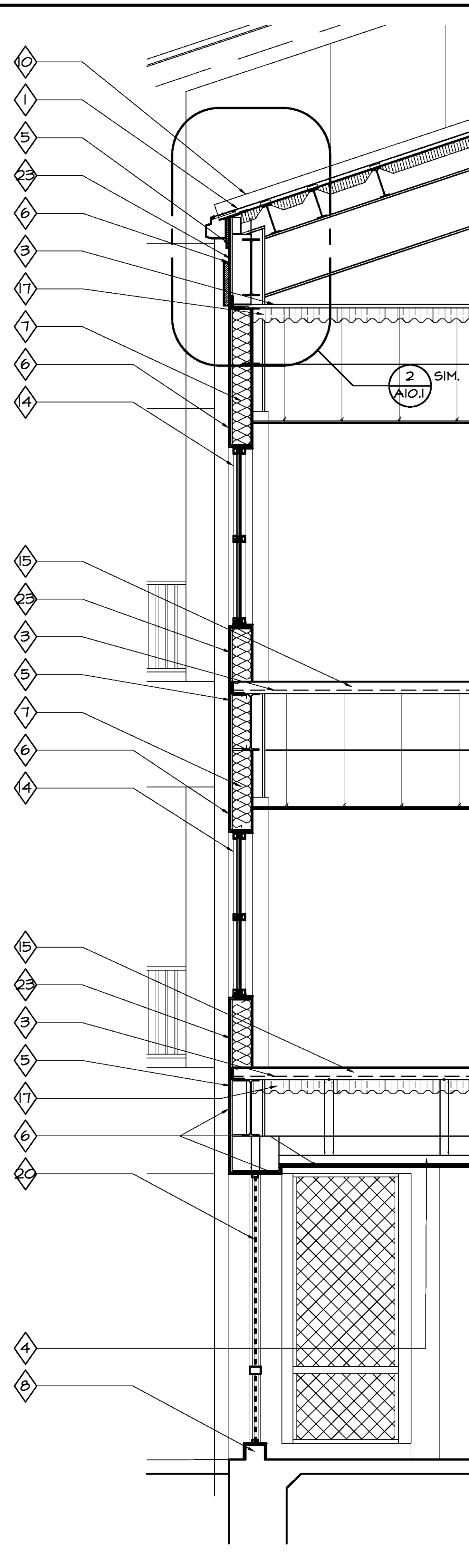
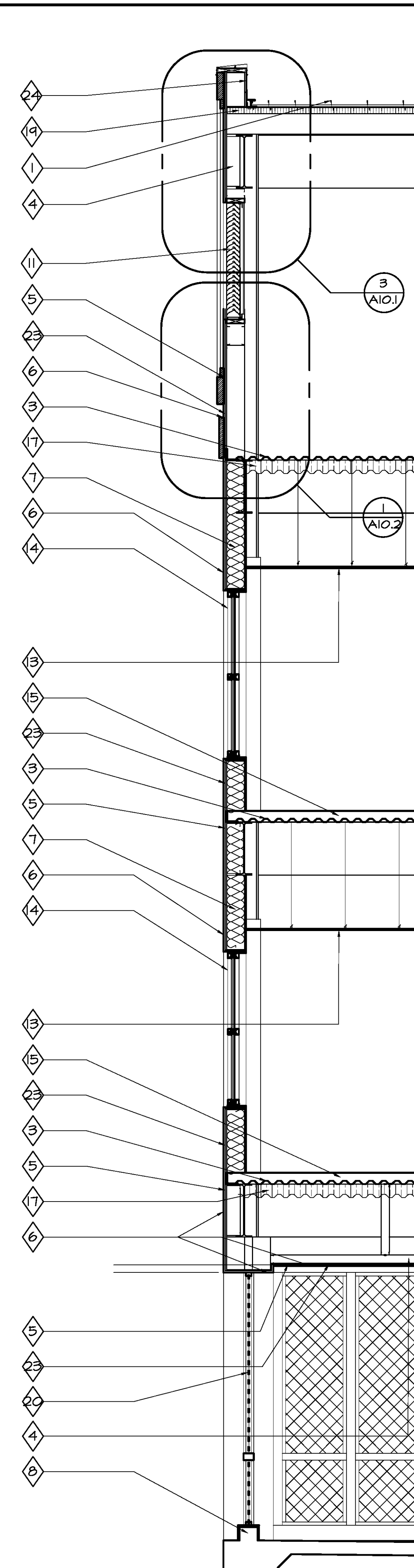


3. WALL SECTION
SCALE: 3/8" = 1'-0"



2. WALL SECTION
SCALE: 3/8" = 1'-0"



1. WALL SECTION
SCALE: 3/8" = 1'-0"

- 1) STANDING SEAM ROOF SYSTEM, RE: (07411)
- 2) STRUCTURAL STEEL RE: STRUCTURAL (05120)
- 3) STEEL DECK, RE: (05310)
- 4) COLD-FORMED METAL FRAMING, RE: (05400 & 09111)
- 5) 3/8" GLASS-REINFORCED EXTERIOR GYP. BD., RE: (09260)
- 6) 3/8" PORTLAND CEMENT PLASTER W 1/8" ACRYLIC FINISH COAT, RE: (09220)
- 7) BATT INSULATION, RE: (07212)
- 8) CONCRETE CURB SURFACED W 3/4" STUCCO, RE: AI
- 9) 3/8" GYPSUM BOARD (TYPE "X" AS SHOWN ON WALL TYPES), RE: (09260)
- 10) SHEET METAL FLASHING AND TRIM, RE: (07552)
- 11) LOUVERS & VENTS, RE: (10210)
- 12) EXPOSED AGGREGATE CONCRETE MATCH EXISTING
- 13) ACOUSTICAL TILE CEILINGS, RE: (09513)
- 14) ALUMINUM-FRAMED ENTRANCES AND STOREFRONTS, RE: (08410)
- 15) CAST-IN-PLACE CONCRETE, RE: (03300)
- 16) PIPE AND TUBE RAILINGS, RE: (05520)
- 17) SPRAY - ON FOAM INSULATION, RE: (07212)
- 18) TILE, RE: FINISH SCHEDULE, RE: (09300)
- 19) 4' VINYL FACED INSULATION (07212)
- 20) VINYL LATTICE SCREEN 1 1/2" WIDE X 1/2" THICK WITH 2 3/8" DIAGONAL OPENING TYP. WITH VINYL POSTS AND RAILING
- 21) BRICK BAND, RE: A0.1 AND CIVIL DRAWINGS
- 22) REINFORCED, HOT APPLIED MEMBRANE WATERPROOFING UNDER TILE, RE: (07141)
- 23) FLUID-APPLIED MEMBRANE AIR BARRIERS APPLIED OVER EXTERIOR GYP. BD., RE: (07212)
- 24) METAL PANEL TO MATCH STANDING SEAM METAL ROOF W REQUIRED SUBSTRATE PER MANUFACTURER (TYP), RE: (07411)
- 25) STEEL COLUMN RE: STRUCTURAL (05120)

PROJECT DESIGN GROUP, LLC
300 LAFAYETTE STREET, SUITE 200
NEW ORLEANS, LOUISIANA 70130
(504) 523-6472 FAX (504) 529-1181

SIZELER THOMPSON BROWN ARCHITECTS

REK ARCHITECTS, LLC
21489 KOOP DRIVE, SUITE 5
MANDEVILLE, LOUISIANA 70471
(985) 875-7534 FAX (985) 875-7837

architects

revisions		
no.	revision	date

**SLIDELL MUNICIPAL CENTER
BUILDING 2**
SLIDELL, LA

WALL SECTIONS

	file name	drawing number
	project number	51093.02
	date	9-5-09
	phase	CD

A6.6