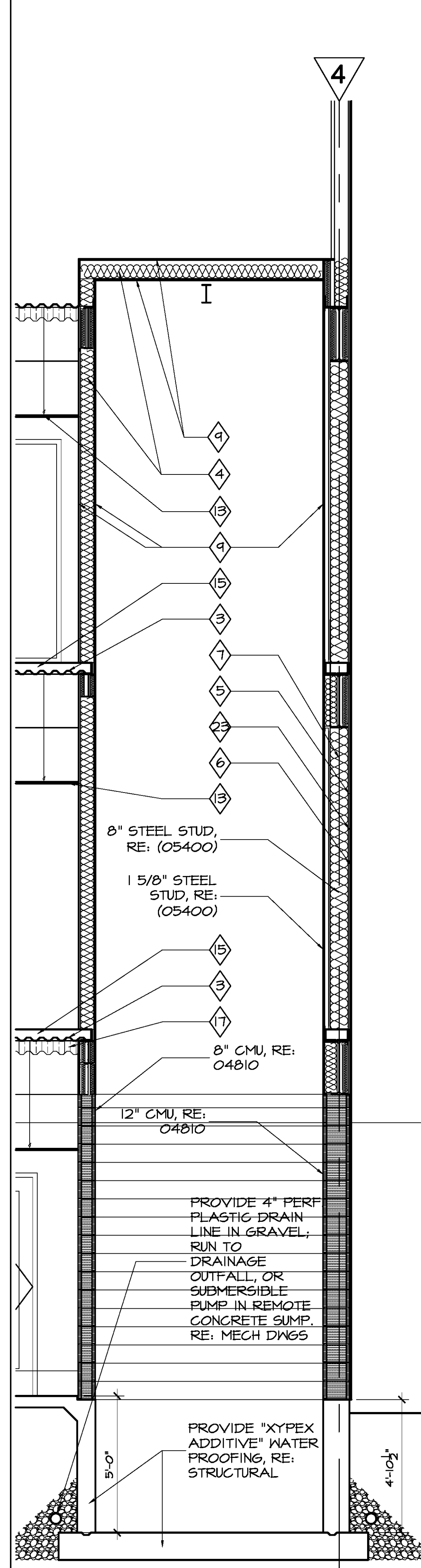
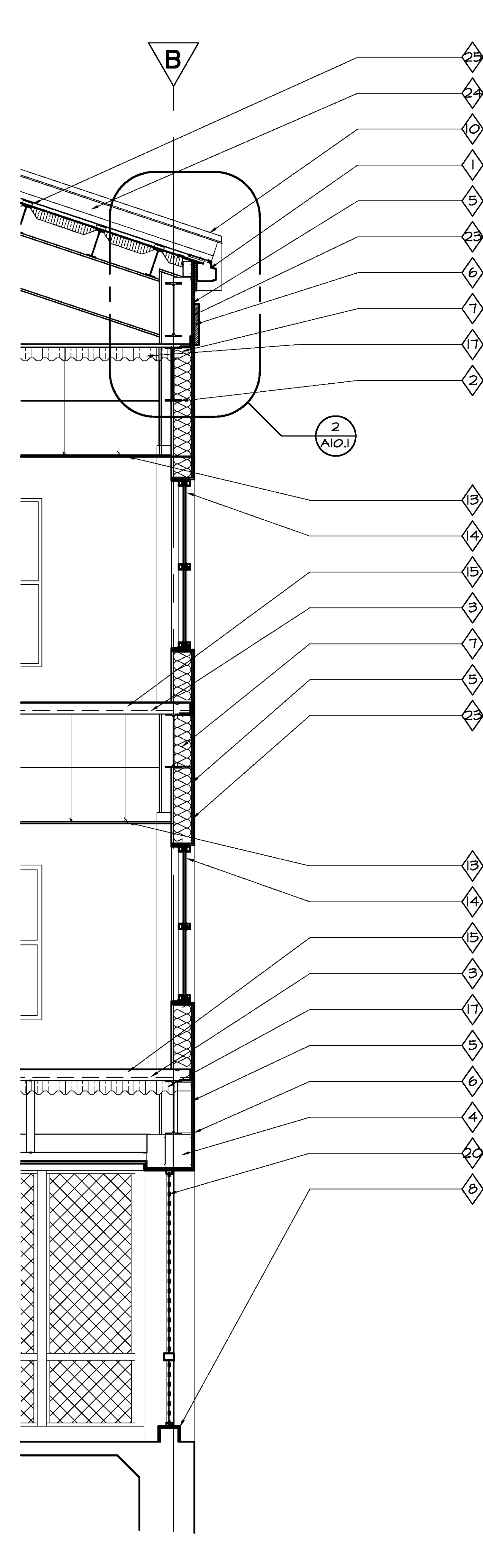


3. WALL SECTION
SCALE: 3/8" = 1'-0"



2. WALL SECTION
SCALE: 3/8" = 1'-0"



1. WALL SECTION
SCALE: 3/8" = 1'-0"

- 1) STANDING SEAM ROOF SYSTEM, RE: (07411)
- 2) STRUCTURAL STEEL RE: STRUCTURAL (05120)
- 3) STEEL DECK, RE: (05310)
- 4) COLD-FORMED METAL FRAMING, RE: (05400 & 09111)
- 5) 3/8" GLASS-REINFORCED EXTERIOR GYP. BD., RE: (09260)
- 6) 3/4" PORTLAND CEMENT PLASTER W 1/8" ACRYLIC FINISH COAT, RE: (09220)
- 7) BATT INSULATION, RE: (07212)
- 8) CONCRETE CURB SURFACED W 3/4" STUCCO, RE: AI
- 9) 3/8" GYPSUM BOARD (TYPE "X" AS SHOWN ON WALL TYPES), RE: (09260)
- 0) SHEET METAL FLASHING AND TRIM, RE: (07552)
- 1) LOUVERS & VENTS, RE: (10200)
- 2) EXPOSED AGGREGATE CONCRETE MATCH EXISTING
- 3) ACOUSTICAL TILE CEILINGS, RE: (09513)
- 4) ALUMINUM-FRAMED ENTRANCES AND STOREFRONTS, RE: (08410)
- 5) CAST-IN-PLACE CONCRETE, RE: (03300)
- 6) PIPE AND TUBE RAILINGS, RE: (05520)
- 7) SPRAY - ON FOAM INSULATION, RE: (07212)
- 8) TILE, RE: FINISH SCHEDULE, RE: (09300)
- 9) 4' VINYL FACED INSULATION (07212)
- 0) VINYL LATTICE SCREEN 1 1/2" WIDE X 1/2" THICK WITH 2 3/8" DIAGONAL OPENING TYP. WITH VINYL POSTS AND RAILING
- 1) BRICK BAND, RE: AO.I AND CIVIL DRAWINGS
- 2) REINFORCED, HOT APPLIED MEMBRANE WATERPROOFING UNDER TILE, RE: (07141)
- 3) FLUID-APPLIED MEMBRANE AIR BARRIERS APPLIED OVER EXTERIOR GYP. BD., RE: (07212)
- 4) METAL PANEL TO MATCH STANDING SEAM METAL ROOF, RE: (07411)
- 5) PARAPET RAKE FLASHING, RE: (07411)

PROJECT DESIGN GROUP, LLC
300 LAFAYETTE STREET, SUITE 200
NEW ORLEANS, LOUISIANA 70130
(504) 523-6472 FAX (504) 529-1181

SIZELER THOMPSON BROWN ARCHITECTS

REK ARCHITECTS, LLC
21489 KOOP DRIVE, SUITE 5
MANDEVILLE, LOUISIANA 70471
(985) 875-7534 FAX (985) 875-7837

architects

revisions		
no.	revision	date

**SLIDELL MUNICIPAL CENTER
BUILDING 2**
SLIDELL, LA

WALL SECTIONS

	file name	drawing number
	project number	51093.02
	date	9-5-09
	phase	CD

A6.7