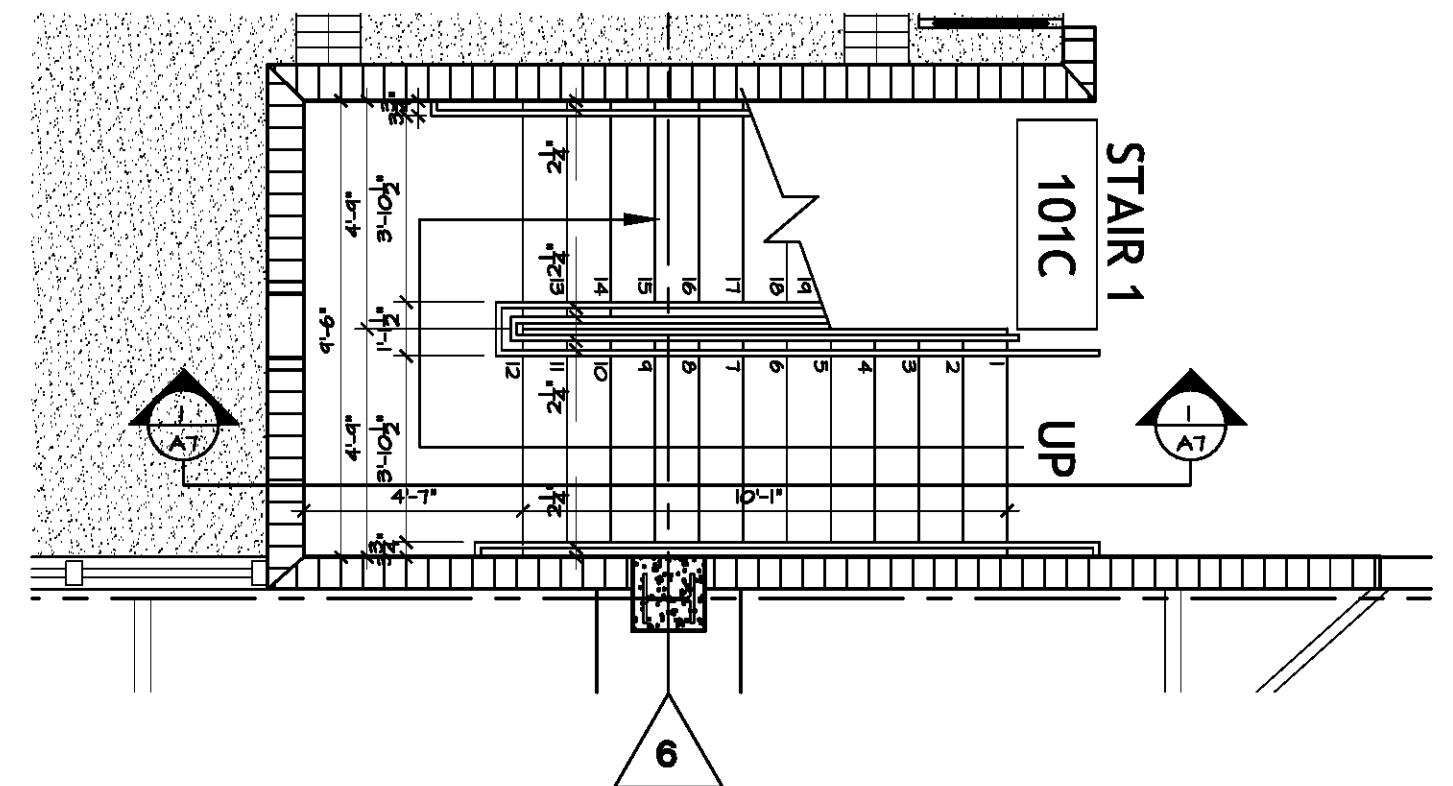
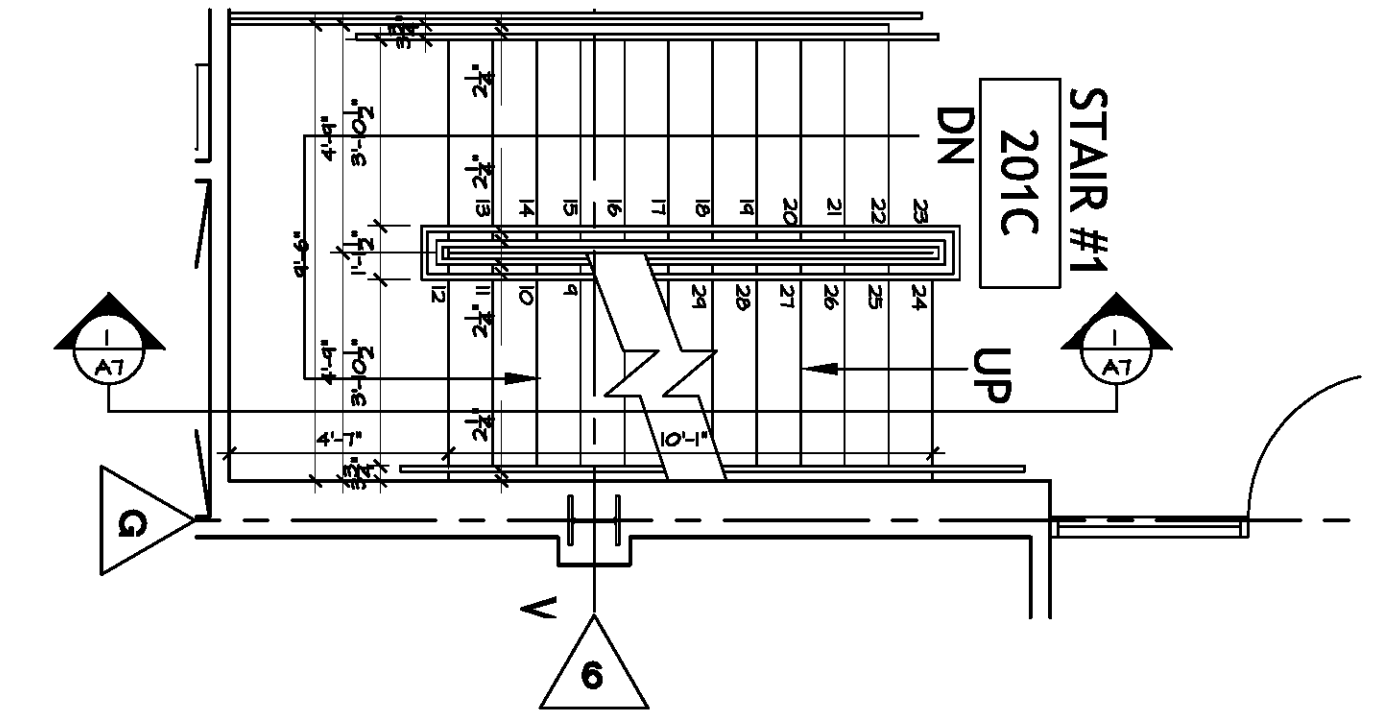


**1. STAIR #1 SECTION**  
SCALE: 3/8" = 1'-0"

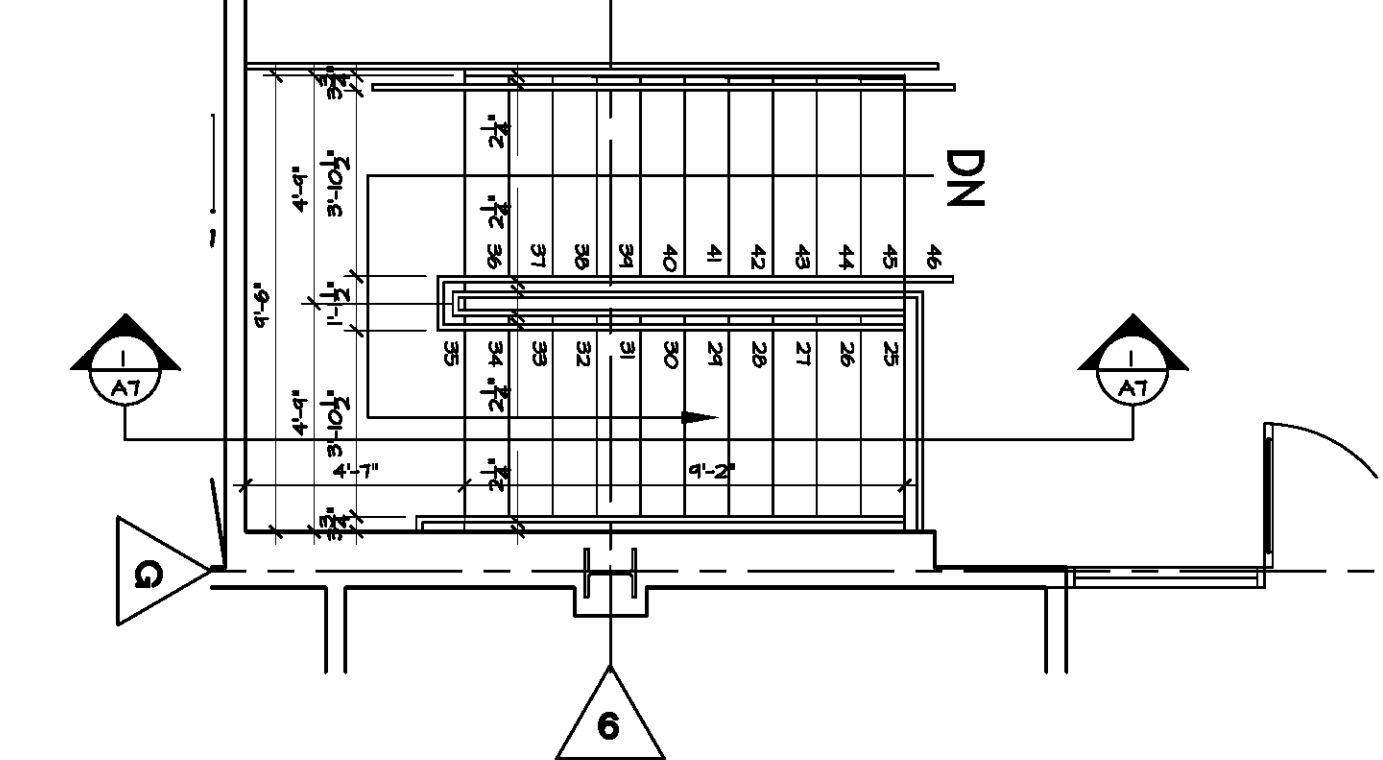
**STAIR NOTES**  
F.F. TO F.F. HGT 161" = 28 EQ RISERS  
COORDINATE W/ STRUCTURAL DWGS.  
VERIFY ALL DIMENSIONS  
WITH SHOP DRAWINGS PROVIDED  
BY STAIR MFR.



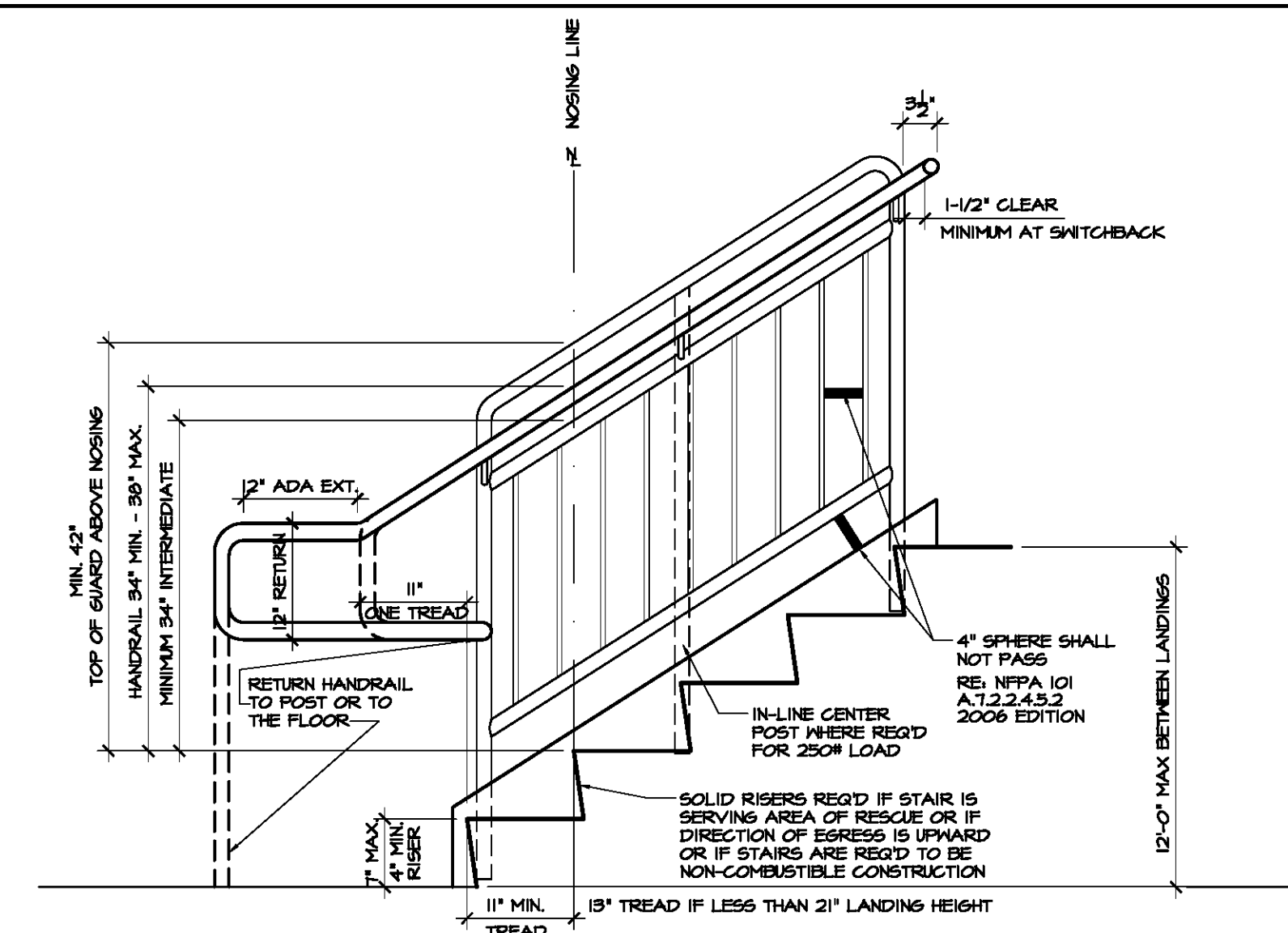
**2. 1ST. LEVEL**  
SCALE: 1/4" = 1'-0"



**3. 2nd. LEVEL**  
SCALE: 1/4" = 1'-0"



**4. 3rd. LEVEL**  
SCALE: 1/4" = 1'-0"



**5. ADA DETAIL (TYPICAL)**  
SCALE: 1/2" = 1'-0"

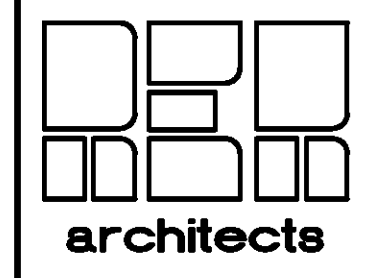
101.1.2.2.4.5 HANDRAIL: 200# CONCENTRATED LOAD + 50# PLF  
1-1/4" MIN. - 2" MAX. O.D., DIAMETER (4" MIN. - 6-1/4" MAX. CIRCUMFERENCE)  
POST: 1-1/2" O.D. X 5/16" WALL THICKNESS

101.1.2.2.4.6 42" HIGH GUARDRAIL: (48" VISUAL BARRIER IF 4 STORY OUTSIDE OPEN STAIR 101.1.2.2.4.2)  
GUARD IS REQUIRED IF LANDING HEIGHT EXCEEDS 50"  
200# LOAD AT TOP RAIL + 50# PLF IN ANY DIRECTION  
INTERMEDIATES TO 34" ABOVE NOSING LINE SO 4" SPHERE SHALL NOT PASS

- 1 STRUCTURAL STEEL RE: STRUCTURAL (05120)
- 2 HANDRAILS AND RAILINGS (05520)
- 3 STEEL DECK (05310)
- 4 ACOUSTICAL TILE CEILINGS (09511)
- 5 SBS-MODIFIED BITUMINOUS MEMBRANE ROOFING (07552)
- 6 ROOF HATCH MANUFACTURED ROOF SPECIALTIES (07120)
- 7 CAST-IN-PLACE CONCRETE, RE: (03300)
- 8 METAL STIFF. PLATE, RE: STRUCTURAL (05120)



**PROJECT DESIGN GROUP, LLC**  
300 LAFAYETTE STREET, SUITE 200  
NEW ORLEANS, LOUISIANA 70130  
(504) 523-6472 FAX (504) 529-1181

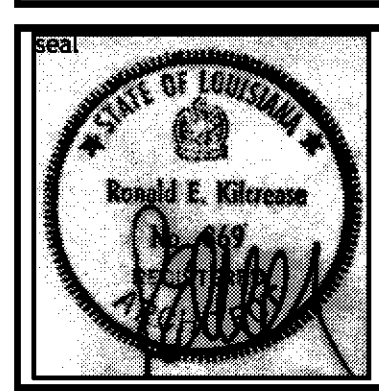


**REK ARCHITECTS, LLC**  
21489 KOOP DRIVE, SUITE 5  
MANDEVILLE, LOUISIANA 70471  
(985) 875-7534 FAX (985) 875-7837

revisions		
no.	revision	date

**SLIDELL MUNICIPAL CENTER  
BUILDING 2**  
SLIDELL, LA

STAIR # 1 - PLANS AND SECTION



file name	drawing number
project number 51093.02	<b>A7</b>
date 9-5-09	
phase CD	