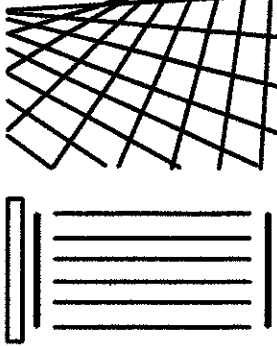


John E. Campo, Architect  
105 Ducaquet Dr.  
Destrehan, LA 70047  
(985) 764-8959

**Campo Design**  
ARCHITECTS

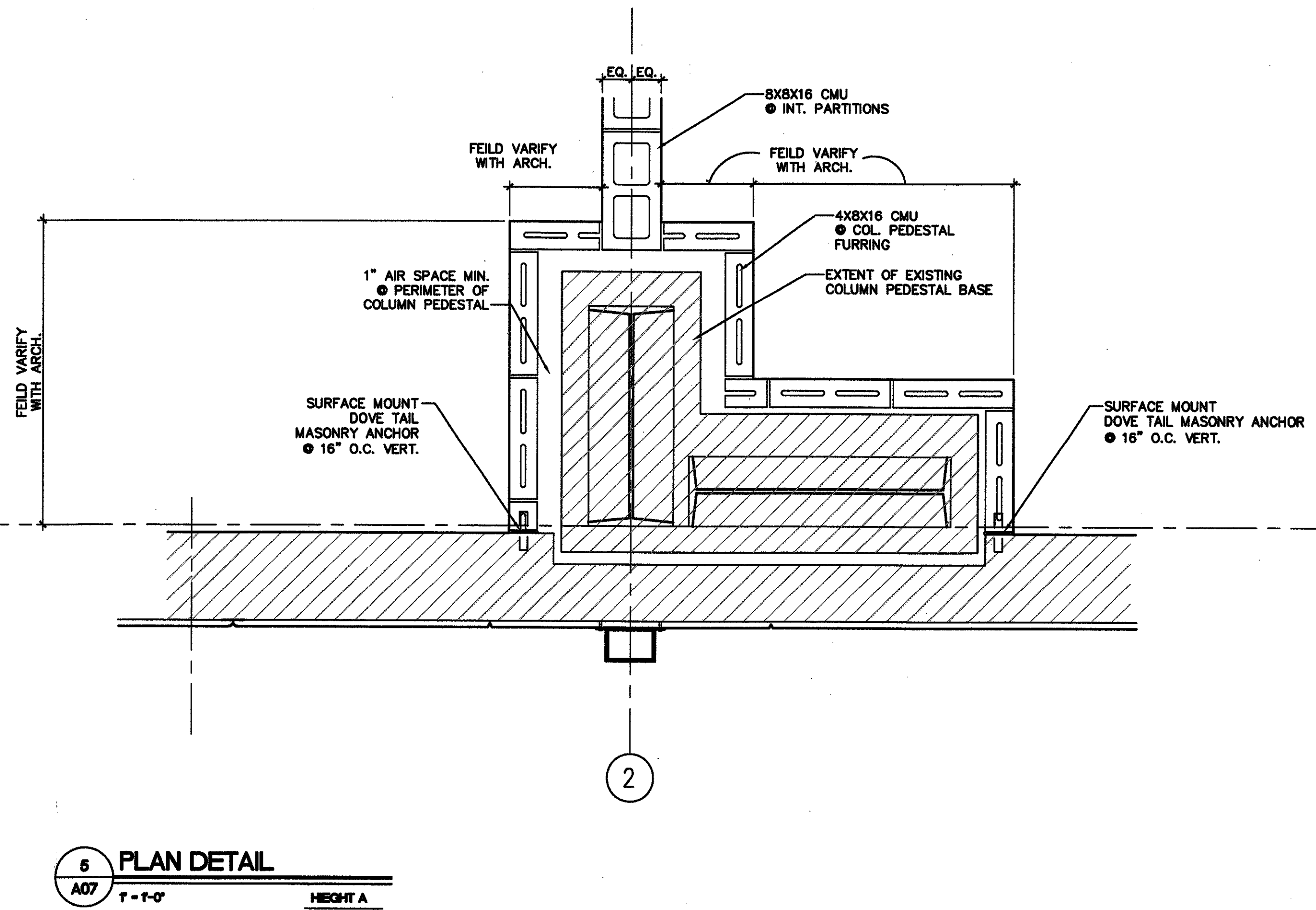
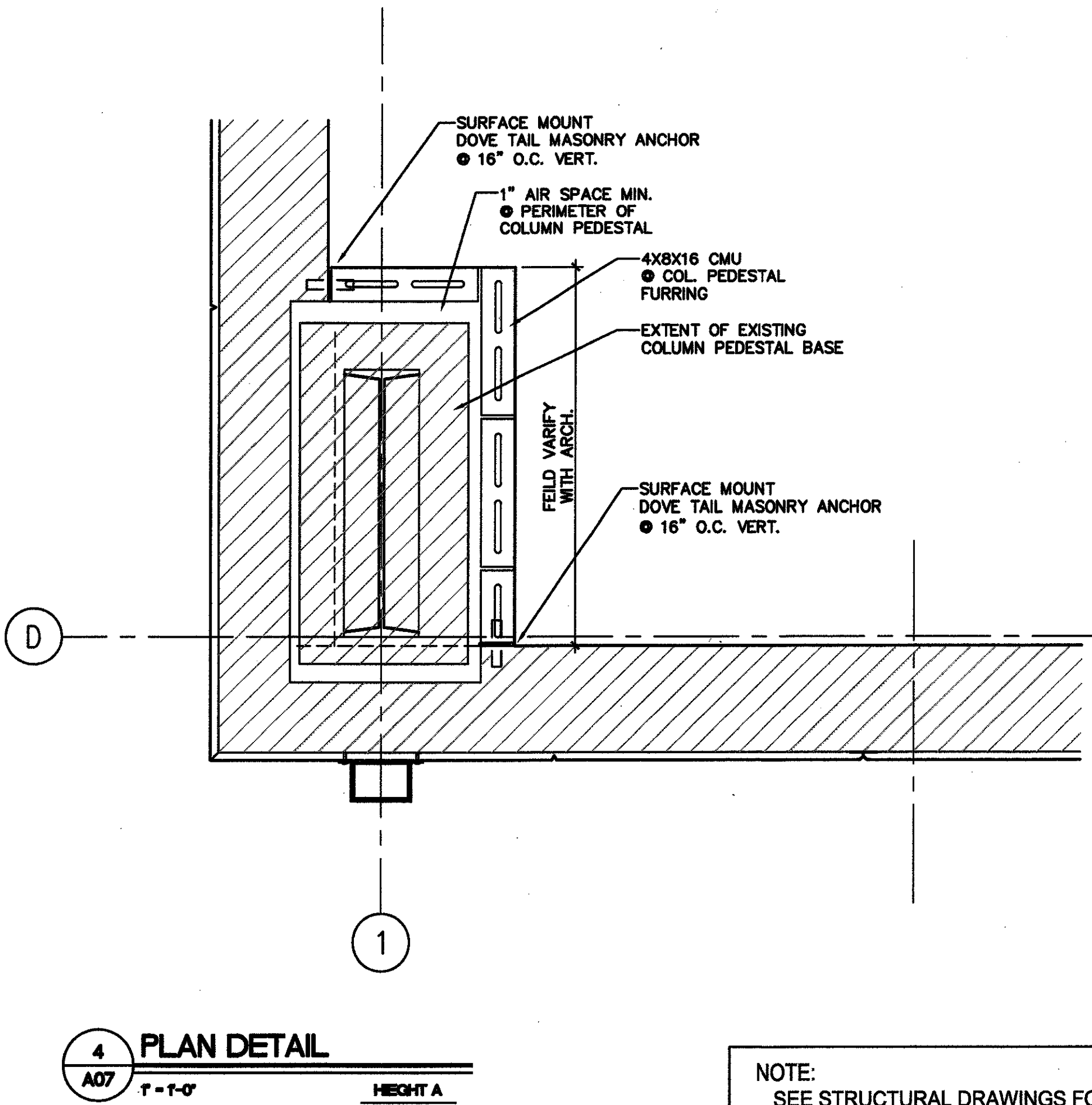
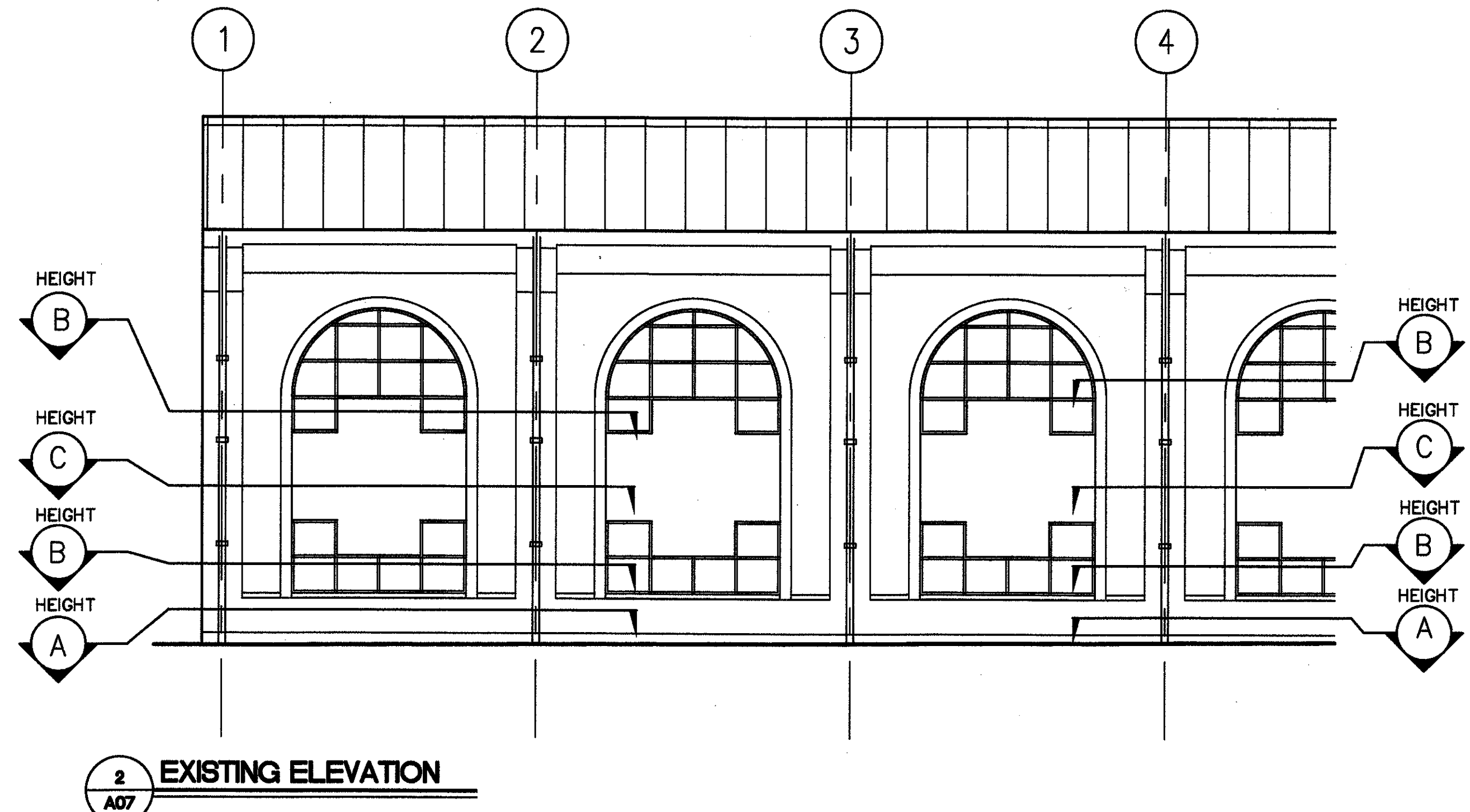
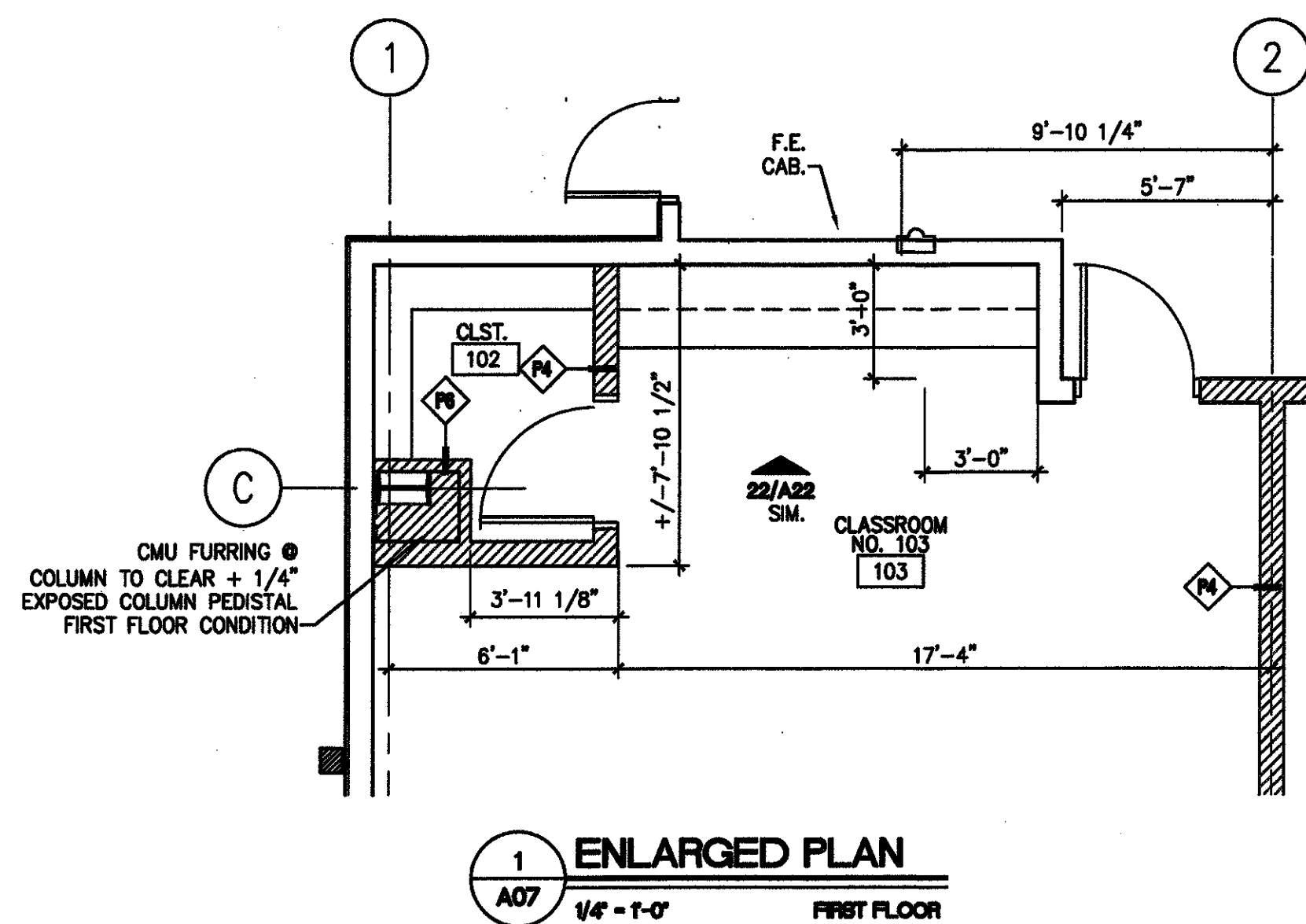


MSGR. JOHN N. PHUC  
EDUCATION CENTER - FINAL PHASE  
13396 RIVER ROAD, DESTREHAN, LOUISIANA  
ST. CHARLES BORROMEO CATHOLIC CHURCH PARISH

**A07**

SHEET 8 OF 29

DATE:  
SEPT. 11, 2009  
CD - 1705



NOTE:  
SEE STRUCTURAL DRAWINGS FOR CMU  
CELL SOLID FILL REQUIREMENTS, &  
VERTICAL & HORIZONTAL REINFORCEMENT  
REQUIREMENTS.