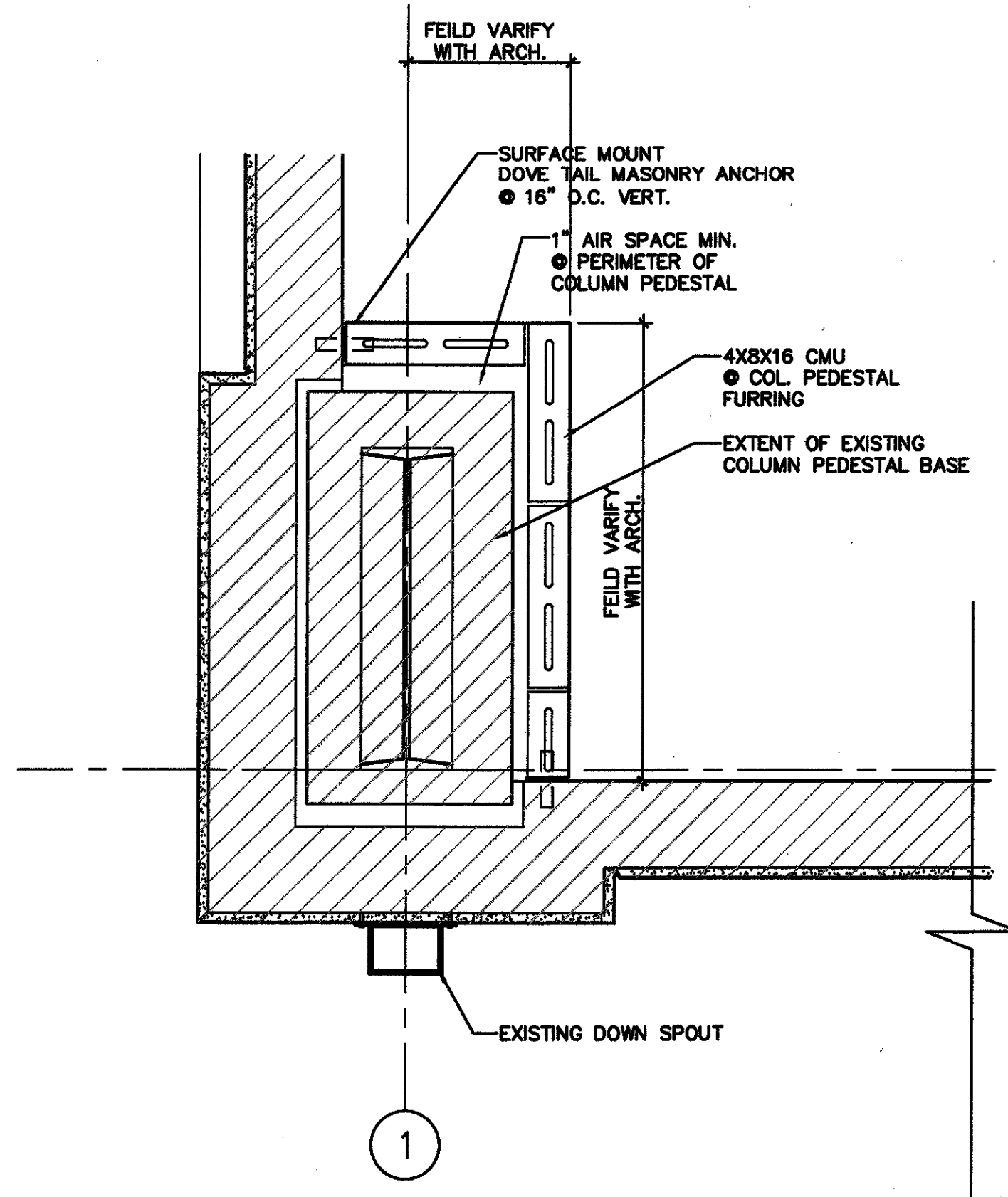




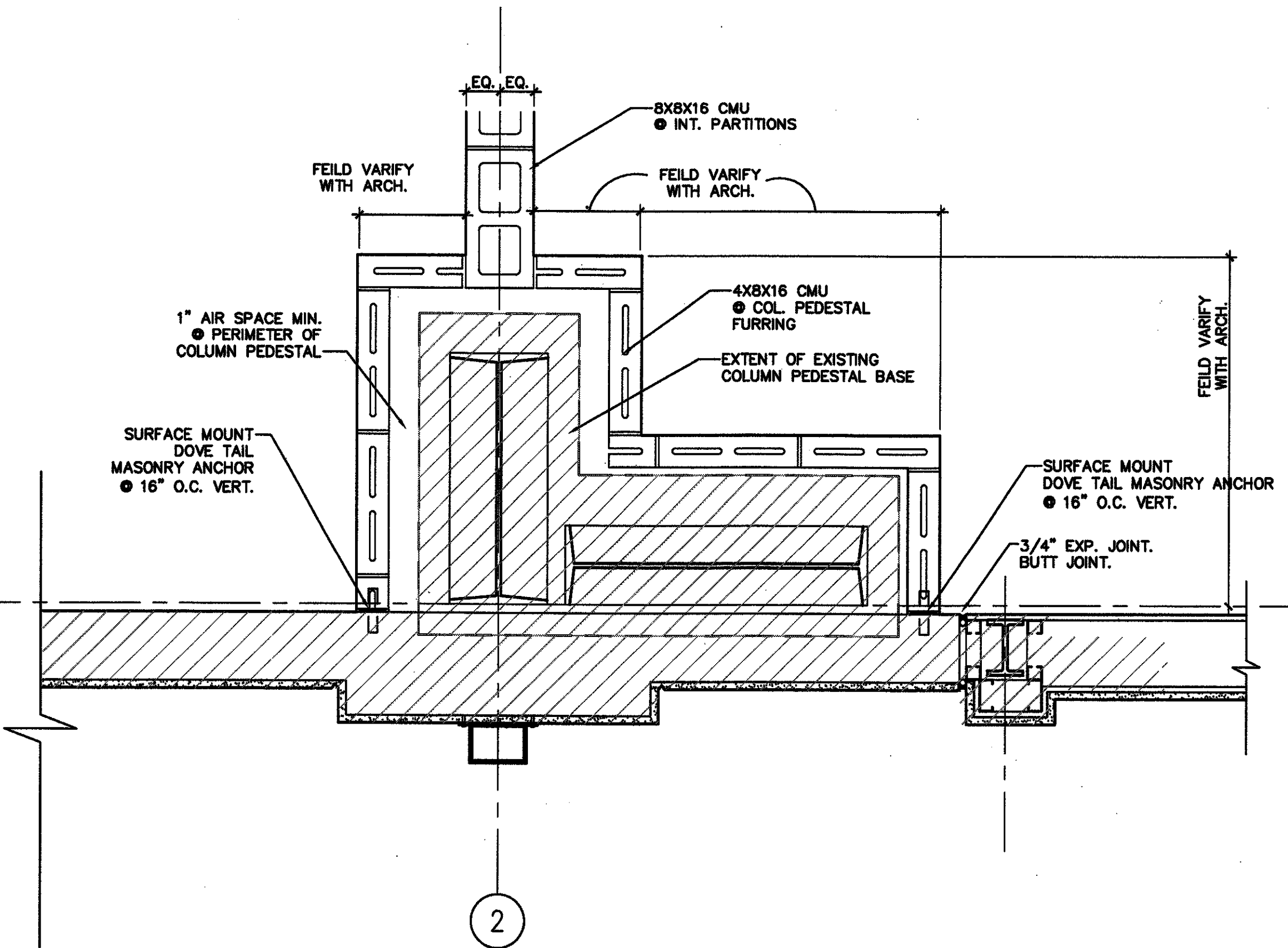
John E. Campo, Architect
 105 Ducaud Dr.
 Destrehan, LA 70047
 (985) 764-8959

Campo Design
 ARCHITECTS

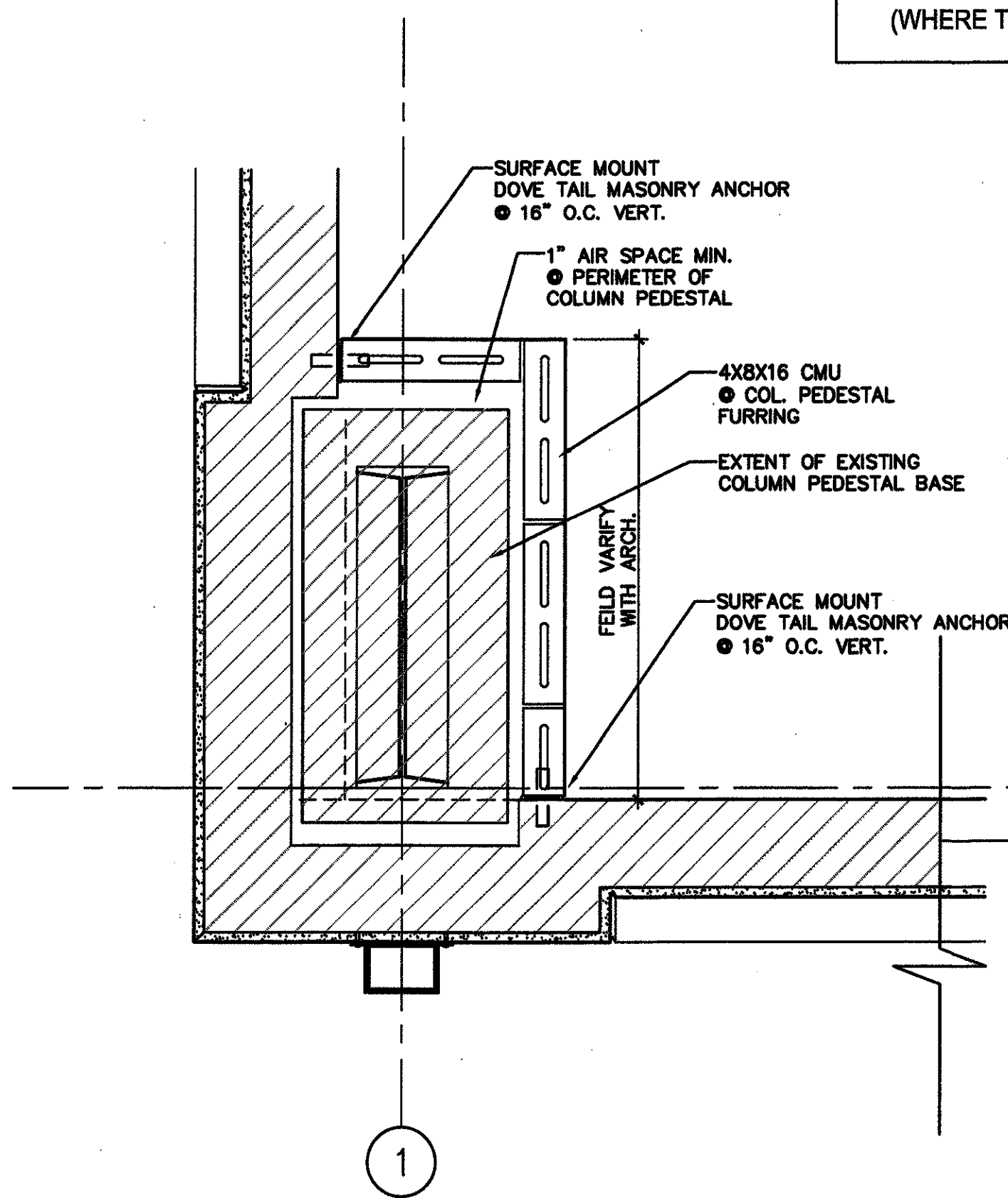


1 PLAN DETAIL
 A08 1'-1'0" HEIGHT C

NOTE:
 DIFFERENT CONDITIONS EXIST AT
 DIFFERENT ELEVATIONS FOR EACH OF
 THE IDENTIFIED PLAN DETAILS. SEE 2/A07
 FOR PLAN DETAIL HEIGHT KEY.
 (WHERE THE SECTION IS CUT.)

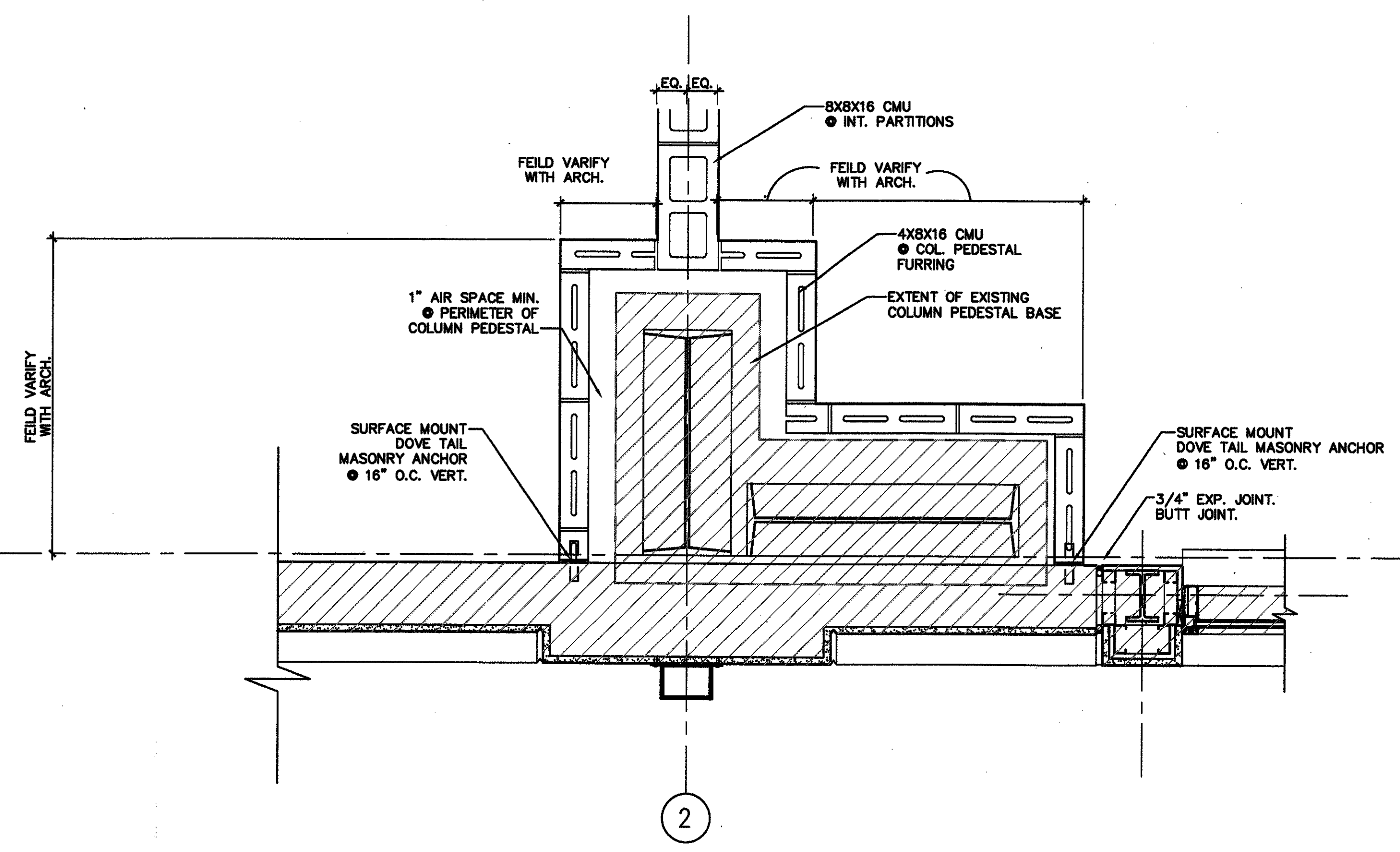


2 PLAN DETAIL
 A08 1'-1'0" HEIGHT C

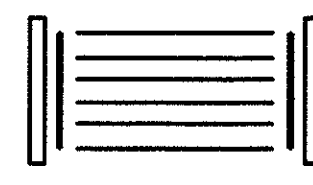


3 PLAN DETAIL
 A08 1'-1'0" HEIGHT B

NOTE:
 SEE STRUCTURAL DRAWINGS FOR CMU
 CELL SOLID FILL REQUIREMENTS, &
 VERTICAL & HORIZONTAL REINFORCEMENT
 REQUIREMENTS.



4 PLAN DETAIL
 A08 1'-1'0" HEIGHT B



MSGR. JOHN N. PHUC
 EDUCATION CENTER - FINAL PHASE
 13396 RIVER ROAD, DESTREHAN, LOUISIANA
 ST. CHARLES BORROMEO CATHOLIC CHURCH PARISH

A08

SHEET 9 OF 29

DATE:
 SEPT. 11, 2009
 CD - 1705