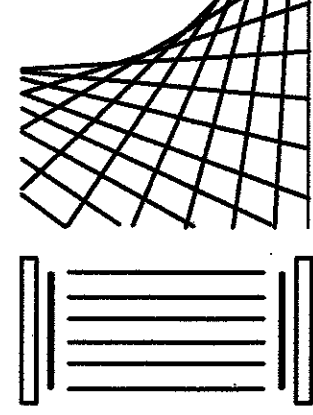




John E. Campo, Architect
 105 Ducaquet Dr.
 Destrehan, LA 70047
 (985) 764-8959

Campo Design
 ARCHITECTS

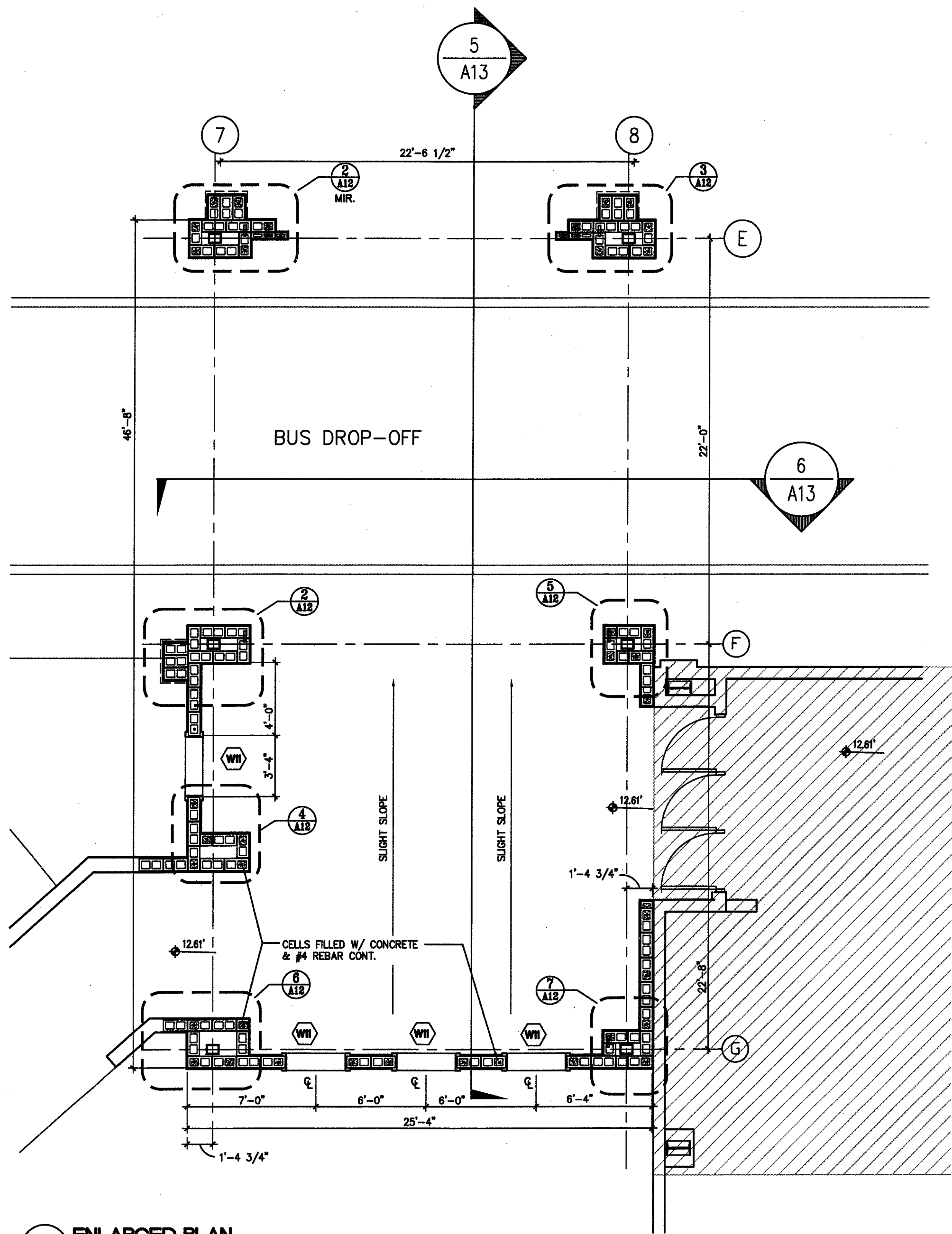


MSGR. JOHN N. PHUC
 EDUCATION CENTER - FINAL PHASE
 13396 RIVER ROAD, DESTREHAN, LOUISIANA
 ST. CHARLES BORROMEO CATHOLIC CHURCH PARISH

A12

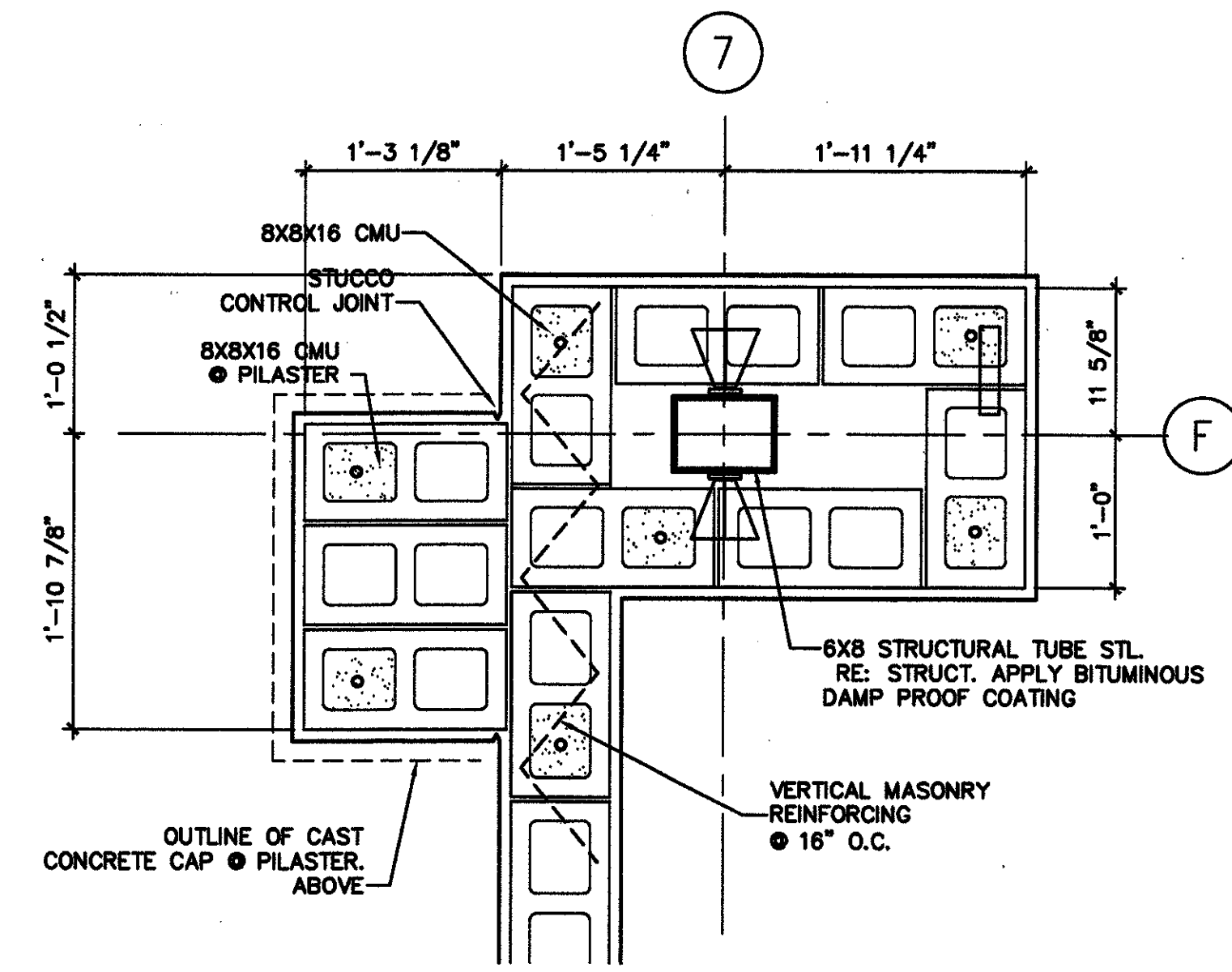
SHEET 13 OF 29

DATE:
 SEPT. 11, 2009
 CD - 1705

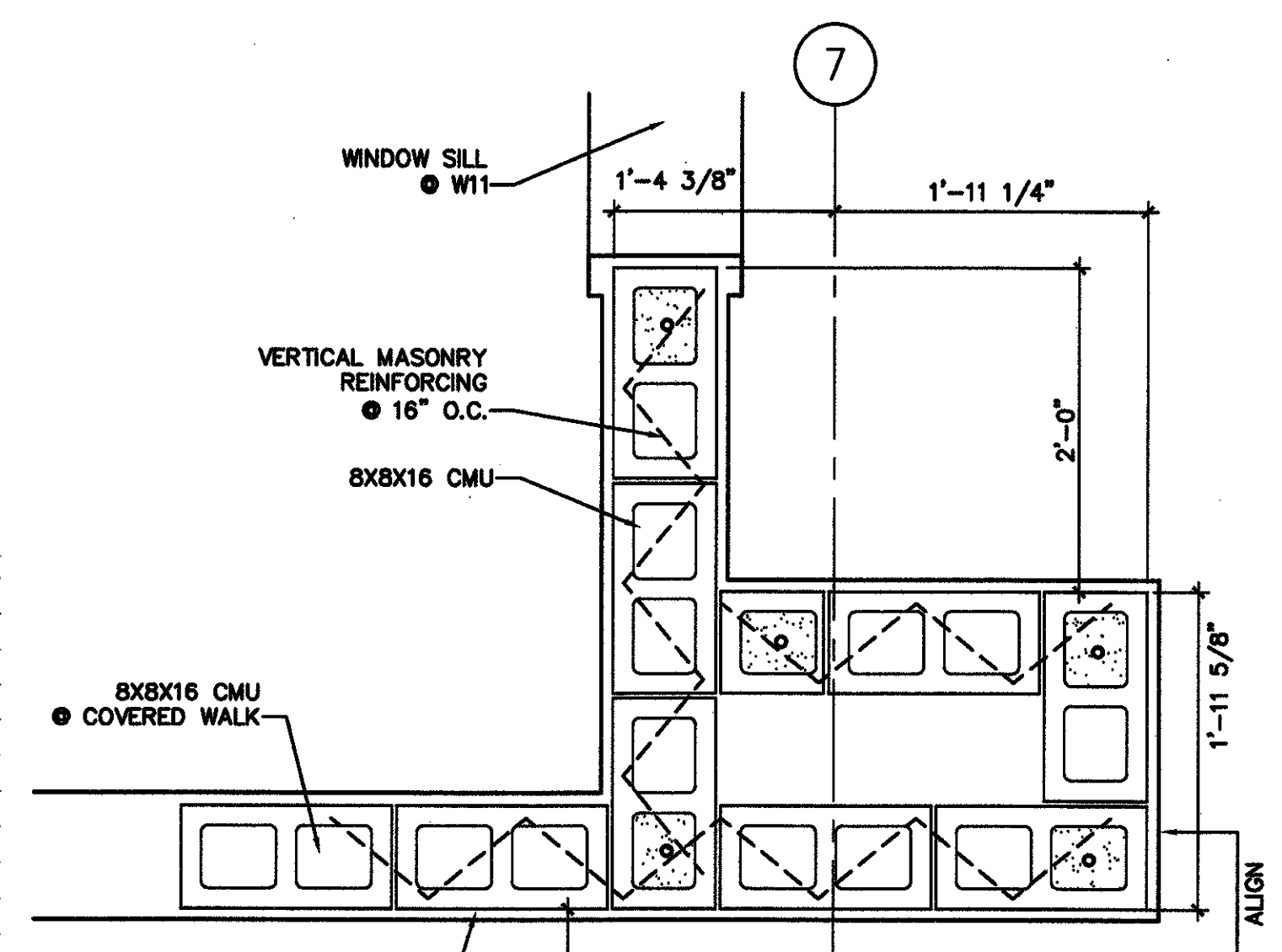


1 ENLARGED PLAN
 A12 1/4" = 1'-0"

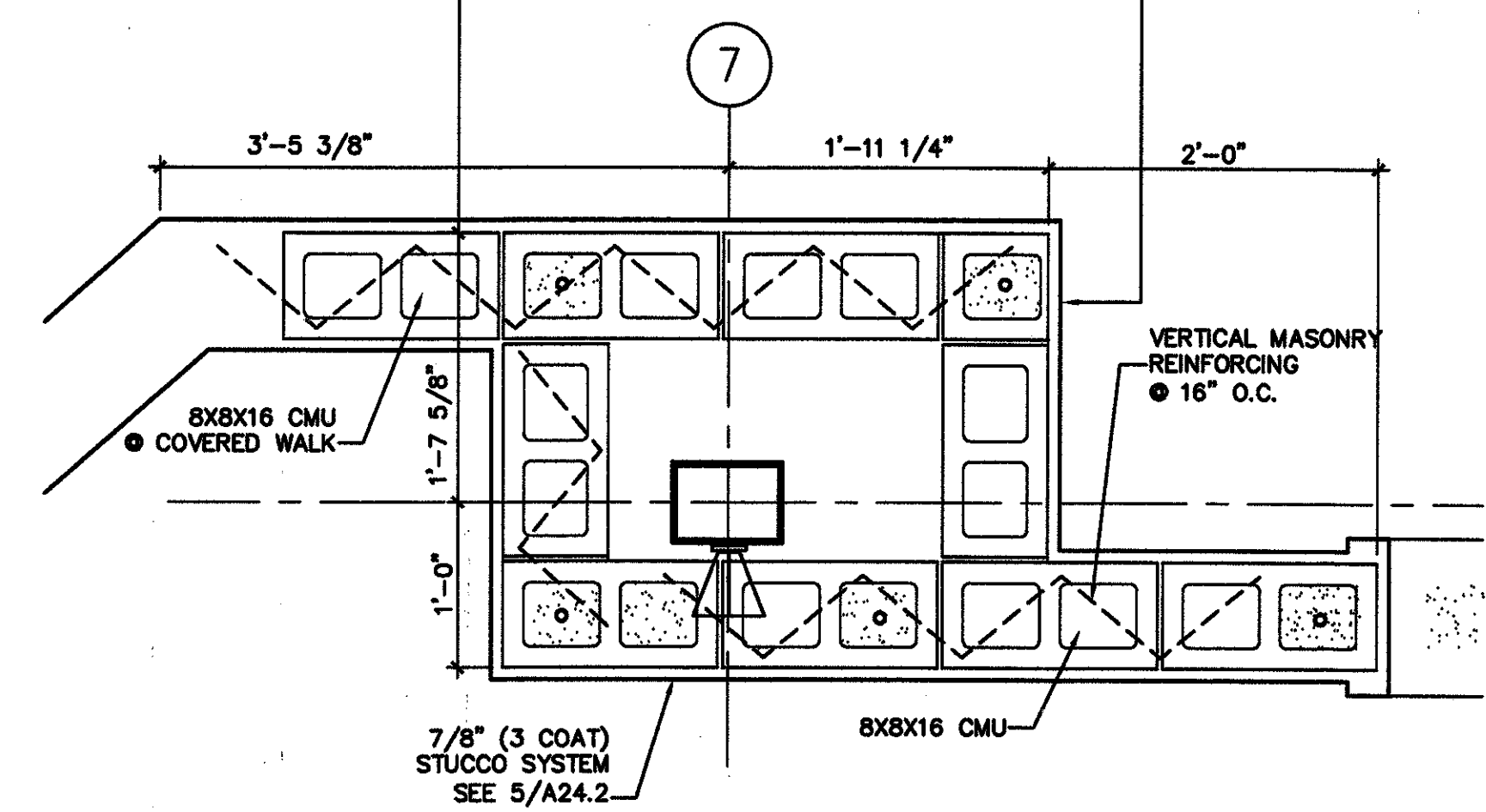
ALTERNATE NO. 1
 ALTERNATE NO.1 ADD CANOPY AND WALKWAY (ALL STRUCTURE ABOVE CONC. FOUNDATION) AS SHOWN ON SHEET A08. REFERENCE STRUCTURAL DRAWINGS FOR FOUNDATION DETAILS WHICH ARE PART OF THE BASE BID.



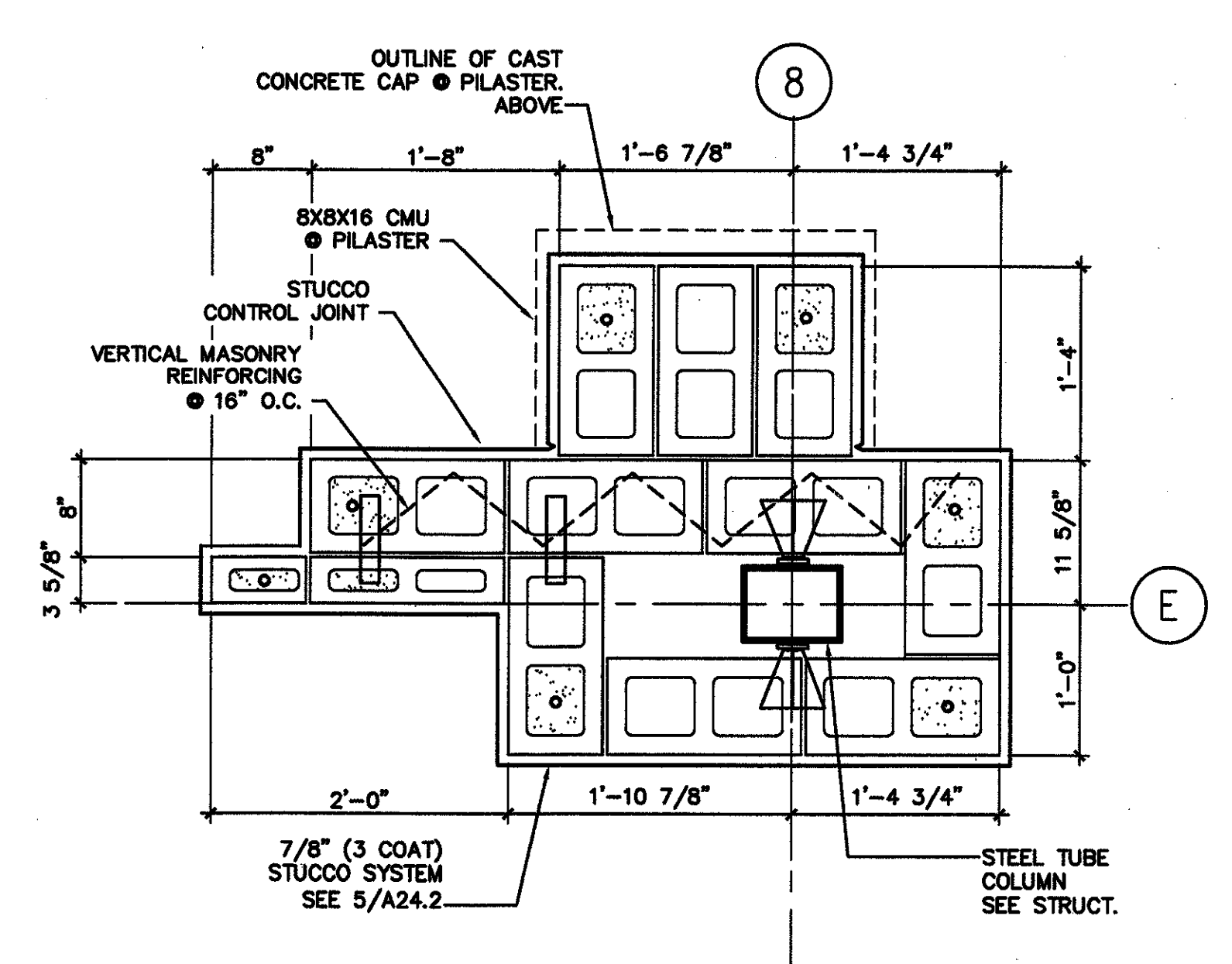
2 PLAN DETAIL
 A12 1" = 1'-0"



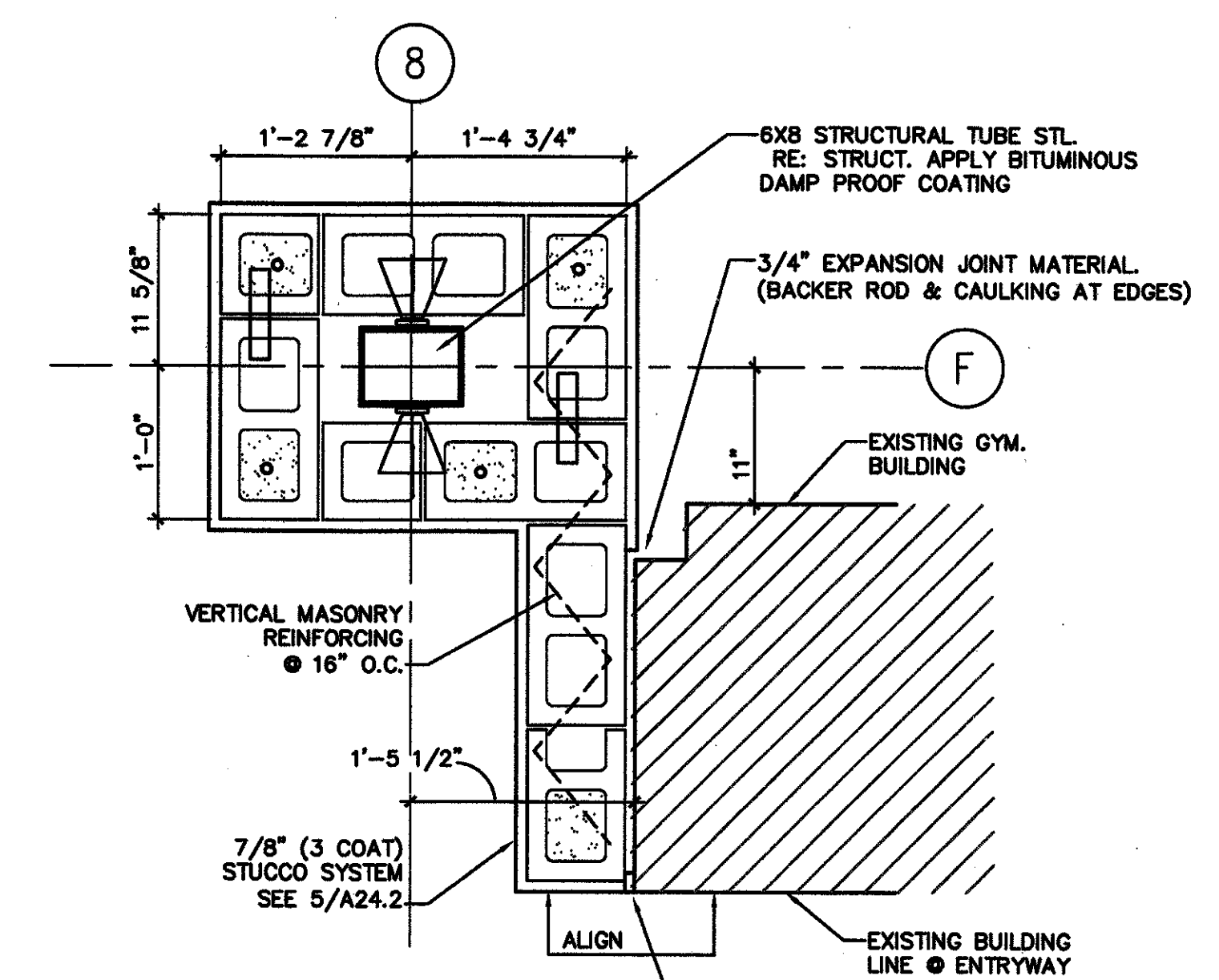
4 PLAN DETAIL
 A12 1" = 1'-0"



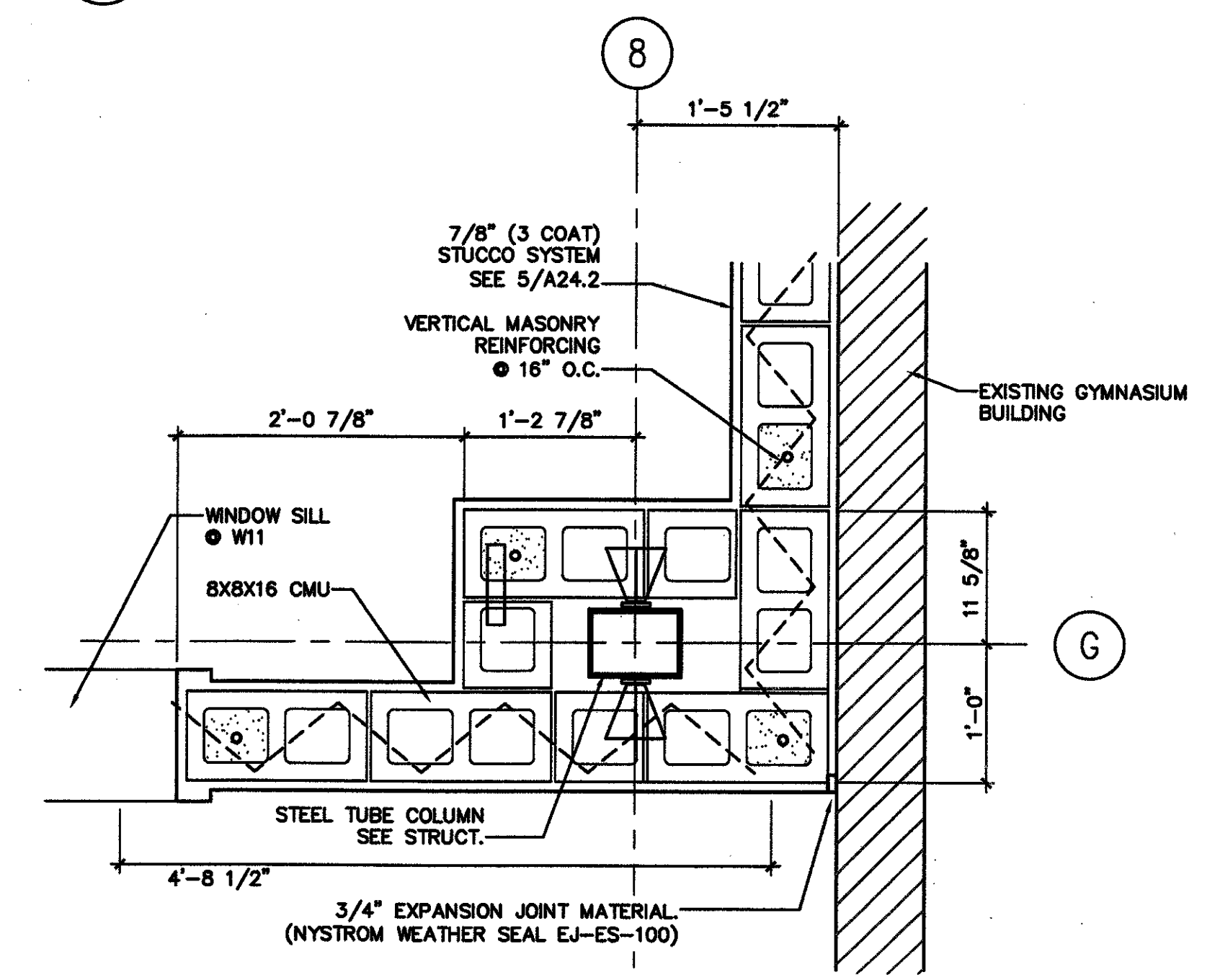
6 PLAN DETAIL
 A12 1" = 1'-0"



3 PLAN DETAIL
 A12 1" = 1'-0"



5 PLAN DETAIL
 A12 1" = 1'-0"



7 PLAN DETAIL
 A12 1" = 1'-0"