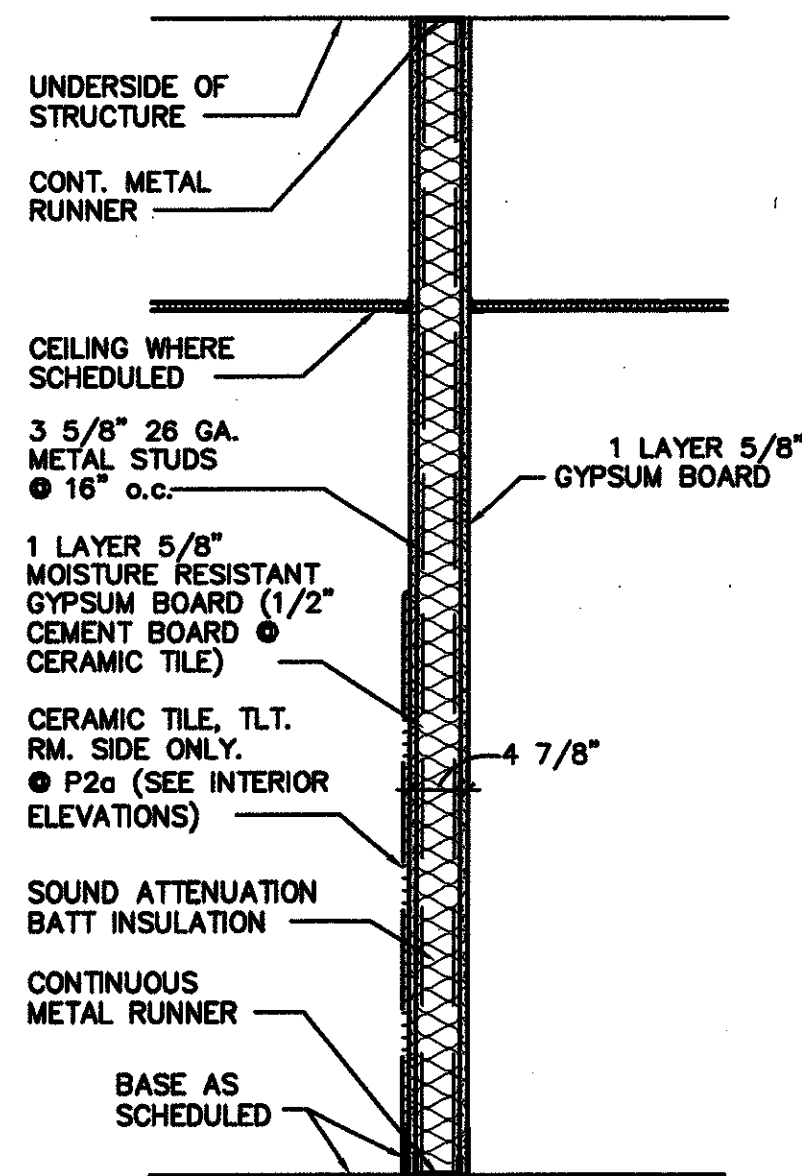
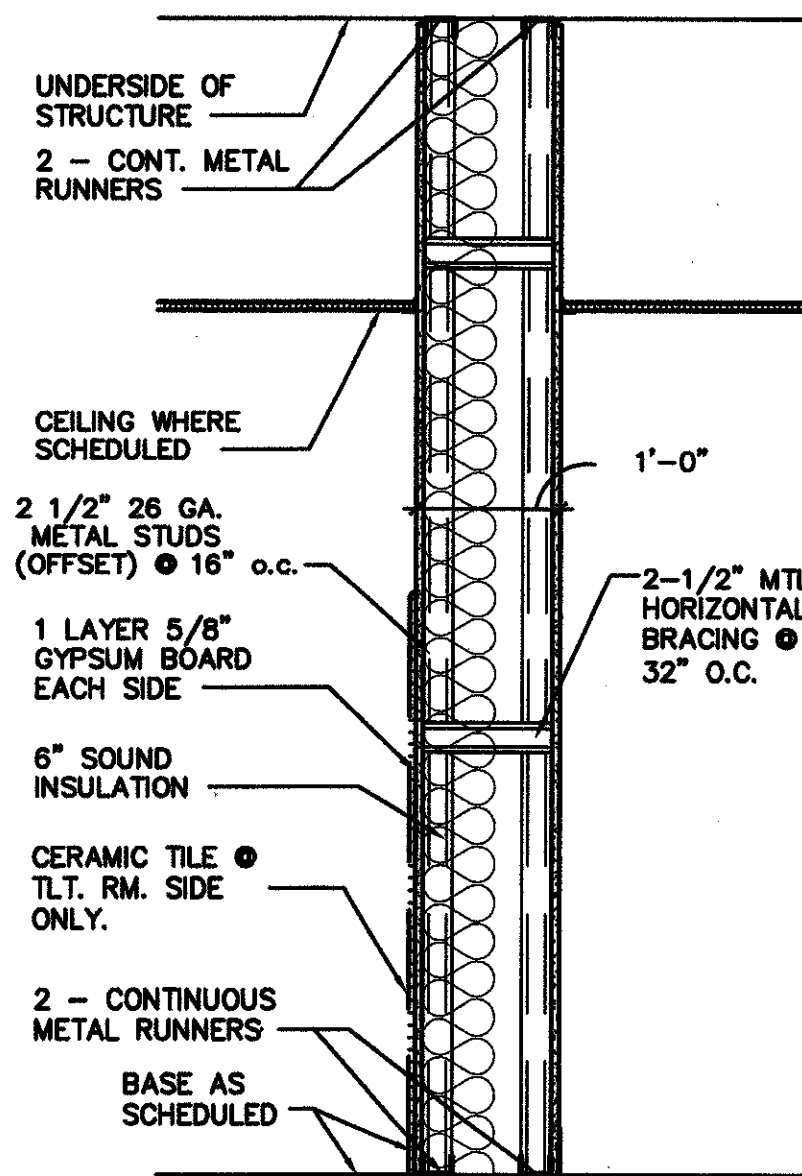


P1

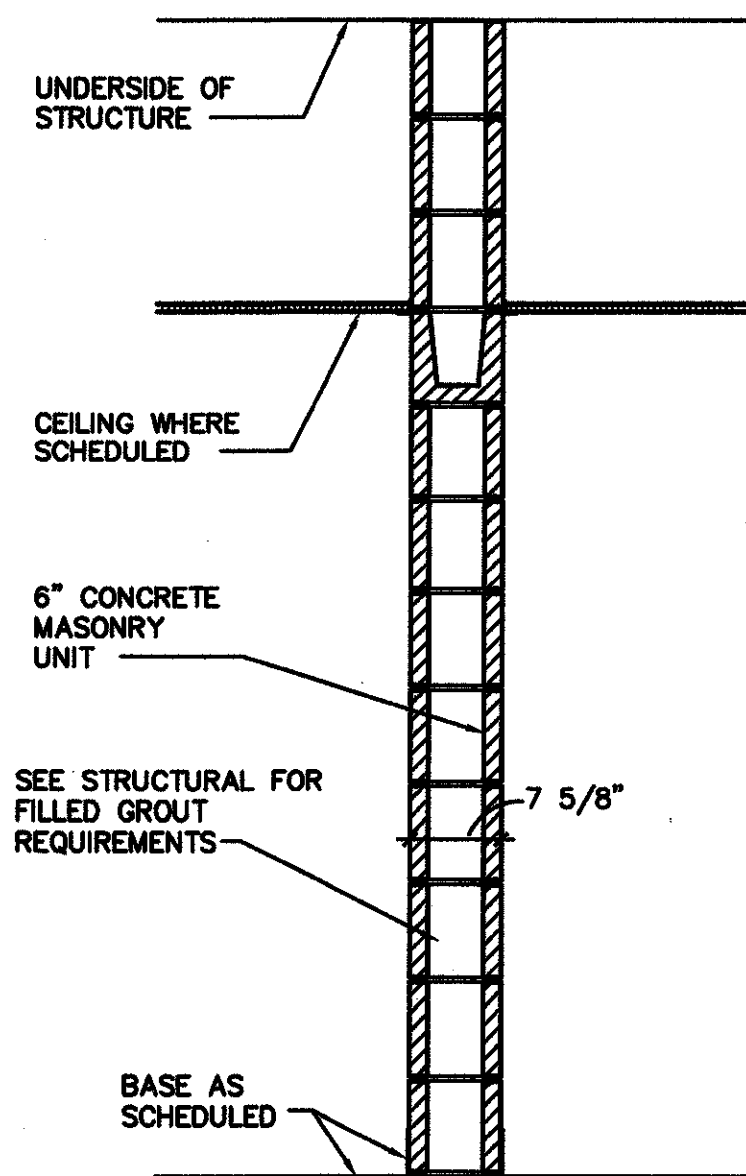


P2
P2a

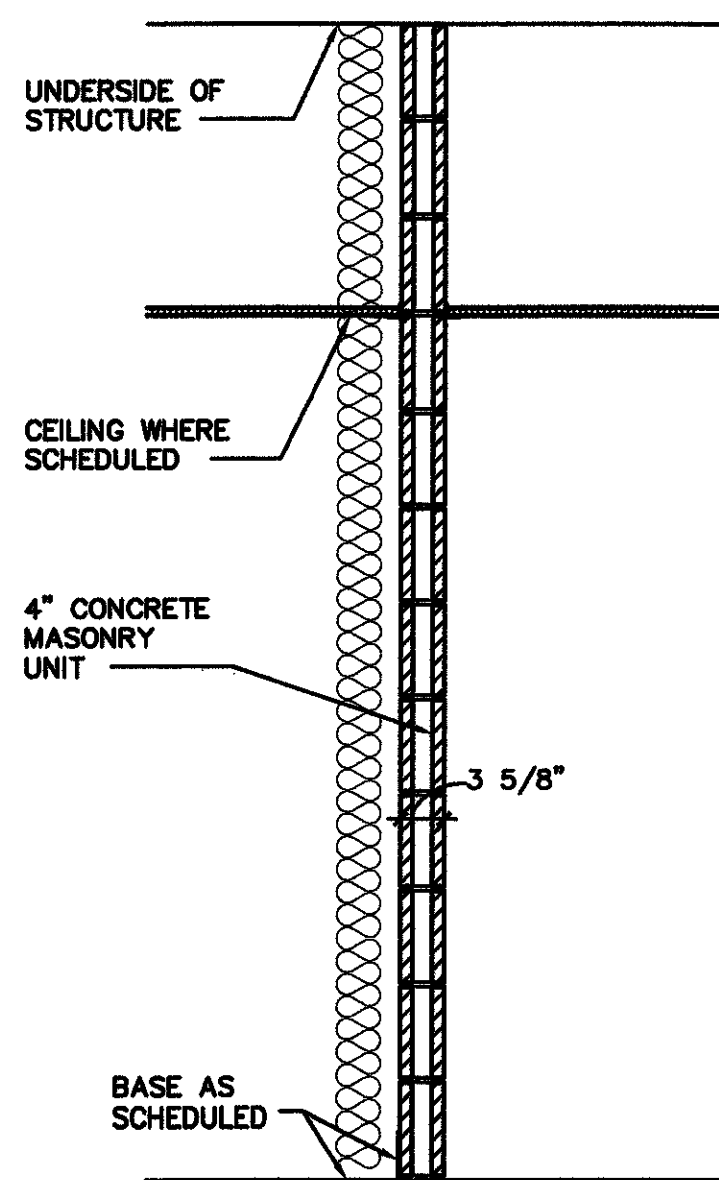
NOT RATED
ADD CERAMIC TILE.
SEE INT. ELEVATIONS
SHEET A23



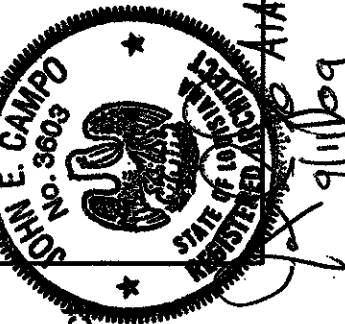
P3



P4

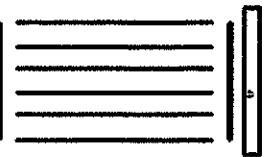


P6



John E. Campo, Architect
105 Ducalet Dr.
Destrehan, LA 70047
(985) 764-8989

Campo Design
ARCHITECTS



MSGR. JOHN N. PHUC
EDUCATION CENTER - FINAL PHASE
13396 RIVER ROAD, DESTREHAN, LOUISIANA
ST. CHARLES BORROMEO CATHOLIC CHURCH PARISH

A25

SHEET 26 OF 29

DATE:
SEPT. 11, 2009
CD - 1705