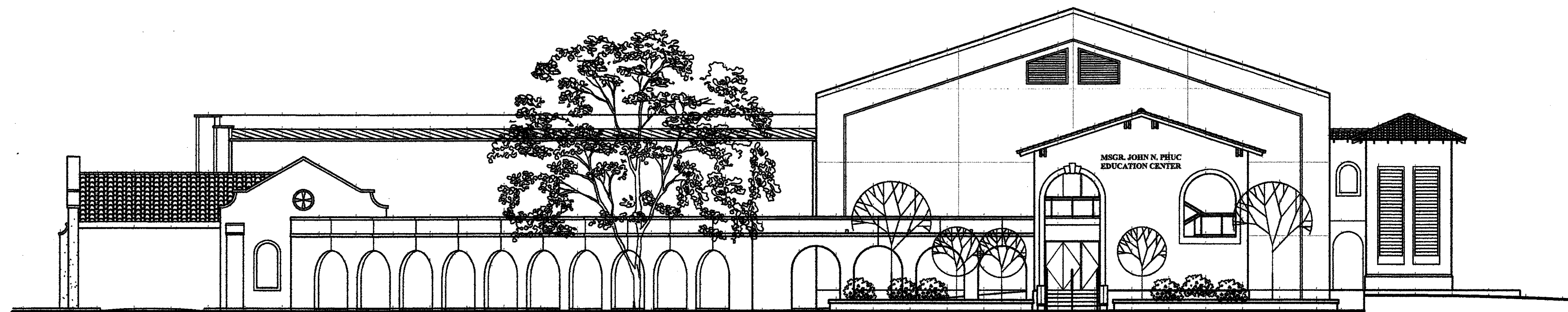


# MSGR. JOHN N. PHUC EDUCATION CENTER - FINAL PHASE -

13396 RIVER ROAD, DESTREHAN, LOUISIANA  
ST. CHARLES BORROMEO CATHOLIC CHURCH PARISH

MSGR. HARRY J. BUGLER, PASTOR  
DR. DONALYN HASSENBOEHLER, PRINCIPAL  
RONALD C. RODRIGUE, ADMINISTRATIVE ASSISTANT



**CAMPO DESIGNS - ARCHITECTS**

JOHN E. CAMPO, AIA.  
105 DUCAYET DRIVE  
DESTREHAN, LA 70047  
(985) 764-8959

**DANNY J. HERBERT, PE.  
CIVIL & ENVIRONMENTAL CONSULTING**

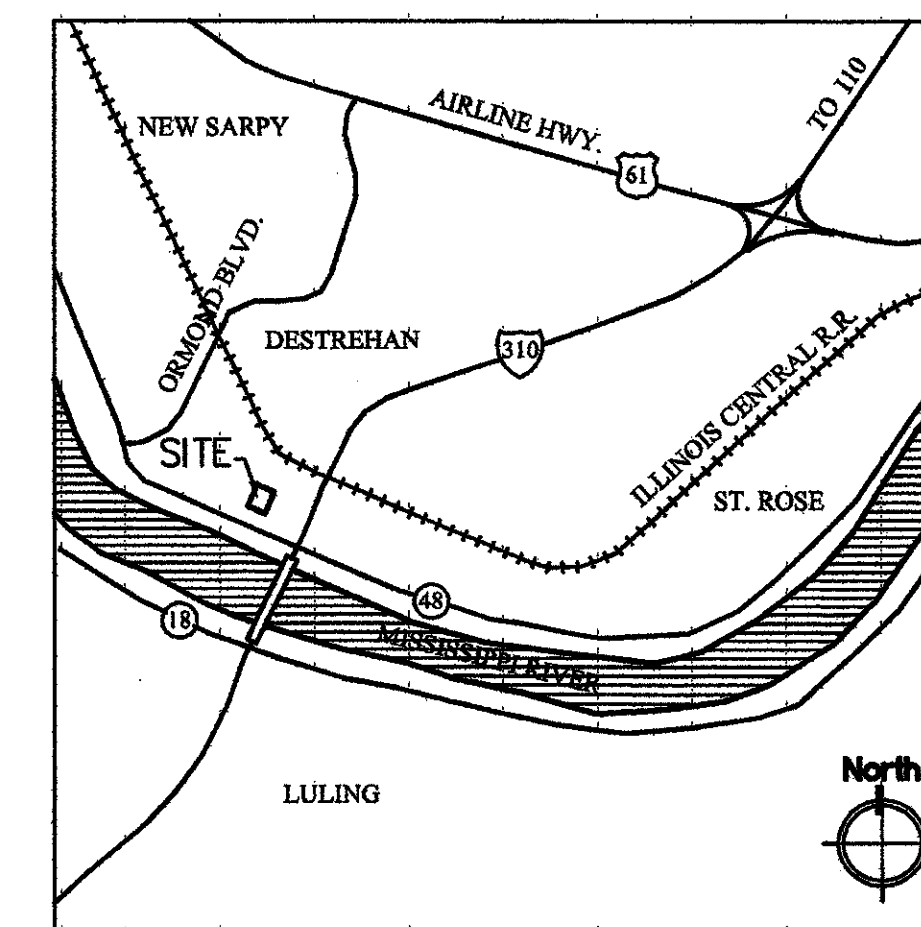
ENGINEERING  
P.O. BOX 1528  
LULING, LA 70070  
(985) 785-2380

**M-K ENGINEERING  
MECHANICAL & ELECTRICAL ENGINEERS**

4323 DIVISION STREET STE. 211  
METAIRIE, LA 70002  
(504) 887-2376

**BADEAUX & ASSOCIATES  
STRUCTURAL ENGINEERS**

P.O. BOX 1056  
THIBODAUX, LA 70303  
(985) 447-2317



VICINITY MAP

NOT TO SCALE

SHEET INDEX

T01	TITLE SHEET CIVIL
C00	SURVEY
C01	EXISTING SITE PLAN - PARKING LOT
C02	DEMOLITION PLAN - PARKING LOT
C03	DRAINAGE PLAN
C03A	PARKING LOT PLAN
C04	CONTROL JOINTS & DETAILS
C05	GENERAL NOTED & MISC. DETAILS
C06	GENERAL NOTED & MISC. DETAILS
ARCHITECTURAL	
A00	CAMPUS PLAN
A01	SITE PLAN
A02	FIRST FLOOR PLAN
A03	SECOND FLOOR PLAN (ADD ALTERNATE NO.3)
A04	MECHANICAL MEZZANINE PLAN (INFORMATIONAL)
A05	MEZZANINE DETAILS (INFORMATIONAL)
A06	ENLARGED PLANS
A07	ENLARGED PLANS & PLAN DETAILS
A08	PLAN DETAILS
A09	PLAN DETAILS
A10	EXTERIOR ENLARGED PLANS
A11	PARTIAL PLANS - BUS DROP OFF
A12	BUS DROP OFF PLAN & DETAILS
A13	BUS DROP OFF SECTIONS & ELEVATIONS
A14	EXTERIOR ELEVATIONS
A15	BUILDING SECTION (INFORMATIONAL)
A16	EXISTING WALL SECTIONS (INFORMATIONAL)
A17	ENLARGED SECTION DETAILS (INFORMATIONAL)
A18	VERTICAL CIRCULATION - ELEVATOR
A19	(NOT USED)
A20	FIRST FLOOR R.C.P.
A21	FIRST FLOOR FINISH PLAN
A22	INTERIOR ELEVATIONS
A23	INTERIOR DETAILS
A24	INTERIOR DETAILS
A25	PARTITION TYPES
A26	SCHEDULES & DETAILS
A27	OPENING DETAILS
A28	SCHOOL SIGN, DETAILS
STRUCTURAL	
S1	BUS DROP-OFF FRAMING
PLUMBING	
P101	FIRST FLOOR PLUMBING PLAN
P102	SECOND FLOOR PLUMBING PLAN (ADD ALT. NO.3)
P103	MEZZANINE FLOOR PLAN
P104	SCHEDULES & DETAILS
MECHANICAL	
M101	FIRST FLOOR PLAN - HVAC
M102	SECOND FLOOR PLAN - HVAC (ADD ALT. NO. 3)
M103	MEZZANINE PLAN - HVAC
M104	SCHEDULES
M105	DETAILS
M106	NOTES
ELECTRICAL	
E101	SITE PLAN
E102	FIRST FLOOR PLAN - LIGHTING
E103	SECOND FLOOR PLAN - LIGHTING (ADD ALT. NO. 3)
E104	FIRST FLOOR PLAN - POWER
E105	SECOND FLOOR PLAN - POWER
E106	ATTIC FLOOR PLAN - POWER
E107	SYMBOLS, DETAILS - ELECTRICAL
E108	PANEL SCHEDULE



9/11/09

John E. Campo, Architect  
105 Ducayet Dr.  
Destrehan, LA 70047  
(985) 764-8959

**Campos Designs**  
ARCHITECTS

MSGR. JOHN N. PHUC  
EDUCATION CENTER - FINAL PHASE  
13396 RIVER ROAD, DESTREHAN, LOUISIANA  
ST. CHARLES BORROMEO CATHOLIC CHURCH PARISH

**T01**

SHEET 1 OF 1

DATE:  
SEPT. 11, 2009  
CD - 1705

SET NO. 11