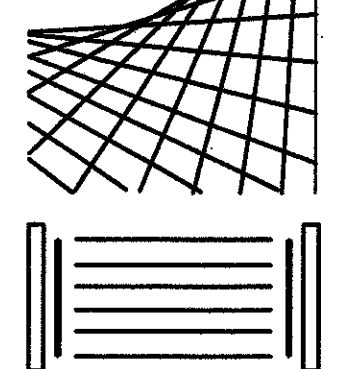




John E. Campo, Architect
 105 Ducauyt Dr.
 Destrehan, LA 70047
 (985) 764-8959

Campo Design
 ARCHITECTS

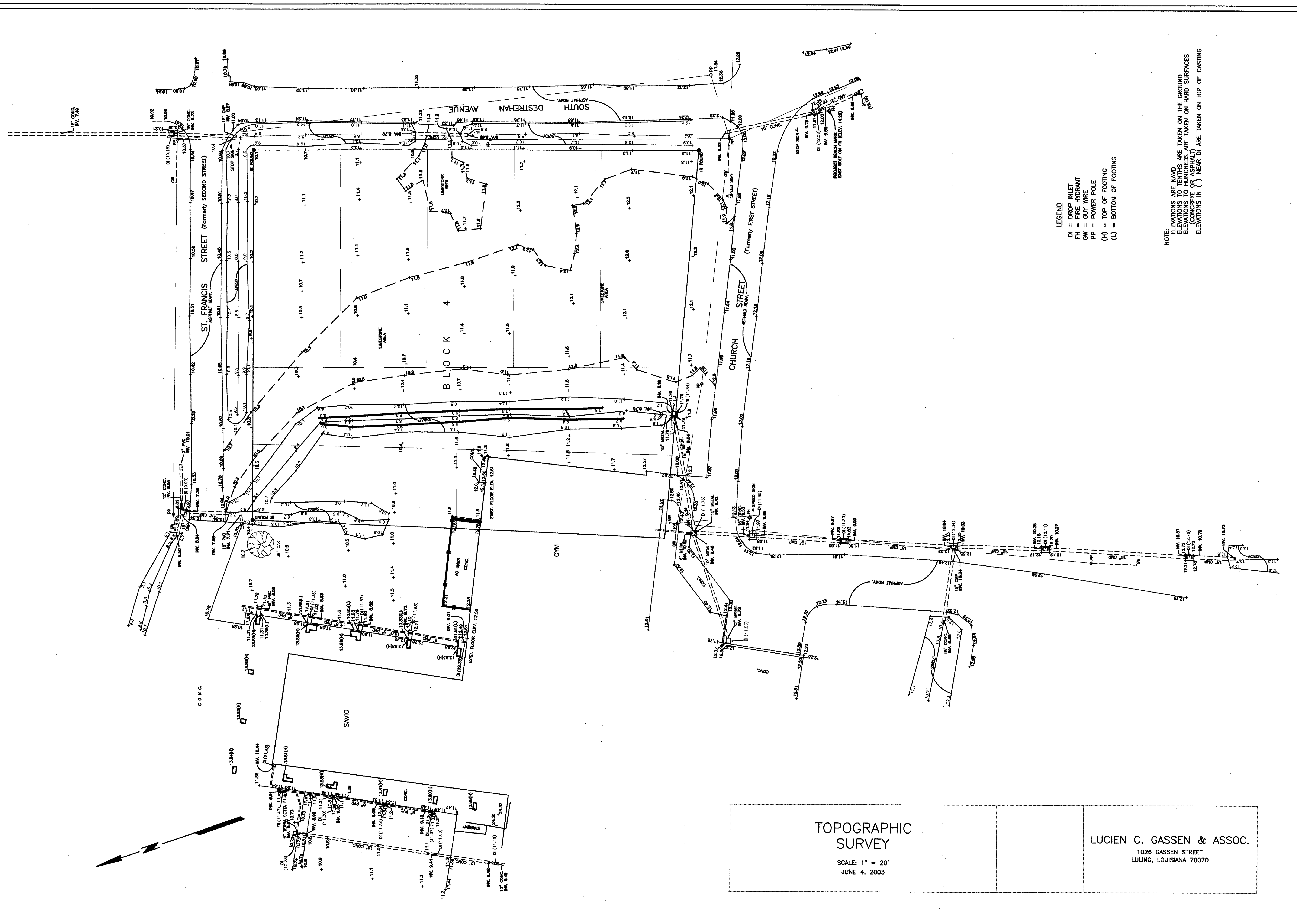


MSGR. JOHN N. PHUC
 EDUCATION CENTER - FINAL PHASE
 13396 RIVER ROAD, DESTREHAN, LOUISIANA
 ST. CHARLES BORROMEO CATHOLIC CHURCH PARISH



1 OF 8

DATE:
 SEPT. 11, 2009
 CD - 1705



LEGEND
 DI = DROP INLET
 FH = FIRE HYDRANT
 GW = GUY WIRE
 PP = POWER POLE
 (H) = TOP OF FOOTING
 (L) = BOTTOM OF FOOTING

NOTE:
 ELEVATIONS ARE NAVD
 ELEVATIONS TO TENTHS ARE TAKEN ON THE GROUND
 ELEVATIONS TO HUNDREDS ARE TAKEN ON HARD SURFACES
 (AS APPLICABLE)
 ELEVATIONS IN () NEAR DI ARE TAKEN ON TOP OF CASTING