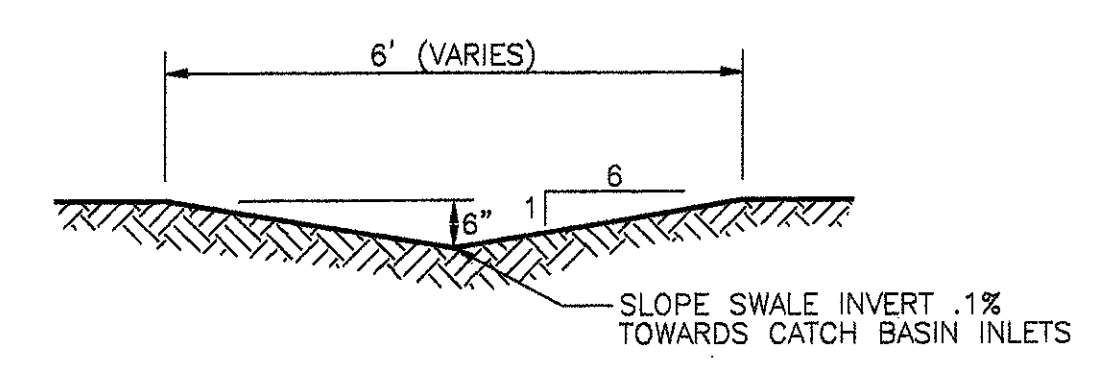
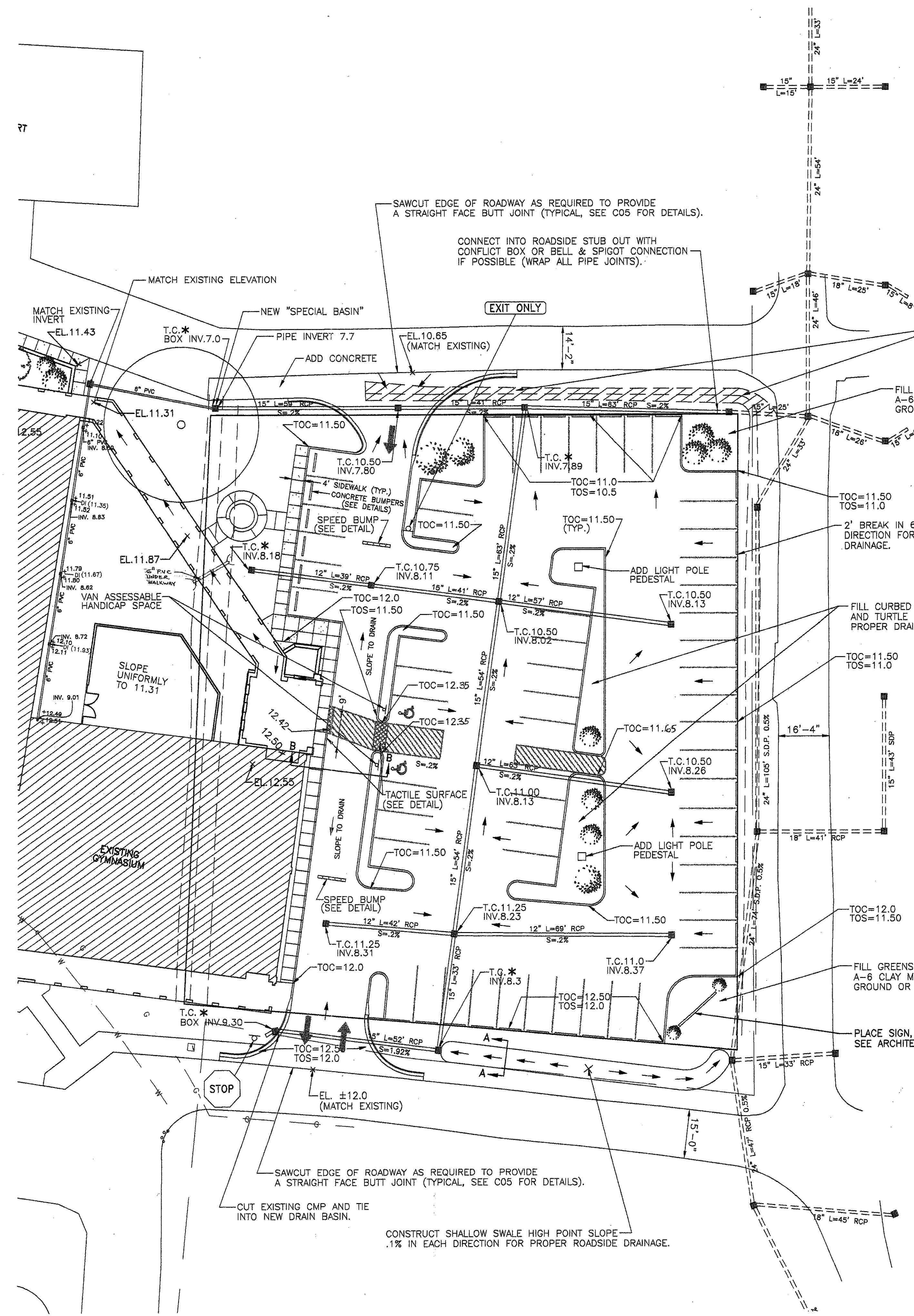
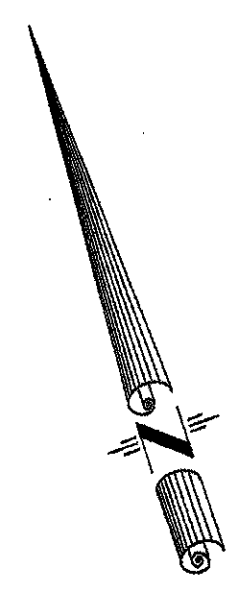
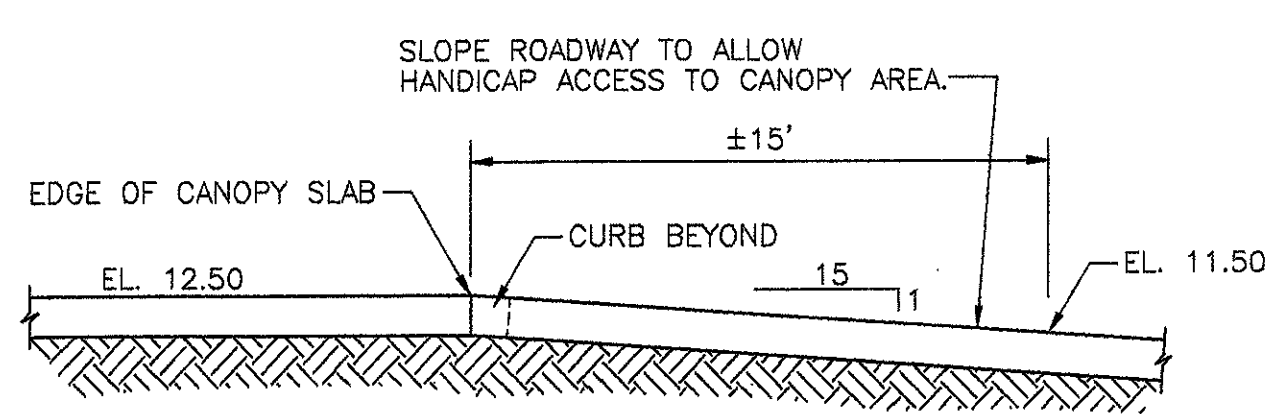


annex-1-hebert\c:\my documents\stcharlesborromeo\c03.dwg Tue Feb 10 19:34:15 2004

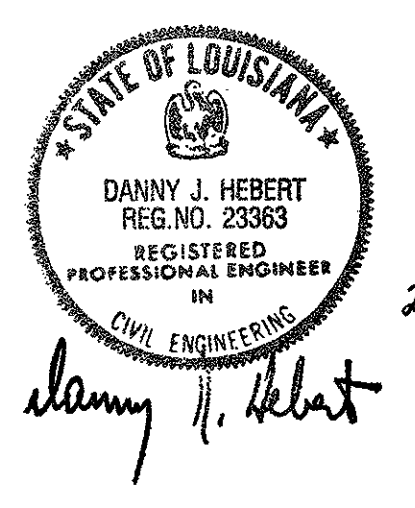


SECTION A-A (TYPICAL)
SCALE: 1" = 2'



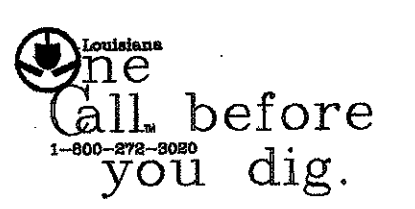
SECTION B-B
SCALE: 1" = 5'

- * ADJUST TOP OF CASTING ELEVATION TO EXISTING GRADE (-4" TO ALLOW FOR POSITIVE DRAINAGE).
- TOC TOP OF CURB
- TOS TOP OF SLAB
- T.C. TOP OF CASTING
- INV. INVERT OF PIPE (CATCH BASIN SHALL BE DEEPENED AS REQUIRED FOR PROPER WALL TO BOTTOM SLAB CLEARANCE).
- DRAINAGE WORK TO BE COMPLETED BY ST. CHARLES PARISH (INCLUDING DITCH ABANDONMENT ALONG SOUTH DESTREHAN AVENUE).



DANNY J. HEBERT, P.E.
 LICENSED CIVIL AND ENVIRONMENTAL ENGINEER
 P.O. BOX 1528 LULING, LOUISIANA 70070
 PHONE: (985) 785-2380 FAX: (985) 785-2388

PROPOSED DRAINAGE PLAN
SCALE: 1" = 20'



Note: "Prior to construction, the contractor will verify all utilities." If a conflict exist, notify the project engineer/architect.

John E. Campo, Architect
105 Ducayet Dr.
Destrehan, LA 70047
(504) 764-8959

Campo Designs
ARCHITECTS

A NEW SCHOOL BUILDING FOR
ST. CHARLES BORROMEO ELEMENTARY SCHOOL
RIVER ROAD, DESTREHAN, LOUISIANA
ST. CHARLES BORROMEO CATHOLIC CHURCH PARISH

C03

3 OF 7 SHEETS
DATE: SEPT. 11, 2009
CD - 1705