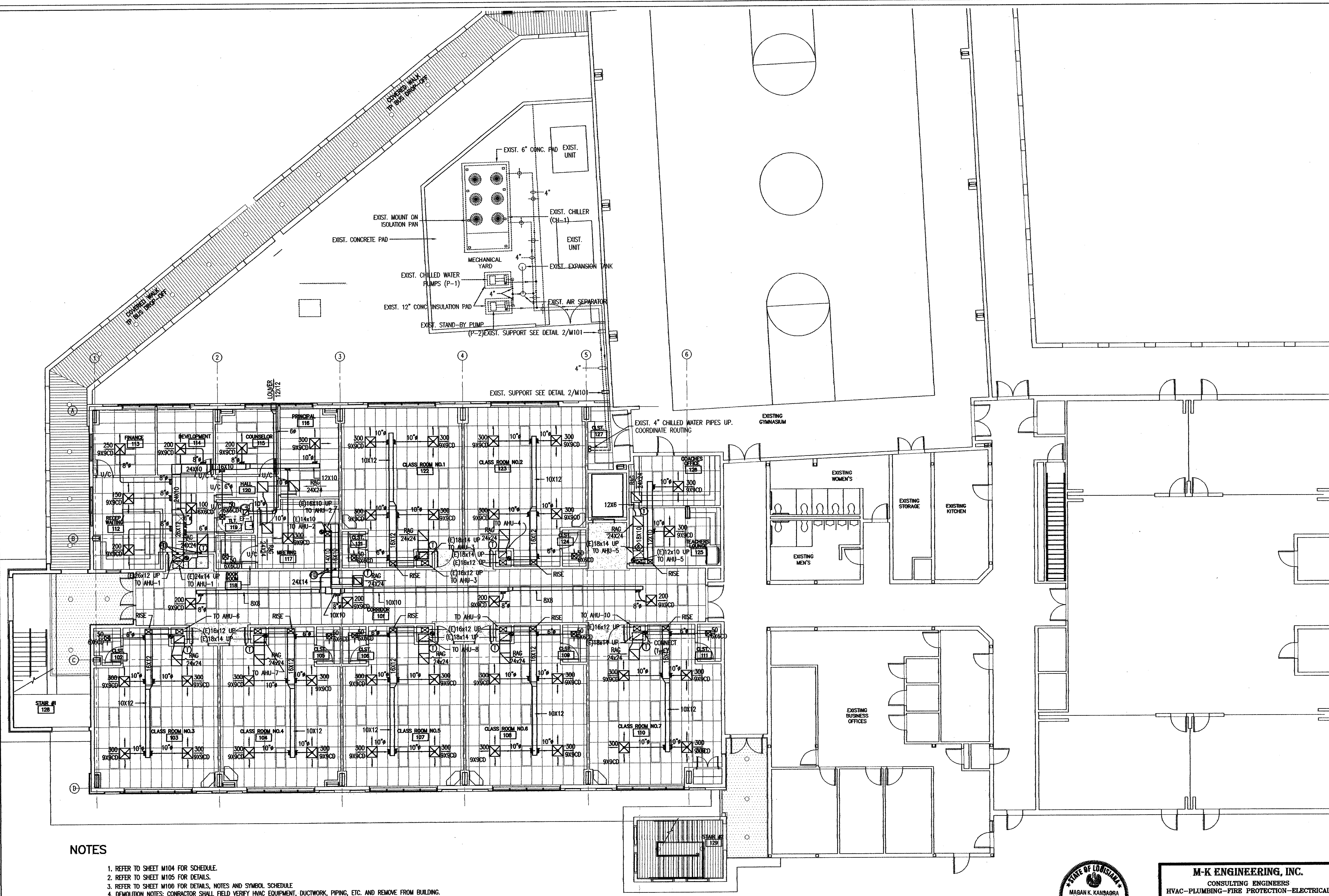


John E. Campo, Architect
 105 Ducayet Dr.
 Destrehan, LA 70047
 (985) 764-8959

Campo Design
 ARCHITECTS

THE MSGR. JOHN H. PHUC
 EDUCATION CENTER - PHASE III
 13396 RIVER ROAD, DESTREHAN, LOUISIANA
 ST. CHARLES BORROMEO CATHOLIC CHURCH PARISH

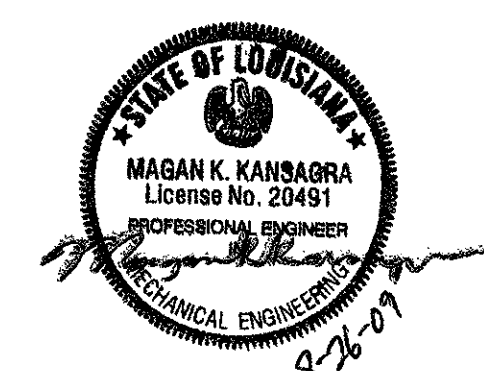
M101



NOTES

1. REFER TO SHEET M104 FOR SCHEDULE.
2. REFER TO SHEET M105 FOR DETAILS.
3. REFER TO SHEET M106 FOR DETAILS, NOTES AND SYMBOL SCHEDULE.
4. DEMOLITION NOTES: CONTRACTOR SHALL FIELD VERIFY HVAC EQUIPMENT, DUCTWORK, PIPING, ETC. AND REMOVE FROM BUILDING.

1 FIRST FLOOR PLAN - HVAC
 M101 SCALE: 1/8"=1'-0"



M-K ENGINEERING, INC.
 CONSULTING ENGINEERS
 HVAC-PLUMBING-FIRE PROTECTION-ELECTRICAL
 4323 Division Street, Suite 211
 Metairie, LA 70002
 Tel:(504) 887-2376, Fax:(504) 887-2302
 Email: MKansagra@M-K-E.com
 M-K Project No.: 02105

1 OF 6 SHEETS
 DATE:
 SEPT. 11, 2009
 CD-1705