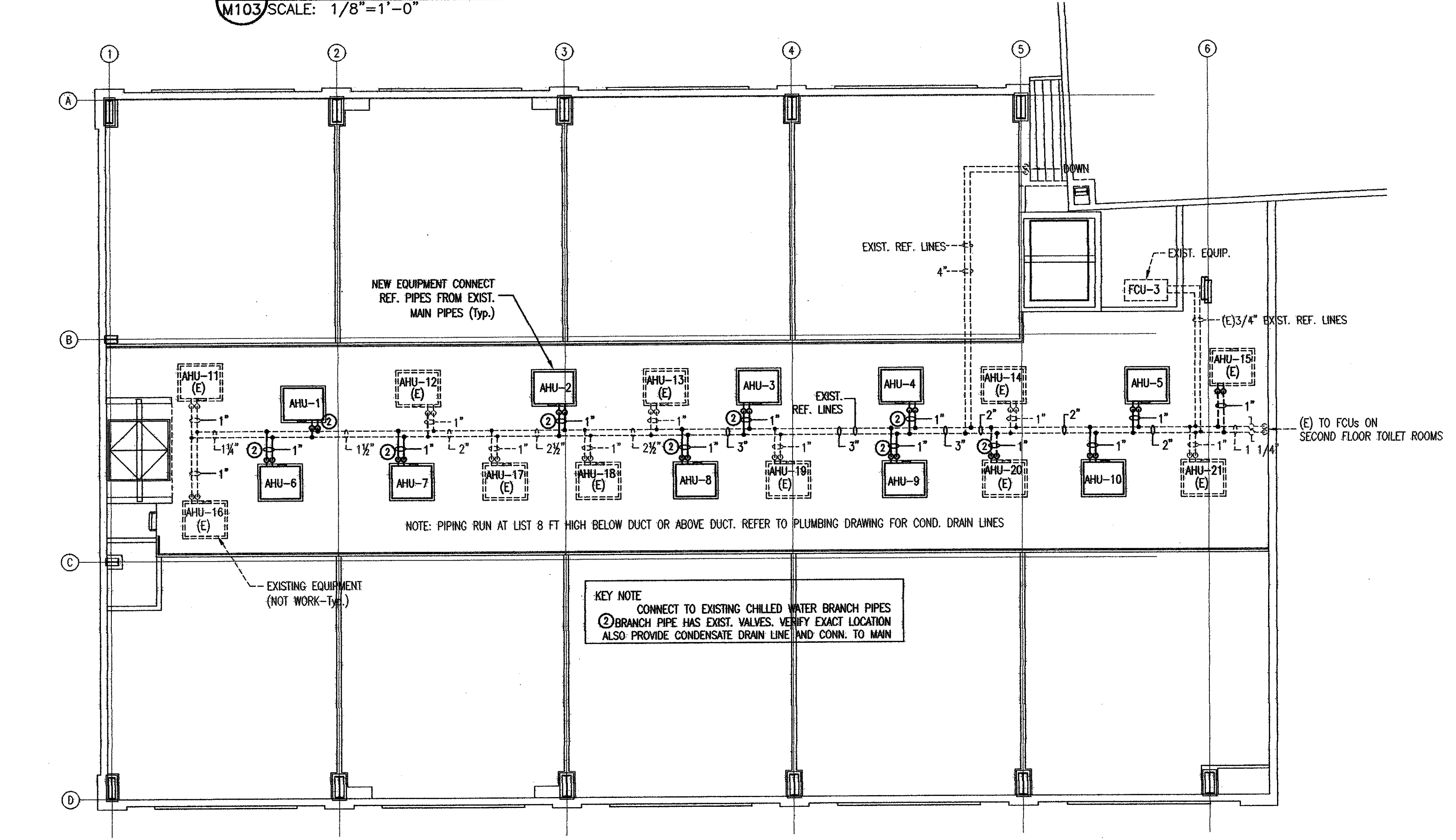
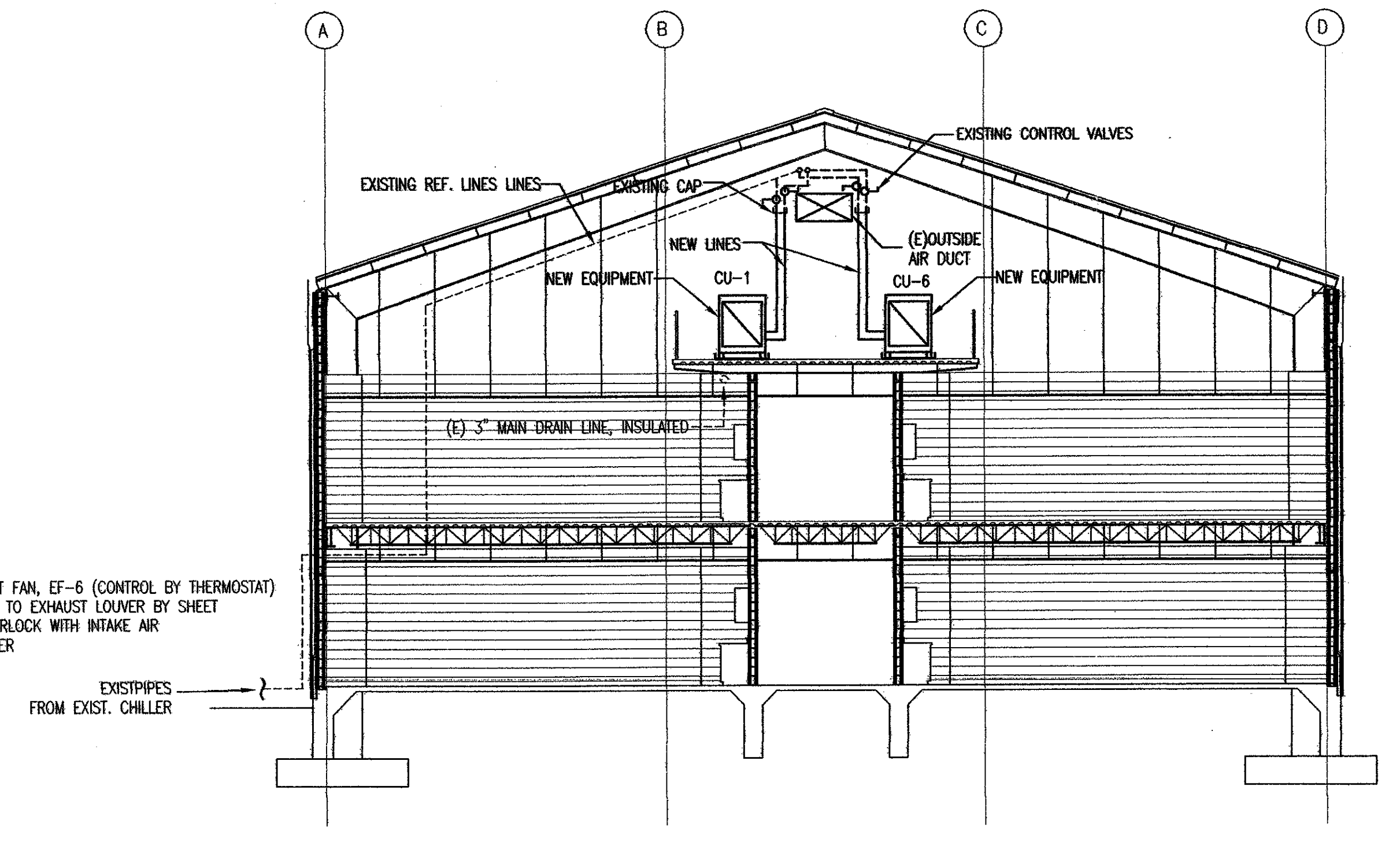


**1 MEZZANINE FLOOR PLAN - HVAC**  
 M103 SCALE: 1/8"=1'-0"

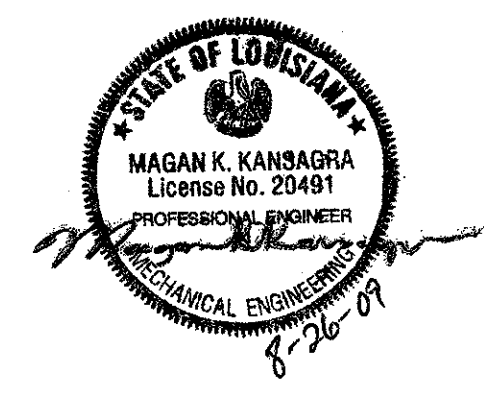


**2 MEZZANINE FLOOR PLAN - CHILLED WATER PIPES.**  
 M103 SCALE: 1/8"=1'-0"



**3 SECTION VIEW-MEZZANINE FLOOR PLAN-CHILLED WATER PIPES & DUCTS**  
 M103 SCALE: 1/8"=1'-0"

- NOTES:**
1. REFER TO SHEET M104 FOR THE SCHEDULES
  2. REFER TO SHEET M105 FOR DETAILS.
  3. REFER TO SHEET M106 FOR DETAILS, NOTES AND SYMBOLE SCHEDULES



**M-K ENGINEERING, INC.**  
 CONSULTING ENGINEERS  
 HVAC-PLUMBING-FIRE PROTECTION-ELECTRICAL  
 4323 Division Street, Suite 211  
 Metairie, LA 70002  
 Tel:(504) 887-2376, Fax:(504) 887-2302  
 Email: MKansagra@M-K-E.com  
 M-K Project No.: 02105

John E. Campo, Architect  
 105 Ducayet Dr.  
 Destrehan, LA 70047  
 (985) 764-8969

**Campo Design**  
 ARCHITECTS

**THE MSGR. JOHN H. PHUC**  
 EDUCATION CENTER - PHASE III  
 13396 RIVER ROAD, DESTREHAN, LOUISIANA  
 ST. CHARLES BORROMEO CATHOLIC CHURCH PARISH

**M103**

3 OF 6 SHEETS  
 DATE:  
 SEPT. 11, 2009  
 CD - 1705