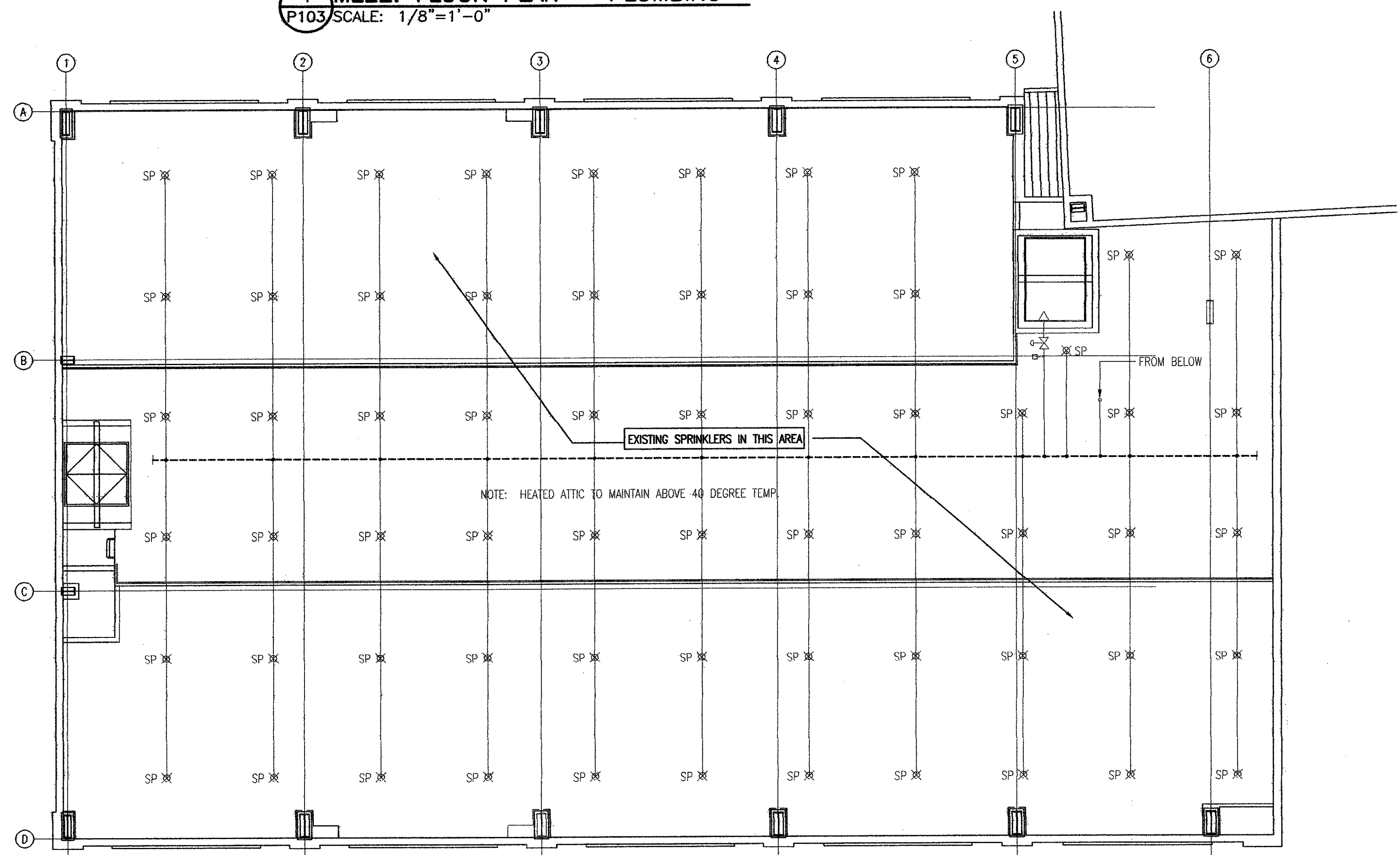
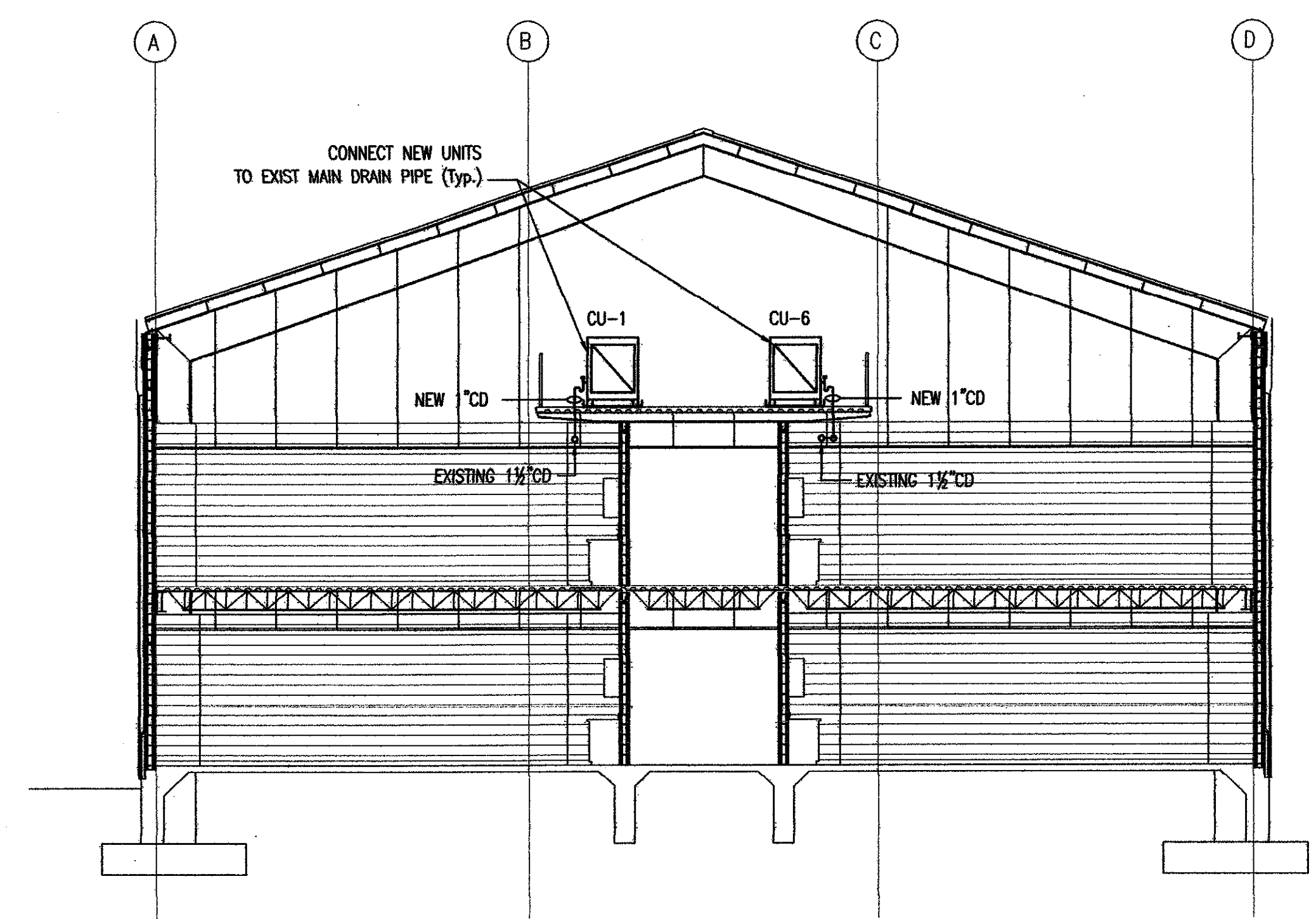


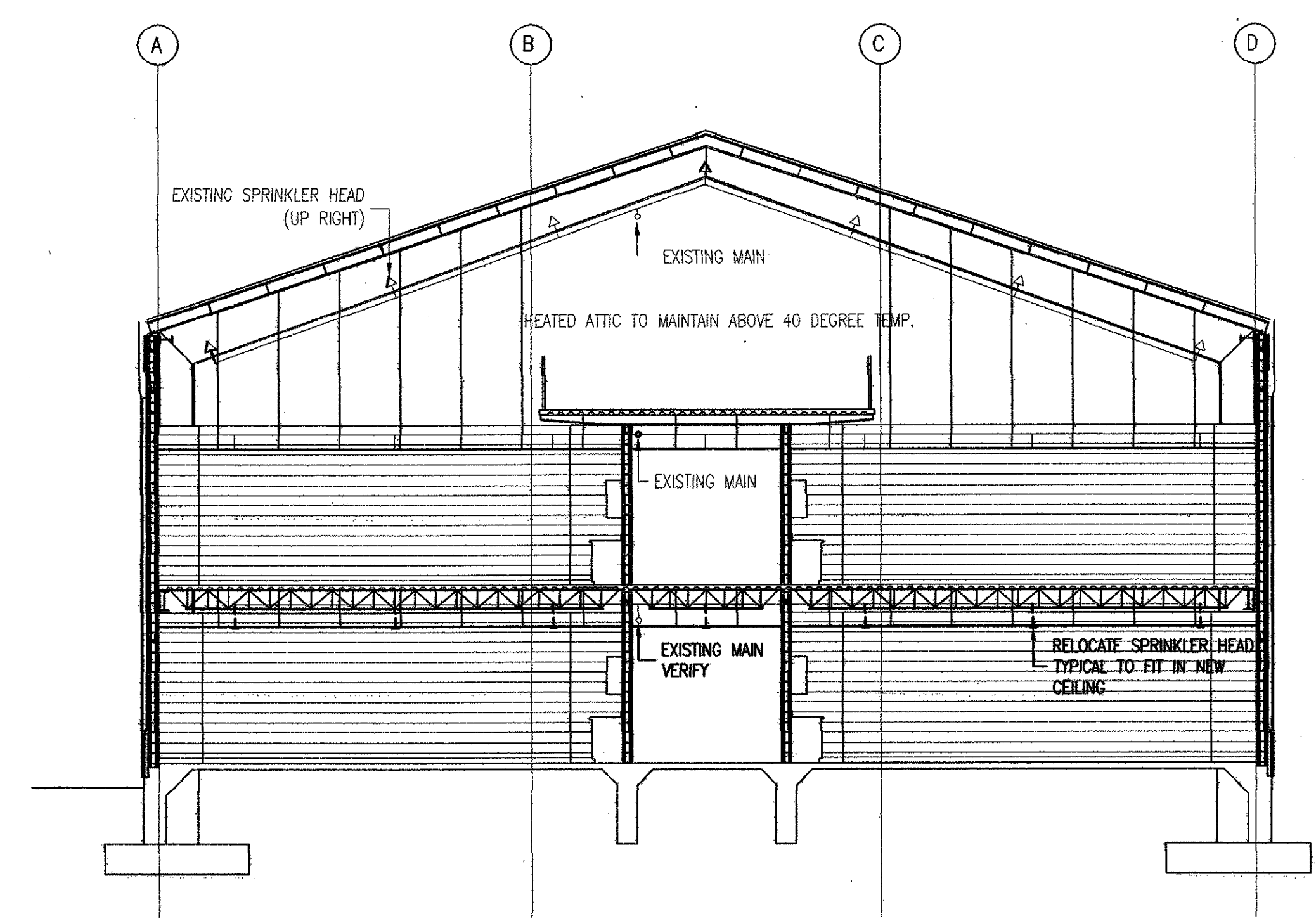
**1 MEZZ. FLOOR PLAN - PLUMBING**  
 P103 SCALE: 1/8"=1'-0"



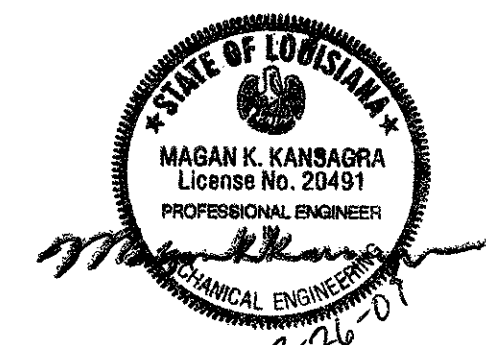
**2 MEZZ. FLOOR PLAN - SPRINKLER**  
 P103 SCALE: 1/8"=1'-0"



**3 SECTION VIEW MEZZ. FLOOR- PLUMBING**  
 P103 SCALE: 1/8"=1'-0"



**4 SECTION VIEW MEZZ. FLOOR- SPRINKLER**  
 P103 SCALE: 1/8"=1'-0"



**M-K ENGINEERING, INC.**  
 CONSULTING ENGINEERS  
 HVAC-PLUMBING-FIRE PROTECTION-ELECTRICAL  
 4323 Division Street, Suite 211  
 Metairie, LA 70002  
 Tel:(504) 887-2376, Fax:(504) 887-2302  
 Email: MKansagra@M-K-E.com  
 M-K Project No.: 02105

John E. Campo, Architect  
 105 Ducayet Dr.  
 Destrehan, LA 70047  
 (985) 764-8959

**Campo Designs**  
 ARCHITECTS

**THE MSGR. JOHN H. PHUC**  
 EDUCATION CENTER - PHASE III  
 13396 RIVER ROAD, DESTREHAN, LOUISIANA  
 ST. CHARLES BORROMEO CATHOLIC CHURCH PARISH

**P103**

3 OF 4 SHEETS

DATE:  
 SEPT. 11, 2009  
 CD -1705