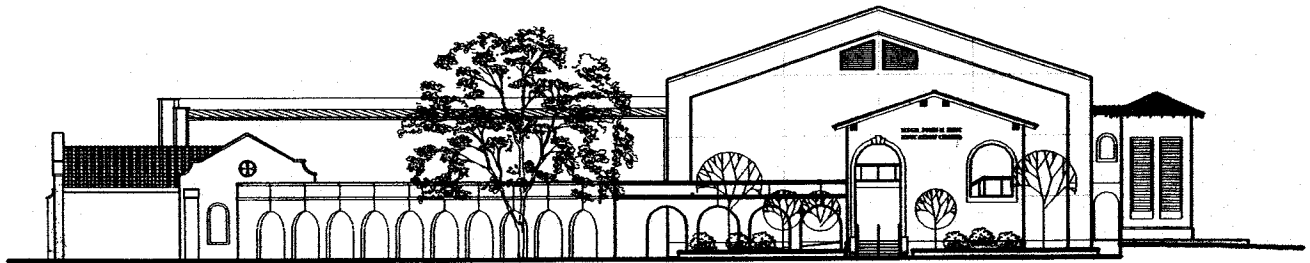


PROJECT MANUAL for the

**MSGR. JOHN N. PHUC
EDUCATION CENTER
FINAL PHASE**



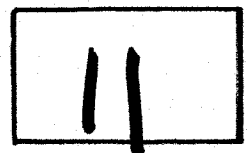
for

**The Roman Catholic Congregation
of St. Charles Borromeo**

13396 RIVER ROAD
DESTREHAN, LOUISIANA

Msgr. Harry J. Bugler, Pastor
Dr. Donalyn Hassenboehler, Principal
Ronald J. Rodrigue, Parish Administrator

SET NO.





Specifications

FOR THE CONSTRUCTION OF THE

MSGR. JOHN N. PHUC EDUCATION CENTER FINAL PHASE

FOR

**The Roman Catholic Congregation of
St. Charles Borromeo
Destrehan, Louisiana**

**13396 River Road
Destrehan, Louisiana**

PREPARED BY

CAMPO DESIGNS – ARCHITECTS
105 Ducayet Drive
Destrehan, Louisiana 70047
(985) 764-8959

ARCHITECTURAL

M-K ENGINEERING, INC.
4323 Division Street Ste. 211
Metairie, Louisiana 70002
(504) 887-2376

MECHANICAL & ELECTRICAL

DANNY HEBERT, P.E.
One American Place
Luling, Louisiana 70070
(985) 785-9742

CIVIL ENGINEER

BADEAUX ENGINEERS, INC.
115 E. Sixth Street P. O. Box 1056
Thibodaux, Louisiana 70302
(985) 447-2317

STRUCTURAL

September 11, 2009

CD 1705



SPECIFICATION INDEX

BIDDING REQUIREMENTS

ADVERTISEMENT FOR BIDS	00050 - 1
INSTRUCTION TO BIDDERS	00100 - 5
BID FORM	00350 - 4

CONDITIONS OF THE CONTRACT

GENERAL CONDITIONS	00500 - 1
SUPPLEMENTARY CONDITIONS	00800 -12

DIVISION 1 - GENERAL REQUIREMENTS

SUMMARY OF THE WORK	01010 - 3
ALLOWANCES AND UNIT COST	01020 - 1
ALTERNATES	01030 - 2
COORDINATION	01040 - 3
CUTTING AND PATCHING	01045 - 5
CONSTRUCTION FACILITIES AND TEMP. CONTROLS	01500 - 3
MATERIALS AND EQUIPMENT	01600 - 3
SUBSTITUTIONS	01631 - 3
CONTRACT CLOSEOUT	01700 - 5
WARRANTIES	01740 - 3
CIVIL SECTIONS	
CIVIL SITEWORK JOINT MATERIALS FOR PAVEMENTS	01005 - 1

DIVISIONS 2 - SITE WORK

TERMITE CONTROL	02282 - 2
EXCAVATION, FILLING AND GRADING	02300 - 4
CIVIL SECTIONS	
CIVIL SITEWORK PAVEMENT PATCHING	02528 - 2
CIVIL SITEWORK STORM DRAINAGE	02630 -22
ASPHALT PAVING	02743 - 5
CIVIL SITEWORK CONCRETE WORK	03010 -11

DIVISION 3 - CONCRETE

CONCRETE FORMWORK	03100 - 2
CONCRETE REINFORCING STEEL	03200 - 3
CAST-IN-PLACE CONCRETE	03300 - 7

DIVISION 4 - MASONRY

UNIT MASONRY	04200 - 8
--------------	-----------

DIVISION 5 - METALS

STRUCTURAL STEEL AND STEEL JOIST	05100 - 5
----------------------------------	-----------

METAL FABRICATIONS 05500 - 5
DIVISION 6 - WOOD AND PLASTICS

FINISH CARPENTRY 06200 - 7

DIVISION 7 - THERMAL AND MOISTURE PROTECTION

WATERPROOFING AND DAMPROOFING 07112 - 4
BUILDING INSULATION 07210 - 3
PAN AND COVER CLAY TILE ROOFING 07320 - 5
TWO-PLY MODIFIED BITUMEN ROOFING and GUARANTY 07526 - 8
CEILING ACCESS PANELS 07720 - 2
SEALANTS AND CAULKING 07901 - 7

DIVISIONS 8 - DOORS AND WINDOWS

STEEL DOORS AND FRAMES 08110 - 5
FLUSH WOOD DOORS 08211 - 4
DOOR HARDWARE 08710 - 7
DOOR GLAZING 08520 - 3

DIVISION 9 - FINISHES

PORTLAND CEMENT PLASTER 09220 - 10
GYPSUM BOARD ASSEMBLIES 09255 - 9
ACOUSTICAL CEILINGS 09511 - 4
RESILIENT FLOORING 09660 - 7
RESILIENT WALL BASE 09678 - 4
PAINT 09900 - 12

DIVISION 10 - SPECIALTIES

SIGNAGE 10426 - 3
TOILET ROOM ACCESSORIES 10800 - 4

DIVISION 11 - EQUIPMENT NOT USED

DIVISION 12 - FURNISHINGS

CASEWORK 12372 - 6

DIVISION 13 - SPECIAL CONSTRUCTION NOT USED

DIVISION 14 - CONVEYING SYSTEMS

HYDRAULIC ELEVATORS 14240 - 11

DIVISION 15 - MECHANICAL

MECHANICAL BASIC REQUIREMENTS 15010 - 13
VALVES 15100 - 8
METER AND GAGES 15120 - 6
HANGERS AND SUPPORTS 15140 - 9
MECHANICAL IDENTIFICATION 15190 - 7
MECHANICAL VIBRATION CONTROLS 15240 - 5
MECHANICAL INSULATION 15250 - 12

EQUIPMENT INSULATION	15260 - 5
DUCT INSULATION	15270 - 10
SPRINKLER SYSTEMS	15330 - 9
WATER DISTRIBUTION PIPING	15410 - 8
SOIL, WASTE AND VENT PIPING	15420 - 6
PLUMBING SPECIALTIES	15430 - 7
PLUMBING FIXTURES	15440 - 6
HYDRONIC PIPING	15510 - 9
METAL DUCTS	15815 - 5
DUCT ACCESSORIES	15820 - 6
CENTRAL STATION AIR HANDLING UNITS	15850 - 8
DIFFUSERS, REGISTERS AND GRILLES	15860 - 4
TESTINGS, ADJUSTING AND BALANCING	15990 - 12
TEMPERATURE CONTROL	15995 - 7

DIVISION 16 - ELECTRICAL

BASIC ELECTRICAL REQUIREMENTS	16010 - 4
BASIC ELECTRICAL MATERIAL AND METHODS	16050 - 10
CONDUIT	16110 - 3
CONDUCTORS AND CABLES	16120 - 4
RACEWAYS AND BOXES	16130 - 8
WIRING DEVICES	16140 - 6
DISCONNECTS	16170 - 3
EQUIPMENT WIRING SYSTEMS	16180 - 5
SUPPORT DEVICES	16190 - 2
ELECTRICAL IDENTIFICATION	16195 - 7
GROUNDING	16450 - 6
INTERIOR LIGHTING	16510 - 9
EXTERIOR LIGHTING	16520 - 8
SCHOOL INTERCOM AND PROGRAM EQUIPMENT	16725 - 9
FIRE ALARM SYSTEM	16850 - 16

