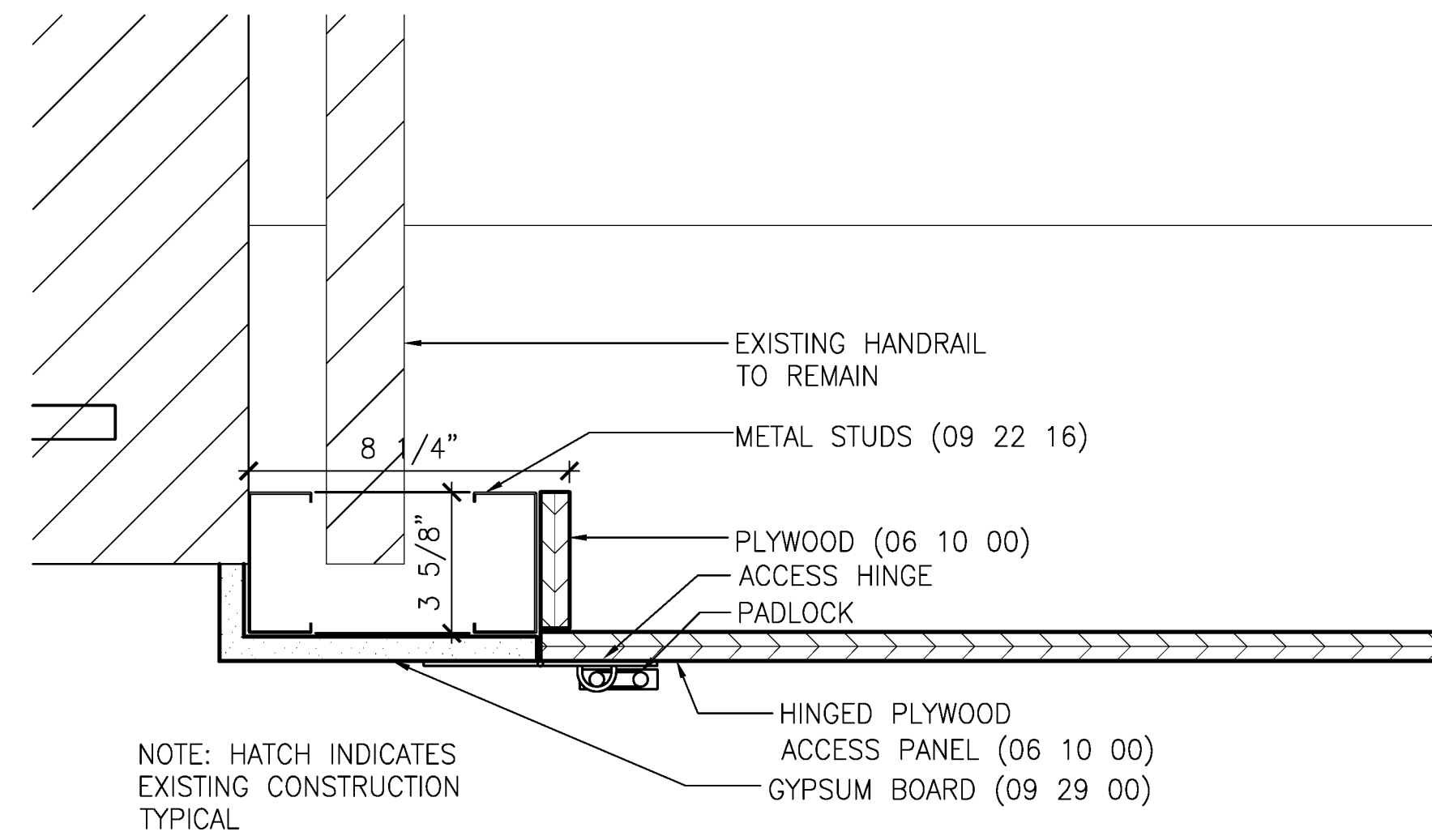
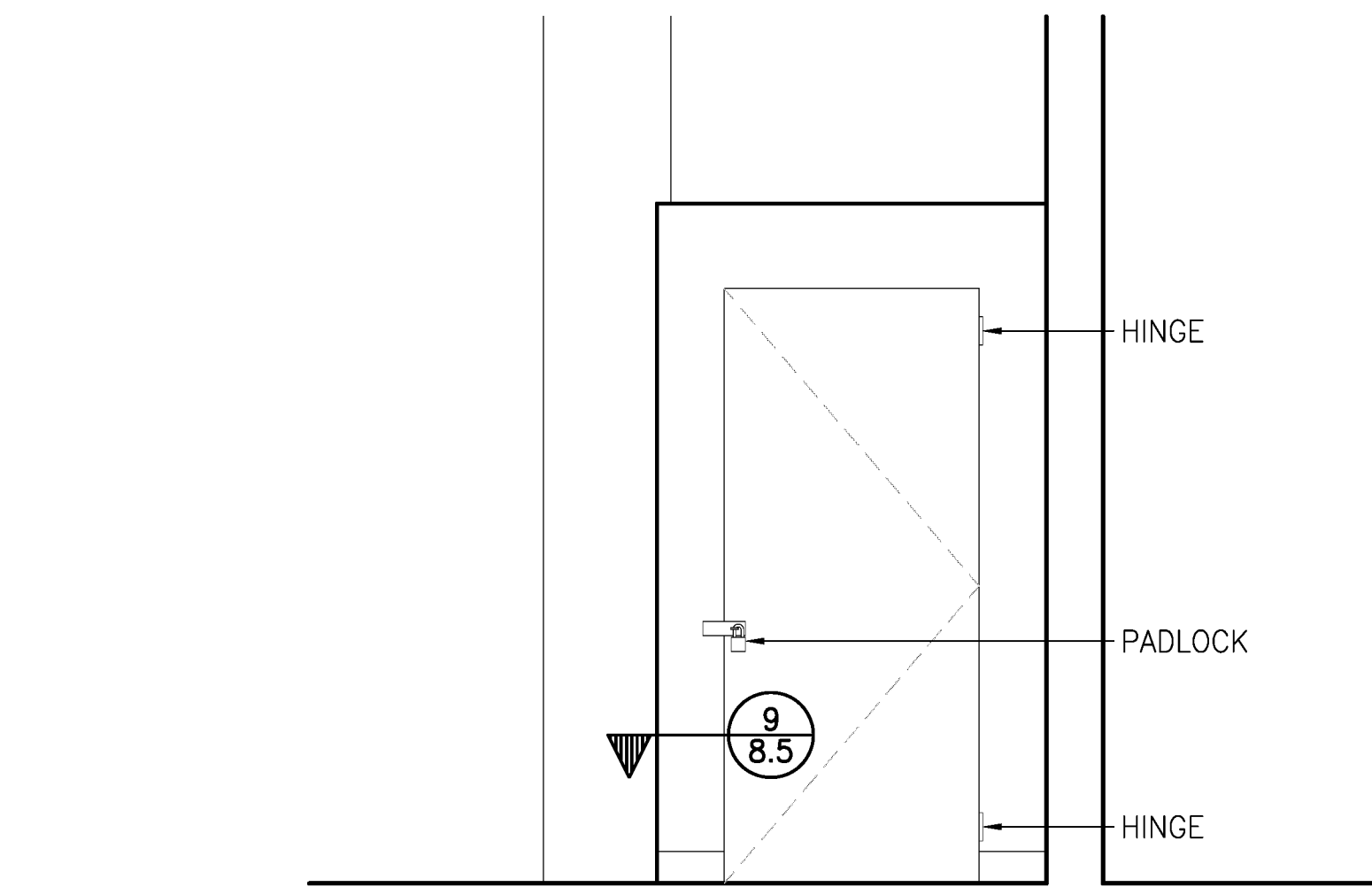


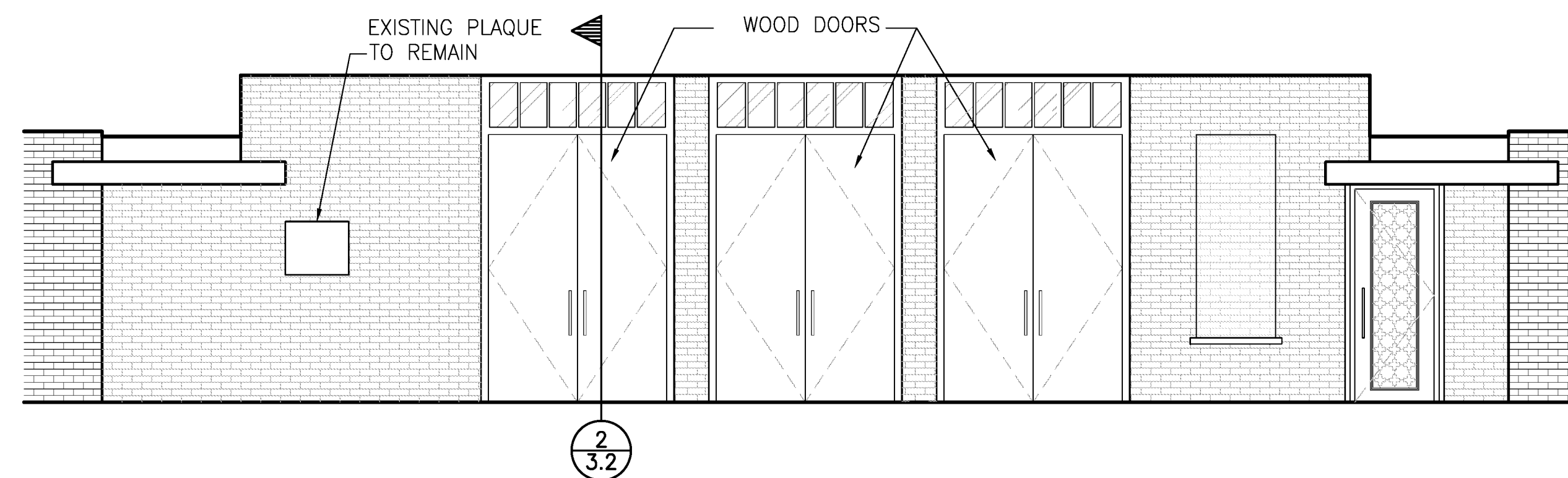
10 HORIZONTAL SECTION
 8.1 | 8.5 AT NORTH NICHE 1 1/2" = 1'-0"



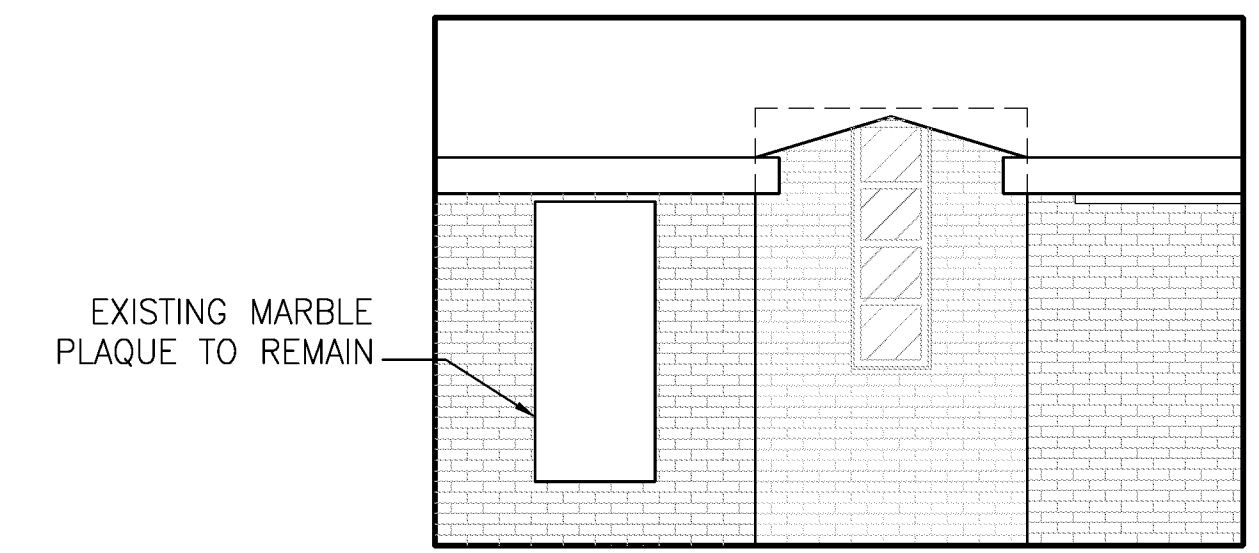
9 HORIZONTAL SECTION
 8.5 | 8.5 THRU CHOIR LOFT ACCESS PANEL 3" = 1'-0"



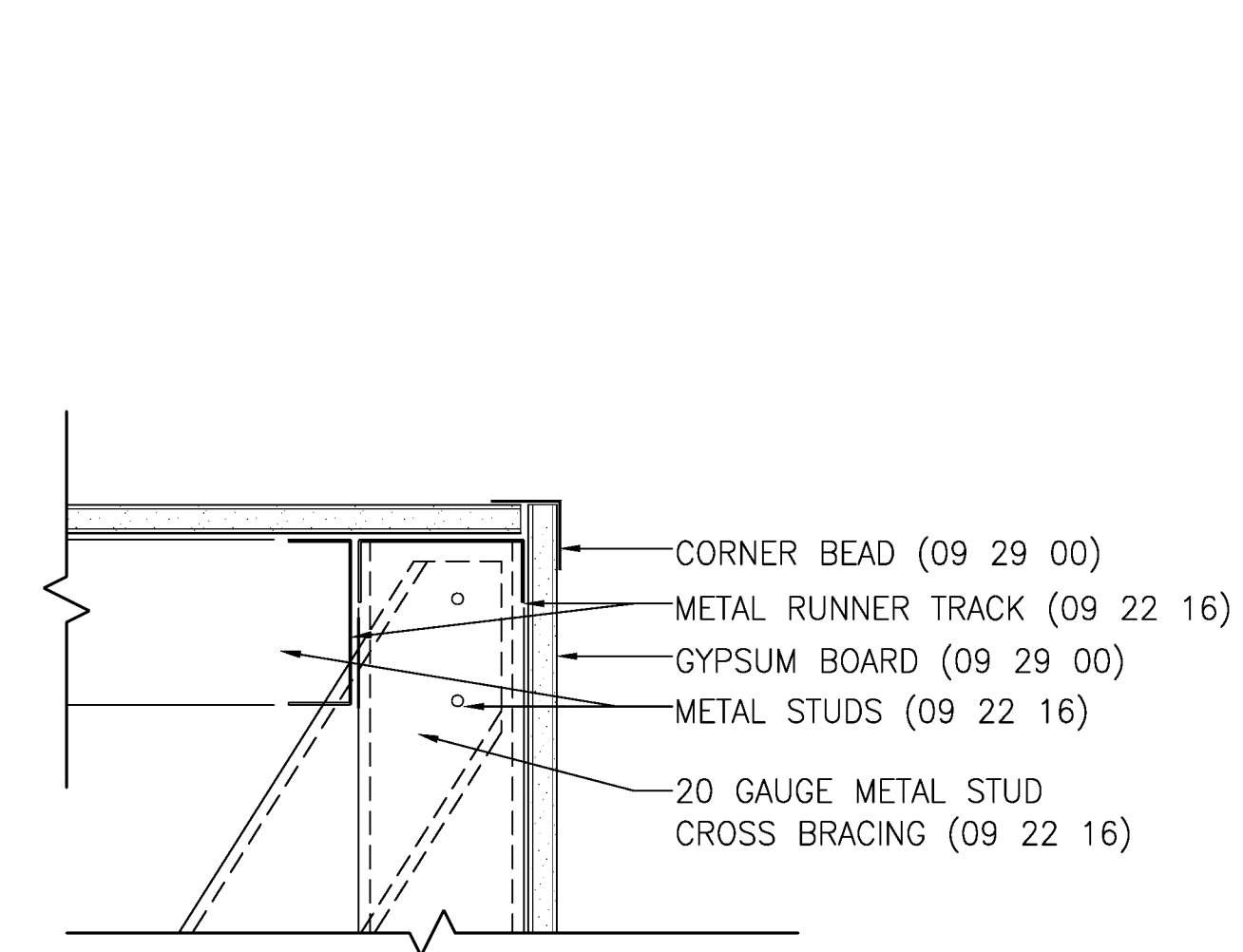
8 ELEVATION OF CHOIR LOFT ACCESS PANEL
 2.1 | 8.5 AT NORTH NICHE 1/2" = 1'-0"



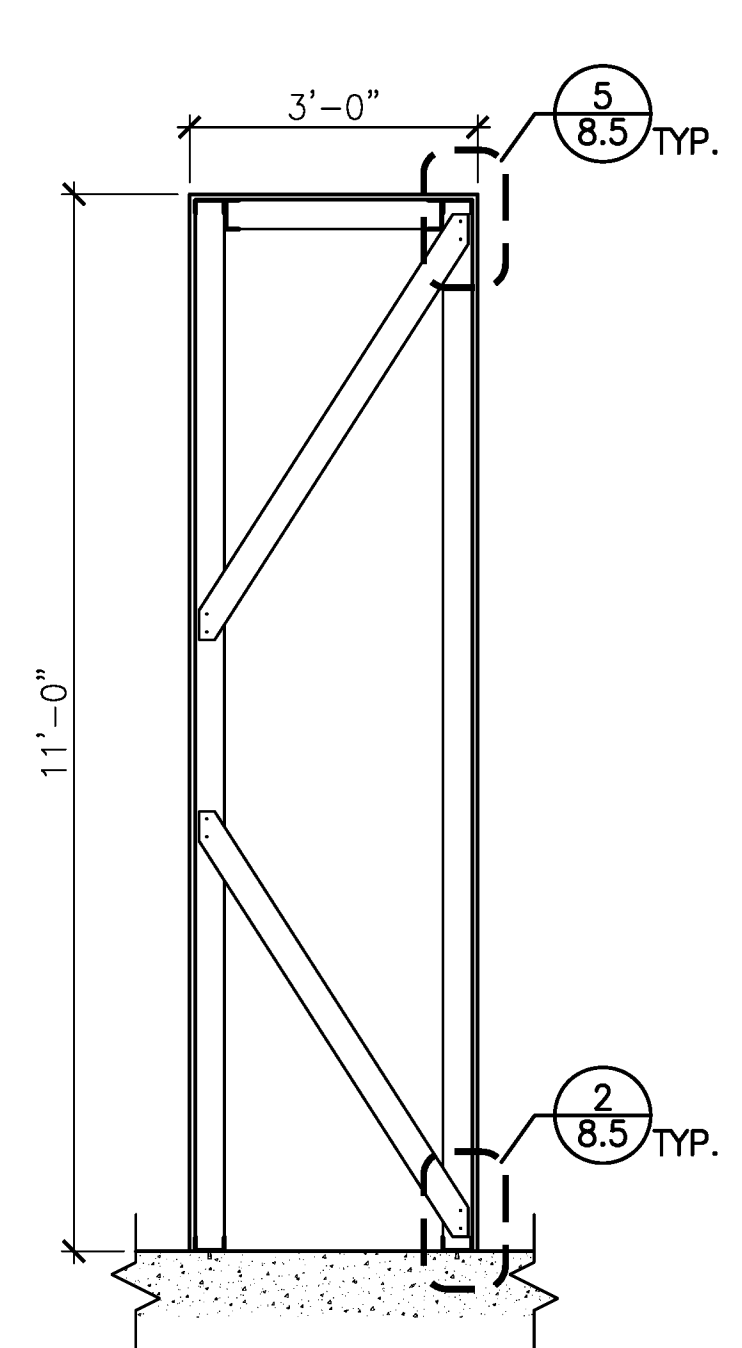
7 ELEVATION OF ENTRY DOORS
 2.1 | 8.5 AT ELYSIAN FIELDS AVE. 1/4" = 1'-0"



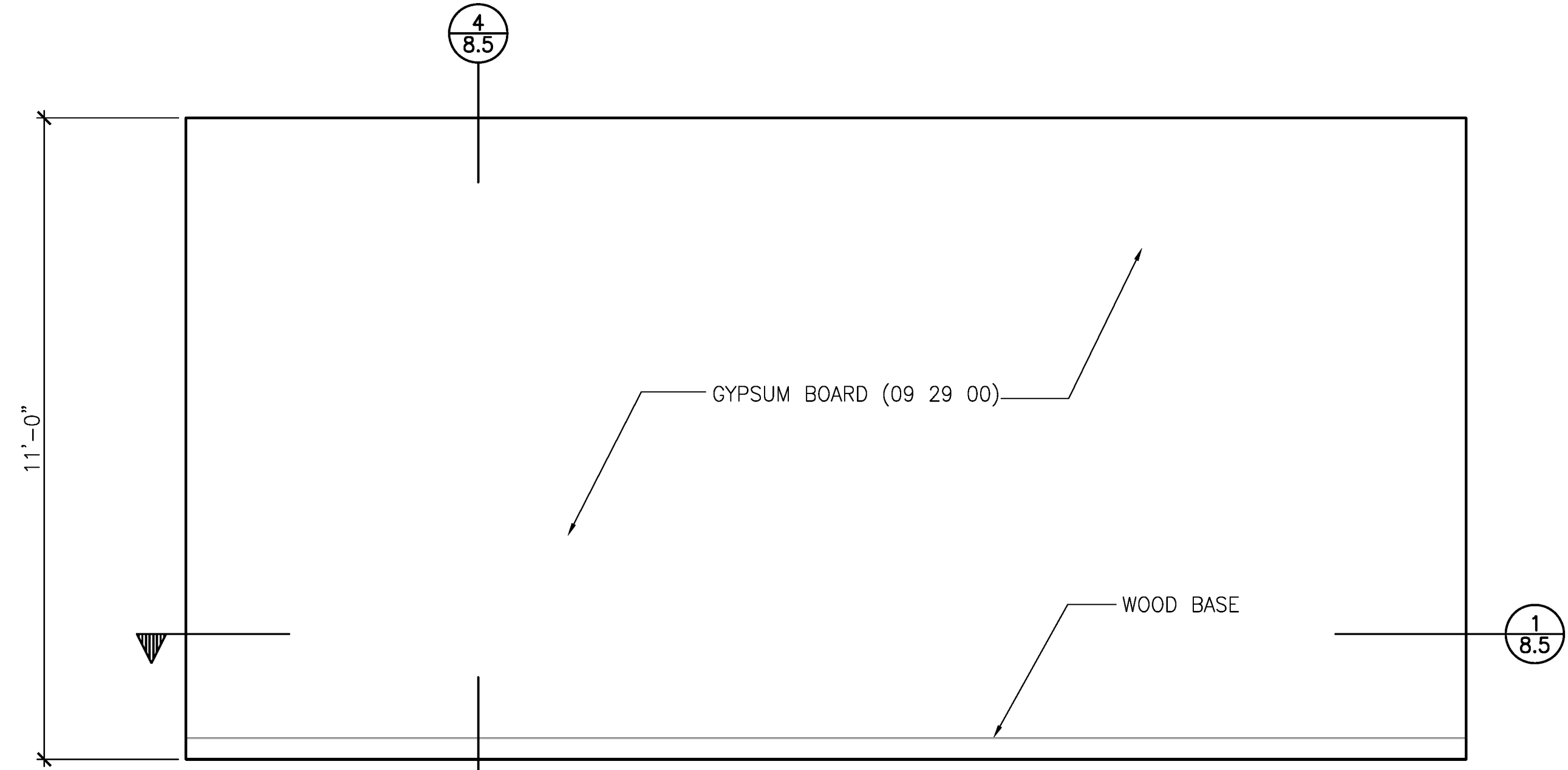
6 ELEVATION OF NORTH CORRIDOR
 2.1 | 8.5 FROM NARTHEX 1/4" = 1'-0"



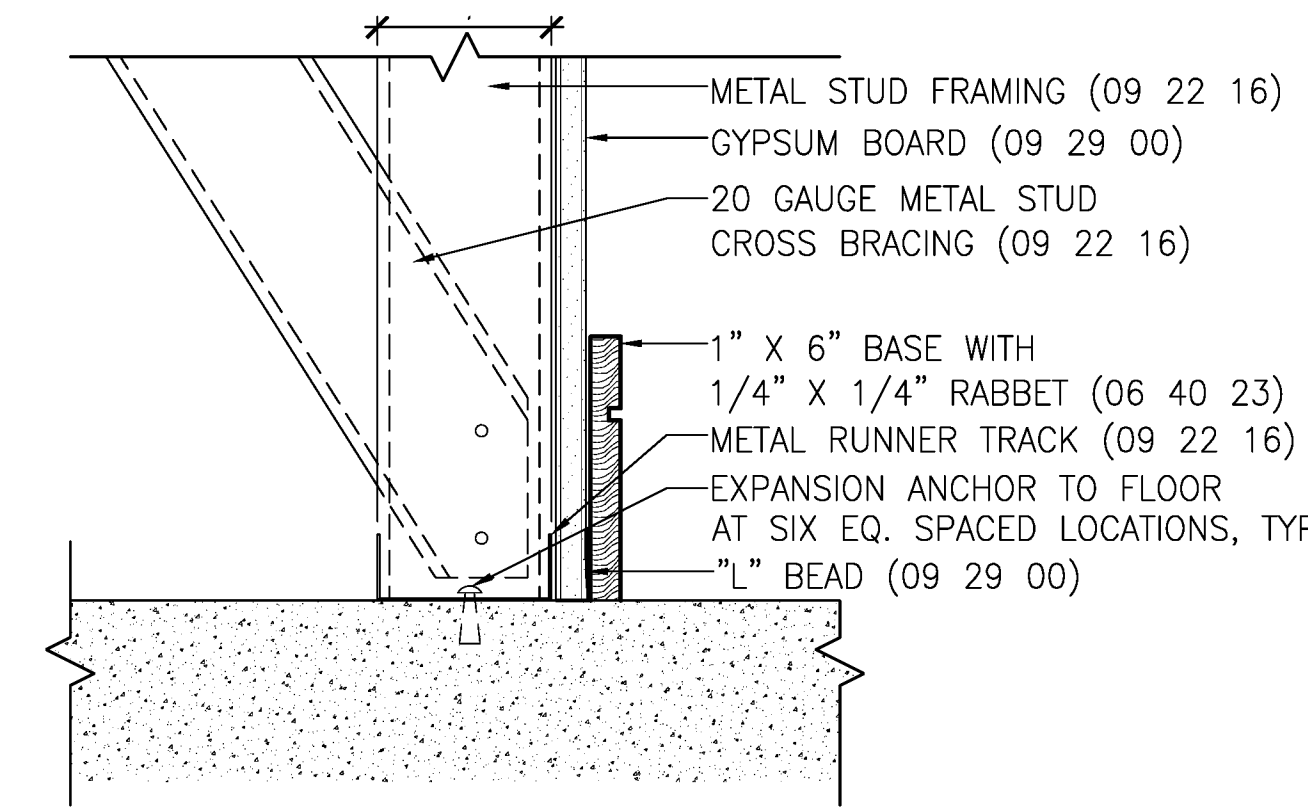
5 SECTION THRU PARTITION
 8.5 | 8.5 AT HEAD 3" = 1'-0"



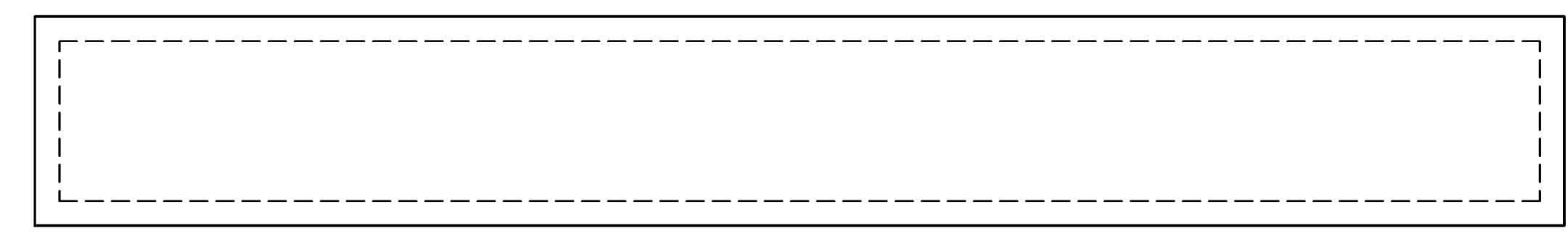
4 SECTION THRU PARTITION
 8.5 | 8.5 1/2" = 1'-0"



3 ELEVATION OF PARTITION
 2.1 | 8.5 1/2" = 1'-0"



2 SECTION THRU PARTITION
 8.5 | 8.5 AT SILL 3" = 1'-0"



1 HORIZONTAL SECTION THRU PARTITION
 8.5 | 8.5 1/2" = 1'-0"

