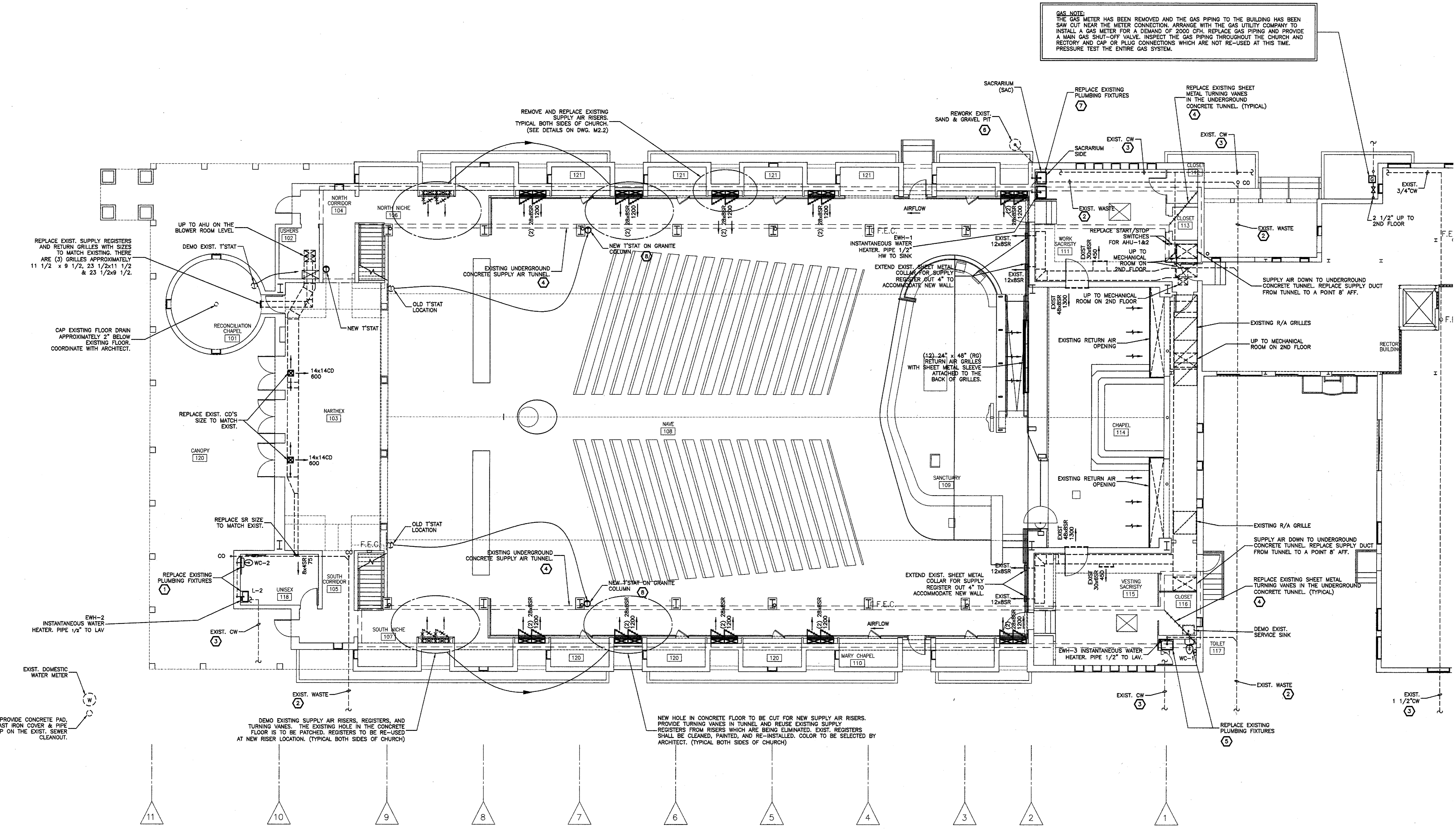


T:\C:\DPROA\2900\S\2911\AC_1FL-RENO.dwg, 7/7/2010 9:22:25 AM, JHV
 T:\Users\jvh\OneDrive\Documents\2911\Drawings\AC_1FL-RENO\NOTES\1-1.dwg February 5, 2010
 T:\Users\jvh\OneDrive\Documents\2911\Drawings\AC_1FL-RENO\NOTES\1-2.dwg January 12, 2010
 T:\Users\jvh\OneDrive\Documents\2911\Drawings\AC_1FL-RENO\NOTES\1-3.dwg
 T:\Users\jvh\OneDrive\Documents\2911\Drawings\AC_1FL-RENO\NOTES\1-4.dwg
 T:\Users\jvh\OneDrive\Documents\2911\Drawings\AC_1FL-RENO\NOTES\1-5.dwg
 T:\Users\jvh\OneDrive\Documents\2911\Drawings\AC_1FL-RENO\NOTES\1-6.dwg
 T:\Users\jvh\OneDrive\Documents\2911\Drawings\AC_1FL-RENO\NOTES\1-7.dwg
 T:\Users\jvh\OneDrive\Documents\2911\Drawings\AC_1FL-RENO\NOTES\1-8.dwg
 T:\Users\jvh\OneDrive\Documents\2911\Drawings\AC_1FL-RENO\NOTES\1-9.dwg
 T:\Users\jvh\OneDrive\Documents\2911\Drawings\AC_1FL-RENO\NOTES\1-10.dwg
 T:\Users\jvh\OneDrive\Documents\2911\Drawings\AC_1FL-RENO\NOTES\1-11.dwg
 T:\Users\jvh\OneDrive\Documents\2911\Drawings\AC_1FL-RENO\NOTES\1-12.dwg
 T:\Users\jvh\OneDrive\Documents\2911\Drawings\AC_1FL-RENO\NOTES\1-13.dwg
 T:\Users\jvh\OneDrive\Documents\2911\Drawings\AC_1FL-RENO\NOTES\1-14.dwg
 T:\Users\jvh\OneDrive\Documents\2911\Drawings\AC_1FL-RENO\NOTES\1-15.dwg
 T:\Users\jvh\OneDrive\Documents\2911\Drawings\AC_1FL-RENO\NOTES\1-16.dwg
 T:\Users\jvh\OneDrive\Documents\2911\Drawings\AC_1FL-RENO\NOTES\1-17.dwg
 T:\Users\jvh\OneDrive\Documents\2911\Drawings\AC_1FL-RENO\NOTES\1-18.dwg
 T:\Users\jvh\OneDrive\Documents\2911\Drawings\AC_1FL-RENO\NOTES\1-19.dwg
 T:\Users\jvh\OneDrive\Documents\2911\Drawings\AC_1FL-RENO\NOTES\1-20.dwg
 T:\Users\jvh\OneDrive\Documents\2911\Drawings\AC_1FL-RENO\NOTES\1-21.dwg
 T:\Users\jvh\OneDrive\Documents\2911\Drawings\AC_1FL-RENO\NOTES\1-22.dwg
 T:\Users\jvh\OneDrive\Documents\2911\Drawings\AC_1FL-RENO\NOTES\1-23.dwg
 T:\Users\jvh\OneDrive\Documents\2911\Drawings\AC_1FL-RENO\NOTES\1-24.dwg
 T:\Users\jvh\OneDrive\Documents\2911\Drawings\AC_1FL-RENO\NOTES\1-25.dwg
 T:\Users\jvh\OneDrive\Documents\2911\Drawings\AC_1FL-RENO\NOTES\1-26.dwg
 T:\Users\jvh\OneDrive\Documents\2911\Drawings\AC_1FL-RENO\NOTES\1-27.dwg
 T:\Users\jvh\OneDrive\Documents\2911\Drawings\AC_1FL-RENO\NOTES\1-28.dwg
 T:\Users\jvh\OneDrive\Documents\2911\Drawings\AC_1FL-RENO\NOTES\1-29.dwg
 T:\Users\jvh\OneDrive\Documents\2911\Drawings\AC_1FL-RENO\NOTES\1-30.dwg
 T:\Users\jvh\OneDrive\Documents\2911\Drawings\AC_1FL-RENO\NOTES\1-31.dwg
 T:\Users\jvh\OneDrive\Documents\2911\Drawings\AC_1FL-RENO\NOTES\1-32.dwg
 T:\Users\jvh\OneDrive\Documents\2911\Drawings\AC_1FL-RENO\NOTES\1-33.dwg
 T:\Users\jvh\OneDrive\Documents\2911\Drawings\AC_1FL-RENO\NOTES\1-34.dwg
 T:\Users\jvh\OneDrive\Documents\2911\Drawings\AC_1FL-RENO\NOTES\1-35.dwg
 T:\Users\jvh\OneDrive\Documents\2911\Drawings\AC_1FL-RENO\NOTES\1-36.dwg
 T:\Users\jvh\OneDrive\Documents\2911\Drawings\AC_1FL-RENO\NOTES\1-37.dwg
 T:\Users\jvh\OneDrive\Documents\2911\Drawings\AC_1FL-RENO\NOTES\1-38.dwg
 T:\Users\jvh\OneDrive\Documents\2911\Drawings\AC_1FL-RENO\NOTES\1-39.dwg
 T:\Users\jvh\OneDrive\Documents\2911\Drawings\AC_1FL-RENO\NOTES\1-40.dwg
 T:\Users\jvh\OneDrive\Documents\2911\Drawings\AC_1FL-RENO\NOTES\1-41.dwg
 T:\Users\jvh\OneDrive\Documents\2911\Drawings\AC_1FL-RENO\NOTES\1-42.dwg
 T:\Users\jvh\OneDrive\Documents\2911\Drawings\AC_1FL-RENO\NOTES\1-43.dwg
 T:\Users\jvh\OneDrive\Documents\2911\Drawings\AC_1FL-RENO\NOTES\1-44.dwg
 T:\Users\jvh\OneDrive\Documents\2911\Drawings\AC_1FL-RENO\NOTES\1-45.dwg
 T:\Users\jvh\OneDrive\Documents\2911\Drawings\AC_1FL-RENO\NOTES\1-46.dwg
 T:\Users\jvh\OneDrive\Documents\2911\Drawings\AC_1FL-RENO\NOTES\1-47.dwg
 T:\Users\jvh\OneDrive\Documents\2911\Drawings\AC_1FL-RENO\NOTES\1-48.dwg
 T:\Users\jvh\OneDrive\Documents\2911\Drawings\AC_1FL-RENO\NOTES\1-49.dwg
 T:\Users\jvh\OneDrive\Documents\2911\Drawings\AC_1FL-RENO\NOTES\1-50.dwg
 T:\Users\jvh\OneDrive\Documents\2911\Drawings\AC_1FL-RENO\NOTES\1-51.dwg
 T:\Users\jvh\OneDrive\Documents\2911\Drawings\AC_1FL-RENO\NOTES\1-52.dwg
 T:\Users\jvh\OneDrive\Documents\2911\Drawings\AC_1FL-RENO\NOTES\1-53.dwg
 T:\Users\jvh\OneDrive\Documents\2911\Drawings\AC_1FL-RENO\NOTES\1-54.dwg
 T:\Users\jvh\OneDrive\Documents\2911\Drawings\AC_1FL-RENO\NOTES\1-55.dwg
 T:\Users\jvh\OneDrive\Documents\2911\Drawings\AC_1FL-RENO\NOTES\1-56.dwg
 T:\Users\jvh\OneDrive\Documents\2911\Drawings\AC_1FL-RENO\NOTES\1-57.dwg
 T:\Users\jvh\OneDrive\Documents\2911\Drawings\AC_1FL-RENO\NOTES\1-58.dwg
 T:\Users\jvh\OneDrive\Documents\2911\Drawings\AC_1FL-RENO\NOTES\1-59.dwg
 T:\Users\jvh\OneDrive\Documents\2911\Drawings\AC_1FL-RENO\NOTES\1-60.dwg
 T:\Users\jvh\OneDrive\Documents\2911\Drawings\AC_1FL-RENO\NOTES\1-61.dwg
 T:\Users\jvh\OneDrive\Documents\2911\Drawings\AC_1FL-RENO\NOTES\1-62.dwg
 T:\Users\jvh\OneDrive\Documents\2911\Drawings\AC_1FL-RENO\NOTES\1-63.dwg
 T:\Users\jvh\OneDrive\Documents\2911\Drawings\AC_1FL-RENO\NOTES\1-64.dwg
 T:\Users\jvh\OneDrive\Documents\2911\Drawings\AC_1FL-RENO\NOTES\1-65.dwg
 T:\Users\jvh\OneDrive\Documents\2911\Drawings\AC_1FL-RENO\NOTES\1-66.dwg
 T:\Users\jvh\OneDrive\Documents\2911\Drawings\AC_1FL-RENO\NOTES\1-67.dwg
 T:\Users\jvh\OneDrive\Documents\2911\Drawings\AC_1FL-RENO\NOTES\1-68.dwg
 T:\Users\jvh\OneDrive\Documents\2911\Drawings\AC_1FL-RENO\NOTES\1-69.dwg
 T:\Users\jvh\OneDrive\Documents\2911\Drawings\AC_1FL-RENO\NOTES\1-70.dwg
 T:\Users\jvh\OneDrive\Documents\2911\Drawings\AC_1FL-RENO\NOTES\1-71.dwg
 T:\Users\jvh\OneDrive\Documents\2911\Drawings\AC_1FL-RENO\NOTES\1-72.dwg
 T:\Users\jvh\OneDrive\Documents\2911\Drawings\AC_1FL-RENO\NOTES\1-73.dwg
 T:\Users\jvh\OneDrive\Documents\2911\Drawings\AC_1FL-RENO\NOTES\1-74.dwg
 T:\Users\jvh\OneDrive\Documents\2911\Drawings\AC_1FL-RENO\NOTES\1-75.dwg
 T:\Users\jvh\OneDrive\Documents\2911\Drawings\AC_1FL-RENO\NOTES\1-76.dwg
 T:\Users\jvh\OneDrive\Documents\2911\Drawings\AC_1FL-RENO\NOTES\1-77.dwg
 T:\Users\jvh\OneDrive\Documents\2911\Drawings\AC_1FL-RENO\NOTES\1-78.dwg
 T:\Users\jvh\OneDrive\Documents\2911\Drawings\AC_1FL-RENO\NOTES\1-79.dwg
 T:\Users\jvh\OneDrive\Documents\2911\Drawings\AC_1FL-RENO\NOTES\1-80.dwg
 T:\Users\jvh\OneDrive\Documents\2911\Drawings\AC_1FL-RENO\NOTES\1-81.dwg
 T:\Users\jvh\OneDrive\Documents\2911\Drawings\AC_1FL-RENO\NOTES\1-82.dwg
 T:\Users\jvh\OneDrive\Documents\2911\Drawings\AC_1FL-RENO\NOTES\1-83.dwg
 T:\Users\jvh\OneDrive\Documents\2911\Drawings\AC_1FL-RENO\NOTES\1-84.dwg
 T:\Users\jvh\OneDrive\Documents\2911\Drawings\AC_1FL-RENO\NOTES\1-85.dwg
 T:\Users\jvh\OneDrive\Documents\2911\Drawings\AC_1FL-RENO\NOTES\1-86.dwg
 T:\Users\jvh\OneDrive\Documents\2911\Drawings\AC_1FL-RENO\NOTES\1-87.dwg
 T:\Users\jvh\OneDrive\Documents\2911\Drawings\AC_1FL-RENO\NOTES\1-88.dwg
 T:\Users\jvh\OneDrive\Documents\2911\Drawings\AC_1FL-RENO\NOTES\1-89.dwg
 T:\Users\jvh\OneDrive\Documents\2911\Drawings\AC_1FL-RENO\NOTES\1-90.dwg
 T:\Users\jvh\OneDrive\Documents\2911\Drawings\AC_1FL-RENO\NOTES\1-91.dwg
 T:\Users\jvh\OneDrive\Documents\2911\Drawings\AC_1FL-RENO\NOTES\1-92.dwg
 T:\Users\jvh\OneDrive\Documents\2911\Drawings\AC_1FL-RENO\NOTES\1-93.dwg
 T:\Users\jvh\OneDrive\Documents\2911\Drawings\AC_1FL-RENO\NOTES\1-94.dwg
 T:\Users\jvh\OneDrive\Documents\2911\Drawings\AC_1FL-RENO\NOTES\1-95.dwg
 T:\Users\jvh\OneDrive\Documents\2911\Drawings\AC_1FL-RENO\NOTES\1-96.dwg
 T:\Users\jvh\OneDrive\Documents\2911\Drawings\AC_1FL-RENO\NOTES\1-97.dwg
 T:\Users\jvh\OneDrive\Documents\2911\Drawings\AC_1FL-RENO\NOTES\1-98.dwg
 T:\Users\jvh\OneDrive\Documents\2911\Drawings\AC_1FL-RENO\NOTES\1-99.dwg
 T:\Users\jvh\OneDrive\Documents\2911\Drawings\AC_1FL-RENO\NOTES\1-100.dwg



MECHANICAL
 FIRST FLOOR PLAN - RENOVATION
 SCALE: 1/8"=1'-0"

- SPECIFIC NOTES**
- REPLACE EXISTING WC & LAV. THE ORIGINAL DRAWINGS INDICATE A WC, LAV & A SERVICE SINK WERE ORIGINALLY INSTALLED AT THIS LOCATION. REWORK EXISTING ROUGH-INS AND INSTALL NEW FIXTURES AS SHOWN. INSTALLATION SHALL MEET ADA CLEARANCE REQUIREMENTS. ANY EXISTING PIPING WHICH IS NOT RE-USED SHALL BE CUT AND CAPPED WITHIN THE FINISHED WALL.
 - THE EXISTING SEWER LINES ARE TO BE SNAKED AND POWER FLUSHED.
 - PRESSURE TEST DOMESTIC WATER PIPING THROUGHOUT THE CHURCH AND RECTORY BUILDINGS. CAP OR PLUG ANY CONNECTIONS NOT BEING RE-USED AT THIS TIME. DISINFECT EXISTING POTABLE WATER SYSTEM THROUGHOUT THE CHURCH AND RECTORY BUILDINGS.
 - THE EXISTING UNDERGROUND CONCRETE TUNNEL IS TO BE POWER CLEANED AND SEALED. REMOVE EXISTING DUCTWORK, TURNING VANES AND ACCESSORIES IN THE TUNNEL PRIOR TO CLEANING AND RE-INSTALL AFTER CLEANING AND SEALING IS COMPLETE.
 - DEMO EXISTING SERVICE WC & LAV. THE ORIGINAL DRAWINGS INDICATE A WC, SINK & A SERVICE SINK WERE ORIGINALLY INSTALLED AT THIS LOCATION. REWORK EXISTING ROUGH-INS AND INSTALL NEW FIXTURES AS SHOWN. ANY EXISTING PIPING WHICH IS NOT RE-USED SHALL BE CUT AND CAPPED WITHIN THE FINISHED WALL.
 - REWORK EXISTING SAND & GRAVEL PIT FOR SACRAMENTUM. THE EXISTING PIT IS APPROXIMATELY 24" DIAMETER AND 24" DEEP. REMOVE EXISTING SAND & GRAVEL. (DISTRIBUTE EXISTING SAND & GRAVEL ON THE EXISTING SITE) FLUSH EXISTING PIPING AND REFILL WITH FRESH SAND & GRAVEL.
 - REPLACE SAC & LAV WHICH HAVE BEEN REMOVED. REWORK EXISTING ROUGH-INS TO SUIT.
 - THE EXISTING COLUMN IS STEEL WITH GRANITE PANEL WRAP. INSTALL THERMOSTAT WIRING, CONCEALED BEHIND GRANITE. CORE DRILL GRANITE TO MOUNT THERMOSTAT.

- GENERAL NOTES**
- ALL DUCT WORK MUST BE COORDINATED WITH OTHER TRADES. DUCTWORK MUST OFFSET AND TRANSITION TO SUIT FIELD CONDITIONS. THE DRAWINGS INDICATE THE DESIGN INTENT. HOWEVER, DUCTWORK ROUTING IS DIAGRAMMATIC. REQUIRED OFFSETS AND TRANSITIONS ARE NOT SHOWN. FIELD VERIFY CLEARANCES BEFORE ORDERING DAMPERS AND OTHER AIR DISTRIBUTION DEVICES AND BEFORE FABRICATING DUCTWORK. ADJUST SIZES TO SUIT FIELD CONDITIONS.
 - ANY ITEMS OF DUCTWORK, PIPING, OR CONDUIT VISIBLE THROUGH THE CEILING AND/OR AIR DISTRIBUTION DEVICES SHALL BE PAINTED FLAT BLACK. ITEMS VISIBLE THROUGH AIR DISTRIBUTION DEVICES SHALL ALSO BE PAINTED FLAT BLACK.
 - CEILING MOUNTED DEVICES SHALL BE CENTERED IN LAY-IN CEILING TILES AND SHALL BE LOCATED SYMMETRICALLY WITH ADJACENT CEILING MOUNTED DEVICES IN GYPSUM AND OTHER CEILING TYPES.
 - FIRE/SMOKE DAMPERS SHALL BE INSTALLED IN ACCORDANCE WITH THE MANUFACTURER'S INSTALLATION INSTRUCTIONS AND IN ACCORDANCE WITH THE DAMPER UL LISTING. PROVIDE DUCT, WALL AND CEILING ACCESS DOORS AT EACH DAMPER FOR INSPECTION AND SERVICE.
 - SUPPORTS, HANGERS, BRACES, BOLTS, AND OTHER MISCELLANEOUS ITEMS INSTALLED TO SUPPORT PIPING OR EQUIPMENT SHALL BE HOT DIPPED GALVANIZED. ALL FIELD WELDS AND ANY DAMAGE TO THE GALVANIZED COATING SHALL BE COATED WITH TWO COATS OF COLD GALVANIZING COMPOUND. FACTORY FABRICATED HANGERS AND ROOFS MAY BE ZINC PLATED IN LIEU OF HOT DIPPED GALVANIZED.

NOTE:
 EXCEPT WHERE INDICATED OTHERWISE, REMOVE, CLEAN AND RE-INSTALL ALL HVAC GRILLES, DIFFUSERS, AND REGISTERS INDICATED AS EXISTING TO REMAIN.

THE EXISTING HVAC EQUIPMENT HAS NOT BEEN OPERATIONAL SINCE HURRICANE KATRINA IN 2005. ALL EXISTING EQUIPMENT INCLUDING CONDENSING UNITS, AIR HANDLING UNITS, BOILER, PUMPS SHALL BE FULLY CHARGED WITH REFRIGERANTS. THE BELTS SHALL BE CHECKED FOR PROPER TENSION AND ALIGNMENT, AND BEARINGS SHALL BE PROPERLY LUBRICATED. PROVIDE START-UP FOR THE EXISTING EQUIPMENT USING EQUIPMENT START-UP PROCEDURES RECOMMENDED BY THE EQUIPMENT MANUFACTURER AS IF THE EQUIPMENT WAS NEW.

THESE PLANS HAVE BEEN PREPARED UNDER MY CLOSE PERSONAL SUPERVISION AND TO THE BEST OF MY KNOWLEDGE AND BELIEF, THEY COMPLY WITH CITY PARISH REQUIREMENTS, I AM NOT GENERALLY ADMINISTERING THE WORK, BUT NOT TO THE EXTENT THAT WILL ELIMINATE THE NEED FOR CITY PARISH INSPECTIONS.

GVA ENGINEERING, L.L.C.
 PROJECT No. 2911