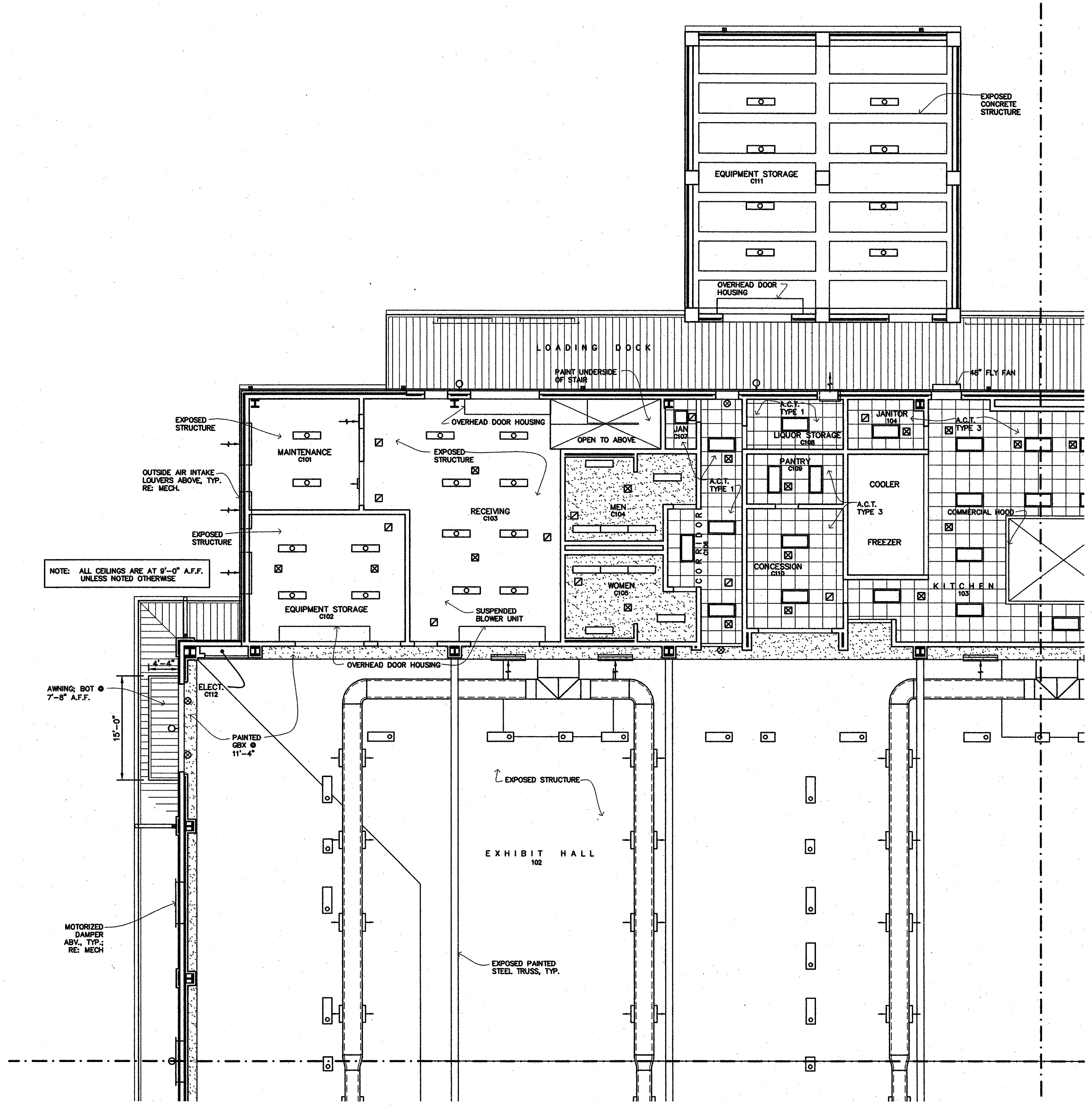


**MEYER ENGINEERS, LTD.**  
**ENGINEER & ARCHITECT**

**AREA 'B' CEILING PLAN**  
**VAL RISS PARK**  
**MULTI-PURPOSE BUILDING**  
**ST. BERNARD PARISH, OWNER**

**CEILING LEGEND**

- 2' x 2' SUSPENDED ACOUSTICAL TILE CEILING
- 5/8" GYPSUM BOARD CEILING AND SUSPENSION SYSTEM - ACCESS PANEL LOCATIONS, RE: MECH. (SEE 11/A7.4)
- PRE-FINISHED METAL SOFFIT PANELS AND SUSPENSION SYSTEM
- WALL MOUNTED LIGHT FIXTURE; RE: ELECTRICAL LIGHTING PLAN
- 2x4 LAY-IN LIGHT FIXTURE; RE: ELECTRICAL LIGHTING PLAN
- SUSPENDED LIGHT FIXTURE; RE: ELECTRICAL LIGHTING PLAN
- SURFACE MOUNTED LIGHT FIXTURE; RE: ELECTRICAL LIGHTING PLAN
- HI-BAY SUSPENDED LIGHT FIXTURE; RE: ELECTRICAL LIGHTING PLAN
- HI-BAY SUSPENDED LIGHT FIXTURE; RE: ELECTRICAL LIGHTING PLAN
- WALL MOUNTED LIGHT FIXTURE; RE: ELECTRICAL LIGHTING PLAN
- ILLUMINATED EXIT SIGN, RE: ELECTRICAL LIGHTING PLAN
- SIDE WALL SUPPLY AIR DIFFUSER, RE: HVAC PLAN
- EXHAUST / RETURN GRILL, TYP.; RE: HVAC PLAN
- SUPPLY DIFFUSER, TYP.; RE: HVAC PLAN



**1** **AREA 'C' CEILING PLAN**  
 A2.8 | A2.8 1/8" = 1'-0"