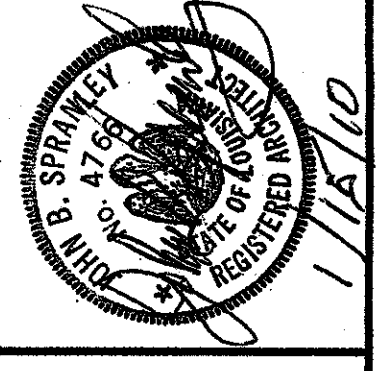


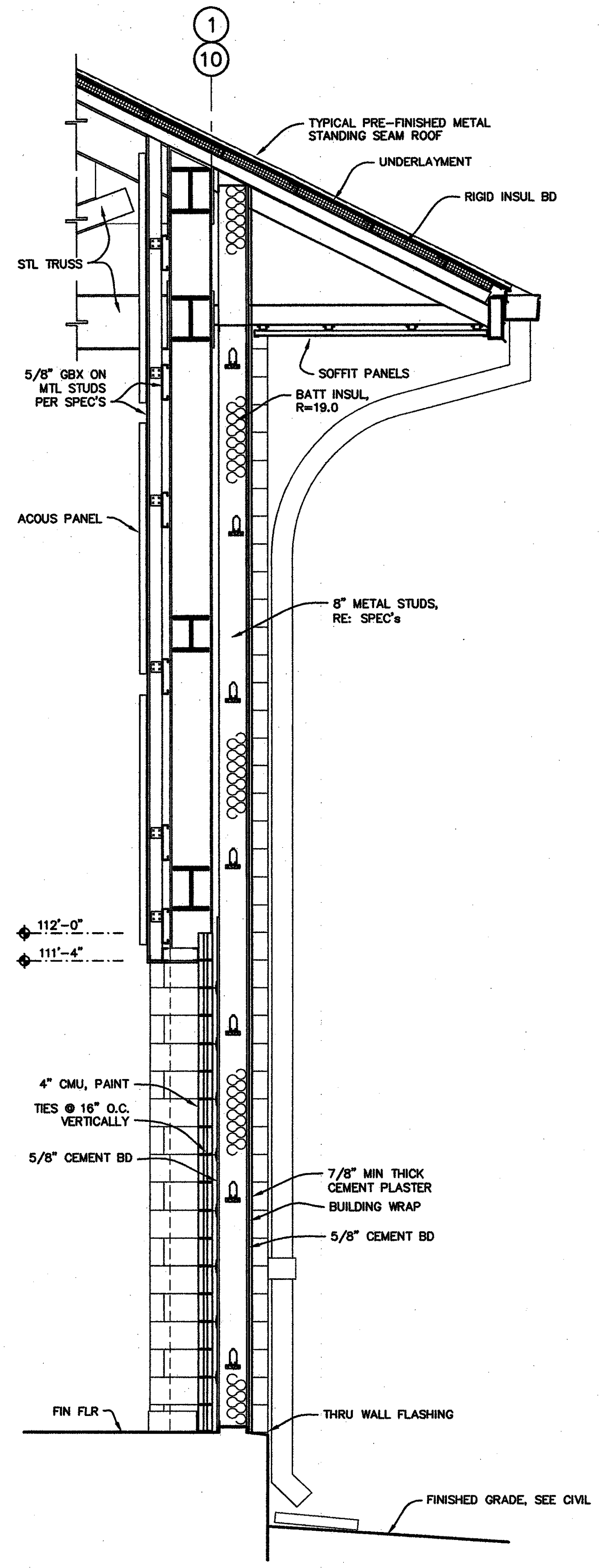
project no. 20-0901
 drawn JBS
 checked JJP
 date 01.15.2010
 revised



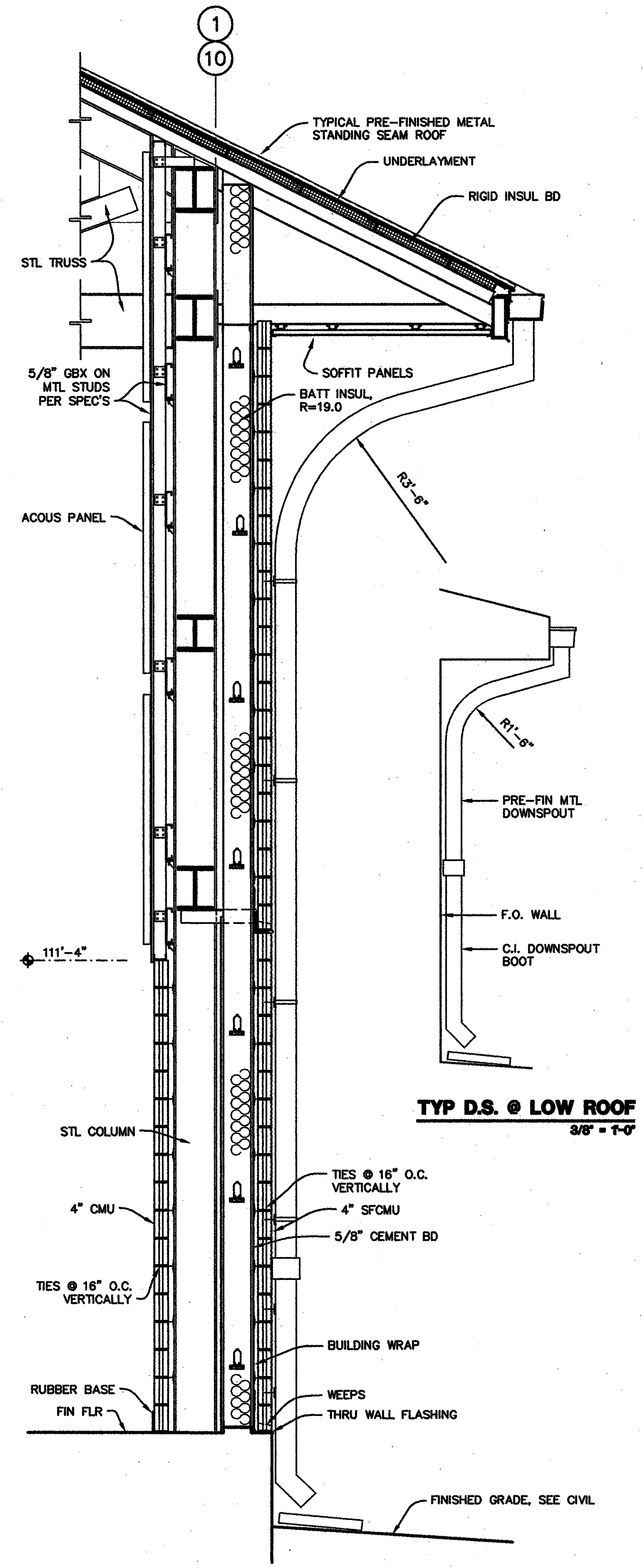
MEYER ENGINEERS, LTD.
 ENGINEER & ARCHITECT

WALL SECTIONS
 VAL RISS PARK
 MULTI-PURPOSE BUILDING
 ST. BERNARD PARISH, OWNER

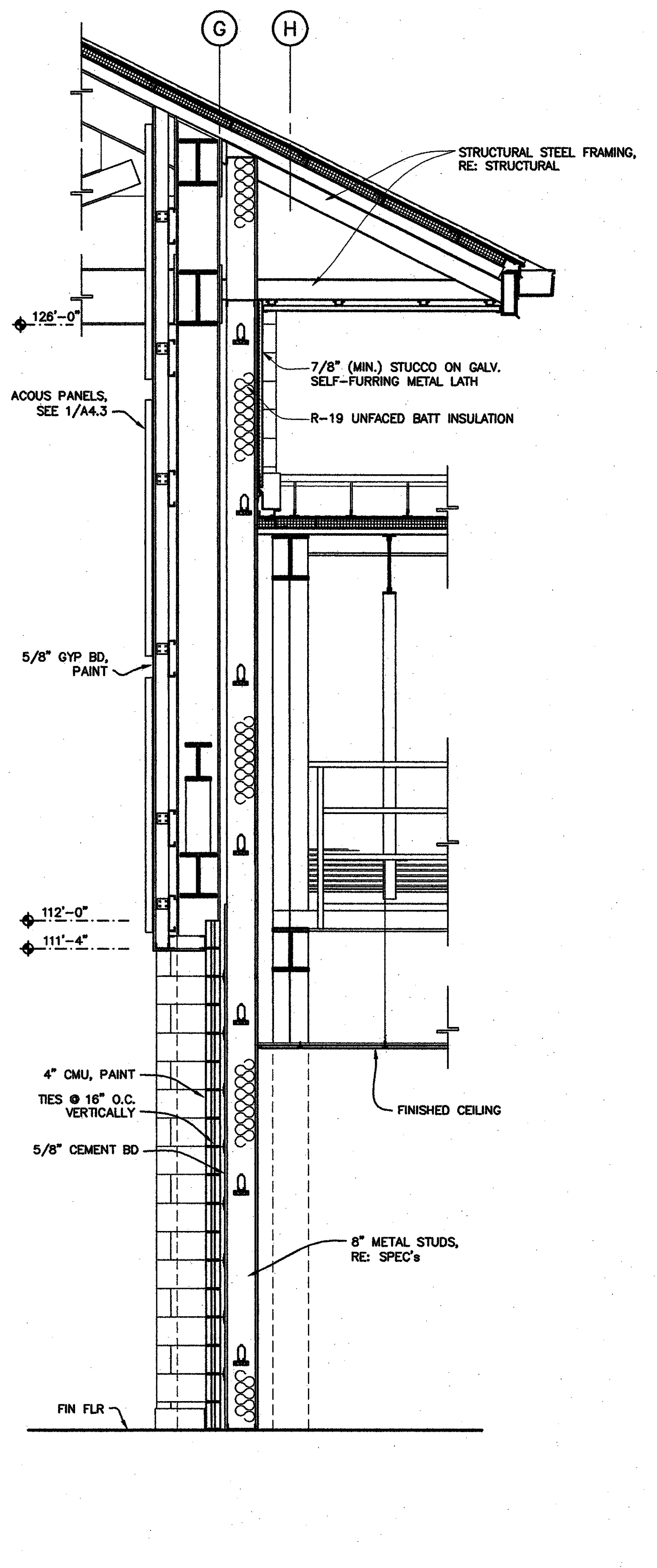
sheet no.
A4.13
 of ___ sheets



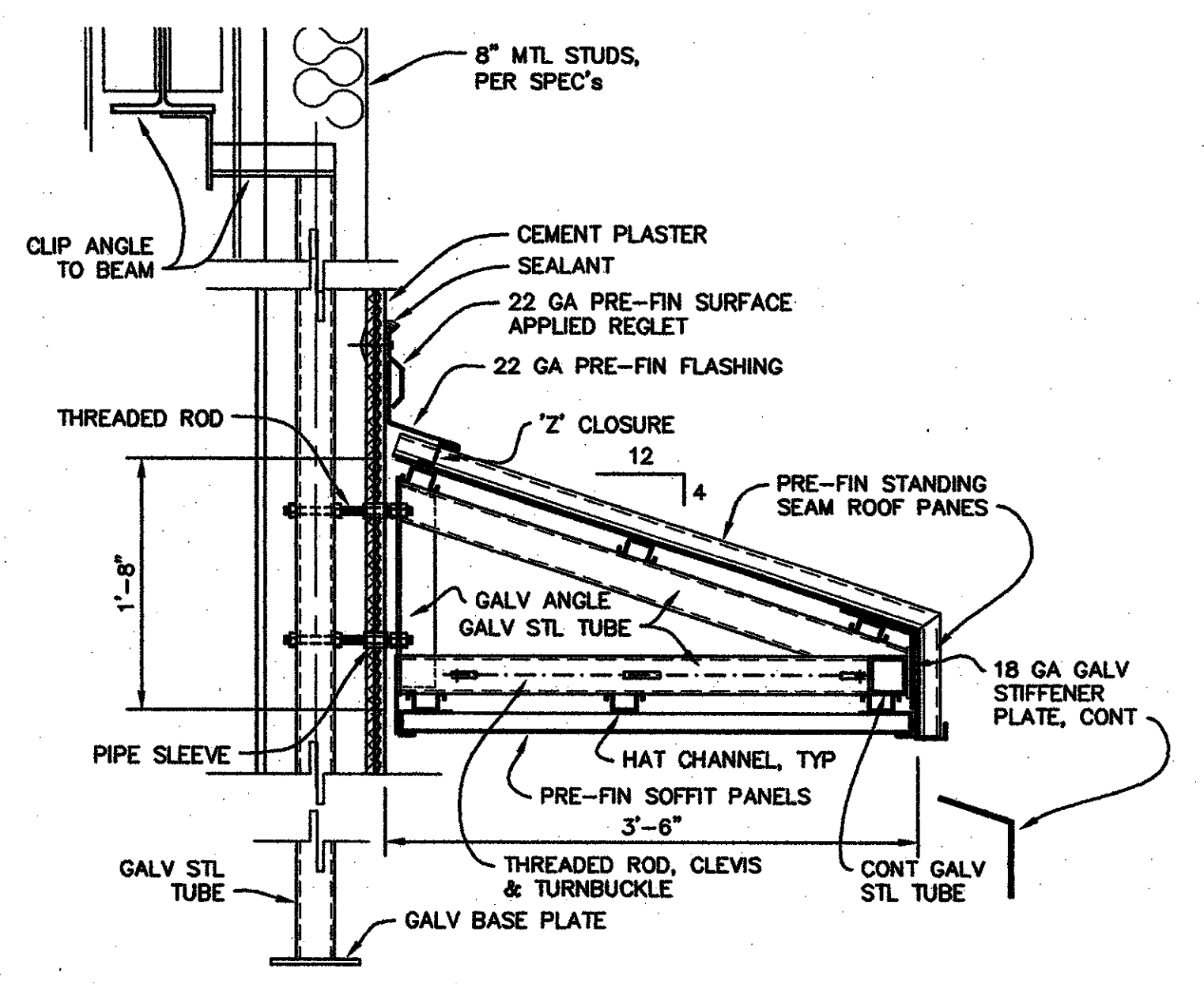
1 TYP E-W WALL SECTION
 1/2" = 1'-0"



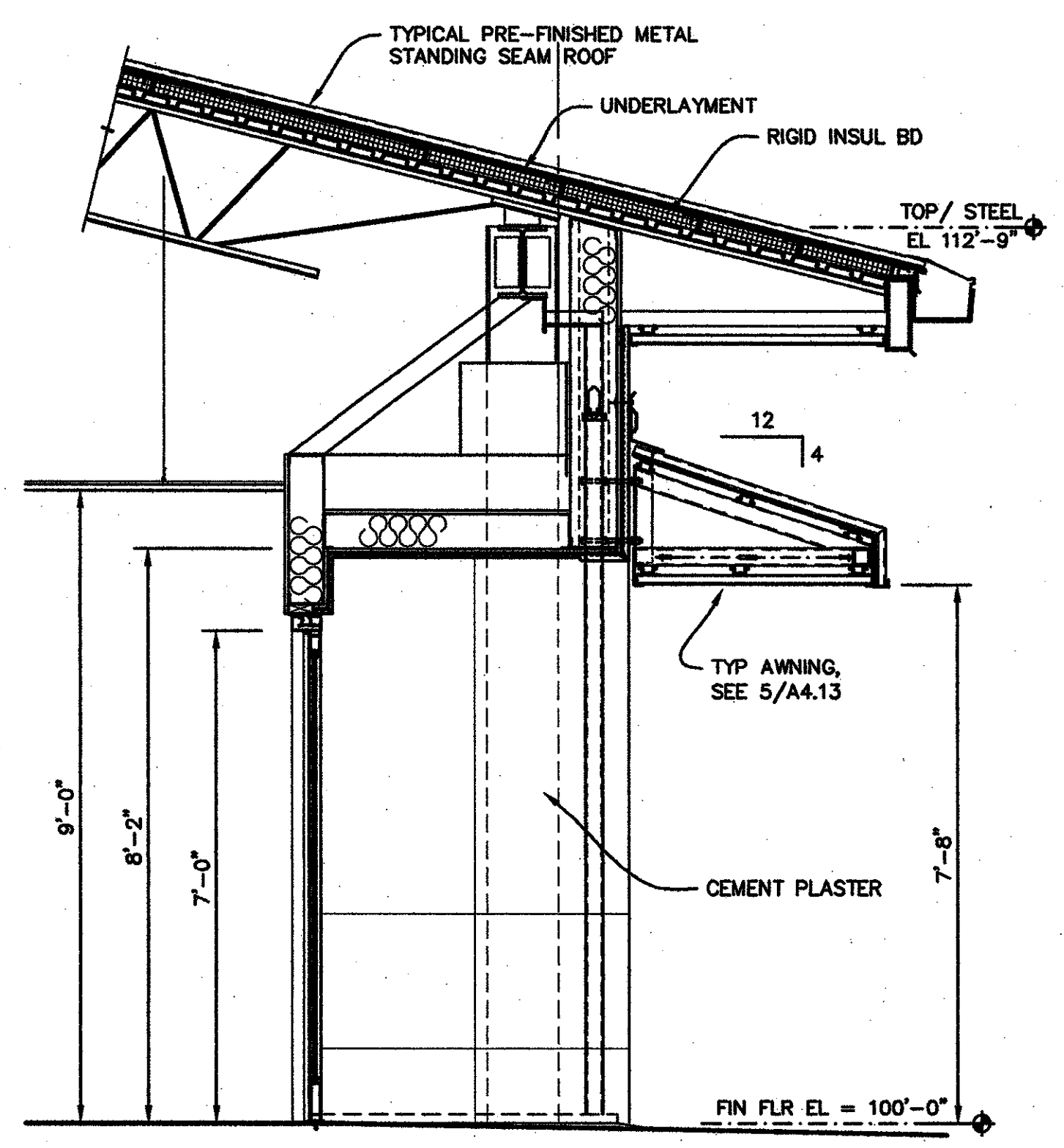
2 TYPICAL @ FAUX COLUMN
 1/2" = 1'-0"



3 TYPICAL @ COL ROW 'G'
 1/2" = 1'-0"



5 TYP SECTION @ AWNING
 1/2" = 1'-0"



4 TYP SECTION @ AWNING
 1/2" = 1'-0"