

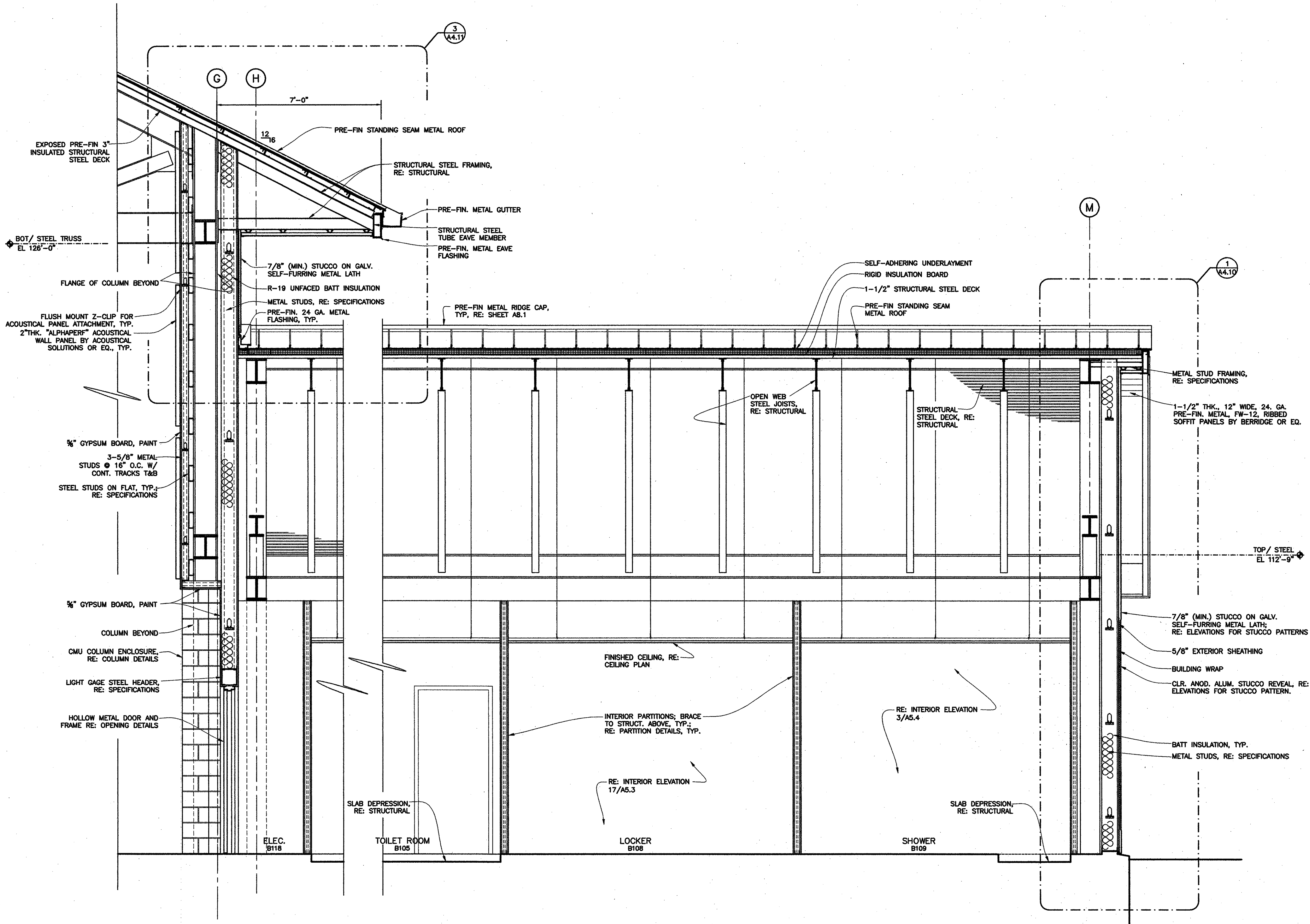
project no. 20-0901
 drawn ENG
 checked JJP
 date 01.15.2010
 revised



MEYER ENGINEERS, LTD.
ENGINEER & ARCHITECT

ENLARGED BUILDING SECTIONS
VAL RISS PARK
MULTI-PURPOSE BUILDING
ST. BERNARD PARISH, OWNER

sheet no. **A4.3**
 of ___ sheets



1
 A4.2 A4.3

ENLARGED PARTIAL BUILDING SECTION

1/2" = 1'-0"