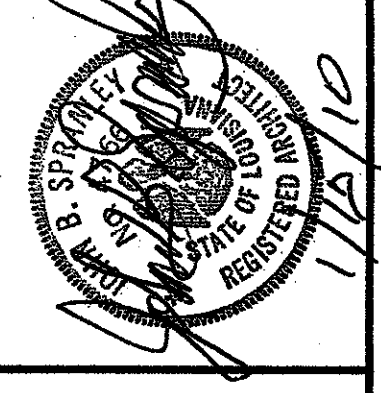


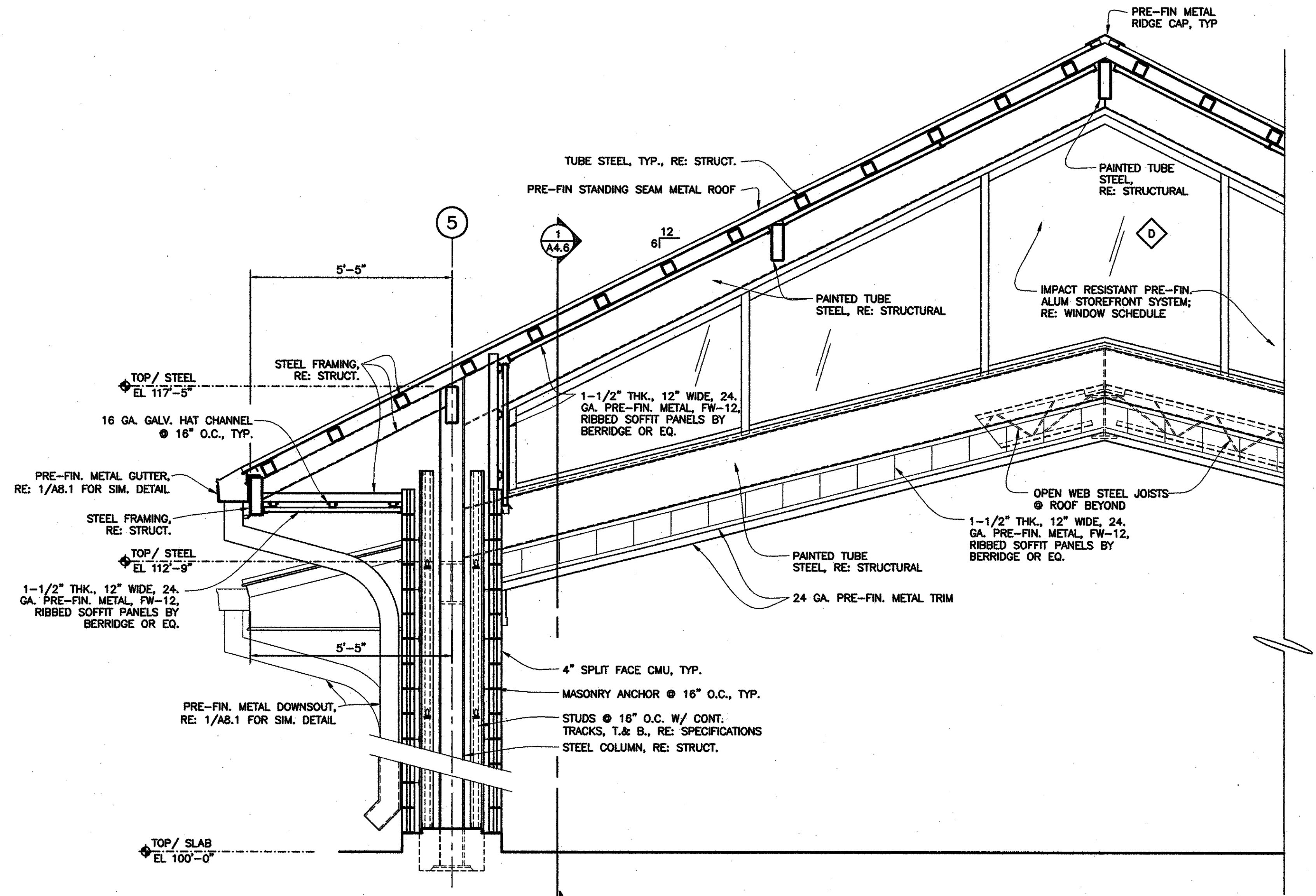
project no.	20-0901
drawn	ENG
checked	JJP
date	01.15.2010
revised	



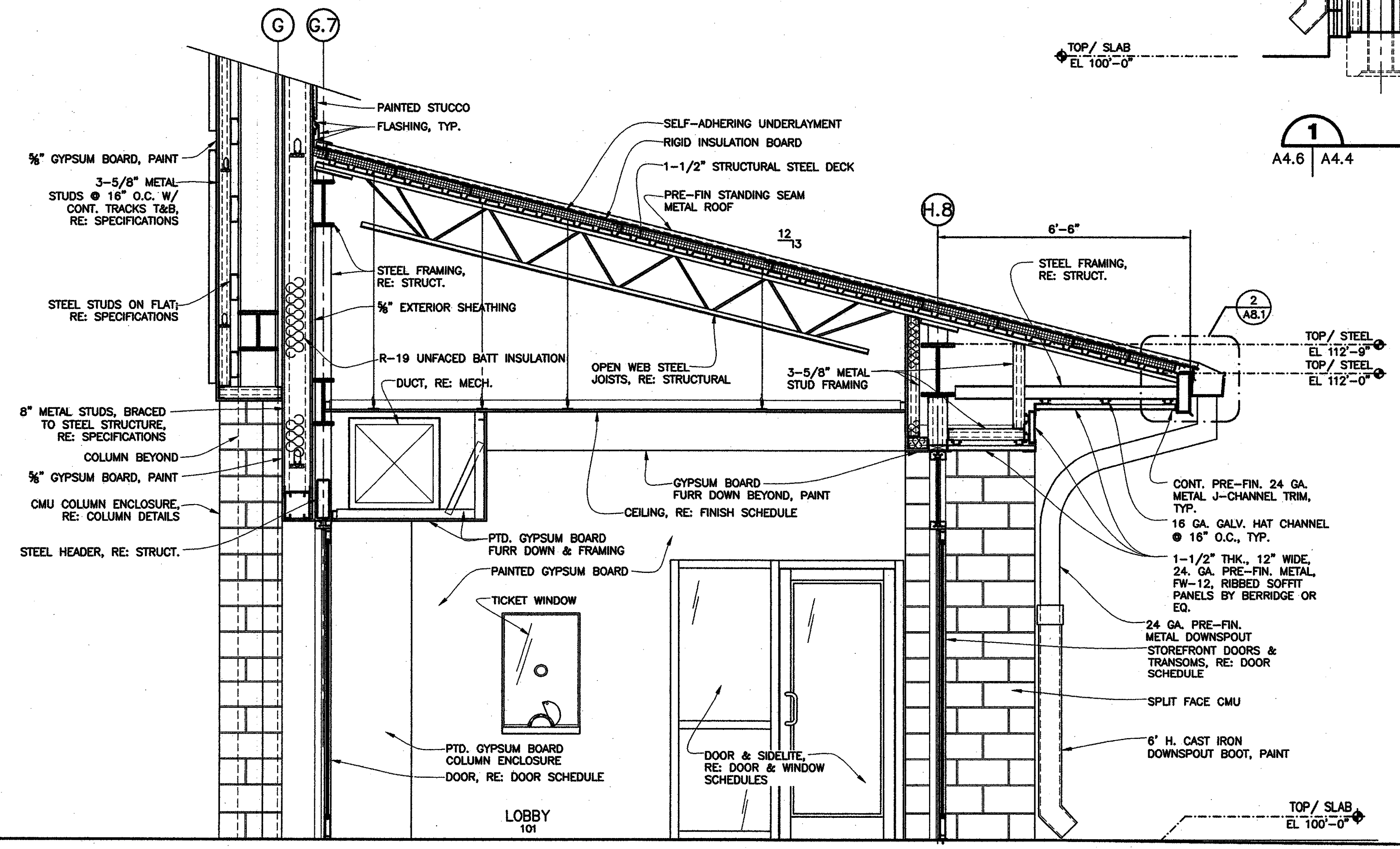
MEYER ENGINEERS, LTD.
ENGINEER & ARCHITECT

ENLARGED BUILDING SECTIONS
VAL RISS PARK
MULTI-PURPOSE BUILDING
ST. BERNARD PARISH, OWNER

sheet no.
A4.4
of ___ sheets



ENLARGED PARTIAL BUILDING SECTION 1
1/2" = 1'-0"



ENLARGED PARTIAL BUILDING SECTION 2
1/2" = 1'-0"