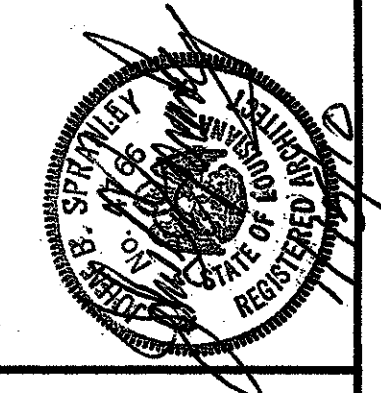


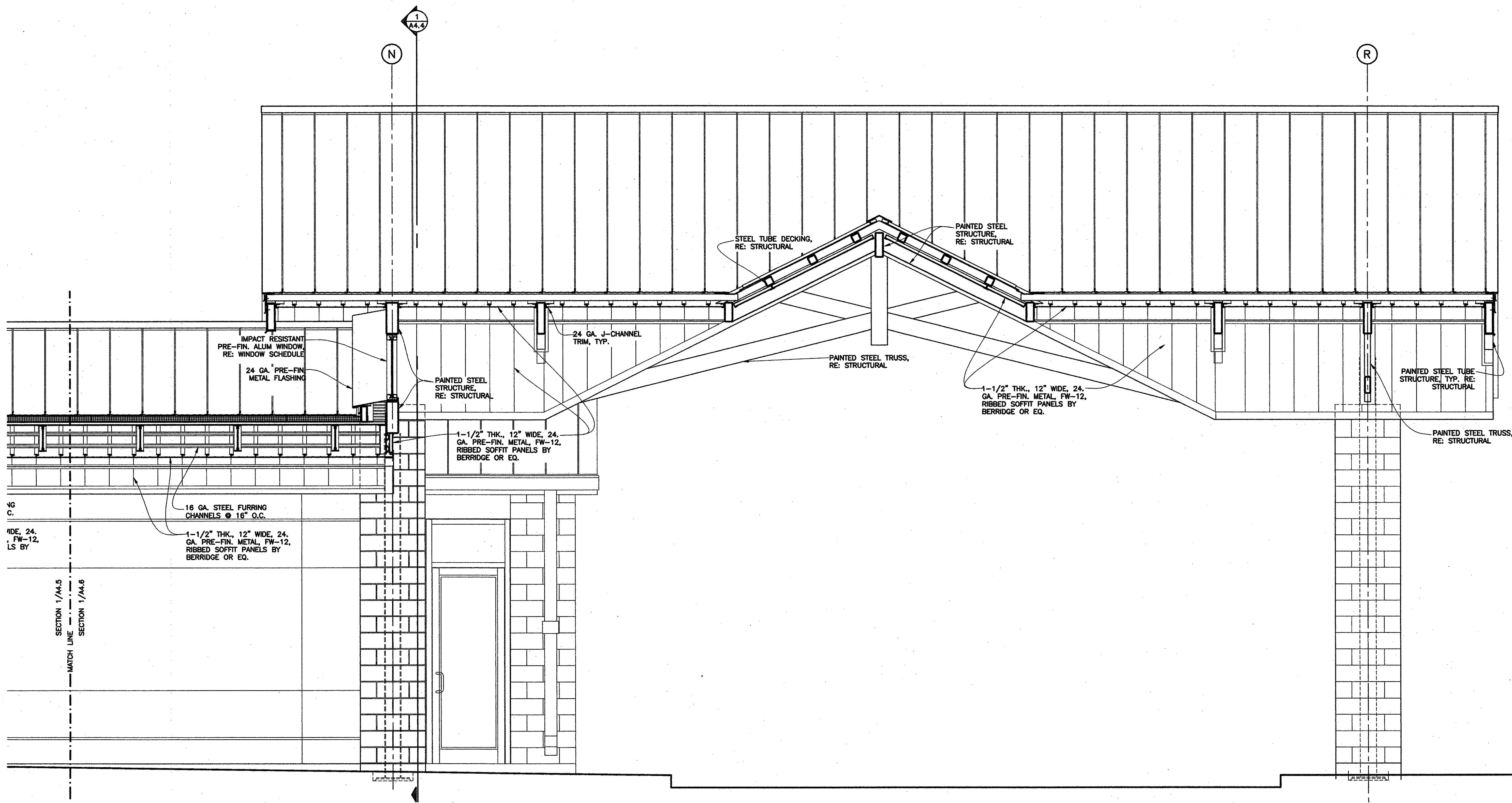
project no. 20-0901
 drawn ENG
 checked JJP
 date 01.15.2010
 revised



MEYER ENGINEERS, LTD.
 ENGINEER & ARCHITECT

BUILDING SECTIONS
 VAL RISS PARK
 MULTI-PURPOSE BUILDING
 ST. BERNARD PARISH, OWNER

sheet no.
A46
 of ___ sheets



1
A4.5 | A4.6

ENLARGED PARTIAL BUILDING SECTION

1/2" = 1'-0"