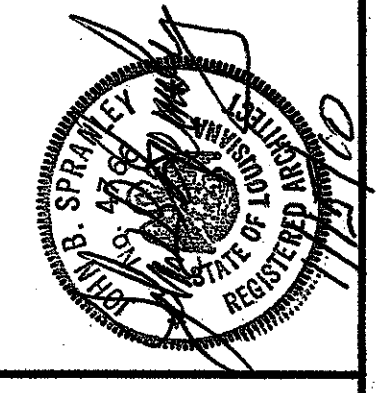


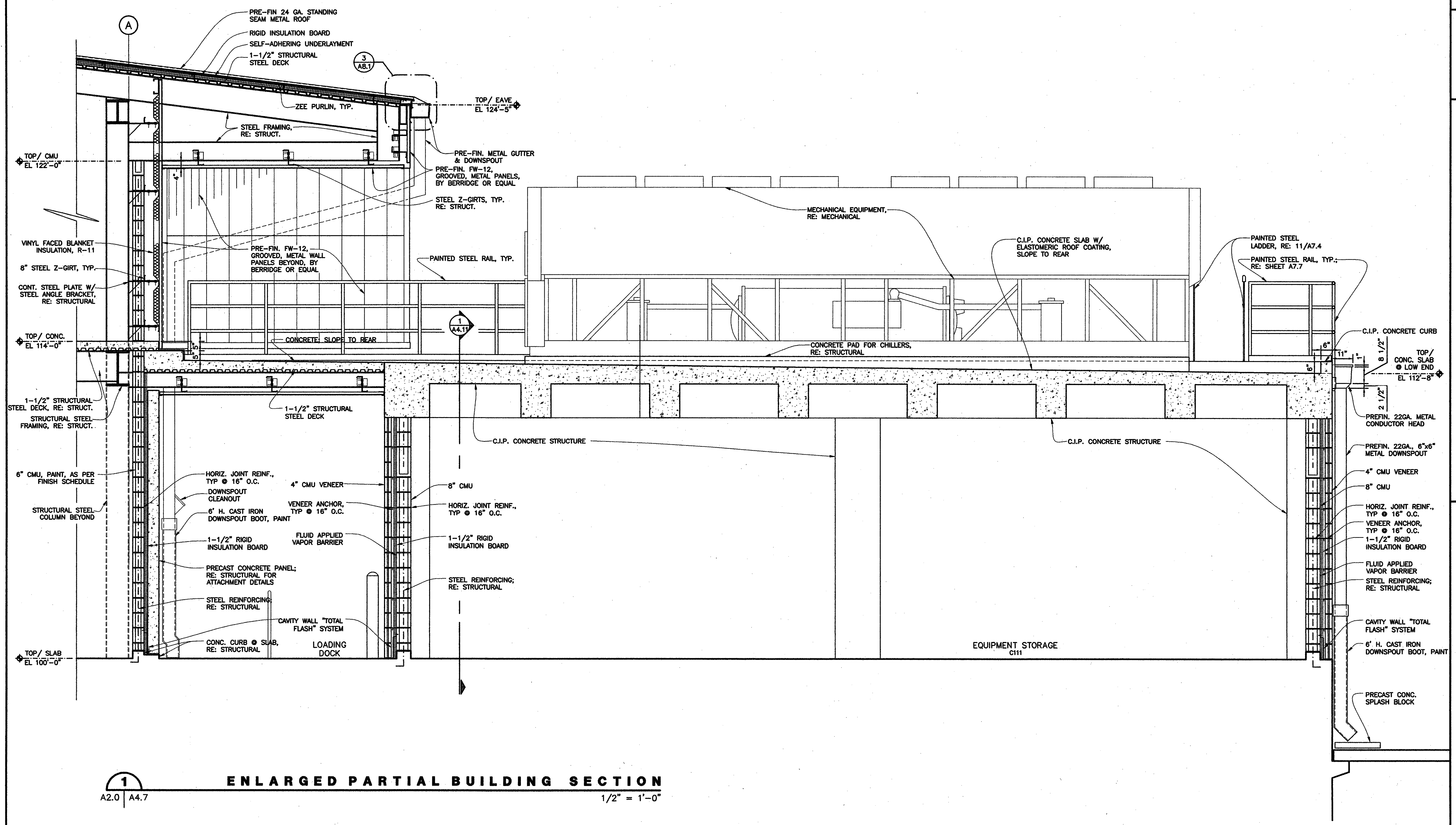
project no. 20-0901
 drawn ENG
 checked JJP
 date 01.15.2010
 revised



MEYER ENGINEERS, LTD.
 ENGINEER & ARCHITECT

ENLARGED BUILDING SECTIONS
VAL RIESS PARK
MULTI-PURPOSE BUILDING
ST. BERNARD PARISH, OWNER

sheet no.
A4.7
 of ___ sheets



1
 A2.0 | A4.7
ENLARGED PARTIAL BUILDING SECTION
 1/2" = 1'-0"