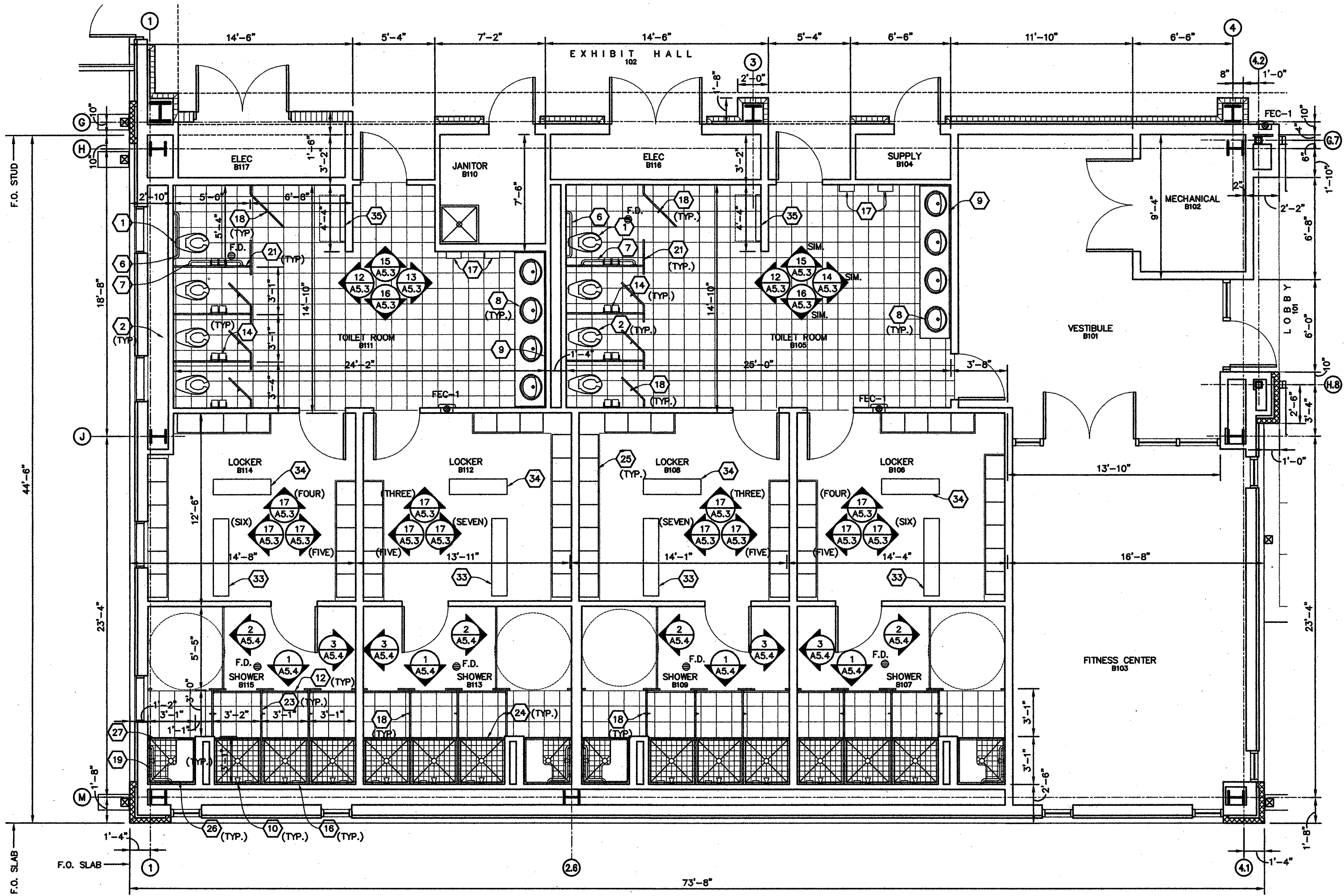


**1 (ALTERNATE No 2) OFFICIALS TOILET ROOM**  
 A2.0/A5.0 20-0901PFO1.dwg 1/4" = 1'-0"

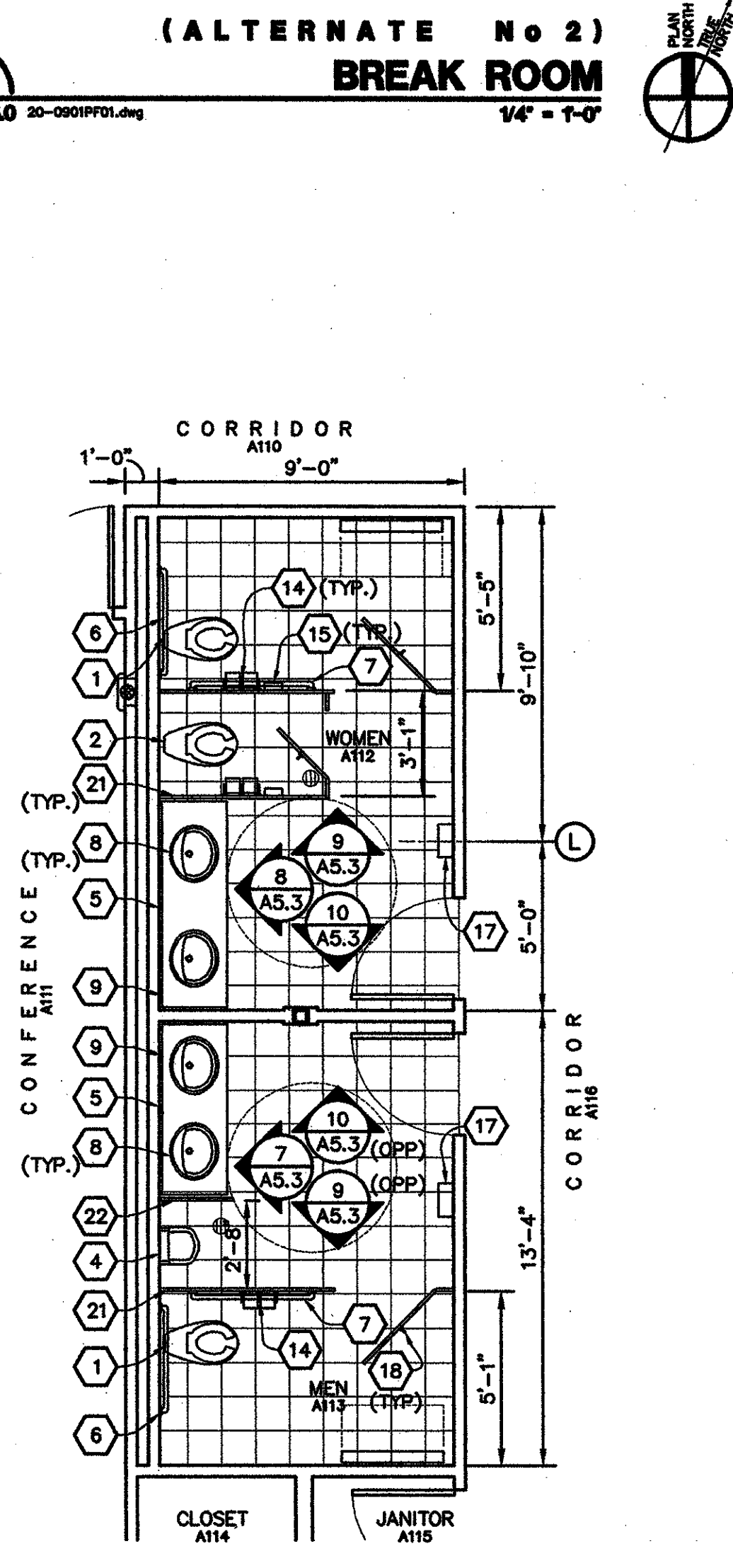
**2 (ALTERNATE No 2) DIRECTOR'S TOILET ROOM**  
 A2.0/A5.0 20-0901PFO1.dwg 1/4" = 1'-0"

**3 (ALTERNATE No 2) CONFERENCE ROOM KITCHEN**  
 A2.0/A5.0 20-0901PFO1.dwg 1/4" = 1'-0"

**4 (ALTERNATE No 2) BREAK ROOM**  
 A2.0/A5.0 20-0901PFO1.dwg 1/4" = 1'-0"



**5 (BASE BID) AREA "B" ENLARGED PLAN**  
 A2.0/A5.0 20-0901PFO1.dwg 1/4" = 1'-0"



**6 (ALTERNATE No 2) AREA "A" MEN'S AND WOMEN'S TOILET ROOMS**  
 A2.0/A5.0 20-0901PFO1.dwg 1/4" = 1'-0"

- KEYNOTES**
- 1 ADA FLOOR-MOUNTED TOILET
  - 2 FLOOR-MOUNTED TOILET
  - 3 URINAL
  - 4 ADA URINAL
  - 5 MIRROR (SEE INTERIOR ELEVS.)
  - 6 36" GRAB BAR
  - 7 42" GRAB BAR
  - 8 COUNTER MOUNTED LAVATORY WITH FAUCET
  - 9 P. LAM. COUNTER & BACKSLASH
  - 10 SHOWER HEAD
  - 11 SOAP DISPENSER
  - 12 SHOWER CURTAIN ROD
  - 13 SHOWER HANDLE
  - 14 TOILET PAPER DISPENSER
  - 15 FEMININE NAPKIN DISPOSAL
  - 16 RECESSED SOAP DISH
  - 17 ADA COMPLIANT ELECTRIC HAND DRYER
  - 18 COAT HOOK WITH BUMPER
  - 19 L-SHAPED GRAB BAR (SEE SPEC.)
  - 20 4" RUBBER BASE
  - 21 SOLID PHENOLIC TOILET PARTITION (SEE SPEC.)
  - 22 SOLID PHENOLIC URINAL PARTITION (SEE SPEC.)
  - 23 SOLID PHENOLIC SHOWER DIVIDERS (SEE SPEC.)
  - 24 3" SHOWER CURB
  - 25 SOLID PLASTIC LOCKER ON 4" CONC. CURB (SEE SPEC.)
  - 26 ADA FOLDING SHOWER SEAT (SEE SPEC.)
  - 27 NO CURB ROLL IN SHOWER
  - 28 REFRIGERATOR
  - 29 ICE MAKER
  - 30 TWO-COMPARTMENT SINK
  - 31 HORIZONTAL THREE-WALL GRAB BAR, 24"x54"x24"
  - 32 DISHWASHER
  - 33 60 INCH LOCKER BENCH
  - 34 45 INCH LOCKER BENCH
  - 35 WALL MOUNTED BABY CHANGING STATION (SEE SPEC.)
  - 36 PAPER TOWEL HOLDER
  - 37 NOT USED
  - 38 S.S. ROLL-UP SHUTTER
  - 39 WATER DRINKING FOUNTAIN
  - 40 MICROWAVE (BY OWNER)
  - 41 GYP. BOARD FURR DOWN
  - 42 4" PORCELAIN COVE BASE
  - 43 12" x 12" PORCELAIN TILE

project no. 20-0901  
 drawn JBS, JDR  
 checked JJP  
 date 01.15.2010  
 revised

**MEYER ENGINEERS, LTD.**  
 ENGINEER & ARCHITECT

**ENLARGED PLANS**  
 VAL RISS PARK  
 MULTI-PURPOSE BUILDING  
 ST. BERNARD PARISH, OWNER

sheet no.  
**A5.0**  
 of \_\_\_ sheets