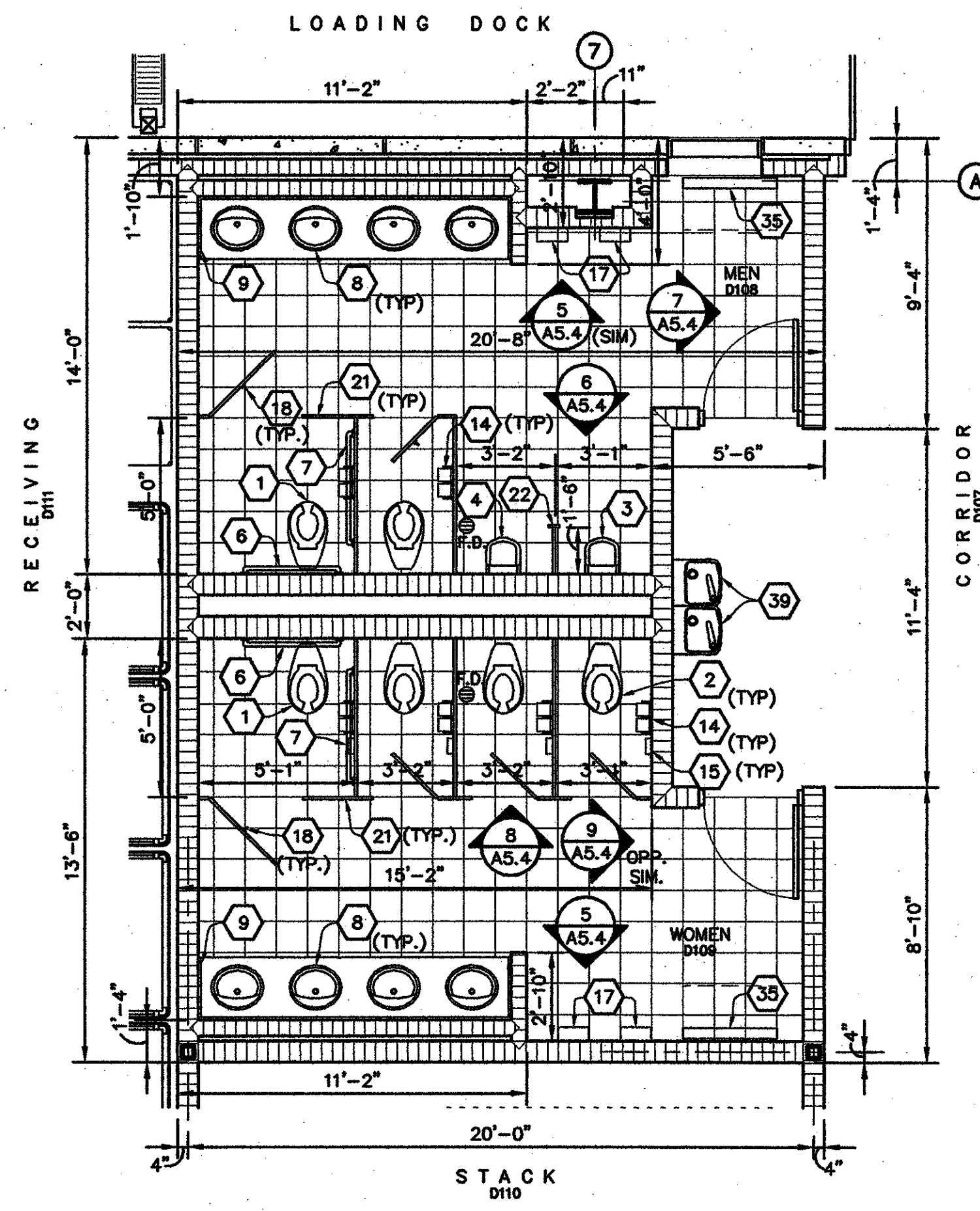
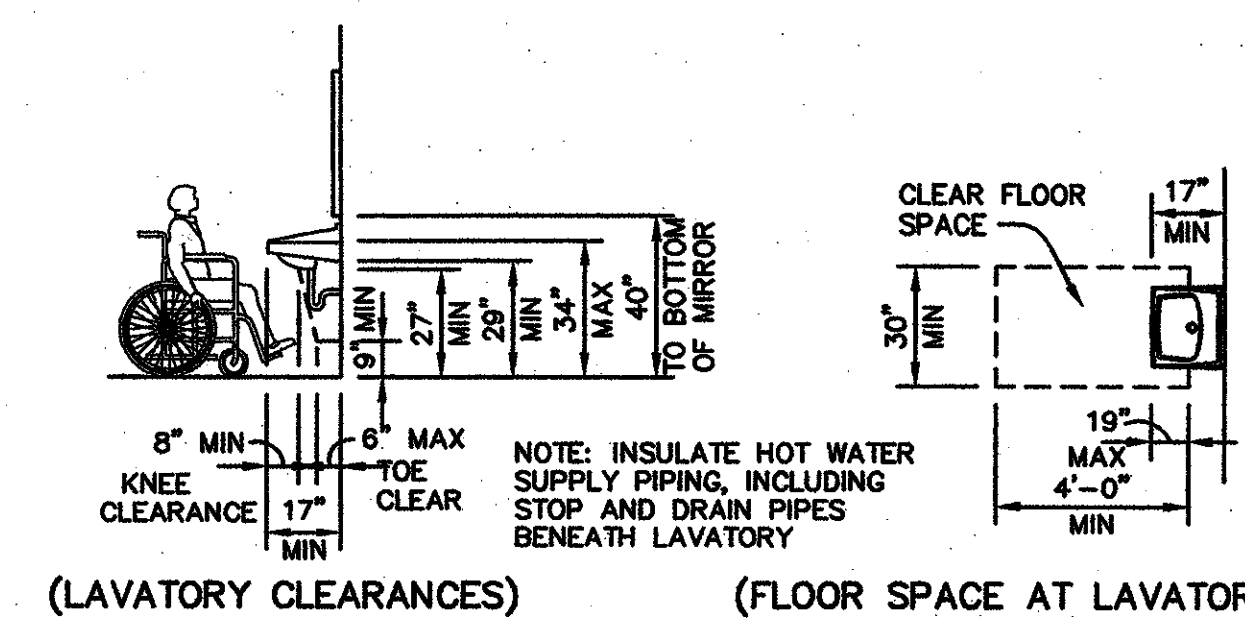


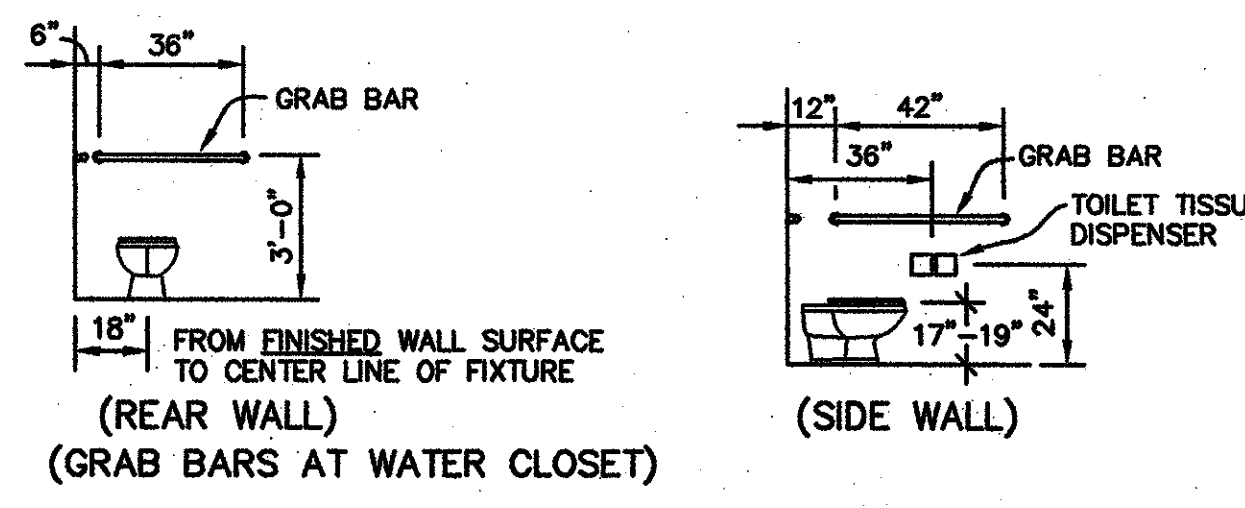
1 AREA "C" ENLARGED PLAN
 (BASE BID)
 A2.0 | A5.1 20-0901PFD1.dwg 1/4" = 1'-0"



2 AREA "D" ENLARGED PLAN
 (BASE BID)
 A2.0 | A5.1 20-0901PFD1.dwg 1/4" = 1'-0"

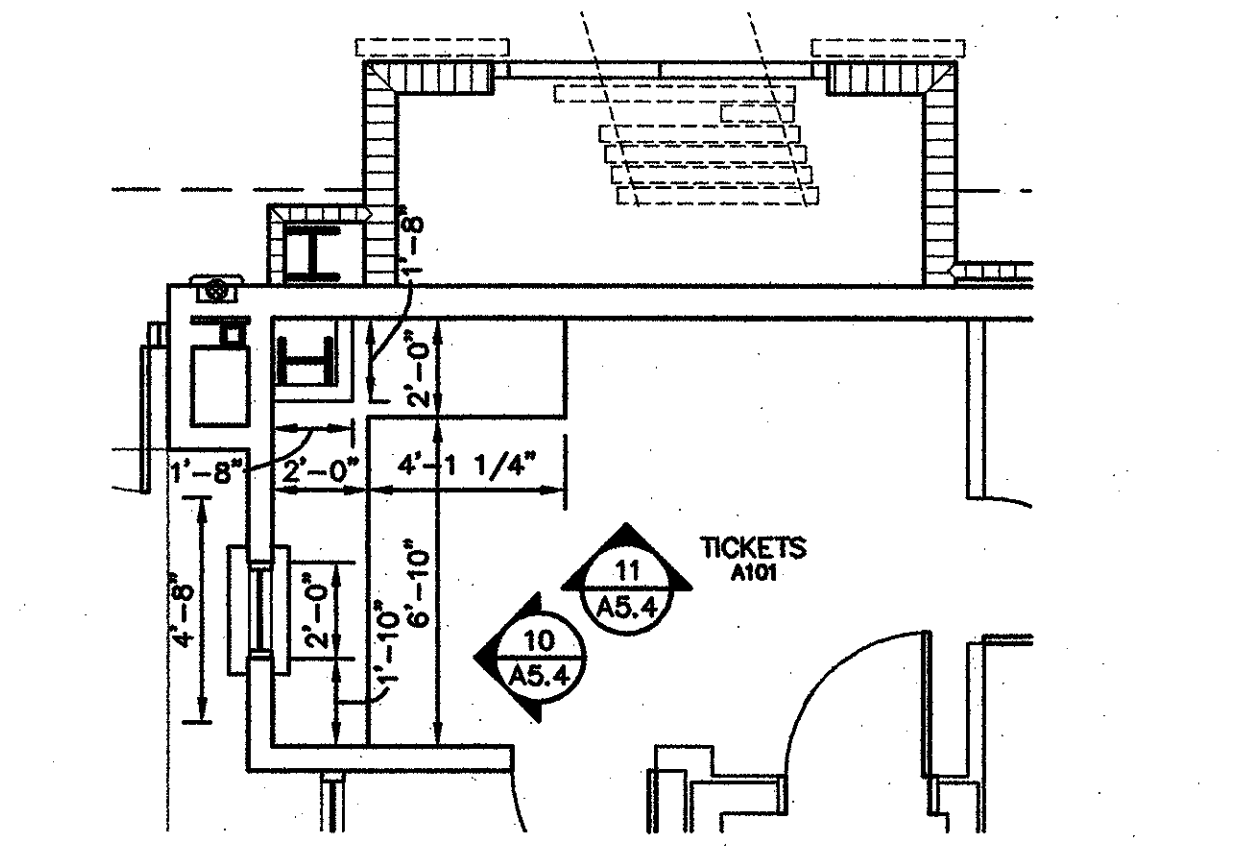


(LAVATORY CLEARANCES) (FLOOR SPACE AT LAVATORY)



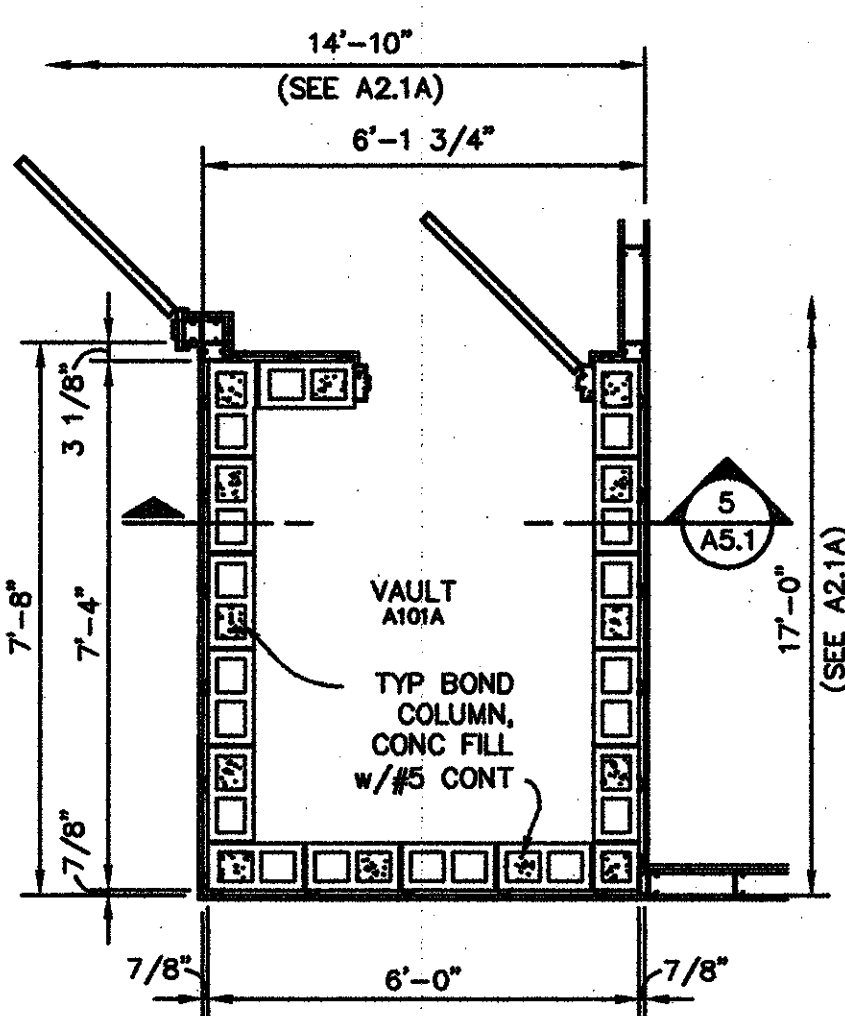
(REAR WALL) (SIDE WALL)
 (GRAB BARS AT WATER CLOSET)

3 ACCESSIBLE FIXTURES
 STD | A5.1 1/4" = 1'-0"

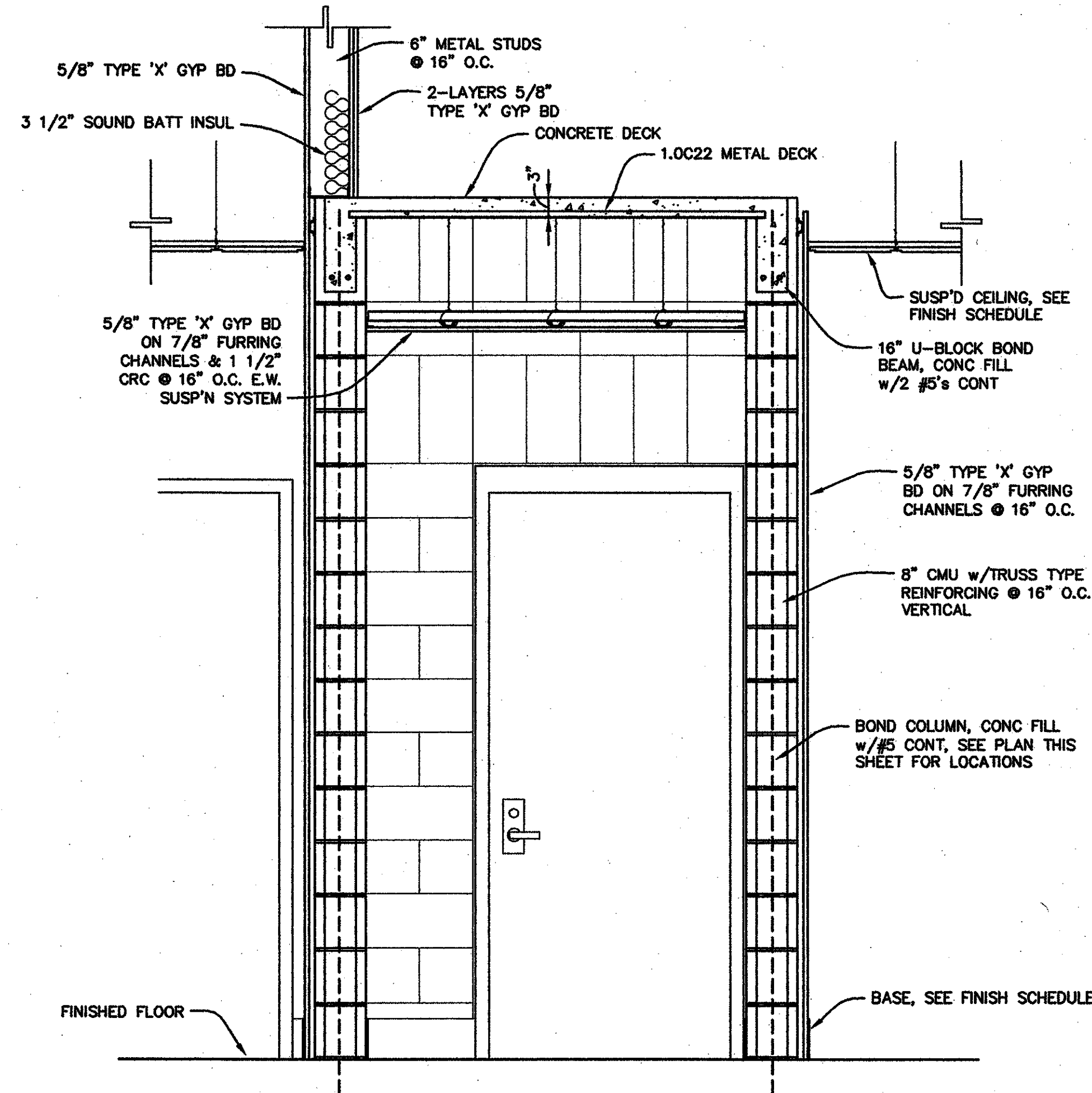


6 AREA "A" TICKET A101 PLAN
 (ALTERNATE No 2)
 A2.0 | A5.1 20-0901PFD1.dwg 1/4" = 1'-0"

- KEYNOTES**
- 1 ADA FLOOR-MOUNTED TOILET
 - 2 FLOOR-MOUNTED TOILET
 - 3 URINAL
 - 4 ADA URINAL
 - 5 MIRROR (SEE INTERIOR ELEVS.)
 - 6 36" GRAB BAR
 - 7 42" GRAB BAR
 - 8 COUNTER MOUNTED LAVATORY WITH FAUCET
 - 9 P. LAM. COUNTER & BACKSPASH
 - 10 SHOWER HEAD
 - 11 SOAP DISPENSER
 - 12 SHOWER CURTAIN ROD
 - 13 SHOWER HANDLE
 - 14 TOILET PAPER DISPENSER
 - 15 FEMININE NAPKIN DISPOSAL
 - 16 RECESSED SOAP DISH
 - 17 ADA COMPLIANT ELECTRIC HAND DRYER
 - 18 COAT HOOK WITH BUMPER
 - 19 L-SHAPED GRAB BAR (SEE SPEC.)
 - 20 4" RUBBER BASE
 - 21 SOLID PHENOLIC TOILET PARTITION (SEE SPEC.)
 - 22 SOLID PHENOLIC URINAL PARTITION (SEE SPEC.)
 - 23 SOLID PHENOLIC SHOWER DIVIDERS (SEE SPEC.)
 - 24 3" SHOWER CURB
 - 25 SOLID PLASTIC LOCKER ON 4" CONC. CURB (SEE SPEC.)
 - 26 ADA FOLDING SHOWER SEAT (SEE SPEC.)
 - 27 NO CURB ROLL IN SHOWER
 - 28 REFRIGERATOR
 - 29 ICE MAKER
 - 30 TWO-COMPARTMENT SINK
 - 31 HORIZONTAL THREE-WALL GRAB BAR, 24"x54"x24"
 - 32 DISHWASHER
 - 33 60 INCH LOCKER BENCH
 - 34 45 INCH LOCKER BENCH
 - 35 WALL-MOUNTED BABY CHANGING STATION (SEE SPEC.)
 - 36 PAPER TOWEL HOLDER
 - 37 NOT USED
 - 38 S.S. ROLL-UP SHUTTER
 - 39 WATER DRINKING FOUNTAIN
 - 40 MICROWAVE (BY OWNER)
 - 41 GYP. BOARD FURR DOWN
 - 42 4" PORCELAIN COVE BASE
 - 43 12" x 12" PORCELAIN TILE

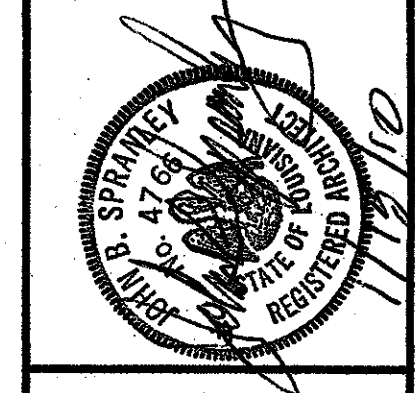


4 AREA "A" VAULT A101A PLAN
 (ALTERNATE No 2)
 A2.1A | A5.1 20-0901PFD1.dwg 3/8" = 1'-0"



5 VAULT A101A SECTION
 (ALTERNATE No 2)
 A5.1 | A5.1 3/4" = 1'-0"

Project no. 20-0901
 JBS, JDR
 drawn
 checked
 date 01.15.2010
 revised



MEYER ENGINEERS, LTD.
 ENGINEER & ARCHITECT

ENLARGED PLANS
 VAL RISS PARK
 MULTI-PURPOSE BUILDING
 ST. BERNARD PARISH, OWNER

sheet no.
A5.1
 of ___ sheets