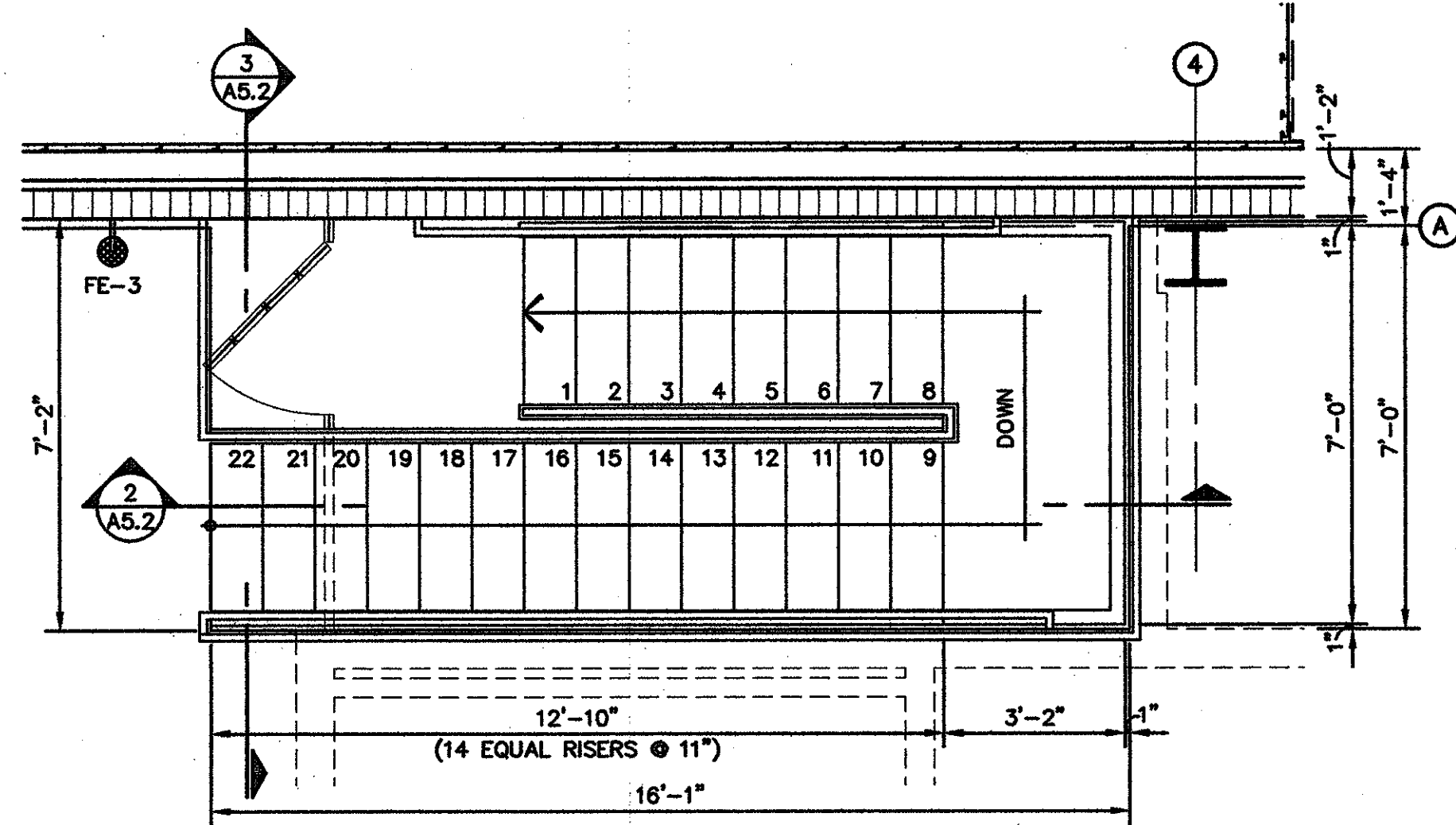
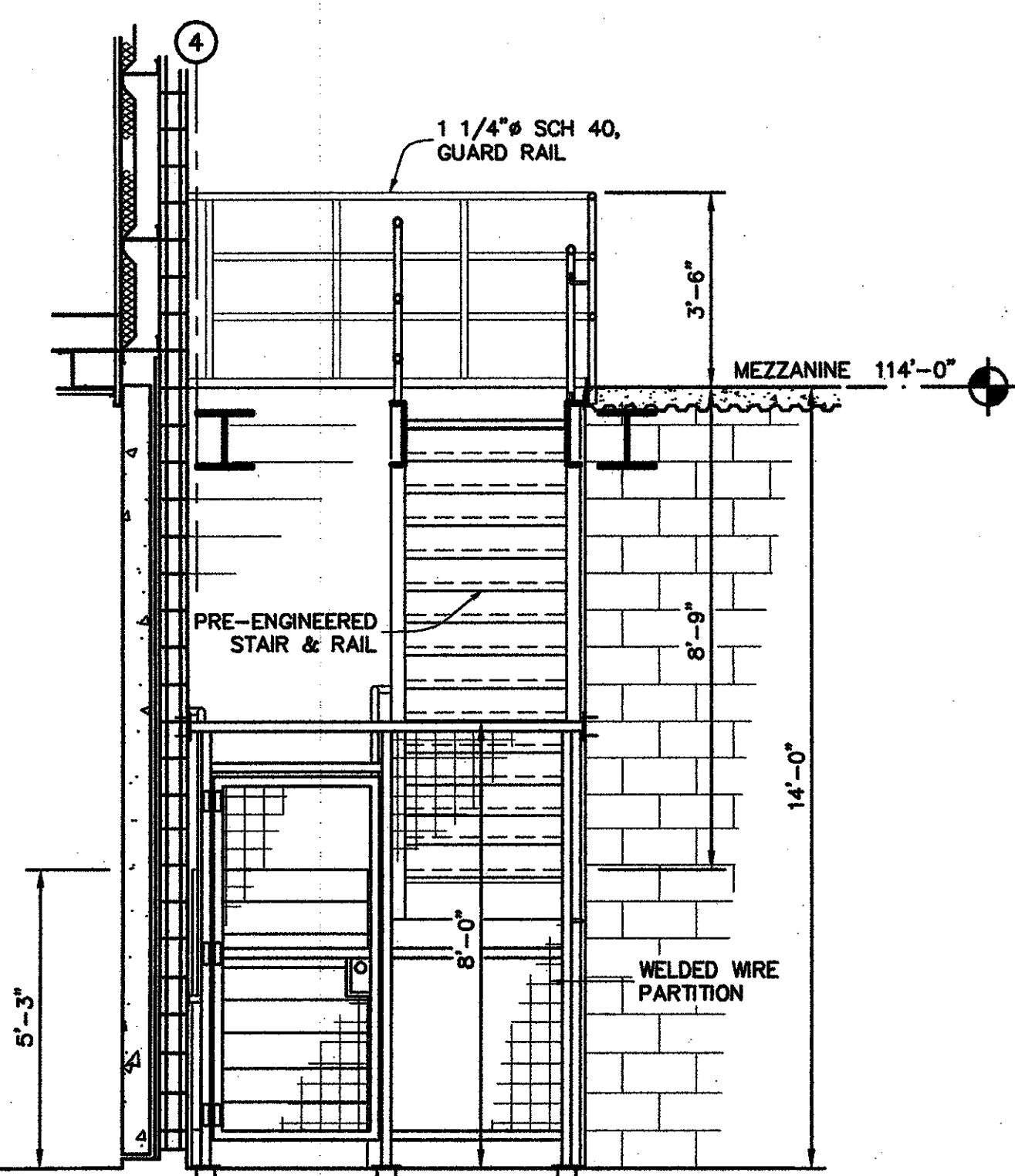


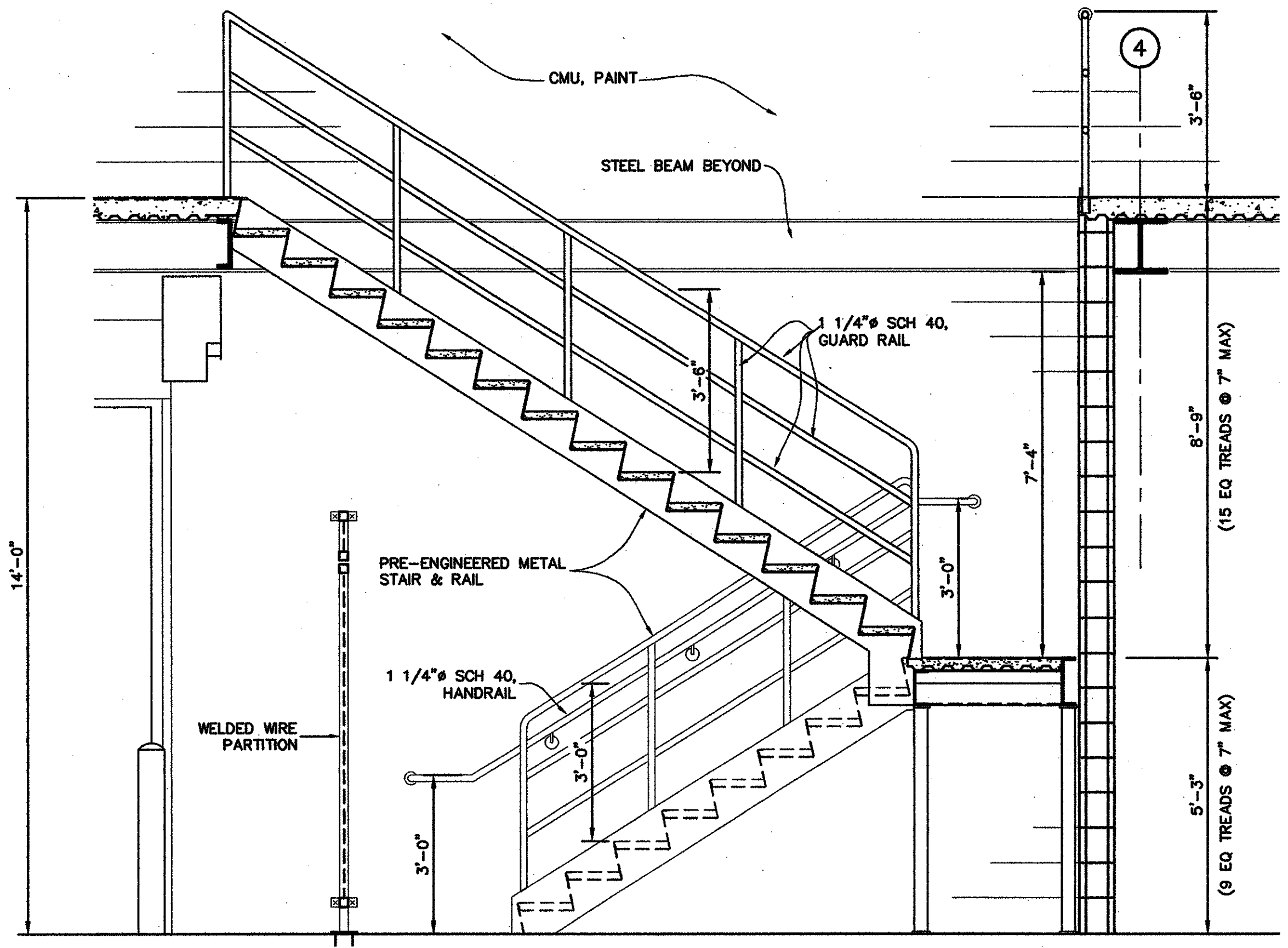
1 FIRST FLOOR STAIR PLAN
A20 | A5.2 20-0801PFO1.dwg
 3/8" = 1'-0"



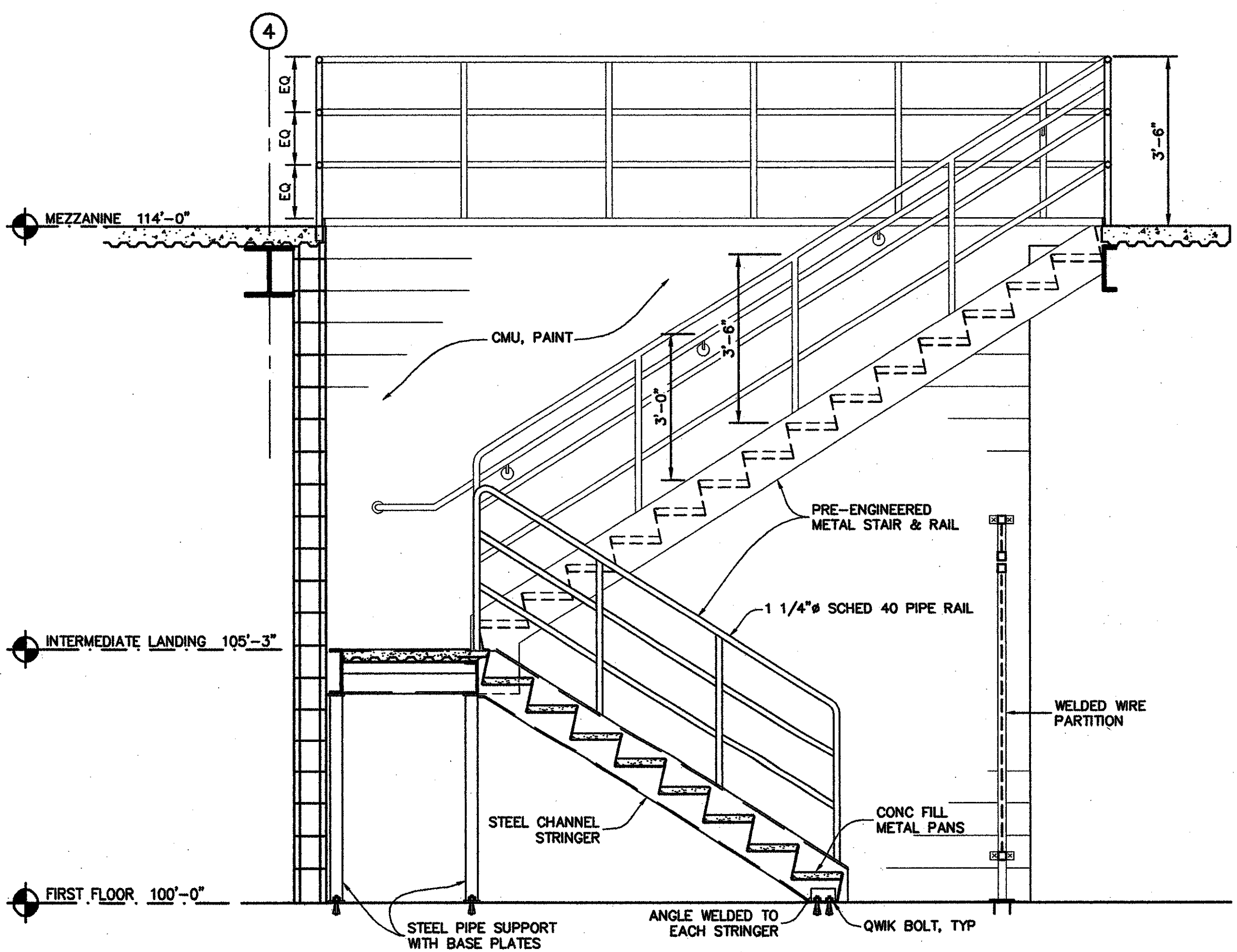
3 MEZZANINE STAIR PLAN
A25 | A5.2 20-0801PFO1.dwg
 3/8" = 1'-0"



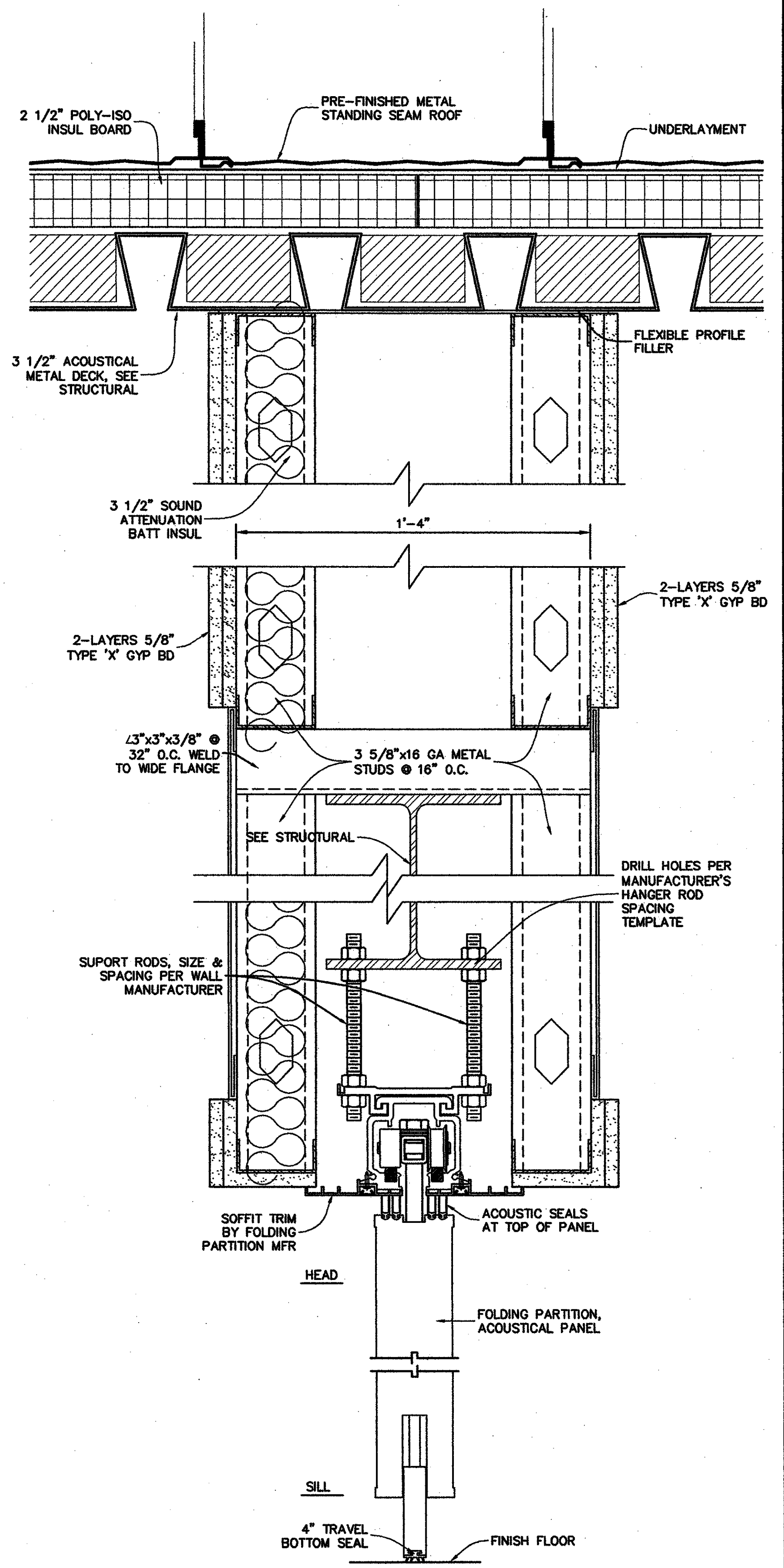
4 STAIR SECTION
A52 | A5.2 20-0801PFO1.dwg
 3/8" = 1'-0"



2 STAIR SECTION
A52 | A5.2 20-0801PFO1.dwg
 1/2" = 1'-0"

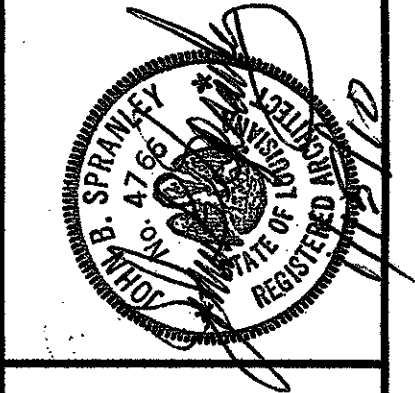


4 STAIR SECTION
A52 | A5.2 20-0801PFO1.dwg
 1/2" = 1'-0"



5 HEAD & SILL DETAIL OPERABLE WALL
A20 | A5.2 20-0801PFO1.dwg
 3" = 1'-0"

project no.	20-0901
drawn	JBS, JDR
checked	JUP
date	01.15.2010
revised	



MEYER ENGINEERS, LTD.
 ENGINEER & ARCHITECT

INTERIOR STAIR PLANS AND DETAILS
VAL RIESS PARK
 MULTI-PURPOSE BUILDING
 ST. BERNARD PARISH, OWNER

sheet no.
A5.2
 of ___ sheets