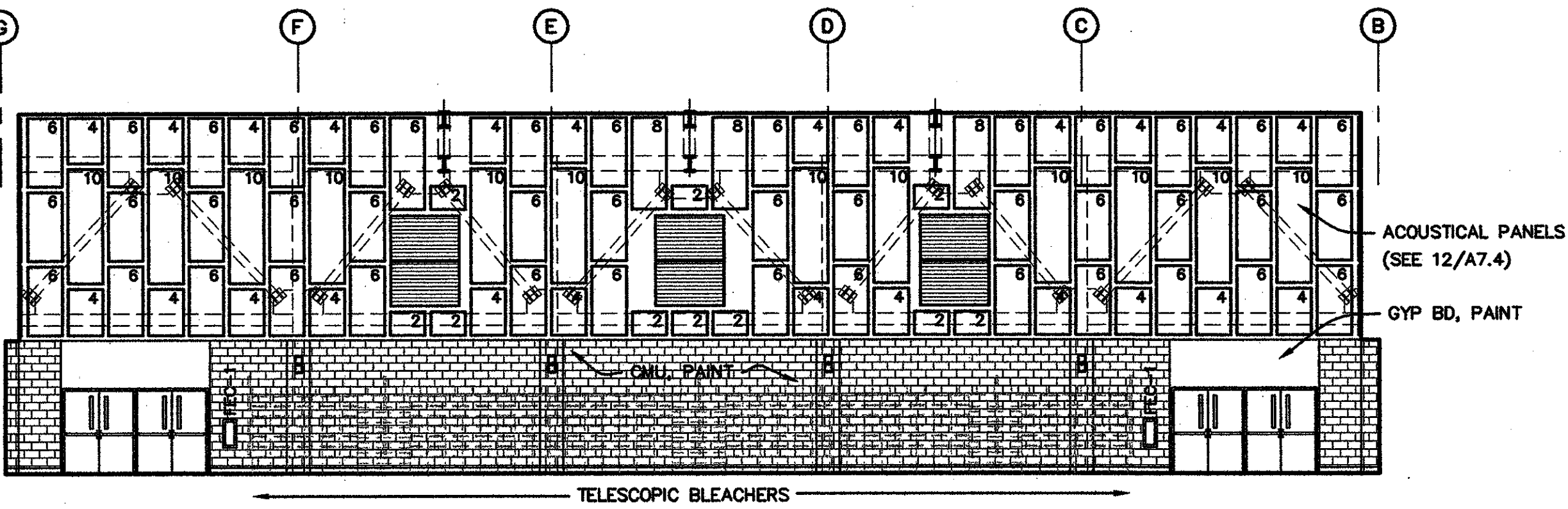
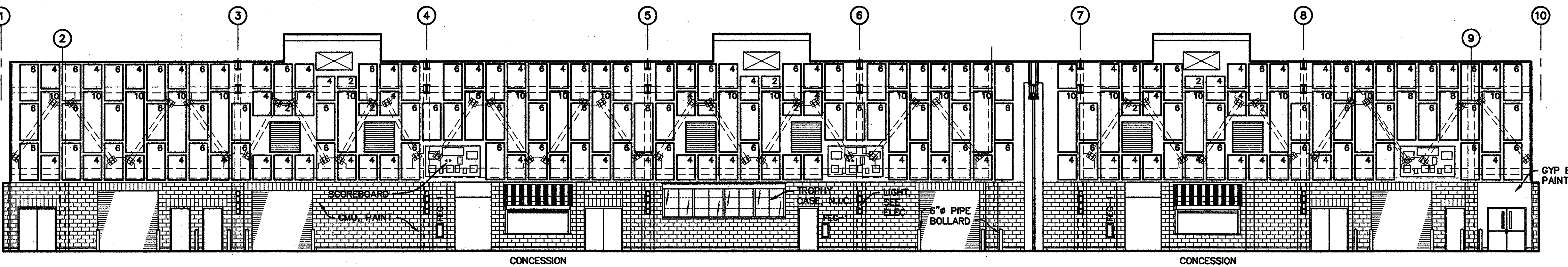
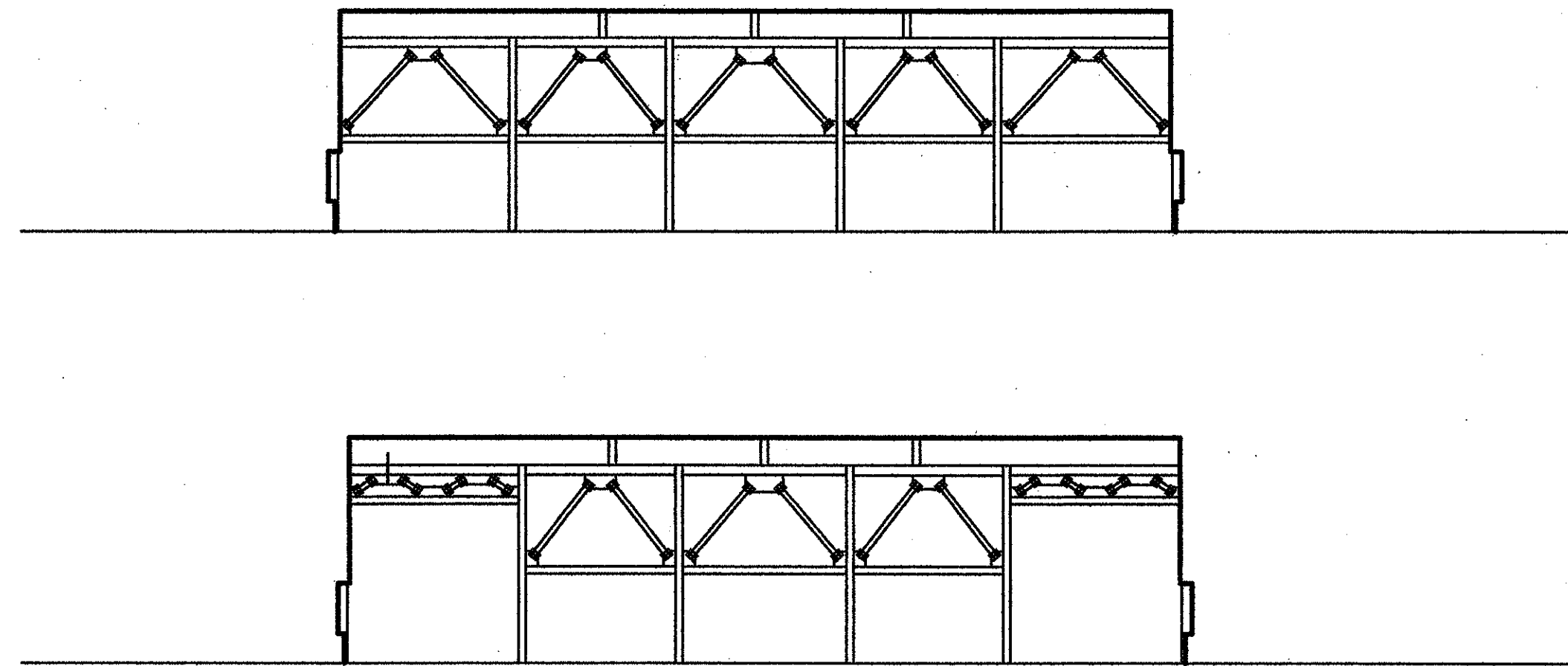


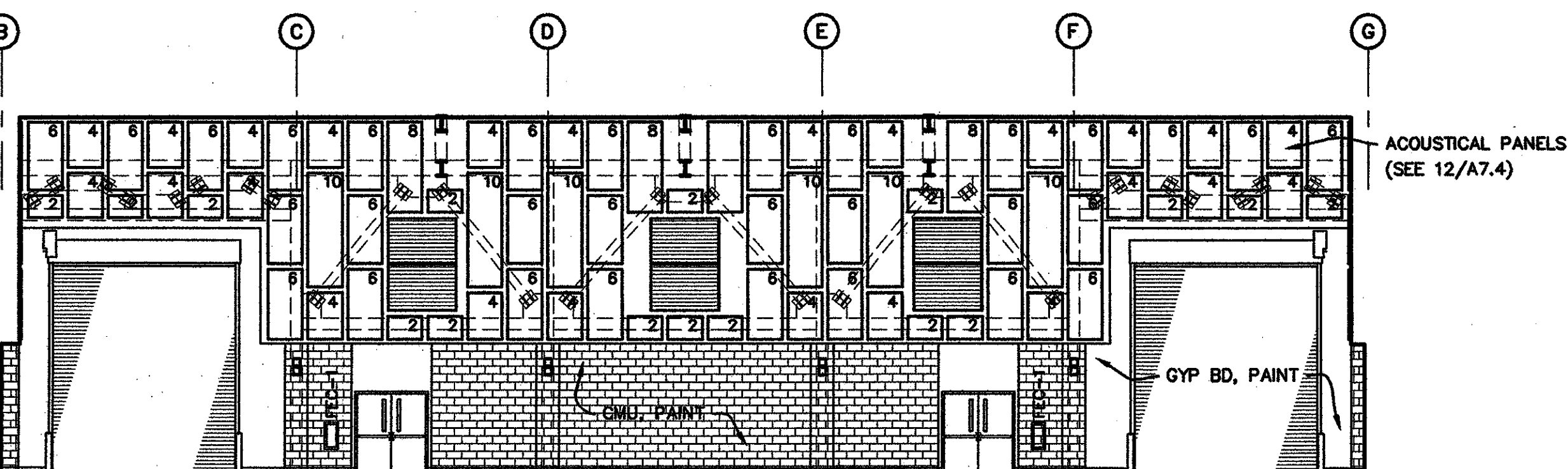
**1 SOUTH INTERIOR ELEVATION**  
A2.0 | A5.5 20-0901E01.dwg 3/32'-1'-0"



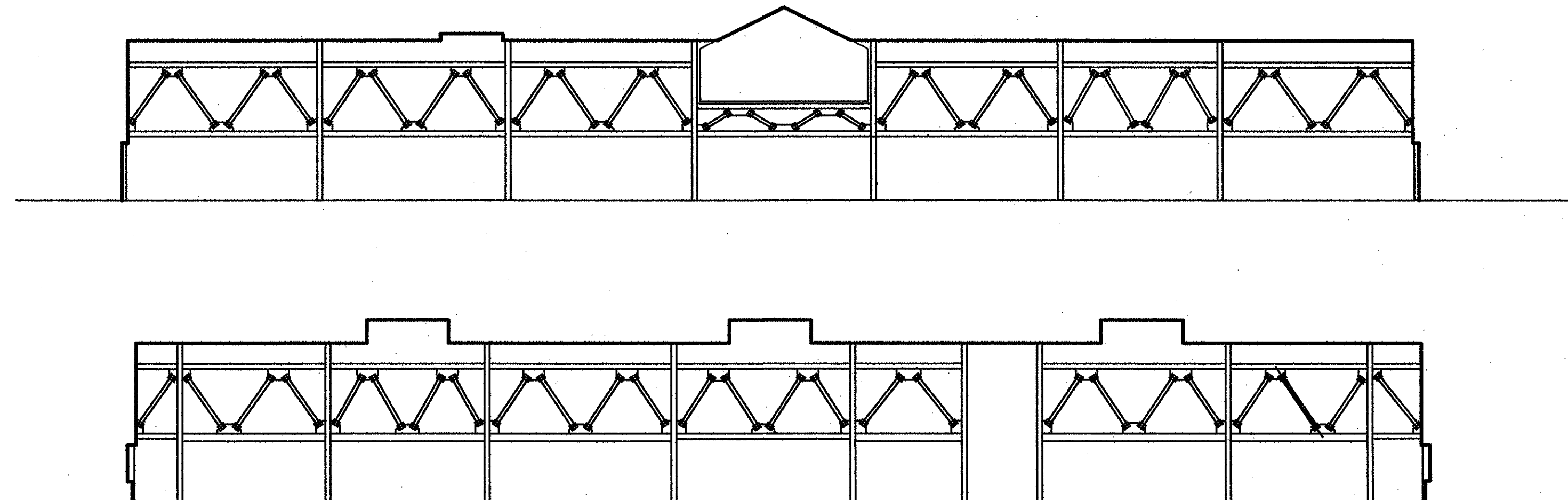
**2 WEST INTERIOR ELEVATION**  
A2.0 | A5.5 20-0901E01.dwg 3/32'-1'-0"



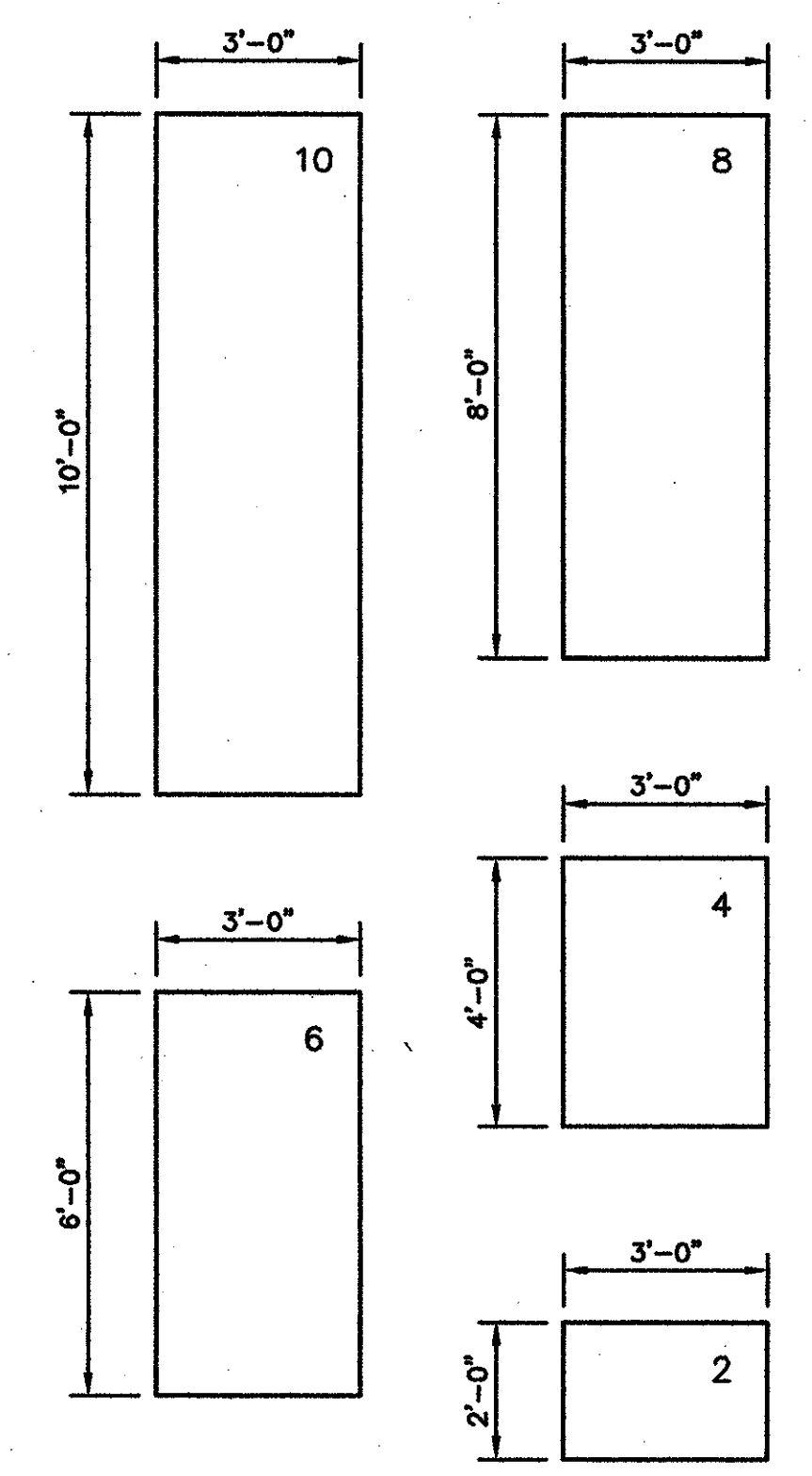
**3 NORTH INTERIOR ELEVATION**  
A2.0 | A5.5 20-0901E01.dwg 3/32'-1'-0"



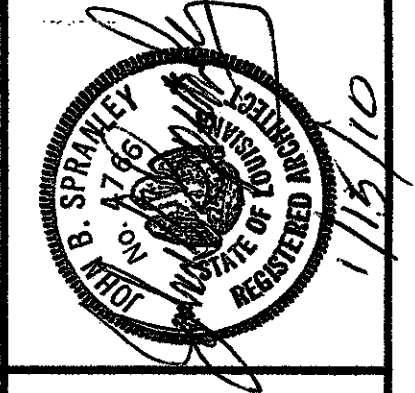
**4 EAST INTERIOR ELEVATION**  
A2.0 | A5.5 20-0901E01.dwg 3/32'-1'-0"



**ACOUSTICAL PANEL KEY:**



project no. 20-0901  
 draw LED  
 checked JJP  
 date 01.15.2010  
 revised



**MEYER ENGINEERS, LTD.**  
 ENGINEER & ARCHITECT

**INTERIOR ELEVATIONS**  
 VAL RISS PARK  
 MULTI-PURPOSE BUILDING  
 ST. BERNARD PARISH, OWNER

sheet no. **A5.5**  
 of \_\_\_ sheets