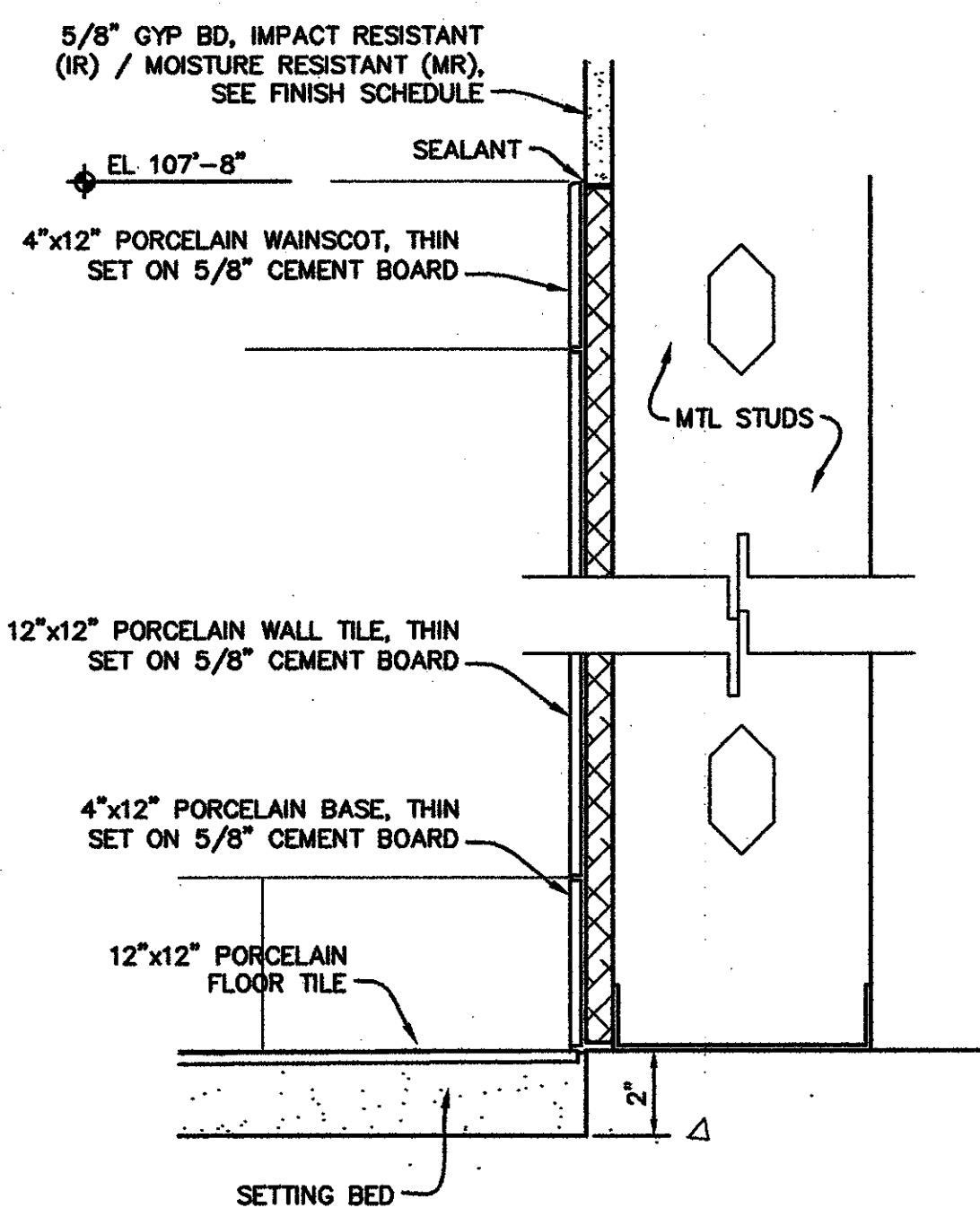
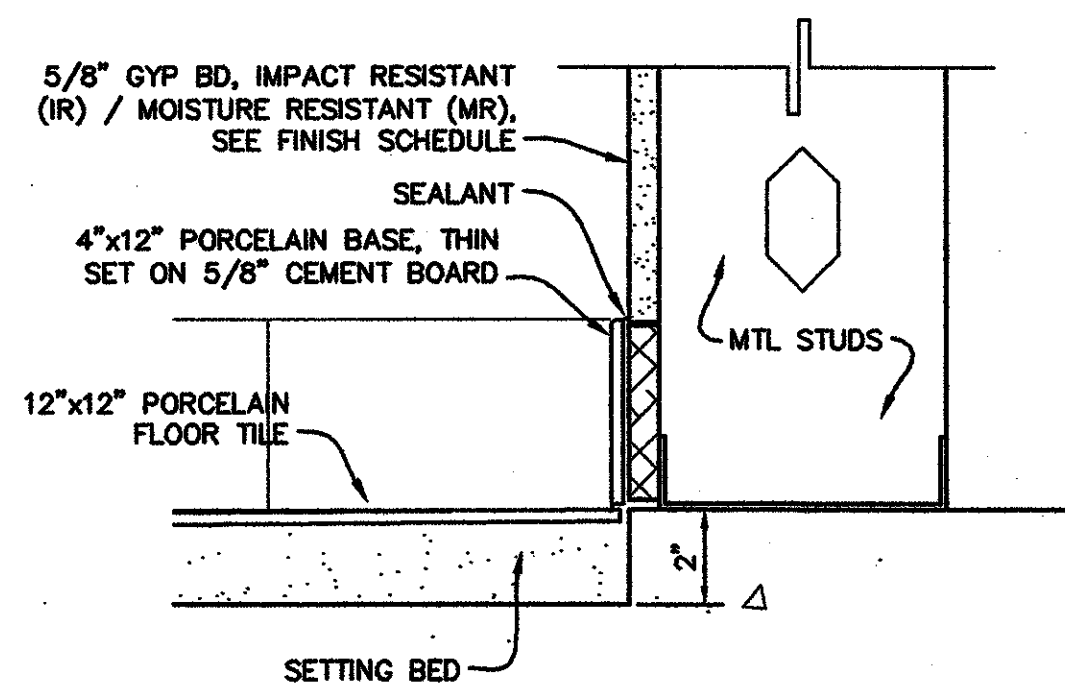


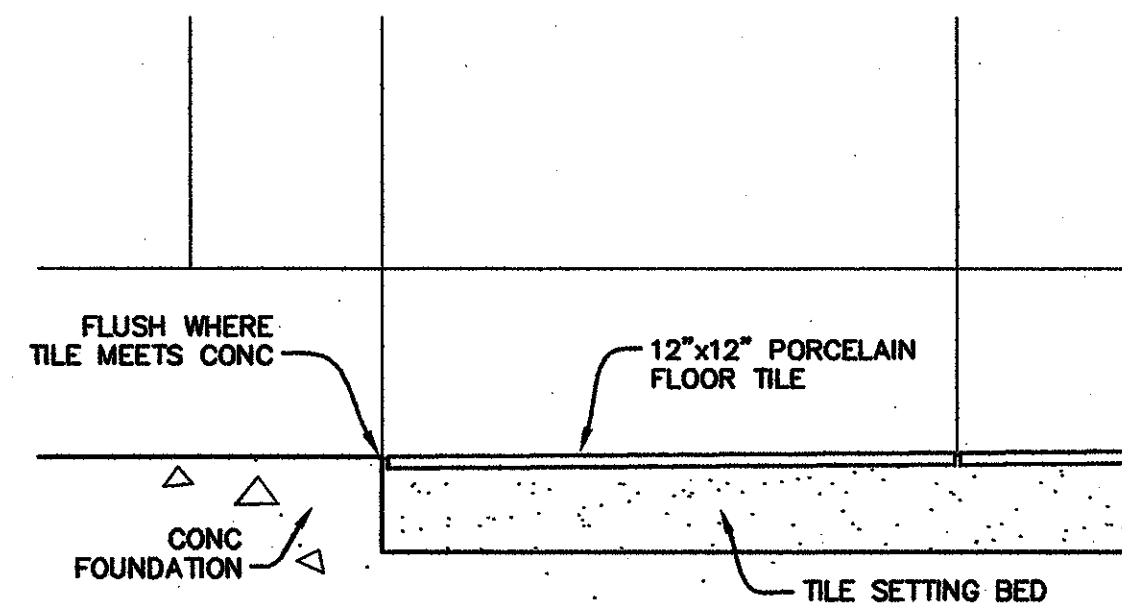
2 PORCELAIN TILE @ SHOWER
A7.5 | A7.5 1 1/2" x 1'-0"



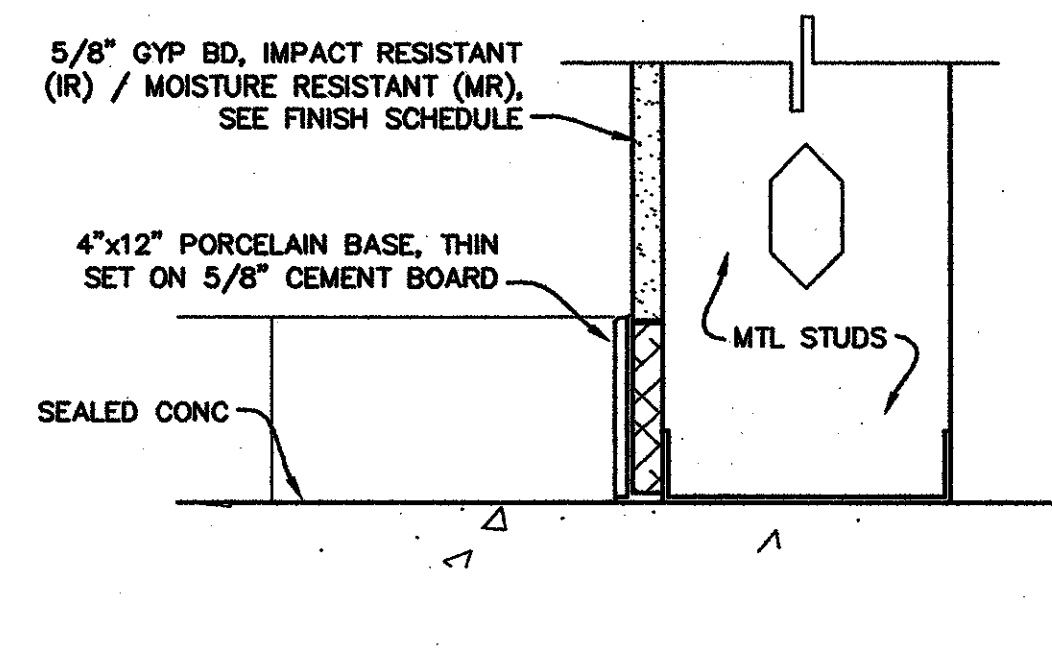
(TILE BASE & WALL @ TILE FLOOR)



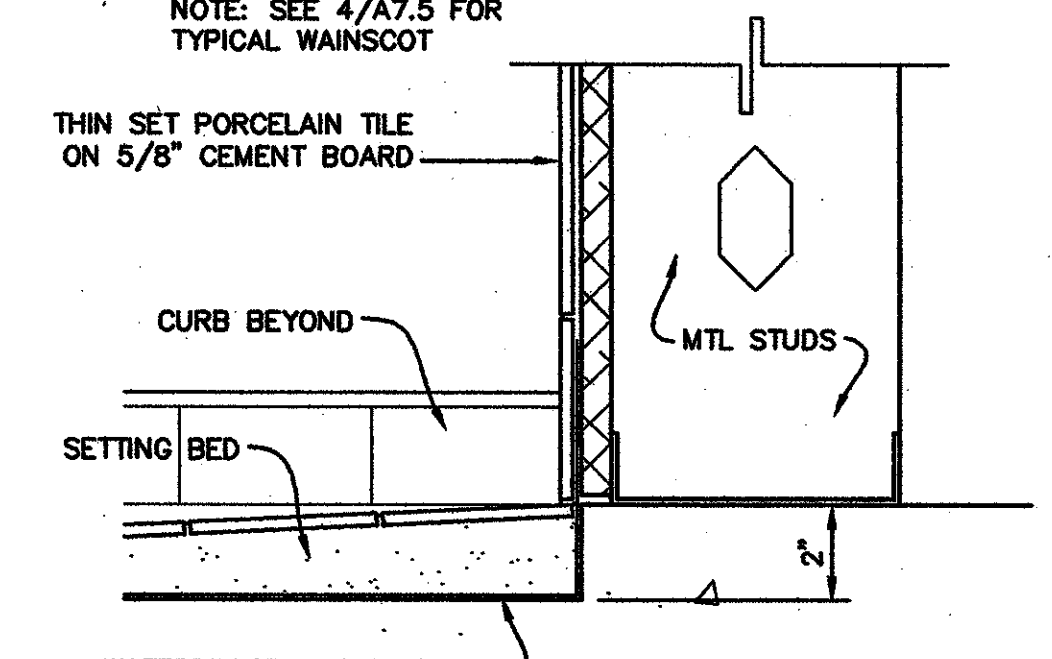
(TILE BASE @ TILE FLOOR)



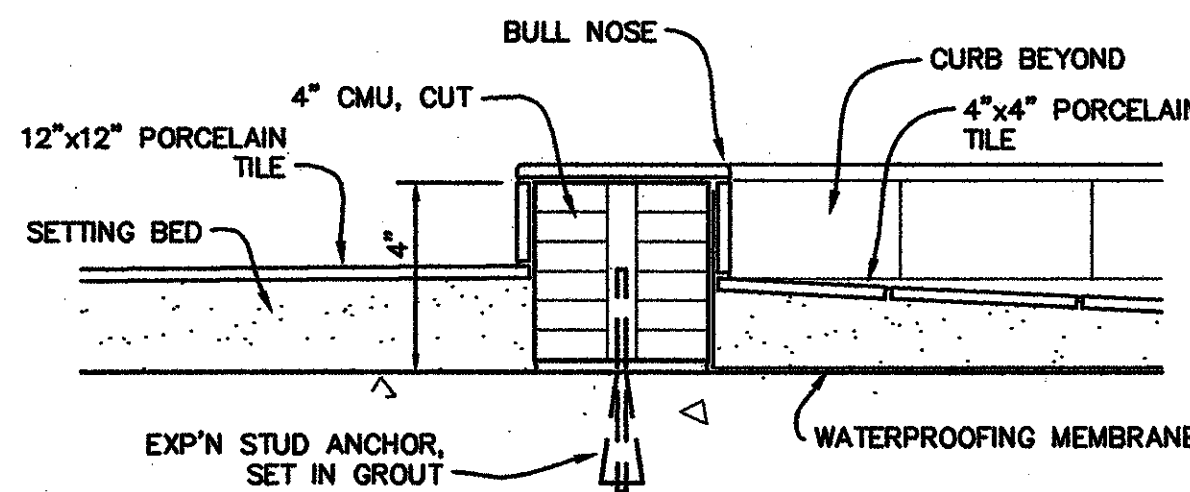
(A) (TILE BUTTS CONC FLOOR)



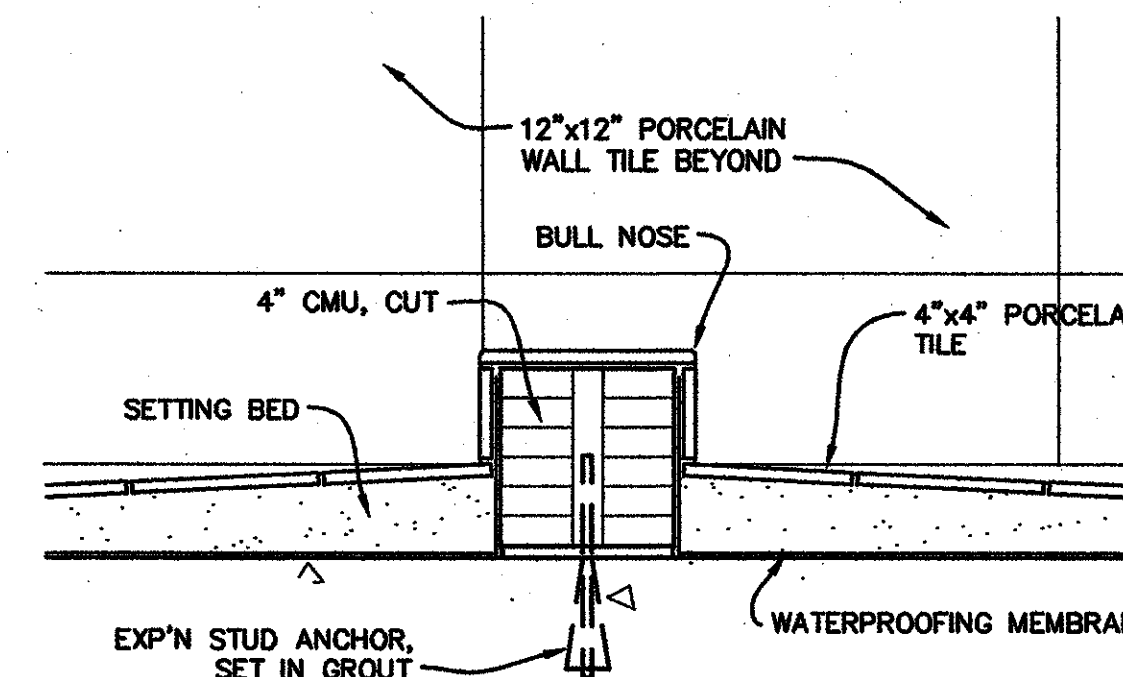
(B) (TILE BASE @ CONC FLOOR)



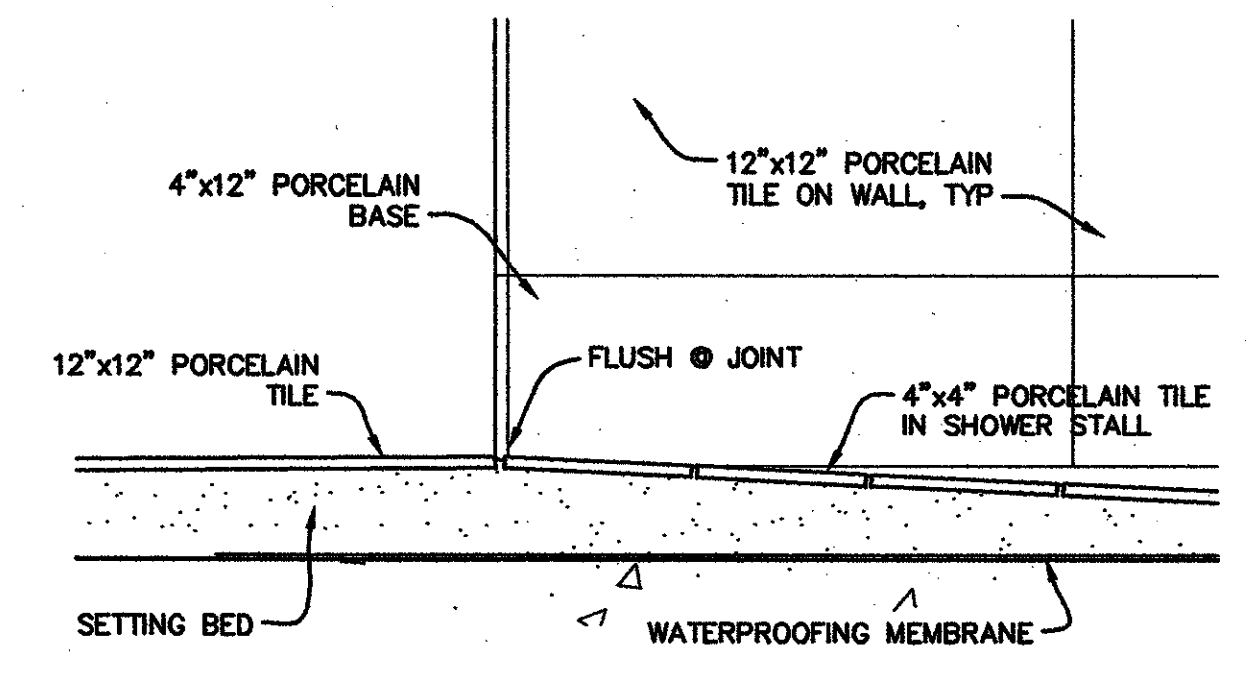
(C) (TILE BASE & WALL @ SHOWER)



(D) (TILE CURB @ SHOWER)

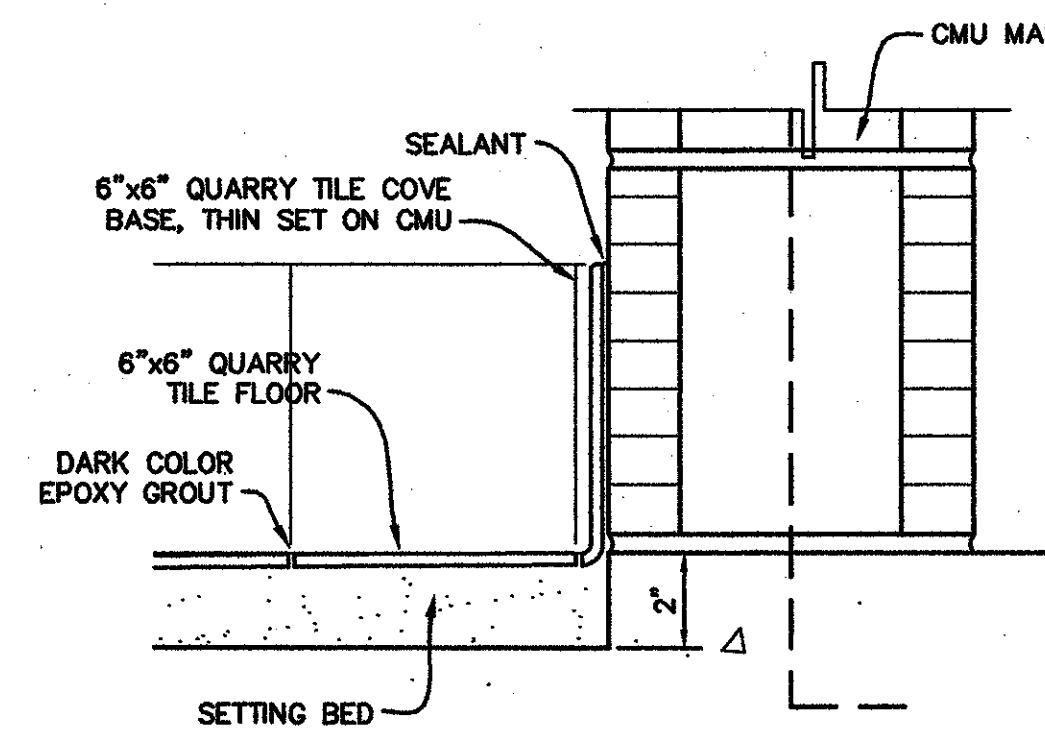


(E) (TILE CURB @ SHOWER)

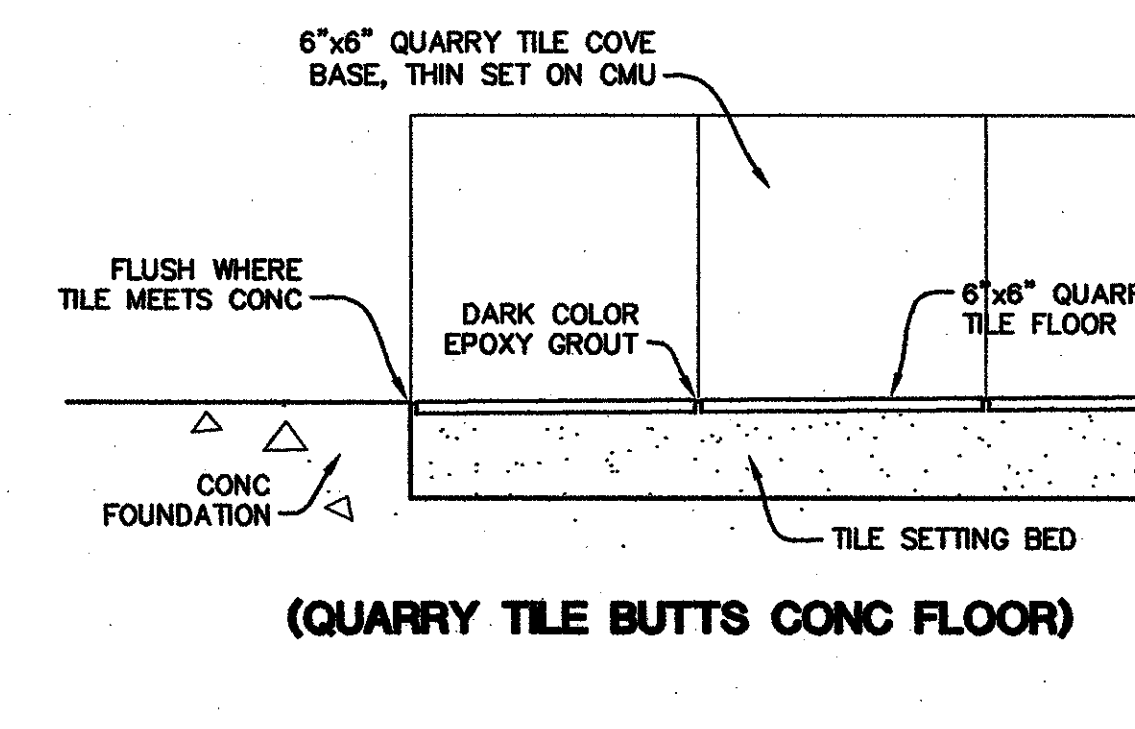


(F) (NO CURB @ HANDICAP SHOWER)

3 PORCELAIN TILE @ AREA 'A' SHOWERS
A7.5 | A7.5 3" x 1'-0"



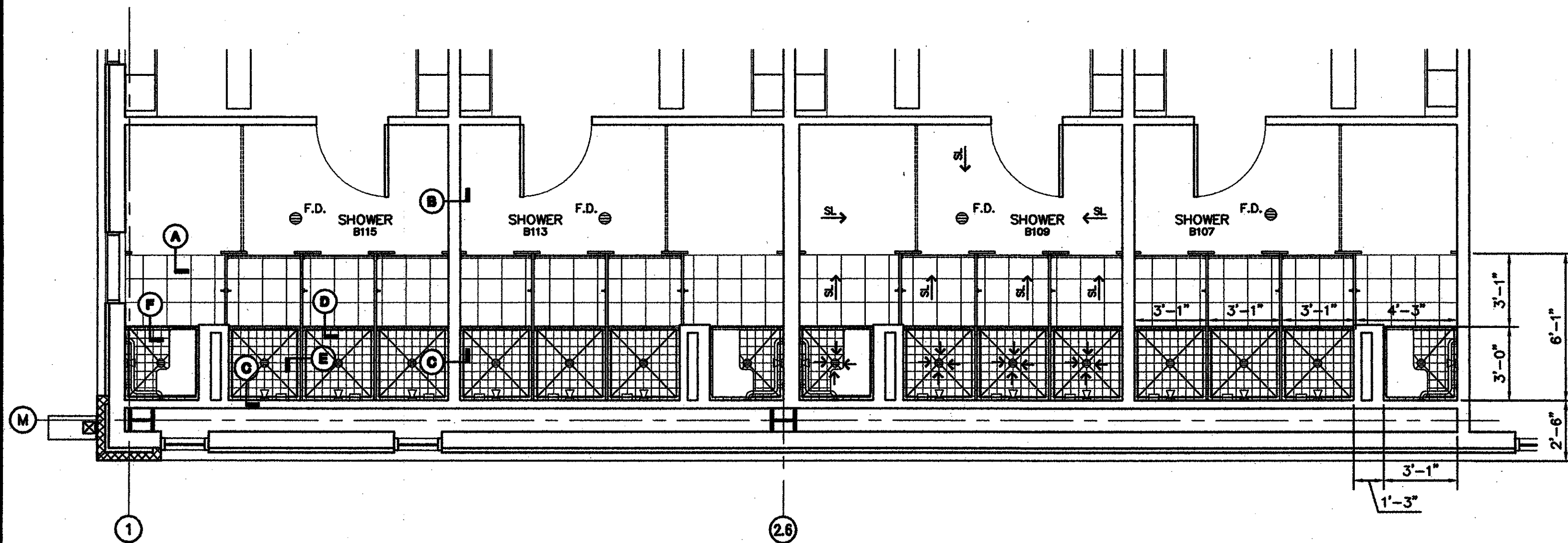
(QUARRY TILE FLOOR & BASE)



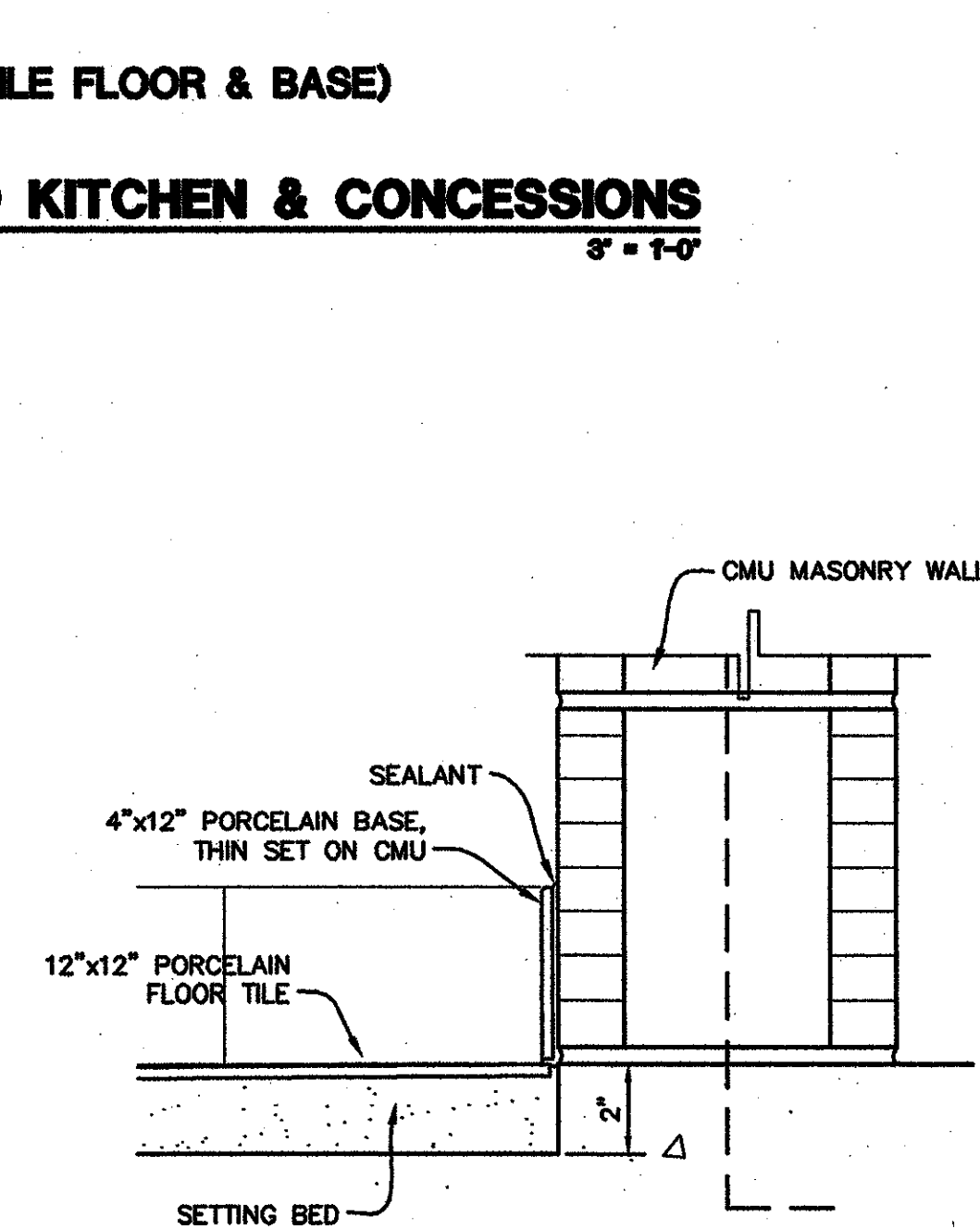
(QUARRY TILE BUTTS CONC FLOOR)

4 PORCELAIN TILE @ AREA 'A' & 'B' TOILETS
A7.5 | A7.5 3" x 1'-0"

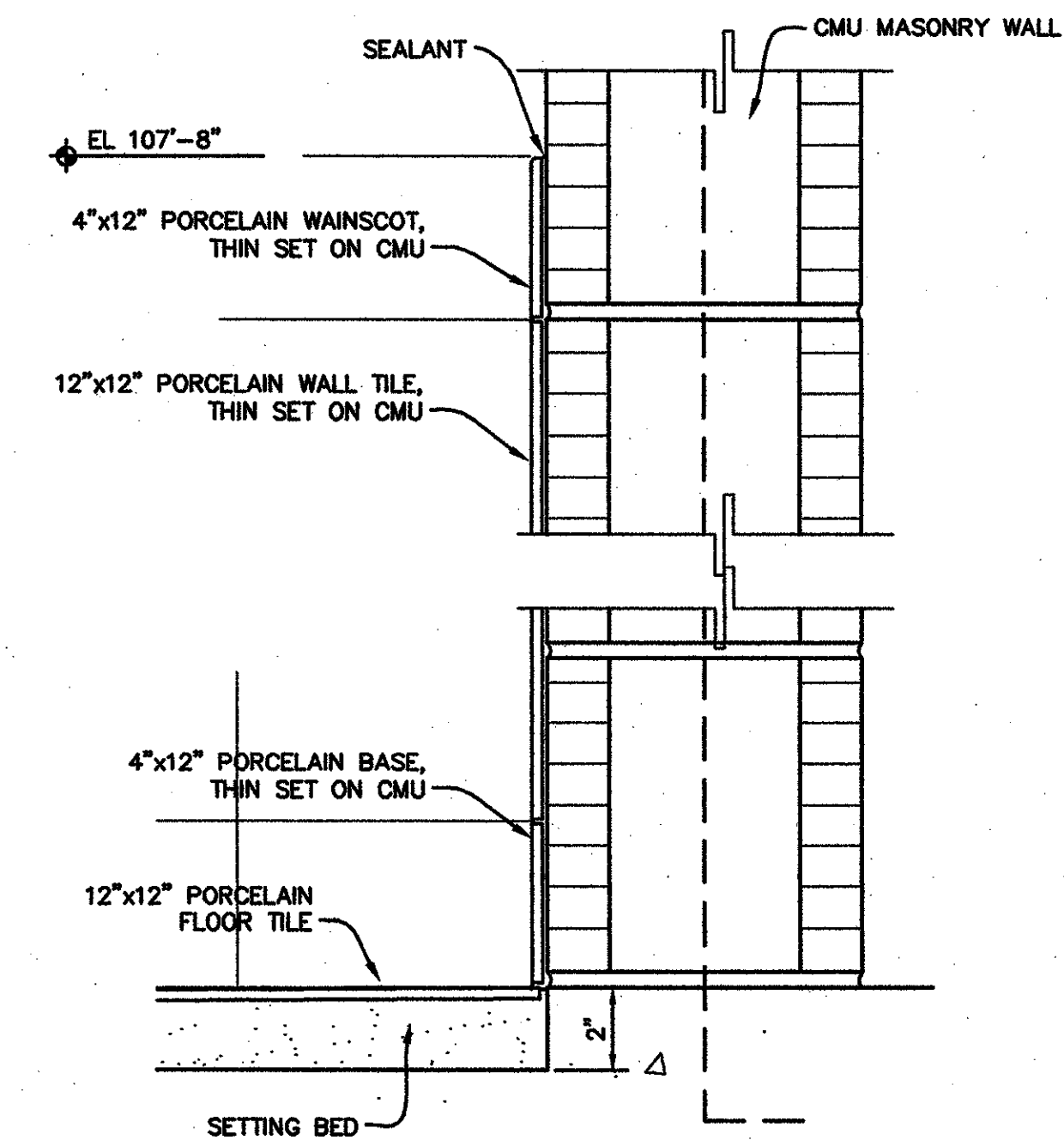
5 QUARRY TILE @ KITCHEN & CONCESSIONS
A7.5 | A7.5 3" x 1'-0"



1 ENLARGED PLAN @ SHOWER B107, B109, B113 & B115
A2.2 | A7.5 1 1/4" x 1'-0"



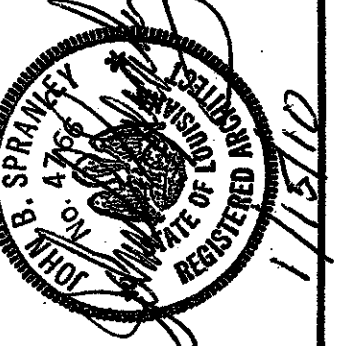
(TILE BASE @ TILE FLOOR)



(TILE BASE & WALL @ TILE FLOOR)

6 PORCELAIN TILE @ AREA 'C' & 'D' TOILETS
A7.5 | A7.5 3" x 1'-0"

project no. 20-0901
drawn LED
checked JJP
date 01.13.2010
revised



MEYER ENGINEERS, LTD.
ENGINEER & ARCHITECT

ARCHITECTURAL DETAILS
VAL RISS PARK
MULTI-PURPOSE BUILDING
ST. BERNARD PARISH, OWNER

sheet no.
A7.5
of ___ sheets