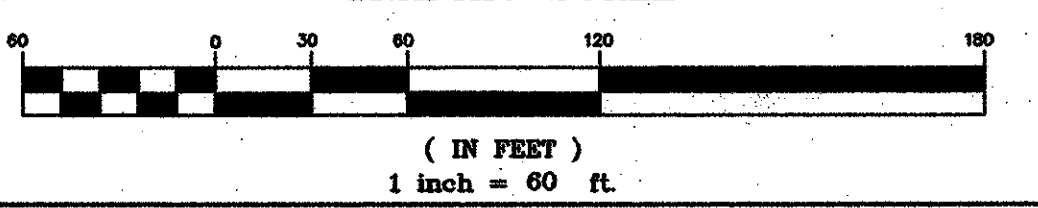
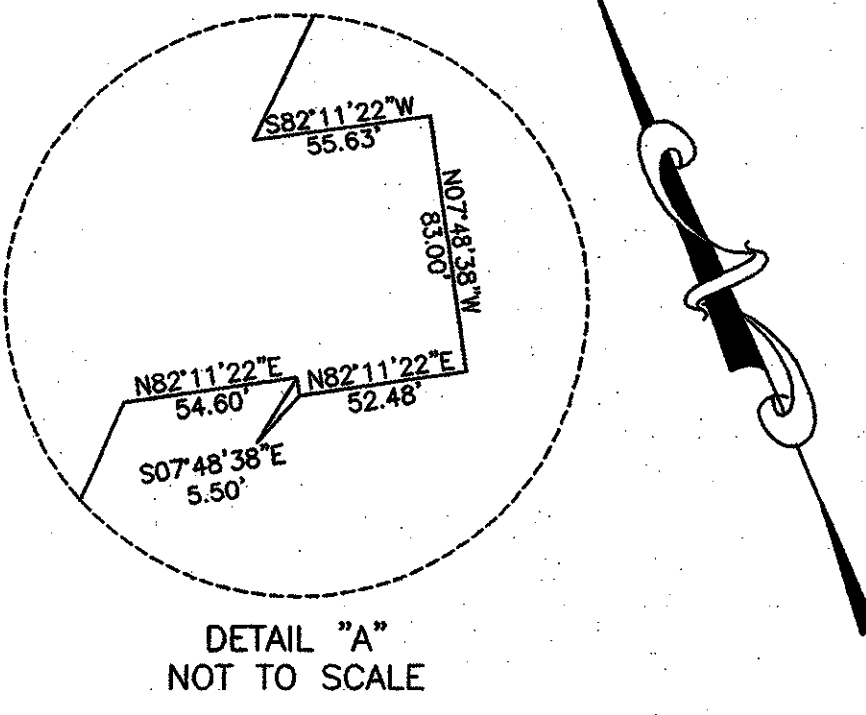


1,576,703.61 SQ. FT.
36.20 ACRES

GENERAL NOTES
 THE LOCATIONS OF UNDERGROUND AND OTHER NONVISIBLE UTILITIES SHOWN HEREON HAVE BEEN DETERMINED FROM DATA EITHER FURNISHED BY THE AGENCIES CONTROLLING SUCH DATA AND/OR EXTRACTED FROM RECORDS MADE AVAILABLE TO US BY THE AGENCIES CONTROLLING SUCH RECORDS. WHERE FOUND, THE SURFACE FEATURES OF LOCATIONS ARE SHOWN. THE ACTUAL NONVISIBLE LOCATIONS MAY VARY FROM THOSE SHOWN HEREON. EACH AGENCY SHOULD BE CONTACTED RELATIVE TO THE PRECISE LOCATION OF ITS UNDERGROUND INSTALLATION PRIOR TO ANY RELIANCE UPON THE ACCURACY OF SUCH LOCATIONS SHOWN HEREON, INCLUDING PRIOR TO EXCAVATION AND DIGGING.

ALL ELEVATIONS SHOWN REFER TO C.D.
 C.D. = CARO DATUM, N.A.V.D. = NORTH AMERICAN VERTICAL DATUM
 0.00' N.A.V.D. = 20.43' CARO DATUM

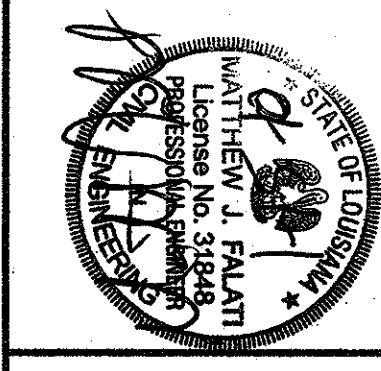
REFERENCE B.M. = L 278
 ELEVATION = 6.9' N.A.V.D. 88 OR 27.33' C.D.



SURVEY REFERENCE:
 SURVEY OF RIDGEFIELD PARK, SECTION 5, TOWNSHIP 13 SOUTH, RANGE 12 EAST BY J.J. KREBS & SON AND DATED JUNE 1, 1972.
 SURVEY OF LOT 105, EXTENSION OF VOLPE DRIVE SECTION 2, RIVERLAND PARK ADDITION, BY EUGENE I. ESTOPINAL & ASSOCIATES AND DATED SEPTEMBER 20, 1973.
 RESUBDIVISION SURVEY OF SQUARES 250, 251, 555, 557, 558, 560 & 561 OF LA FLETTE MANORS EXTENSION NO. 3 BY HILLARY, INC. AND DATED MARCH 15, 1975.
 SURVEY OF SQUARES 228, 248, 249, 250, 556 & 562 OF VERSAILLES, BY EUGENE I. ESTOPINAL & ASSOCIATES AND DATED AUGUST 24, 1977.

BAM
 CORPORATION, L.L.C.
 Professional Land Surveyors
 534 WILLIAMS BOULEVARD
 E-mail: bamcorp@bamcorporation.com
 (504) 468-8900
 Fax No. (504) 467-0065
 CITY OF KENNER
 JEFFERSON PARISH, LOUISIANA, 70062

project no.	20-0801
drawn	EMC
checked	MUF
date	01.15.2010
revised	



MEYER ENGINEERS, LTD.
 ENGINEER & ARCHITECT

SURVEY
 VAL RIESS PARK
 MULTI-PURPOSE BUILDING
 ST. BERNARD PARISH, OWNER

sheet no.
010
 of 1 sheets