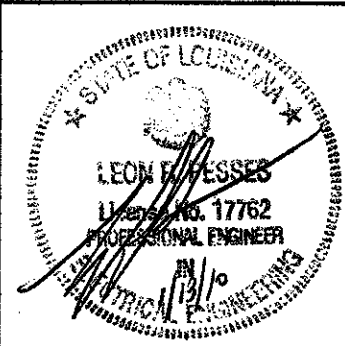


project no. 20-0901  
 drawn GVT  
 checked LRP  
 date 01.15.2010  
 revised 00.00.0000  
 00.00.0000



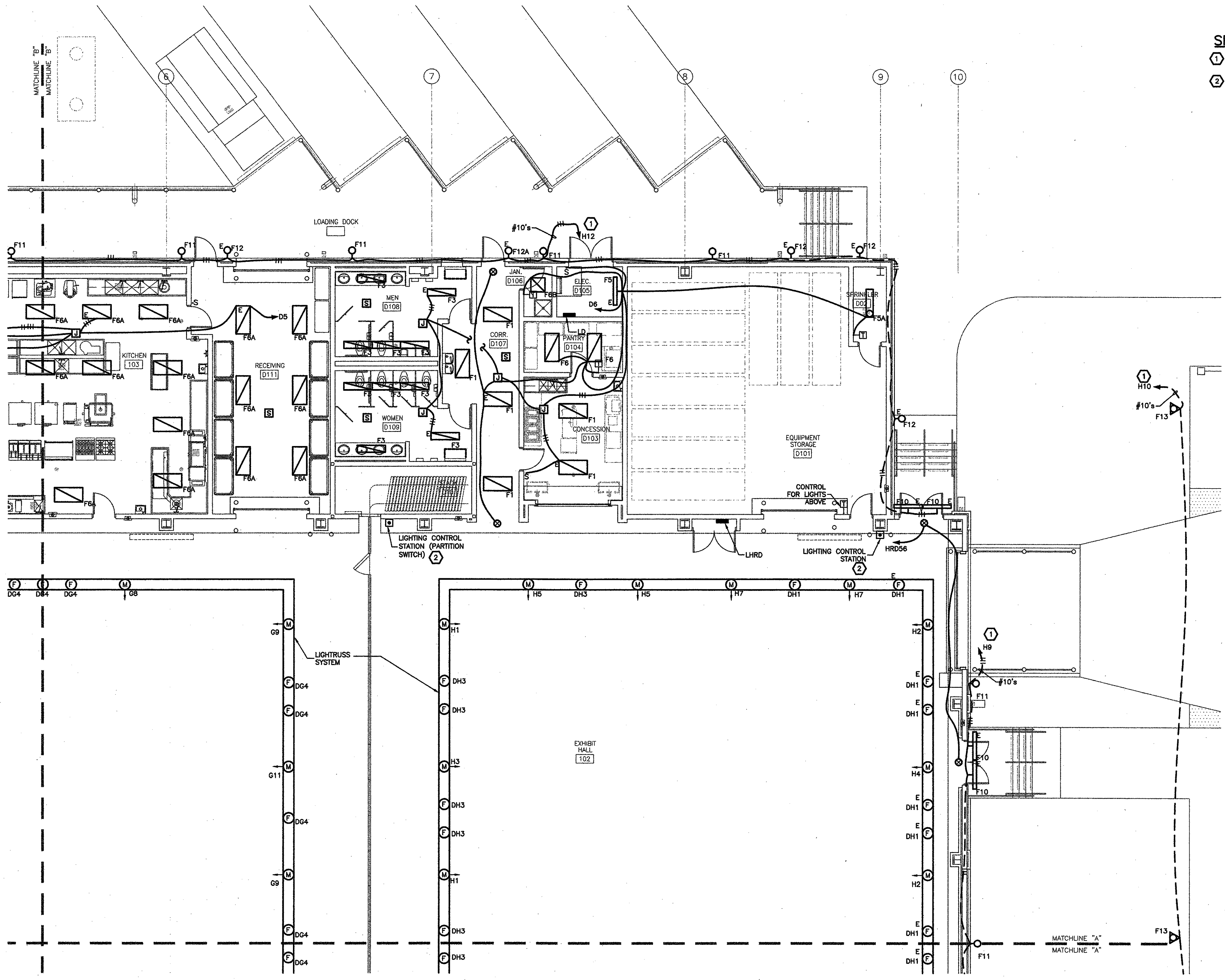
**MEYER ENGINEERS, LTD.**  
**ENGINEER & ARCHITECT**

**AREA D' FLOOR PLAN - LIGHTING**  
**VAL RISS PARK**  
**MULTI-PURPOSE BUILDING**  
**ST. BERNARD PARISH, OWNER**

sheet no.  
**E14**  
 of \_\_\_ sheets

**SPECIFIC NOTES:**

- ROUTE CIRCUIT THROUGH LIGHTING CONTROL PANEL, LCPH, LOCATED ON MEZZANINE LEVEL, ADJACENT TO PANEL LH.
- LIGHTING CONTROL STATION. PROVIDE 1" CONDUIT WITH MANUFACTURER SUGGESTED CABLE TO NEAREST LIGHTING CONTROL PANEL LOCATED ON MEZZANINE LEVEL.



**NOTES**

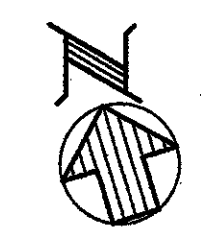
- OUTDOOR LIGHTING SHALL BE SWITCHED BY PHOTOCELL CONTROLLED RELAY IN LIGHTING CONTROL PANEL.
- RACEWAYS IN EXHIBIT HALL SHALL BE CONCEALED EITHER UNDER SLAB OR ABOVE TRUSSES.

**AUTOMATIC LIGHTING SHUTOFF SYSTEM NOTES**

- PROVIDE POWER SUPPLIES AND RELAY PACKS AS REQUIRED FOR AUTOMATIC LIGHTING SHUT-OFF DEVICES.
- PROVIDE A WALL-MOUNTED AUTO/OFF SWITCH AT EACH ENTRANCE/EXIT OF EACH AREA OR ROOM WHERE CORNER MOUNTED OR CEILING MOUNTED AUTOMATIC LIGHTING SHUT-OFF DEVICES ARE INDICATED.
- UNLESS INDICATED OTHERWISE, IN EACH ROOM/CORRIDOR WHERE AN AUTOMATIC LIGHTING SHUT-OFF DEVICE IS INDICATED, PROVIDE WIRING IN RACEWAY AS REQUIRED TO INTERCONNECT AUTOMATIC LIGHTING SHUT-OFF DEVICE(S), AUTO/OFF SWITCH, POWER SUPPLIES, RELAY PACKS, AND LIGHTING FIXTURES FOR CONTROL OF ALL THE LIGHTING FIXTURES IN THE ROOM/CORRIDOR, UNLESS NOTED OTHERWISE USING SUBSCRIPTS.

**LIGHTING**  
**PARTIAL BUILDING PLAN**

SCALE : 1/8" = 1'-0"



OWN PROJECT No 2910  
 CAD FILE E\_LTG  
 LAST REVISION 01-11-10  
 PLOT DATE 01-11-10  
 PLOT SCALE 1=1

**GVA ENGINEERING, L.L.C.**  
 PROJECT No. 2910

T:\CADPROJ\2900\2910\E\_LTG.dwg, 1/12/2010 5:46:40 PM, gvt