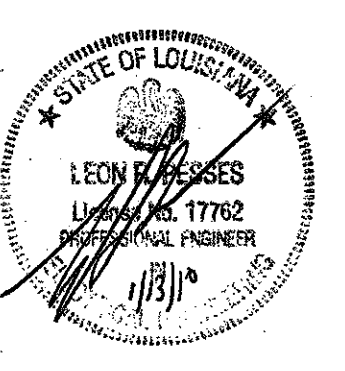


project no. 20-0901
 drawn GVT
 checked LRP
 date 01.15.2010
 revised 00.00.0000

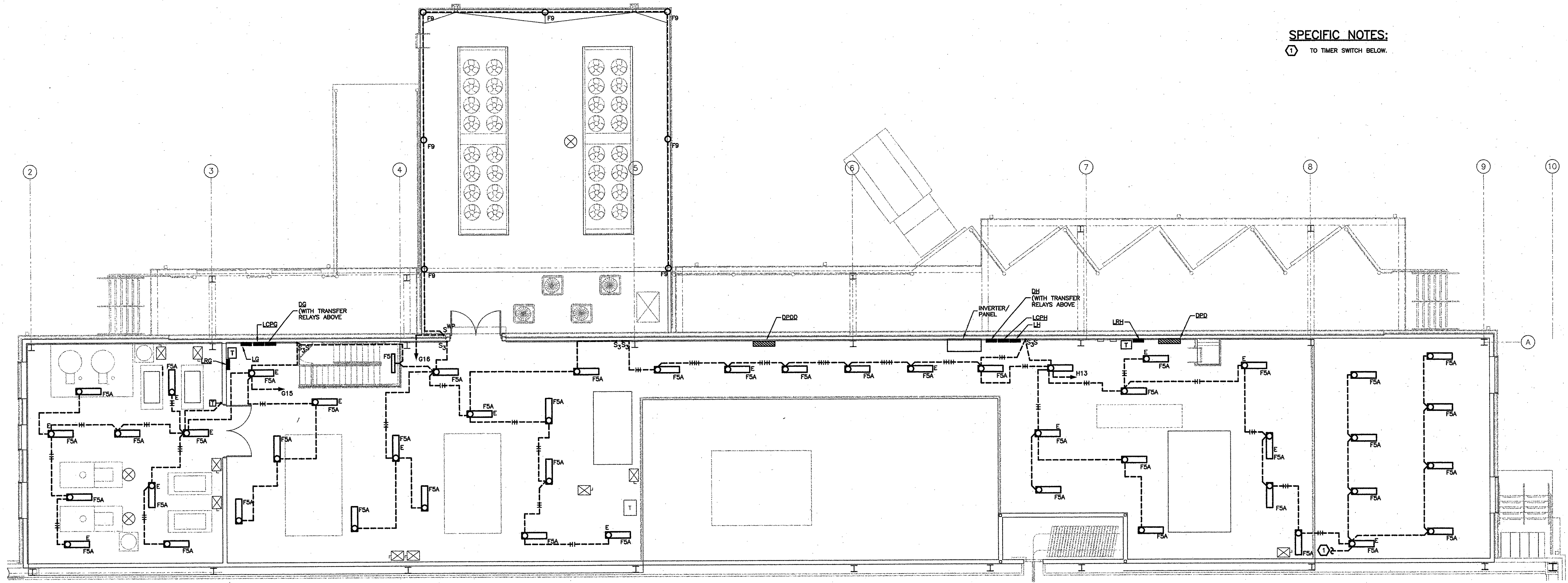


MEYER ENGINEERS, LTD.
ENGINEER & ARCHITECT

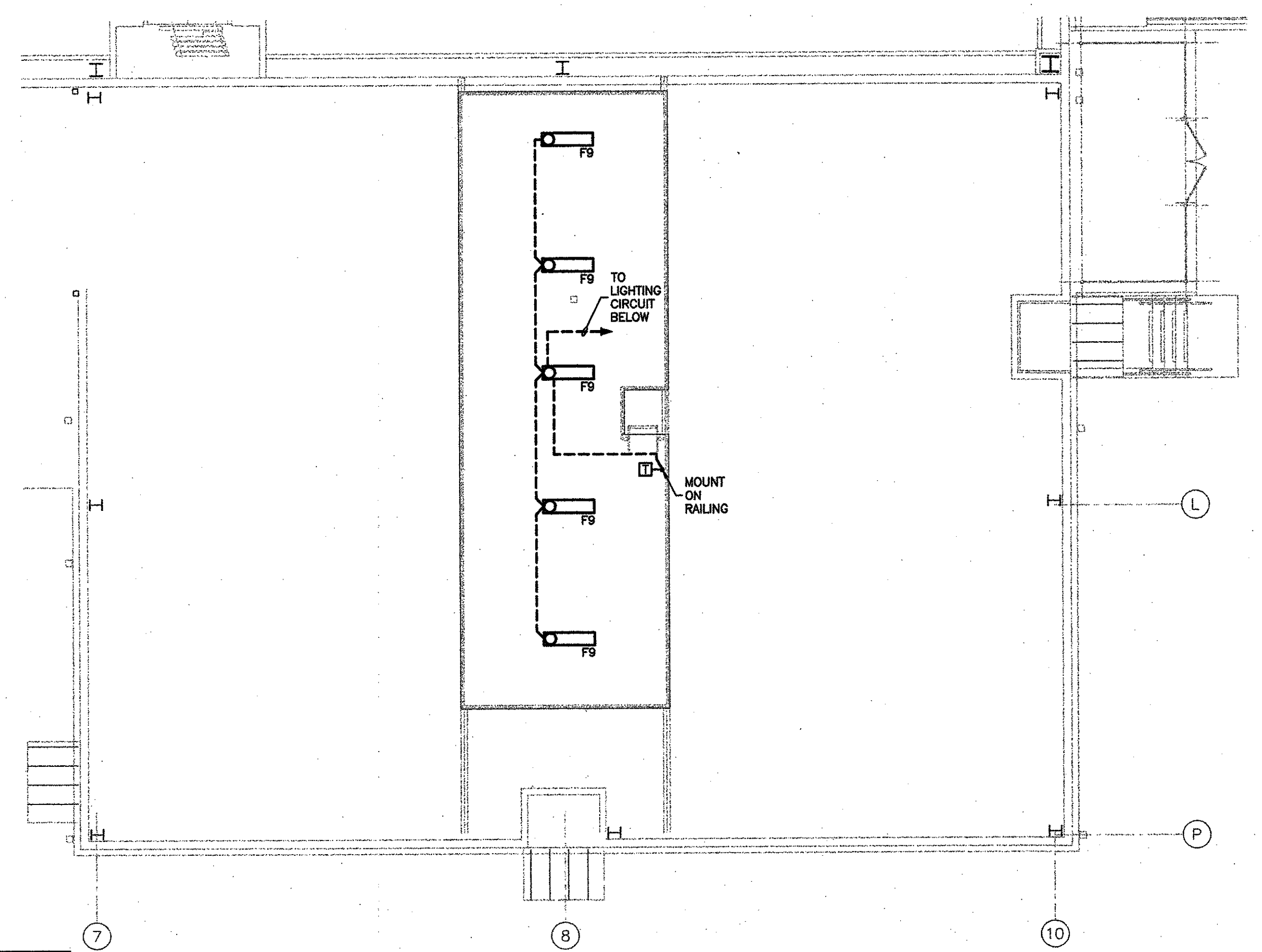
MEZZANINE PLAN - LIGHTING
VAL RIESS PARK
MULTI-PURPOSE BUILDING
ST. BERNARD PARISH, OWNER

sheet no. **E1.5**
 of ___ sheets

SPECIFIC NOTES:
 ① TO TIMER SWITCH BELOW.



LIGHTING
PARTIAL MEZZANINE PLAN
 SCALE : 1/8" = 1'-0"



LIGHTING
PARTIAL MEZZANINE PLAN
 SCALE : 1/8" = 1'-0"

GVA PROJECT No. 2910
 CAD FILE E_LTC
 LAST REVISION 01-11-10
 PLOT DATE 01-11-10
 PLOT SCALE 1=1

GVA ENGINEERING, L.L.C.
 PROJECT No. 2910

T:\CADPROJ\2900\S\2910\E_LTC.dwg, 1/12/2010 1:44:17 PM, gvt