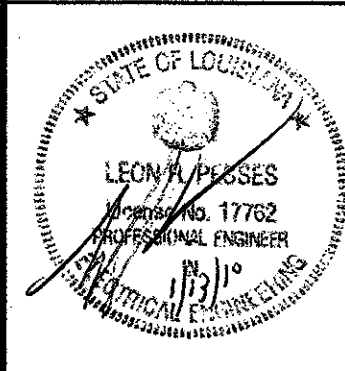


project no. 20-0901  
 drawn GVT  
 checked LRP  
 date 01.15.2010  
 revised 00.00.0000  
 00.00.0000



**MEYER ENGINEERS, LTD.**  
 ENGINEER & ARCHITECT

AREA 'B' FLOOR PLAN - POWER  
 VAL RISS PARK  
 MULTI-PURPOSE BUILDING  
 ST. BERNARD PARISH, OWNER

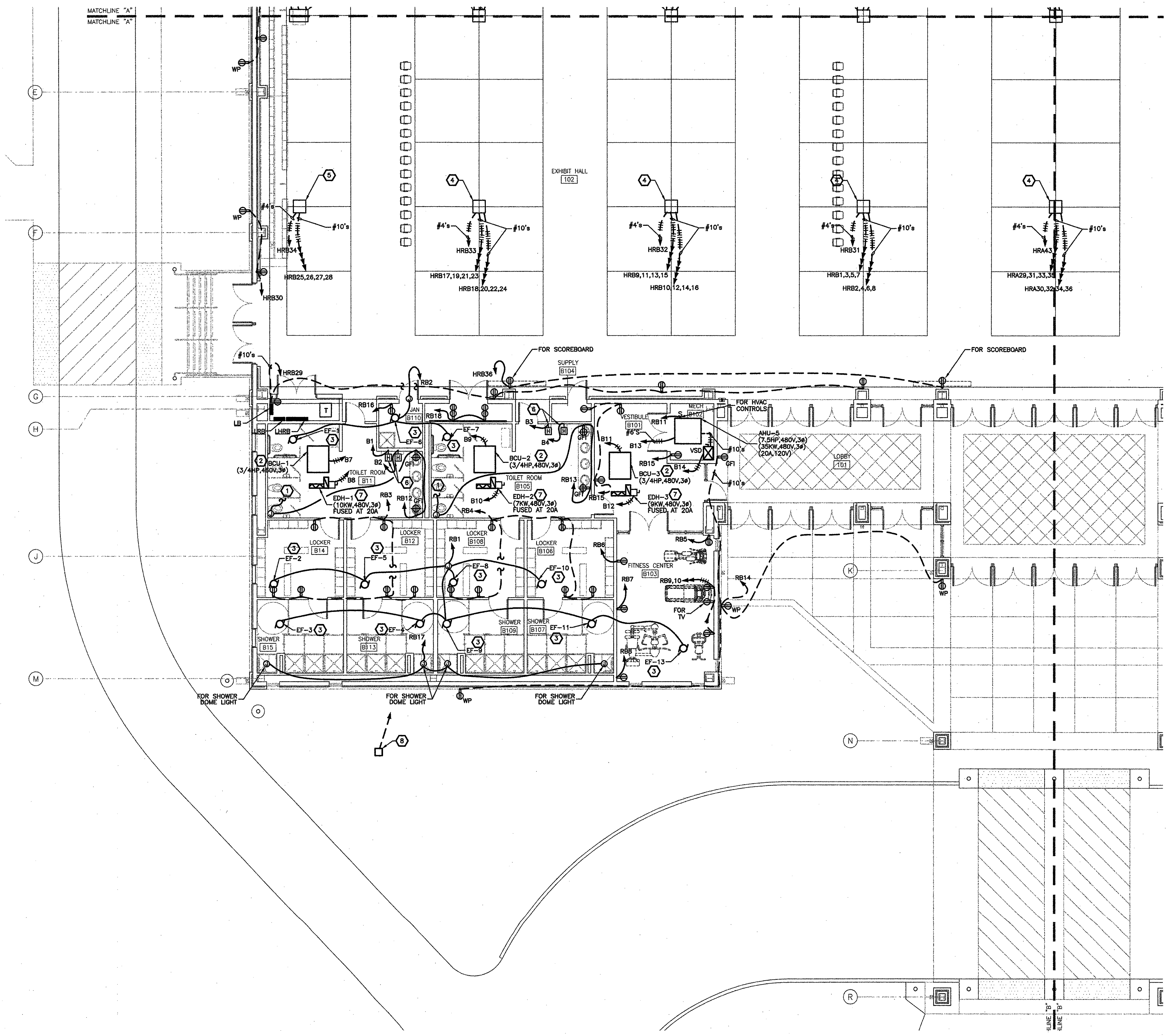
sheet no.  
**E2.2**  
 of \_\_\_ sheets

**SPECIFIC NOTES:**

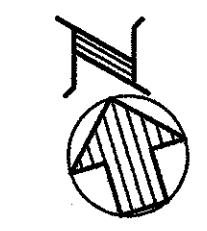
1. CONNECT TO 24V TRANSFORMER FOR FLUSH VALVE SOLENOIDS AND SENSORS FOR WATER CLOSETS AND URINALS.
2. MECHANICAL EQUIPMENT WITH INTEGRAL MOTOR CONTACTOR, OVERLOAD PROTECTION AND DISCONNECT. ROUTE 3#12, 1#12(G) IN 3/4" TO DESIGNATED PANEL.
3. EXHAUST FAN WITH FRACTIONAL HORSEPOWER MOTOR. PROVIDE NECESSARY RELAYS AND CONTACTORS TO CONTROL EXHAUST FAN WITH AUTOMATIC LIGHTING SHUTOFF DEVICE IN ROOM.
4. PROVIDE A LARGE CAPACITY FLOOR BOX TYPE 1. EACH RECEPTACLE SHALL BE ON ITS OWN DEDICATED CIRCUIT. SEE SPECIFICATIONS AND DETAILS FOR ADDITIONAL INFORMATION.
5. PROVIDE A LARGE CAPACITY FLOOR TYPE 2. EACH RECEPTACLE SHALL BE ON ITS OWN DEDICATED CIRCUIT. SEE SPECIFICATIONS AND DETAILS FOR ADDITIONAL INFORMATION. REFER TO ARCHITECTURAL DRAWINGS FOR EXACT LOCATION.
6. ELECTRICAL HAND DRYER. APPROX 2300W, 277V, 1Ø.
7. PROVIDE 30A, 3P, 480V SAFETY SWITCH FUSED AS INDICATED NEAR EQUIPMENT.
8. PROVIDE 12"W X 12"L X 10"D PRECAST HANDHOLE AND 2" EMPTY CONDUIT W/ PULLSTRING TO PANEL LRB.

**NOTES:**

1. REFER TO ARCHITECTURAL AND STRUCTURAL DRAWINGS FOR ADDITIONAL INFORMATION OF FLOOR BOX LOCATIONS AND INSTALLATION.



**POWER  
 PARTIAL FLOOR PLAN**  
 SCALE : 1/8" = 1'-0"



GVA PROJECT No. 2910  
 CAD FILE  
 E\_PWR  
 LAST REVISION  
 01-04-10  
 PLOT DATE  
 01-05-10  
 PLOT SCALE  
 1=1

**GVA ENGINEERING, L.L.C.**  
 PROJECT No. 2910

T:\CADPROJ\2900\2910\5\2910\5\_PWR.dwg, 1/12/2010 2:30:31 PM, gvt