

T:\CADPROJ\2900\5\2910\E_PWR.dwg, 1/12/2010 3:45:52 PM, REV

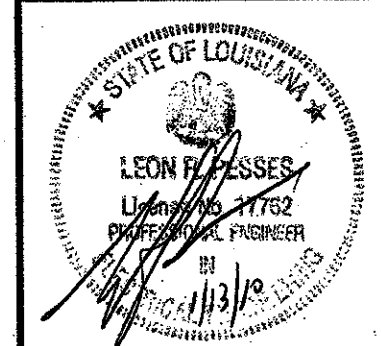
NOTES:

1 WIRING FOR MECHANICAL EQUIPMENT ON MEZZANINE IS SHOWN ON FIRST FLOOR PLAN.

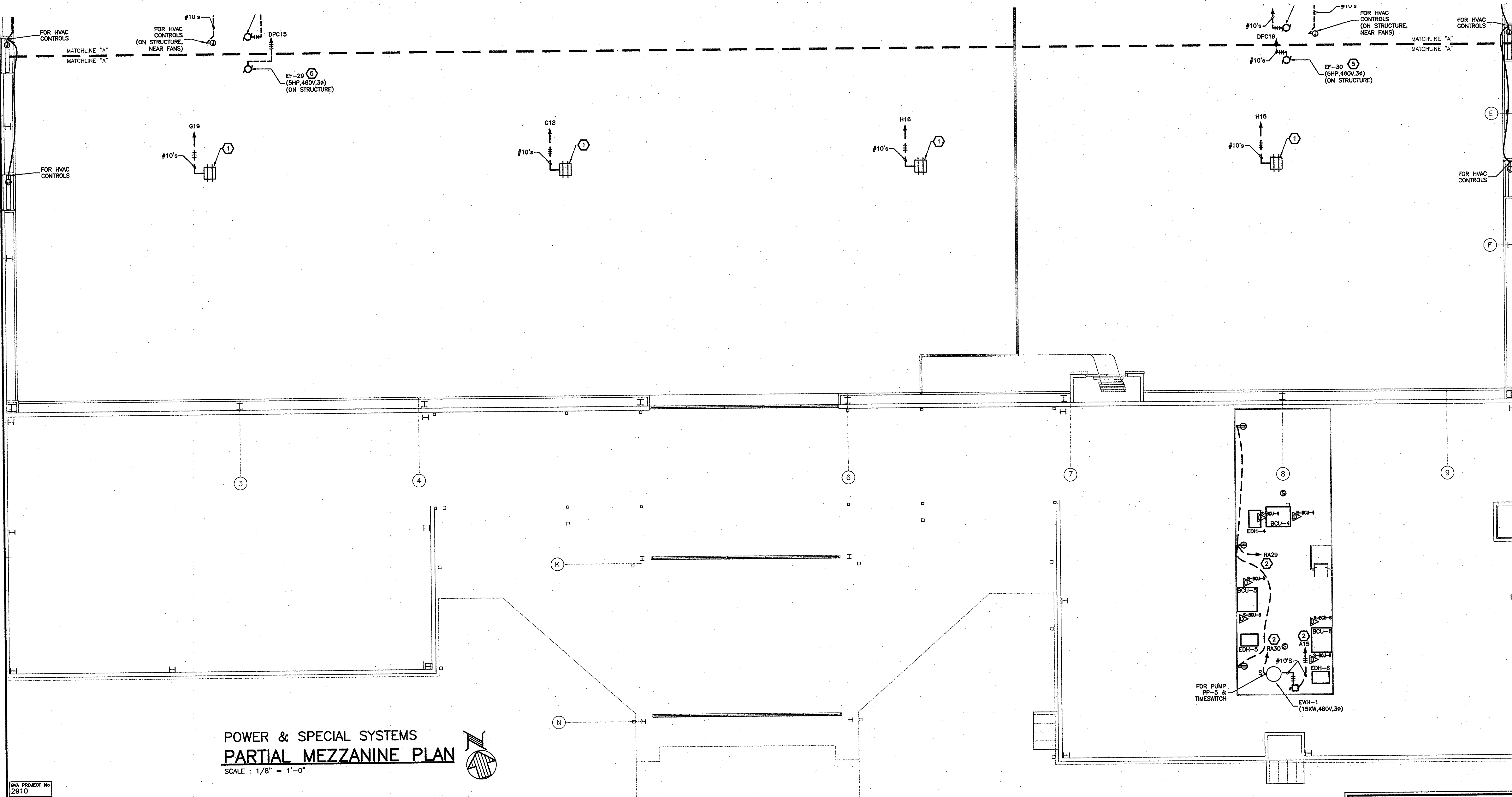
SPECIFIC NOTES:

- ① PROVIDE 30A, 480V, 5W FUSED MECHANICAL INTERLOCK PIN AND SLEEVE DEVICE EQUAL TO HUBBELL HBL530MIF7W. MOUNT UNIT TO SIDE OF TRUSS.
- ② PANEL LOCATED ON FLOOR LEVEL.

project no.	20-0801
drawn	GVT
checked	LRP
date	01.15.2010
revised	00.00.0000
	00.00.0000



MEYER ENGINEERS, LTD.
ENGINEER & ARCHITECT



POWER & SPECIAL SYSTEMS
PARTIAL MEZZANINE PLAN
SCALE : 1/8" = 1'-0"



GVA PROJECT No.	2910
CAD FILE	E_PWR
LAST REVISION	01-12-10
PLOT DATE	01-12-10
PLOT SCALE	1/8" = 1'-0"
	1/1

GVA ENGINEERING, L.L.C.
PROJECT No. 2910

PARTIAL MEZZANINE PLAN - POWER & SPECIAL SYSTEMS
VAL RIESS PARK
MULTI-PURPOSE BUILDING
ST. BERNARD PARISH, OWNER

sheet no. **E2.5**
of ___ sheets