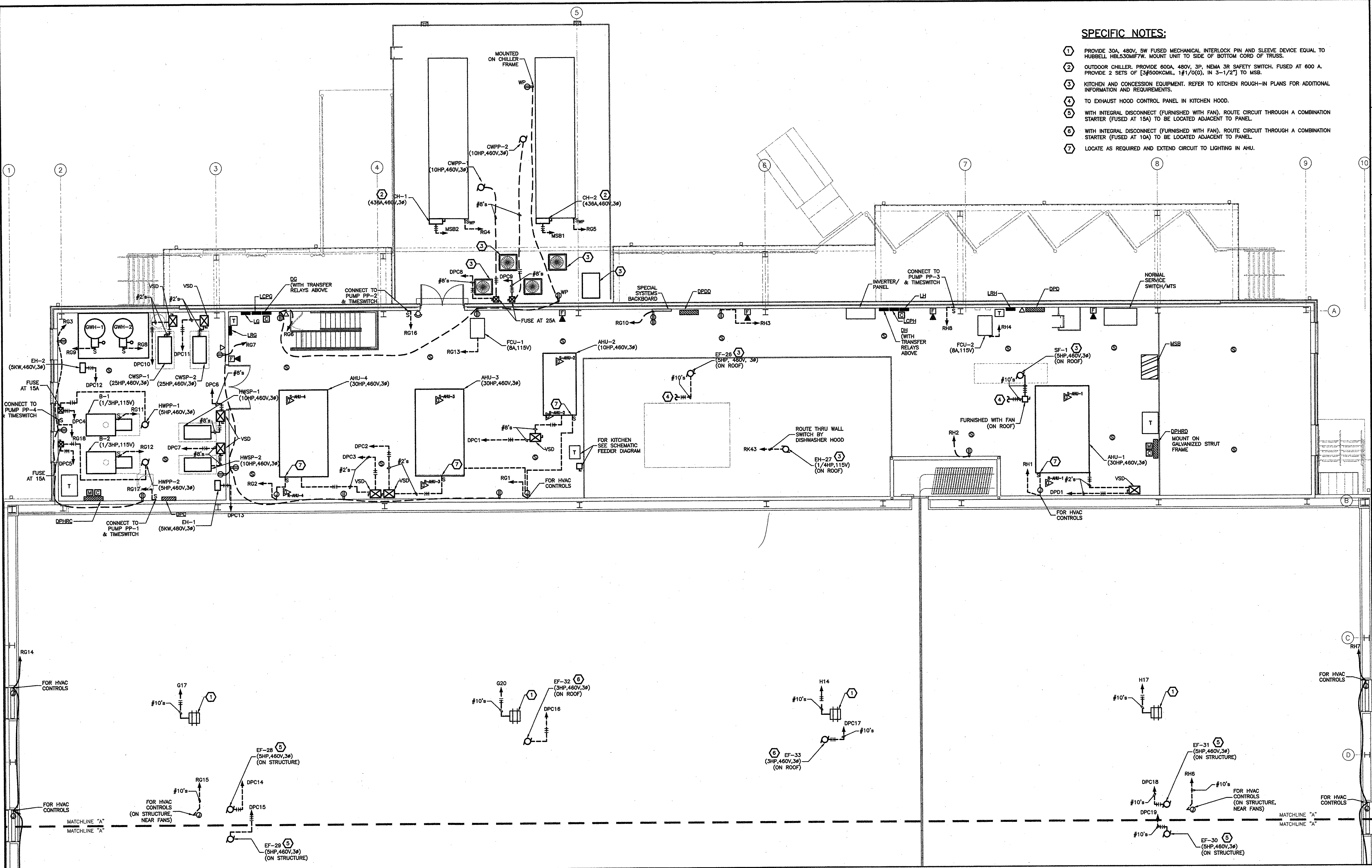
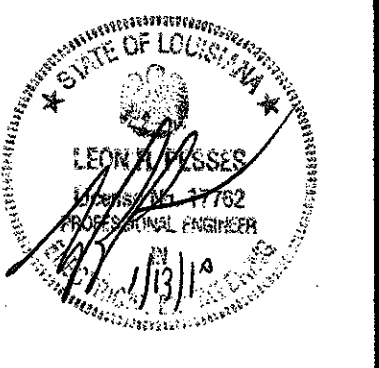


T:\CADPROJ\2900\S\2910\E_PWR.dwg, 1/12/2010 5:52:27 PM, REV



- SPECIFIC NOTES:**
- 1 PROVIDE 30A, 480V, 5W FUSED MECHANICAL INTERLOCK PIN AND SLEEVE DEVICE EQUAL TO HUBBELL HBL530MFTW. MOUNT UNIT TO SIDE OF BOTTOM CORD OF TRUSS.
 - 2 OUTDOOR CHILLER. PROVIDE 600A, 480V, 3P, NEMA 3R SAFETY SWITCH. FUSED AT 600 A. PROVIDE 2 SETS OF [3#500KCMIL, 1#1/0(O), IN 3-1/2"] TO MSB.
 - 3 KITCHEN AND CONCESSION EQUIPMENT. REFER TO KITCHEN ROUGH-IN PLANS FOR ADDITIONAL INFORMATION AND REQUIREMENTS.
 - 4 TO EXHAUST HOOD CONTROL PANEL IN KITCHEN HOOD.
 - 5 WITH INTEGRAL DISCONNECT (FURNISHED WITH FAN), ROUTE CIRCUIT THROUGH A COMBINATION STARTER (FUSED AT 15A) TO BE LOCATED ADJACENT TO PANEL.
 - 6 WITH INTEGRAL DISCONNECT (FURNISHED WITH FAN), ROUTE CIRCUIT THROUGH A COMBINATION STARTER (FUSED AT 10A) TO BE LOCATED ADJACENT TO PANEL.
 - 7 LOCATE AS REQUIRED AND EXTEND CIRCUIT TO LIGHTING IN AHU.

Project no.	20-0001
drawn	GVT
checked	LRP
date	01.15.2010
revised	00.00.0000
	00.00.0000



MEYER ENGINEERS, LTD.
ENGINEER & ARCHITECT

PARTIAL MEZZANINE PLAN - POWER & SPECIAL SYSTEMS
VAL RISS PARK
MULTI-PURPOSE BUILDING
ST. BERNARD PARISH, OWNER

POWER & SPECIAL SYSTEMS
PARTIAL MEZZANINE PLAN
SCALE: 1/8" = 1'-0"

- NOTES:**
1. EACH EH AND FCU HAS AN INTEGRAL DISCONNECT.

GVA PROJECT No	2910
CAD FILE	E_PWR
LAST REVISION	01-12-10
PLOT DATE	01-12-10
PLOT SCALE	1=1

GVA ENGINEERING, L.L.C.
PROJECT No. 2910

sheet no.
E2.6
of ___ sheets